

# City Briefs

## High School News and Comment



By MARY LOU CASE

**Society Deadline**  
The deadline for society copy must be in the hands of the society editor not later than 1 p. m. Thursday. The deadline has been advanced in order that the society section reach Lakeview readers.

### WEATHER

**KLAMATH FALLS AND VICINITY:** Cloudy with occasional rain this afternoon, becoming partly cloudy with occasional showers tonight and Thursday. Strong to gale force south winds, shifting to northwesterly and increasing tonight. High today and Thursday about 60. Low tonight 47.

**NORTHERN CALIFORNIA:** Cloudy in north and spreading cloudiness south today, with rain beginning in north and southern portions tonight and Thursday. Showers in north Thursday. Moderate to fresh south winds off coast, except fresh to strong near Point Reyes tonight.

**WESTERN OREGON:** Intermittent rain today and tonight. Cooler in extreme south today. High tonight 42 to 46. Scattered showers and little change in temperature. Thursday, strong to occasionally gale force southerly winds off coast.

**KATHLEEN OREGON:** Increasing cloudiness and slightly cooler today, with high temperatures from 60 to 70. Scattered showers tonight, and Thursday. Low 38 to 44. High Thursday 55 to 65.

**Twins Born** — Mr. and Mrs. Melvin Sawyer of Kenia are parents of twins, a girl and boy, born early Tuesday afternoon, April 26, at Klamath Valley hospital. The girl arrived at 1:07 p. m., weighing 5 pounds 6 ounces, and the boy at 1:23 p. m., weight, 5 pounds 3 1/2 ounces.

**Healthy Children** — A well-child clinic to promote health among children will be conducted Monday at the Klamath county health department, 1949 Main, from 1 to 3 p. m. Parents should phone 7714 before Monday for appointments for their children to be examined. There is no charge for this service.

**Sewing Meeting** — There will be a sewing meeting of Kathryn Beattie's Missionary society of Peace Memorial church Friday at 10:30 a. m. at the home of Mrs. Alice King, 1756 Gary. Potluck luncheon will be served at noon.

**NAACP** — The NAACP is conducting a membership campaign now in progress. Mrs. Ben Peters is chairman of the campaign and may be contacted at 432 Broad or by phoning 8109.

**Plant Sale** — The Klamath Falls Garden club is sponsoring an all-day plant sale Friday in the Baisiger Motor company building. Hours are from 9 a. m. to 5 p. m. and the public is invited.

**Auxiliary** — St. Paul's Women's auxiliary will meet Thursday at 2 p. m. in the parish house for a regular meeting. The program is under the direction of Mrs. Raymond Reeves.

**Aid Meeting** — Zion Lutheran Ladies Aid will meet Thursday at 2 p. m. at the church, 1026 High. Hostesses will be Mrs. E. Blind and Mrs. Lora Brazee.

**Drill Team** — The drill team of Prosperity Rebekah lodge will meet in the IOOF hall Monday, April 26, at 7:30 p. m. for practice, and all members are urged to be present.

**Pythian Sisters** — There will be a regular meeting of Pythian Sisters in the IOOF hall Friday, April 23, at 8 p. m. and all members are urged to attend.

**Wednesday** — The Wednesday club will meet at 8 p. m. tonight in the parish house of St. Paul's Episcopal church. All members are urged to attend.

**Postponed** — Roy T. Primo, cubmaster for Mills cub pack No. 4, Wednesday announced postponement of the pack meeting scheduled for Friday night. The meeting will be held one week later, Friday, April 30, 7:30 p. m. in the girls' basement of Mills school. A film of special interest to cubs and parents will be shown.

**Mystery Play** — "Ghost to Ghost" is the interesting name of the play which will be presented by Klamath Community Players over KPJI Thursday night at 8:40 o'clock. Dorothy Judd, Mary Jo Hallet, Douglas Gaines and Allen Abner will play the roles. The play is directed by Rev. Godfrey Matthews.

**Brakes Arm** — Six-year-old Kathleen Rutledge, daughter of Mr. and Mrs. G. E. Rutledge, 4700 Denver, is in Hillside hospital receiving treatment for a broken right arm. Kathleen fell from a teeter-totter at the family home Monday and broke her arm at the elbow.

**Insurance Meeting** — Klamath and Lake county insurance agents will meet at the Winema Thursday noon. Problems of interest to agents will be discussed and John Sandmeyer will preside at the luncheon.

**Thimble Club** — The Thimble club of Neighbors of Woodcraft will meet at the home of Stella Dryden, 610 N. 11th, Wednesday (today) at 8 p. m. and what and pinocle will be played. All members and friends are invited.

**Rummage** — Sacred Heart academy is sponsoring a rummage sale to be held in Baisiger Motor company's showroom all day Friday and Saturday morning.

**Initiation** — Canton crater No. 7 will meet Thursday at 8 p. m. in IOOF hall. There will be initiation followed by refreshments.

**Surgery** — Angel Gasparini, 2262 Reclamation, is recovering from major surgery performed Wednesday at Hillside hospital.

**Cards** — Women of the Moose Homemakers division will hold a card party Friday at 2 p. m. in the hall.

**Does YOUR Life Insurance Program protect YOUR SOCIAL SECURITY ESTATE?**

**PAUL A. LEE**  
Phone 7777 731 Main St.  
SUN LIFE OF CANADA

From 9 to 12 tonight, Baldy's band will play for the Elks' dance, given by the Elks for high-schoolers throughout the county. The dance is couples only, and dressy sports attire is the proper dress. KU students working on the committee for the dance were Bill Southwell, Glenn Lorenz, Bob Petzold, Jim Owens and Roddie Davis.

For the clean-up, the city campaign started by the Art and Latin clubs, a clean-up week and month have been designated. Clean-up month will be April 19 to May 19; and clean-up week, April 26 to May 1. Plans for this campaign are quite extensive and include a parade April 30 in which all the clubs in school will be asked to participate.

Students working on the main committee are LeRoy Overen, chairman; Evelyn Rowland, co-chairman; Ponda Parsons, Bob Hooker, Ken Torgerson, Bob Hilton, Helen Jackson, Marcella Murray, Barton Adams, Donna McVey, John Epley, Carol Burritt, Delora Hedlund and Peggy Dahlman.

Preparing the material for the senior play costumes has been started by the costumers. Katherine Wilson is in charge; helping her have been Sally Humble, Edith Wissenbach, Nadine Yockey and Stuart Oliver. These students dyed

material all day Tuesday, using blues, purples and reds, that will make the bright costumes for the play, "Comedy of Errors."

Thursday's educational broadcast at 1:15 over KPLW will be given again by the Spanish club. The program will be a teletext feature in Spanish and with Spanish songs. Working on the script are Joe Demetras, June Hensley and Nadine Yockey.

No Pelicana tonight; last Wednesday's program was the last for the year. The RASIP department is now devoting all its efforts for the spring show, May 5.

Grange — Shasta View grange will hold a regular meeting Thursday at 8 p. m. in the Shasta school. Members with small children are especially urged to attend as a baby sitter is in attendance.

Practice — The rhythm band of Women of the Moose will practice between 4 and 5 p. m. Friday in the hall.

**CARD OF THANKS**  
We wish to extend our heartfelt thanks and appreciation for the acts of kindness, the messages of sympathy and the many beautiful floral offerings during our recent bereavement, the loss of our wife and mother.

Pete Chavez  
Joe and Mabel.

**Wilson Bail Ordered Forfeited**  
Fifty dollars bail money put up by Edith Wilson, 43, for release from the county jail on a charge of assault and battery has been ordered forfeited by Justice of the Peace J. A. Mahoney.

Mrs. Wilson was accused of knifing Mack Shear, 57, April 15. She was arrested the next day.

**Hot Ashes Said Cause Of Fire**  
Hot ashes were again chalked up as the cause of a fire which caused some damage to a garage at 128 Lincoln, city firemen said Wednesday. The alarm came in shortly before noon Tuesday. Owner of the property is Winters Lane. A call at 8:15 a. m. Wednesday

came from 2305 S. 6th, property owned by Dominic Frazer, but there was little damage. A flue fire and a fallen stovepipe brought about the call.

During 1810, the American army was equipped with "top hat and tails."

Harvard college was opened in 1638. There are approximately 2100 miles of canals in the United States.

SO FAST...PURE...DEPENDABLE  
**St. Joseph ASPIRIN**  
WORLD'S LARGEST SELLER AT 10¢

Metropolitan Moments . . . . . by LINDA

**ARROW SHIRTS**  
NEW SPRING SHIPMENTS  
Nationally Famous  
**NUNN - BUSH SHOES**

Popular wing - tips, moccasin style, and the new crepe sole models. Sizes 8-13 and widths A-E.

From 17.95  
Other Brands of Shoes From 58.85

Since 1918  
**Drew's MANSTORE**  
733 Main  
FASHION PARK

ACE SALVAGE Co.



"When he switched to Calvert Reserve he could spot a treasure!"

Searching for fathomless whiskey enjoyment? Switch to Calvert Reserve . . . the whiskey of outstanding quality. There's a mellow treasure of drinking pleasure in its agreeably light body and delightfully smooth

flavor. Wherever you look, you'll find more and more people are switching to . . .  
**Calvert Reserve**  
"THE CHOICEST YOU CAN DRINK OR SERVE"

Calvert Distillers Corp., N.Y.C. Blended Whiskey: 86.8 Proof—65% Grain Neutral Spirits

## FACE FACTS BY KEN TUCKY



**HAVE YOU A DIPLOMAT'S BROW?**  
SQUARE, HIGH-DOMED, INDICATES APPRECIATION OF WHAT IS RIGHT FOR THE OCCASION. THIS MAN NATURALLY SERVES "DOUBLE-RICH" CREAM OF KENTUCKY!

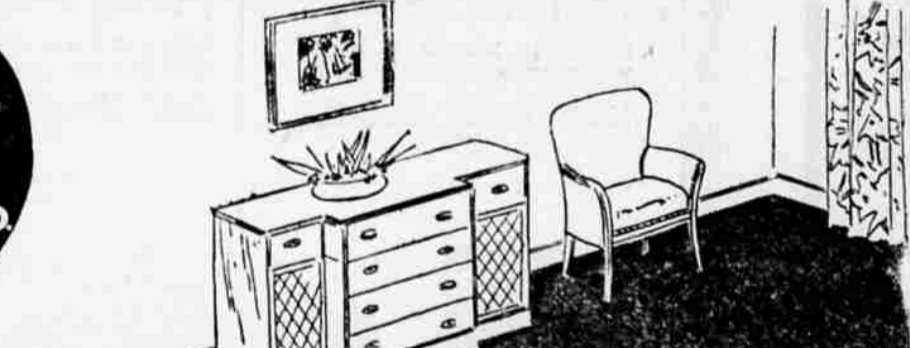
8320  
Blended whiskey, 86 proof, 70% grain neutral spirits. Copr. 1948, Schenley Dist. Corp., N.Y.

## LEARN THE TRUTH ABOUT KAISER FRAZER AUTOMOBILES

Talk to our many owners or see us!  
**CLARK MOTOR CO.**

531 So. 8th Phone 5318  
Now for immediate delivery! The new 1948 KAISER and FRAZER

- \* No Increase in Price
  - \* Liberal Allowance for your used car
  - \* No trade-in required
  - \* You pay the regular price, no cars loaded with accessories
  - \* Liberal Finance Plan through Motor Investment Company
  - \* Factory Approved Service and Parts
- COME IN TODAY AND COMPARE THE RIDE



extra heavy, tightly twisted yarns bring richness to textured

## broadloom

yours for color-swept, dramatic rooms

5<sup>95</sup> square yard 7<sup>49</sup> square yard 8<sup>95</sup> square yard

Your rooms take their cue from carpeting, and any room — period or modern, large or small — becomes instantly more spacious when a single, tasteful carpet color flowing wall to wall is added. See what wonders Harmony House seamless frieze broadloom can work in your home . . . how the "pebbled" texture, brought about by tightly twisting the yarns, catches the play of light and shade, resists footprints or soil; how over 10,000 tufts of heavy, 2-ply 100% wool yarn in every square foot give the deep, luxurious pile extra durability. Choose from inspired Harmony House shades . . . Sage Green, Down Gray, Valley Rose, Heritage Wine, Parchment Ivory, Colonial Blue or Rose. Quality carpeting . . . lower-priced!

- 9 and 12-foot widths
  - Finished Ends
  - Rug Pad, 40-oz. 1.00 square yard
- INSTALLATION ARRANGED FOR

Make Purchases of \$10 or More on Sears Easy Terms

"Satisfaction guaranteed or your money back" **SEARS**

Store Hours: 9 to 5:30  
133 So. 8th Phone 5188



special purchase!

sensational values in reg. \$16 to \$18<sup>95</sup>

# toppers



• smart detailing  
• graceful flares  
• yoke backs  
• cuff effects  
• rich fabrics

Be here early tomorrow — you won't want to miss these values! Just imagine such best-seller styles, brand new, outstanding in smartness and quality. Perfect topper coats to toss over everything from slacks to formals. Wonderful choice of popular colors, checks, and plaids. Misses' sizes

Buy anything totaling \$10 or more on Sears Easy Payment Plan

"Satisfaction guaranteed or your money back" **SEARS**  
Store Hours 9 to 5:30  
133 So. 8th Phone 5188

## EASY...FUN to paint up



with amazing new **FLEX** \$2.04 Qt.

Made especially for amateurs! Flex's gay, bright colors brush on super-smoothly... dry fast without streaks. Long-wearing on furniture, most everything inside and out.

14 brilliant colors — plus 4 natural wood stains.

Now at your **GENERAL PAINT DEALER**

- General Paint Store 515 Main, Klamath Falls
- Cummins Hardware 4621 So. 6th, Klamath Falls
- Favil West Tulelake, Calif.
- Van Meter Hardware Malin, Ore.