

# Host School To Be Given In Klamath

PORTLAND, April 5 (Special)—In cooperation with the Klamath County chamber of commerce presentation of a tourist host school, April 7, 2 p. m. and 8 p. m. Elston Ireland, president of the Associated Restaurants of Oregon, has completed arrangements to import William F. Wheeler, internationally known restaurateur, to conduct special classes for hotel and restaurant personnel.

Arrangements for the cooperative plan were completed in Klamath Falls by Avis McConnell, Pelican cafe, and R. C. Woodruff, Lost River dairy. Enrollment for the course may be made with either party.

Wheeler was virtually born and raised in the hotel business and has a background of some 15 years' experience. He started as a bellboy at the Huntington hotel in Pasadena and progressed through a series of jobs to become assistant manager of the Royal Hawaiian at Honolulu. During the war he was military manager of the famous Albergo Hasseler hotel in Rome. After the war he was assigned western division hotel and restaurant specialist for the California wine advisory board.

In his course he will present two sound films, entitled "Daily Double" and "By Jupiter." Both films are deemed top visual educational material and are recommended by the Oregon Advertising club as excellent training media for building the tourist business in Oregon.

Roscoe Watts, the Associated Restaurants of Oregon field secretary, will be sent to Klamath Falls to cooperate with Wheeler.

# Third Party Drive Started

PORTLAND, April 5 (P)—An Oregon Progressive party, organized here by Wallace-Taylor presidential supporters, began working today to put the party on the November ballot.

Chairman Nels Peterson said the new political organization would seek signatures needed to file the third party ticket with the secretary of state for the election.

Peterson is co-chairman of the Oregon chapter, Progressive Citizens of America. The recent PCA state convention failed to initiate the third party movement in Oregon, referring the issue to its directors. The executive director of the new Oregon organization is T. G. Moore, also PCA executive director. Both leaders of the Wallace supporters are Portlanders.

Selection of other officers was left to an executive board after floor nominees declined election at the Saturday session.

Two democratic precinct committees in Portland left the meeting when defeated in a move to include Russia among "fascist-monarchic" countries. A party policy statement objected to U. S. support of Greece, Turkey, China, Spain and Argentina. Clyde Ward asked that Russia be included, but Chairman Peterson ruled the motion out of order. Ward and Otto D. Drain, who had seconded the motion, then left the meeting.

# Woman Recovering From Long Fall

PORTLAND, April 5 (P)—Mrs. Margaret Albertson, 70, is recovering from a seven-story fall from a hotel window here more than a year ago.

St. Vincent's hospital reported the woman soon can go home. Her drop was broken by a canvas awning over the sidewalk at the Park hotel. She had suffered multiple fractures of the chest, legs and pelvis.

The woman said after the accident she had become dizzy while looking out the open window and lost her balance.

Little Ads get Big Results. Use The Herald and News Want-Ads!

**Calling ALL Car Owners!**

We Offer **PROMPT, COMPLETE SERVICE** For ALL Makes!



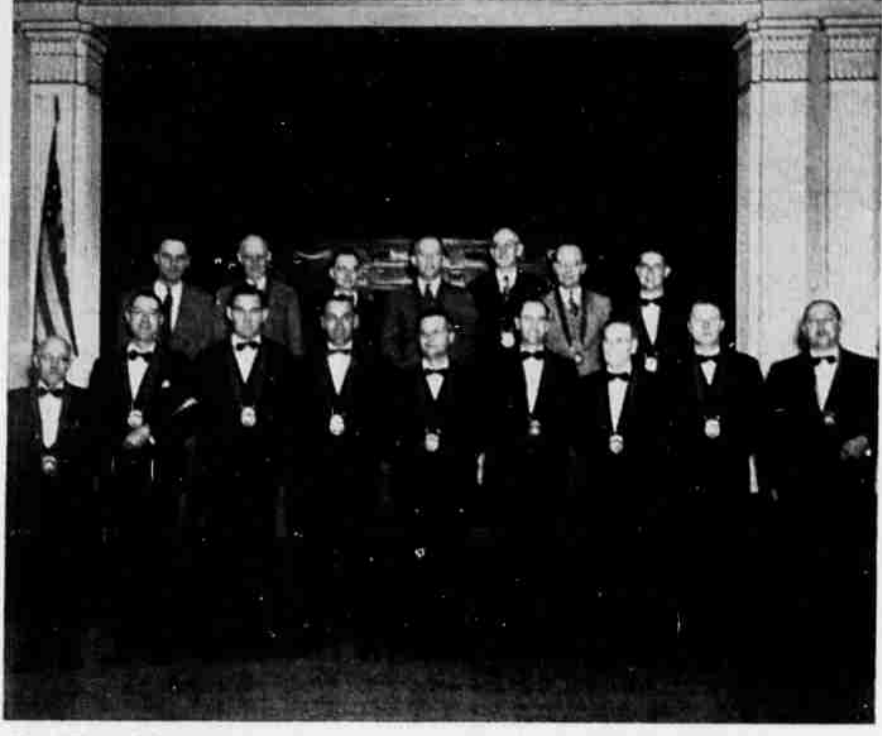
We're Ford specialists but we have men who are factory trained on all other makes, and our equipment and facilities are the finest. Treat yourself to REAL service!

**BALSIGER MOTOR CO.**

Bring your Ford HOME for Service!

Main at Esplanade Ph. 3121

# They'll Run Elks Lodge Affairs in New Year



New officers of the Klamath Falls Elks lodge, No. 1247, have just been installed. Here they are: First row, left to right, G. W. Houston, secretary; Lou Drager, esquire; Jack Brandon, leading knight; John Schubert, local knight; Glenn Evans, exalted ruler; Estin Kiger, lecturing knight; Fred Glover, tiller; Estin Balsiger, chaplain; C. M. Gilmore, assistant esquire. Rear row: Lawrence Slater, trustee; E. B. Hall, trustee; Homer Ellis, treasurer; Robert Thompson, trustee; Lloyd Goble, trustee; Lester Offield, trustee; Robert Drago, inner guard.

# Couple Continue Horseback Trip

HOOD RIVER, April 5 (P)—The Rev. John W. Beard and his wife were riding the Old Oregon trail east of here today after a weekend rest from their horseback trip retracing the historic route.

The retired Portland Presbyterian pastor said the weather had not been pleasant since they started from Portland last week, but they hope for better traveling conditions

east of the Cascade gorge. They hope to reach Independence, Mo., in four months. The Rev. Mr. Beard conducted burial rites in White Salmon, Wash., yesterday for William J. Underwood, a descendant of the founder of Underwood, Wash.

**HOTELS**  
OSBORN \* HOLLAND  
EUGENE, ORE. MEDFORD

Thoroughly Modern

Mr. and Mrs. J. E. Earley and Joe Earley  
Proprietors



ORDER NOW FOR MEMORIAL DAY  
**KLAMATH MONUMENT CO.**  
320 NORTH 19th PHONE 8228

# Stevenson Speaks For Tax Slashes

J. C. Stevenson, Macdoel rancher and candidate for supervisor of Siskiyou county, district 1, is campaigning for a reduction of county taxes but agrees that a tax reduction will be difficult because of increased costs of county business.

Stevenson will compete in the June 1 primary election with George Yost of Tulelake and Gordon Jacobs of Hornbrook. Jacobs is the incumbent supervisor.

The Macdoel rancher says he will work for a reduction of taxes if it is possible to reduce them, and that he will see that county money is wisely spent so that Siskiyou people will feel they are getting full value for their money.

Stevenson, in his campaign platform, urges an equalization of tax

assessments and consideration of the northeastern part of the county's need for a hospital.

"It is not my wish to criticize an office person, but to work cooperatively for the betterment of the county with my especial interest toward district 1," Stevenson declares.

**COMMENT**

LONDON, April 5 (P)—The communist Daily Worker published an editorial today about the imminent inception of the European relief program.

It was entitled: "Dried Eggs In Sight."

**PARK VIEW CONVALESCENT HOME**  
Formerly of Ashland  
900 West Main Street  
Medford, Oregon Phone 7018  
24-Hour Service Registered Nurse in Charge

**Delicious Glazed Donuts**



**New Low Price . . . 50c Doz.**

**DOG BITES FOX**



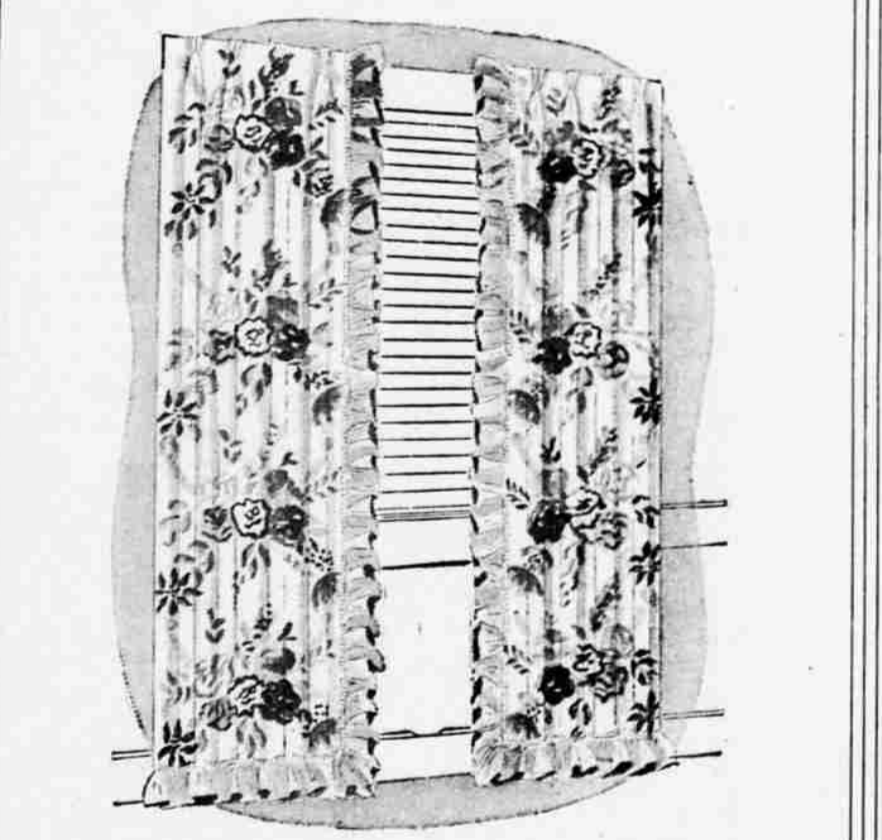
Scotty means no harm—but the owner of that fur neck-piece won't like it! She'll expect the dog's owner to make good for the damage. Such losses are among the many covered by Comprehensive Personal Liability Insurance.

**T. B. WATTERS**  
107 N. 7th St. Phone 4193  
Representing  
BARTFORD ACCIDENT AND LIABILITY GROUP  
Bartford, Connecticut

*Montgomery Ward*

Store Hours — 9:00 a. m. to 5:30 p. m.

9th at Pine Phone 3188



They're Here!

# Paper Draperies

- Fireproof and washable.
- For summer cottages.
- Each Side 31"x2½ yds.
- Money-Savers deluxe.

**100** pair

—MAIN FLOOR—

*Montgomery Ward*

9th at Pine Phone 3188

Store Hours—9 a. m. to 5:30 p. m.

**SAVE \$25 EXTRA!**



**7-Pc. Bedroom Outfit**

**14988** complete

On Terms: \$15 Down, \$10 Monthly

- 3-Pc. Bedroom Suite including Bed, Chest and Vanity, Regularly 124.00.
- 180-Coil Comfortable Innerspring Mattress, Regularly 28.95.
- Double Deck Platform Spring for proper Mattress support, Regularly 18.95.
- Pair of Plumply Filled Feather Pillows, Regularly 3.96 pair.

Furnish a complete new Bedroom in one quick stop . . . at one low Outfit Price! You'll get a handsomely styled bedroom suite including bed, roomy chest of drawers and vanity with Plate Glass mirror! You get one of Wards fine quality Innerspring mattresses with a platform spring. And, you get a pair of plumply filled feather pillows to complete the outfit. Everything you need for a comfortable bedroom . . . at one Low Price!

ASK ABOUT WARDS MONTHLY PAYMENT PLAN

—2ND FLOOR—