

Four Klamath County 4-H Members Enter Stock In Grand National Exposition

Two boys and two girls from Klamath county 4-H clubs have entered livestock in the 1948 Grand National Junior Livestock exposition, according to Francis Skinner, county club agent. The exposition will be held in San Francisco's huge Cow Palace March 20 to 25 inclusive.

Exhibitors and their entries are: Malin Beef club, Elliott West, one Angus steer bred by Gerald D. West; Kathleen Wilson, one Angus steer bred by C. V. Barton; Patti Smith, one Hereford steer bred by Lewis I. Andra; Bonanza Beef club; Vernon Haley, one Hereford steer bred by Cecil C. Haley.

The Danish system of judging which places the animals in the actual commercial grades under which the youngsters must operate when they become adult producers, has again been adopted for this year's show upon the recommendation of agricultural educators and industry leaders.

Showmanship classes will be open to the young exhibitors in every division of the livestock show. Also these club members will receive practical training for their livestock future. A junior livestock judging contest will be an important feature of the show. The 4-H club boys and girls will be permitted to compete against one another on the expertness of their own judging. They will be required to judge two classes each of market beef cattle, sheep and hogs, as well as rate one class of ten animals for each type of livestock, which will be placed or graded in accordance with market grades.

The animals will be judged Monday and Tuesday, March 22 and 23, with the beef cattle auction sale being held at 2 p. m. Wednesday, March 24.

The calves will be trucked to San Francisco on Thursday, March 18, by Earl Wilson, leader of the Malin Beef club. The following day the club members will travel by car to the exposition.

Also attending the exposition will be Mr. and Mrs. Gerald D. West and Mr. and Mrs. J. Z. Smith of Malin, and Mr. and Mrs. Cecil C. Haley of Bonanza.

Farm Hearing To Be Held

A Pacific Northwest farmer hearing will be held in Spokane, Wash., on March 25. This is the same congressional hearing which was originally scheduled for Spokane last December.

Chairman Clifford R. Hope of the agriculture committee has announced that it will be a public meeting. Farmers are both invited to attend the hearing as spectators or to give evidence.

Hope and the members of his committee are visiting the Northwest to get farmer recommendations for a long-range national farm program.

Testimony will be limited to individual farmers. Hope indicates that official spokesmen for farm organizations will not be heard at this Spokane hearing.

Farmers who are interested in appearing before the committee are invited to make known their names and addresses. They should write to Donald J. Bowsher, Chamber of Commerce, Civic building, Spokane 8, Wash. The complete list of names will, in turn, be forwarded to the house agriculture committee. Hope will then announce who will be heard.

The hearing itself has been limited to one day. Testimony will be heard starting at 9:30 in the morning of March 25. The exact location of the Spokane hearing will be announced later.

Daylight Saving Hearing Held Off

PORTLAND, March 18 (AP)—The Portland city council postponed action Wednesday on a resolution calling for a public hearing on establishment of daylight saving time. The resolution was shifted to next week's calendar when Commissioner Fred Peterson, one of the major opponents, was absent.

FASHION CLEANERS

SPECIAL 4-HOUR SERVICE 2-DAY REGULAR SERVICE
129 S. 7th Phone 5563

50% More ULTRA VIOLET RAYS!

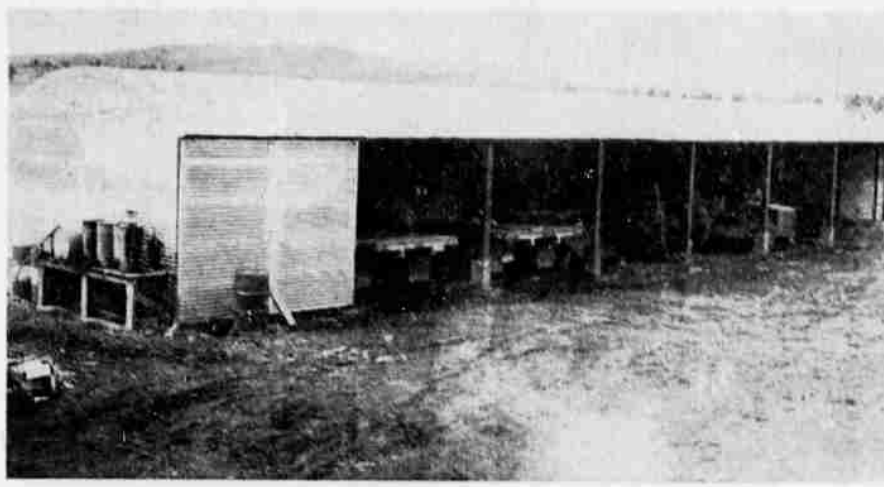
with "GERLINGER" built Greenhouses!



Complete as shown: (18x12-ft.) Ready to Set-Up easily by yourself, any time, any place. Immediate Delivery: FHA-Terms: Moderately priced; Write

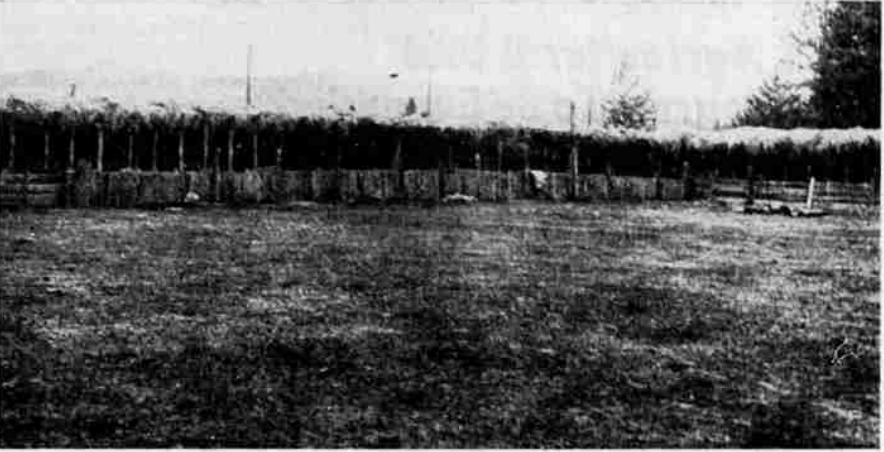
GERLINGER Lumber & Supply Company
P. O. Box 332, Salem, Oregon

Quonset-Type Equipment Shed And Cow Barn



Easy to put up, fireproof, and they need no insurance, are these curved metal buildings, used on the A. C. Millenau dairy in Bonanza. The 10 Guernsey and Jersey cows are housed in one of the quonset buildings and all the farm equipment is sheltered in the same type structure with concrete foundations and metal sides and roof. Millenau bought the ranch in 1927. A. V. Evans is a partner here and "major-domo."

More Sheds For McCartie Woolies



Jerry and Charlie McCartie started raising sheep in Bonanza district when they first came here from Ireland in 1912. They have Rambolders and Hampshires, now counted in the neighborhood of 2200, not including lambs. This is lambing time on the McCartie sheep ranch and a new long shed has just been completed, making five in all. Each shed has 21 pens with 10 ewes to a pen. The ewes and lambs are kept separate. Sheds are built of wood, straw-thatched with overhanging brows like an English cottage.

The Land of
POWER FARMING
AND OTHER ENTERTAINING FILMS

FREE MOVIES FOR FARM FAMILIES

Monday, March 22 — 2 p. m.
Klamath Falls
Compliments of
GARRISON
Equipment Company
1948 S. 6th Phone 7312

You're Invited to see these absorbing moving pictures of special interest to farmers at a limited showing... exclusively for farm families. Two feature films in color. "The Land of Power Farming" and "The Prairie Mulcher" plus other shorts. Don't miss this show!

FREE DOOR PRIZES, TOO!

Poe Valley Cemetery To Be Expanded

Expanding and improving the historic old Bedford cemetery in Poe valley has become a community project with adjacent land donated by Mr. and Mrs. Francis Freuer.

Cash contributions were made by residents of the valley community who also supplied machinery, time and labor to improve the grounds. A work party was arranged Monday and Tuesday of last week using a bulldozer, tractors and cartloads to level the ground and remove rocks and rubble. Steel posts have been ordered and wire fencing donated to encircle both the old and new sections of the cemetery. A well will be dug and hand pump put in to supply water to improve the grounds.

The cemetery located on the cut-off road from Malin to Bonanza just past the Rocking H ranch on the Freuer place, was named for the pioneer post office called Bedford. The post office was a cup-board for mail in the Edward Freuer home situated on land now part of the C. V. Barton ranch.

Freuer named the post office "Bedford" in memory of the home he had left in England in 1882. When a stranger died in the community in 1900 there was no cemetery so Edward Freuer donated an acre of land for a burial ground and called it Bedford also. The same year the Bedford Mutual Burial association was incorporated.

There are tombstones in the old graveyard bearing weathered legends of the life span of some of the early settlers of this Klamath region, including one for Mrs. Della Prentice buried in 1886, Mrs. Rob Wallace in 1897 and James Kinney in 1898.

The first directors of the association were John B. Griffith, president; Charles M. Gardner, secretary; Mrs. Clara Moore, Mrs. Lou Phamstiehl and Frank Van Meter, all now deceased.

The original ground was surveyed by John Griffith and plotted by Charles Gardner in 1900.

In the old days in this country Decoration Day was observed in June because there were more flowers, both wild and garden type than in May. People came from far and near in buggies and on horseback to work in the cemetery and decorate it. Picnic lunches were brought and eaten in the shade at the Freuer place and afterwards were spent listening to fitting sermons and singing hymns.

KIRBY
Vacuum Cleaners
Lifetime Guarantee
Free Demonstration
Telephone 9200

Let "Butch"
take over your pork and beef!
We will cut up and wrap your beef—cut, cure and wrap your pork for the locker.
SMOKE HOUSE
A. G. "Butch" Zwigart
Klamath Falls Phone 7060
127 Market

You Save Irrigation Costs with CONCRETE PIPE

Leaky Ditch Banks

will drain out valuable ground, and at the same time rob the stream flow to where the water is vitally needed. You can do away with this loss forever by installing a permanent, underground concrete pipe irrigation system.

Now is the time! We will be glad to go out and check over your ground and make recommendations on the installation.

PHONE 4265
Klamath Concrete Pipe Co.
Division of PEYTON & CO.
805 Market Street

WEED CONTROL * WEED CONTROL

ATTENTION FARMERS
Don't Overlook
WEED-NO-MORE
and
Low Pressure Sprayers

Products of
Sherman-Williams Research Department
SIMPLE—PRACTICAL WEED CONTROL EQUIPMENT

DELIVERED PRICES

No. 20 Standard Model.....	18-foot boom 161.25
No. 20 Deluxe Model.....	18-foot boom 242.25
No. 20 Deluxe Model.....	30-foot boom 293.00

—Fits Almost Every Tractor—

* * *

Weed-No-More

50-Gal. Drums.....9.65 per Gal.	5-Gal. Cans.....10.05 per Gal.
30-Gal. Drums.....9.85 per Gal.	1-Gal. Cans.....10.30 per Gal.

"A Little Goes a Long Ways"

ORDER NOW... We have a limited supply on hand.

For information call H. H. Franklin, 7425 or 5080 evenings.

PEOPLE'S WAREHOUSE
1425 So. 6th Authorized Dealer Phone 7425

WEED CONTROL * WEED CONTROL

Weed Control with
DUPONT 2,4-D Weed Killer

DUPONT 2,4-D WEED KILLER
contains 33.5% sodium dichlorophenoxyacetate (75.9% acid equivalent). It is a water-soluble, highly concentrated weed-killer — non-corrosive, non-flammable, non-poisonous to livestock. It will not deteriorate with age. Rain will not impair its efficiency once the solution has dried on the foliage.

HOW DUPONT 2,4-D KILLS WEEDS
Used as a spray or mixed with suitable diluents as a dust, killing action usually shows in the first week. Weed stems bend, twist and split. Later, foliage turns yellow and the weeds die, roots and all.

EASY TO MIX—EASY TO APPLY
Du Pont 2,4-D is soluble in water. Use practically any type of power spraying equipment. Applications on small areas can be easily made with a hand sprayer. Spray top surface of the foliage until dripping wet... avoiding a large amount of "run-off."

Brown Equipment Co.
3049 So. 6th Phone R247
With Following Dealer Locations:
OLE JAMINSON, with Crawford & Wolfe, Tullake
TROY V. COOK, Klamath Falls — CLIFF SEWALD, Dairy
FRED BALL TRACTOR CO., Alturas
BROWN EQUIPMENT CO., Lakeview

Draft Unit for Wheel Tractors
Something New In Tractor Mounted Equipment

For—
CULTIVATING
CHISELING
SUB-SOILING

—and Other Types of Agricultural Work

Drop in and let us show you the advantages of this new draft unit. Ask the man who owns one!

Have your spring work done NOW and avoid the spring rush.

- Moleboards Slatted
- Plow Share Sharpening
- Disc Rolling on Factory Machine
- Hardfacing

Metz Brothers
TULELAKE, CALIF. PHONE TULELAKE 2171