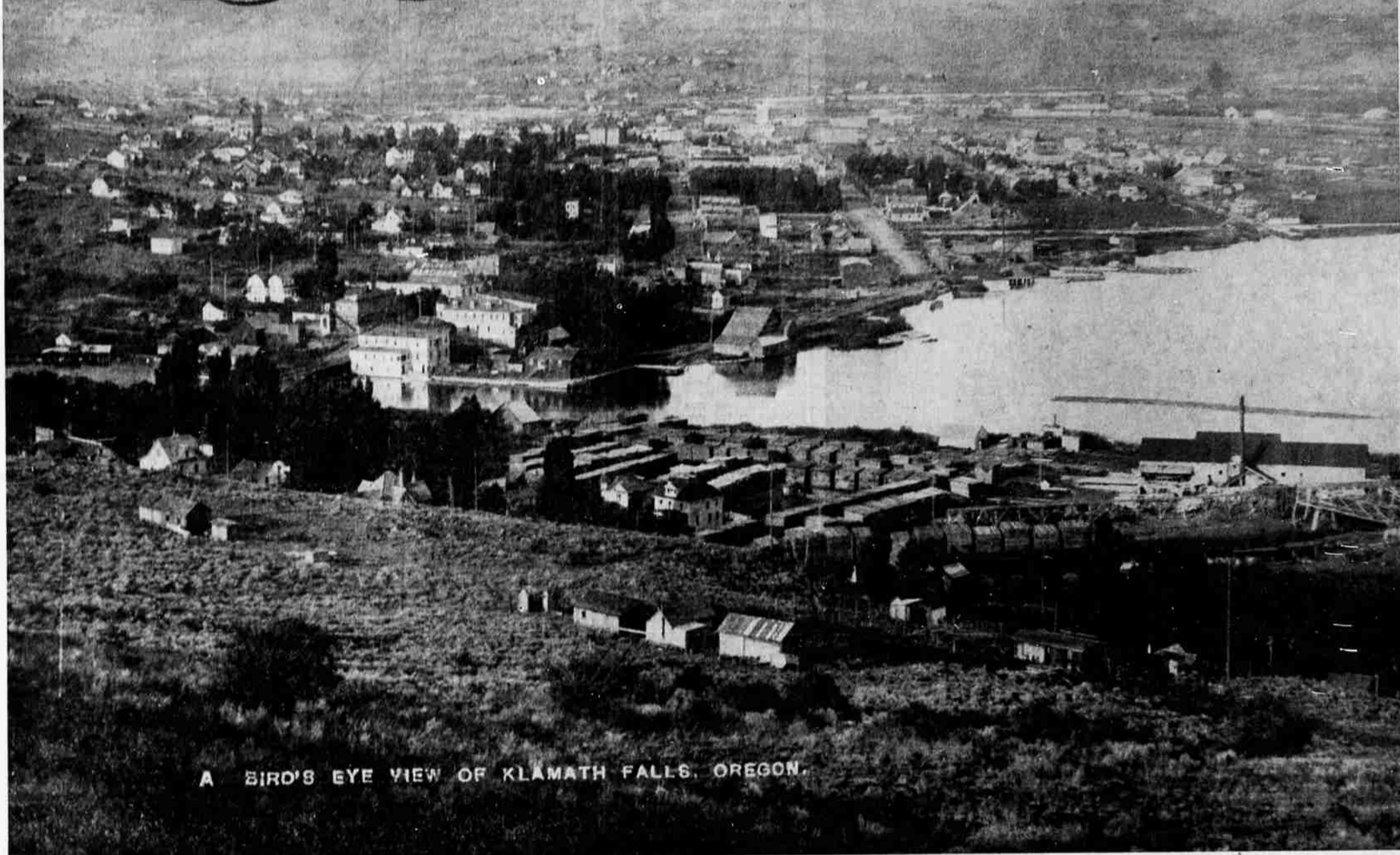


Photographic History



A BIRD'S EYE VIEW OF KLAMATH FALLS, OREGON.

State To Go Into Ferry Business

By The Associated Press
Gov. Mon Wallgren and the Washington toll bridge authority ordered the first preliminary steps today to "put the state in the ferry business" on Puget sound.

The governor's announcement that the state "definitely" planned to operate a fleet of fast, new vessels on the ferryless sound was made last night after an all-day meeting with the authority.

Briefly, this is what Wallgren said has been done to solve the transportation crisis resulting from the Puget Sound Navigation company's cessation of intra-state service six days ago.

Bond Issue Studied
State accountants have been assigned to determine the amount of a bond issue needed to finance a state ferry system, estimate fares, draw up schedules and compile other data.

The W. C. Gilman company, of New York, has been hired to conduct a traffic survey for the benefit of prospective investors. Similar traffic counts were made by the Gilman accounting firm for the Lake Washington floating bridge and Tacoma narrows bridge.

The head of the Henry Kaiser Swan Island shipyard in Portland, Ore., will confer with the toll bridge authority in Olympia either Sunday or Monday on the proposed construction of "six or eight" new boats. Representatives of the yard met with the authority yesterday.

Wallgren did not estimate the amount of the contemplated bond issue but said "it would be one of the best propositions this state ever offered to an investor." The issue would also include construction of the Agate Pass bridge.

He promised that fares would be lower than any ever offered on the sound before.

Police Seize Jew-Bound Arms

PARIS, March 6 (AP)—Police said today they had seized five tons of arms destined for Palestine and arrested 15 persons.

They said the chief of the band was Louis Rawa, 26-year-old Polish Jew, who told them he belonged to Irgun Zvai Leumi, Palestine Jewish underground group.

NEW LOCATION!
McAtee Clinic
2903 South 6th
Dr. Wayne McAtee
Osteopathic Phys. & Surgeon
Ph. 3171

Klamath In Its Teen-Age

Today's old-time picture shows Klamath Falls as it looked about 1913 or 1914, when it was beginning to take on some of the aspects of the much bigger city it is today. The town had now spread far out from the little settlement around the Link river bridge that was the pioneer community. There was a scattering of houses even out in the Hot Springs district, and the White Pel-

ican hotel had been constructed at what is now the site of the Balsiger building, Main and Esplanade. Those were the days when Klamath had an important waterfront. The white building on the river was used as a terminal for river transportation from Keno and Lower Klamath lake. The next building away from the river is the old Lakeside Inn hotel.

US Warships Slate Cruise

ROME, March 6 (AP)—A Mediterranean cruise by 15 United States warships is planned in the next two months, a high U. S. naval officer said yesterday.

The officer, attached to the U. S. embassy here, said it would be a "routine cruise" by a force including three cruisers and an aircraft carrier.

He discussed the cruise when asked to comment on a Tunis (Tunisian news agency) dispatch saying 30 U. S. warships were concentrated at Gibraltar.

The officer said the 15 ships, most of them destroyers, had replaced an equal number of U. S. vessels which left Gibraltar for the U. S. March 2. He added the cruise would take the naval force to Africa, the Near East, Italy, Southern France and Spain.

Golfer Admits Ride Slaying

PORTLAND, Ore., March 6 (AP)—Sheriff's Deputy Walter Graven said Arnold "Bud" Inman, 35, well-known local amateur golfer, today admitted slaying his filling station partner with a ball peen hammer.

The body of Inman's partner, Everett L. Keith, 40, was found face down in a slough north of Portland Wednesday and the trail first lead to Inman yesterday when blood-covered clothes found under

a highway viaduct were identified as his.

Graven said Inman was questioned steadily for hours and after first denying knowledge of the killing early today changed his story. Graven quoted him as saying the two men fought—after an argument over stepping on some coils or the floor—in the back room of their service station. The deputy said Inman told him when he hit Keith with a hammer and the latter slumped to the floor, he became panic-stricken, stuffed the body in the trunk compartment of his car and drove to Vainport City where he dumped it over an embankment.

Inman's statement was given orally but Graven quoted him as saying he would sign it. No formal charge has been filed but Detective Chief William Browne said Inman has been booked for first degree murder.

Prominent in amateur golf here for years, Inman in 1935 qualified for the National Public Links Golf tournament.

Classified Ads Bring Real Results!

F. W. BERTRAM
JEWELER
Watch Repairing
629 MAIN

CARD OF THANKS
We wish to extend our heartfelt thanks and appreciation for the acts of kindness, the messages of sympathy and the many beautiful floral offerings during our recent bereavement.

Mrs. Gertrude Roper and family.

Ralph's Mobil Service
Motor Tuning • Brake Service
Lubrication

See Ralph Before Buying
TIRES AND BATTERIES
11th & Klamath Phone 5422

Sea Food Dinners

French Fried Prawns
Steamed Little Neck Clams
Flanked Salmon Steak
Bar-B-Q Crab
Cracked Crab

Sunday, 4 p. m.
Weekdays 6 p. m.
KENO HIGHWAY
Telephone 7980

The LOG CABIN

BLANCKELL

MANY DESIGNS from which to choose. Get our prices. Compare

The Oregon Granite Co.
H. H. Watermire
P. O. Box 936, Klamath Falls, Oregon

THE RAINBOW LINE OF GRANITES

CARD OF THANKS
We wish to extend our heartfelt thanks and appreciation for the acts of kindness, messages of sympathy and beautiful floral offerings for our beloved husband and father.

Mrs. John G. La Fleur
Mrs. Curtis Jones

PARK VIEW CONVALESCENT HOME
Formerly of Astland
996 West Main Street,
Medford, Oregon. Phone 3938
24-Hour Service. Registered Nurse in Charge

PLUGGING ALONG in a car or truck that's lost its "drive"

TUNE-UP NOW

AT ROSE MOTORS

If your car or truck is just "plugging along" . . . stop power slipping past the pistons. Don't let a greedy carburetor guzzle gas by the gallons and put out a quart's worth of miles.

A Rose Motors tune-up puts your car back on the maximum power, maximum gas mileage basis. Wasteful power leaks are plugged. Everything that might mean faulty operation is checked, tuned, adjusted, tightened.

Save the small cost of a tune-up ten times over in lower gas and repair costs. More pleasant driving too, with knocks and noises eliminated and a smooth running engine working quietly, efficiently.

Tune-up now! Where the basin's best motor men give thorough, no slip-up service; where Dollar Diplomacy means a low cost job—at Rose Motors.

REPAIR TODAY ON TOMORROW'S PAY

CALL ROSE FOR TOWS --- Phone 3164

HOME BASE for KLAMATH BASIN TRANSPORTATION

ROSE MOTOR CO

CORNER OF FOURTH AND KLAMATH

* VICTOR * DECCA * COLUMBIA * CAPITOL *

AT DERBY'S!
IN PERSON

"SPADE" COOLEY

Tuesday Afternoon
At 3:30

To autograph your favorite "Spade" Cooley RCA Victor record!

COME IN AND MEET "SPADE" — IN PERSON!

Remember the Dance—Tuesday Night at the Armory—A Baldy Evans Attraction

Derby's Music Co.

120 North 7th Fine Musical Instruments Phone 4519