

Chile Moves On Antarctic

Bernardo O'Higginsland Military Bases Planned

By The Associated Press
SANTIAGO, Chile, Feb. 18 (AP)—Chile's president moved to establish a military base in disputed Antarctic territory today after invoking the Western Hemisphere defense pact to bolster his nation's claims.

While Britain hinted an appeal to the United Nations and Australia weighed sending a warship to the Falklands, Chilean President Gabriel Gonzalez Videla pushed farther south on his spectacular expedition to set up the base on what Chile calls Bernardo O'Higginsland.

The site is on part of the territory known as Grahamland, which is claimed by Britain. It lies astride the Antarctic Circle.

Dispatches of the Santiago newspaper Mercurio from the president's ship, the transport Presidente Pinto, quoted Gen. Ramon Canas Montalva, Chilean army chief-of-staff, as saying the president's action is a step toward "building up Chile as a South Pacific power."

Decisive Policy
"Chile is beginning one of the most decisive visionary policies in its continental mission, facing the Pacific," Canas said.

He recalled that O'Higgins, the hero of Chilean independence, once declared that "a glance at the map of South America is enough to show Chile holds the keys to this vast portion."

The British have protested both Chilean and Argentine activities in the Antarctic and have announced they will support British Governor Miles Clifford of the Falklands in these issues. The British insist the Falkland administration covers Grahamland, Greenwich and other islands. The British have sent the 800-ton cruiser Nigeria into the Antarctic to "show the flag."

The Chilean president landed at Greenwich island yesterday. Addressing Chilean troops there, he declared that any attempt by a foreign power to seize territory claimed by Chile in the Antarctic will be considered an "aggression against all the nations of the Americas."

"The bad habits of antiquated European imperialism threaten with armed violence to seize these lands of ours from Chile and America," Gonzalez Videla said in an obvious reference to the Western Hemisphere pact approved in Brazil last August and binding the American nations to mutual defense.

British Claims
Britain claims territory both east and west of the 70th parallel, which Argentina and Chile consider their boundary below the South American continent. Britain says the island groups there are part of the Falklands group, whose main islands are off Argentina's east coast.

Both Argentina and Chile have laid claims in the area, which includes such groups as the South Georgia, the South Orkneys and the South Shetlands.

In London a high British government source said the three-nation dispute may be turned over to the United Nations, although Britain would prefer to see the matter settled privately.

In Canberra, Joseph Abbott, a member of the Australian parliament, asked Prime Minister J. B. Chifley whether Australia would send a warship to stand by Britain. Chifley replied no official suggestion to that effect had been made, but if it were, it would be given consideration. Australia claims big sections of Antarctica, although she is not involved in the Falklands controversy.

Gonzalez Videla stepped ashore at Port Sovereignty yesterday afternoon with his family after a 450-mile trip from the southern tip of Chile which took 56 hours. A 21-gun salute sounded amid shouts of welcome from the garrison.

POSTPONED

WASHINGTON, Feb. 18 (AP)—The senate armed services committee put off for two weeks Tuesday, a decision whether to hold hearings on proposals for universal military training.

Classified Ads Bring Results

Lubrication IS THE LIFE BLOOD OF YOUR CAR



To Make Your Car Run Better - Last Longer Let us lubricate it regularly with Ford factory recommended lubricants.

- * WASHING
- * POLISHING
- * SIMONIZING
- * VACUUM CLEANING—Really gets the dirt!
- * STEAM CLEANING—Motor and chassis. Latest type equipment.

BALSIGER MOTOR CO.
Bring Your Ford HOME For Service!
Main at Esplanade Ph. 3123

INCOME TAX RETURNS
Prepared with an eye to make available to you every legitimate deduction.
N. J. ROSENBAUM
1213 Main St.
with J. W. Sanders
Phone 7521

Sizeable Savings on **STEEL SUPPLIES** from **SESSLER!**

Whether it be used equipment or new construction supplies you will find just what you want at 534 Market street!

LOOK TO SESSLER FIRST for

- * Mill Machinery
- * Plumbing Supplies
- * Belting -- Shafting
- * Pipe Fittings
- * Boilers -- Engines
- * Lead and Babbitt
- * Beams -- Angle Irons
- * Flat & Round Pulleys
- * Welding Equipment
- * Steel Wheelbarrows

— STEEL FOR ANY JOB —
SESSLER, INC.
534 Market Phone 4862

Montgomery Ward

Store Hours: 9:00 - 5:30

Phone 3188

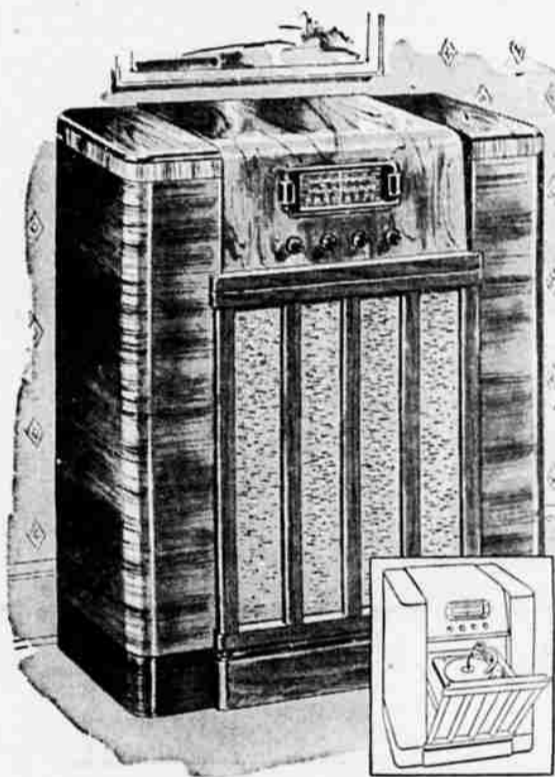
9th at Pine

Furniture Sale

Values during Wards February Furniture Sale were never better! The four units advertised here illustrate the savings every Klamathite is looking for these days.

Two Radio 'Buys'

129⁹⁵



AIRLINE AM and SHORTWAVE RADIO - PHONOGRAPH

A fine instrument — a beautiful piece of furniture! Record changer that plays twelve 10-inch records or ten 12-inch, 10 inch dynamic speaker, lustrous walnut veneer cabinet!

194⁹⁵



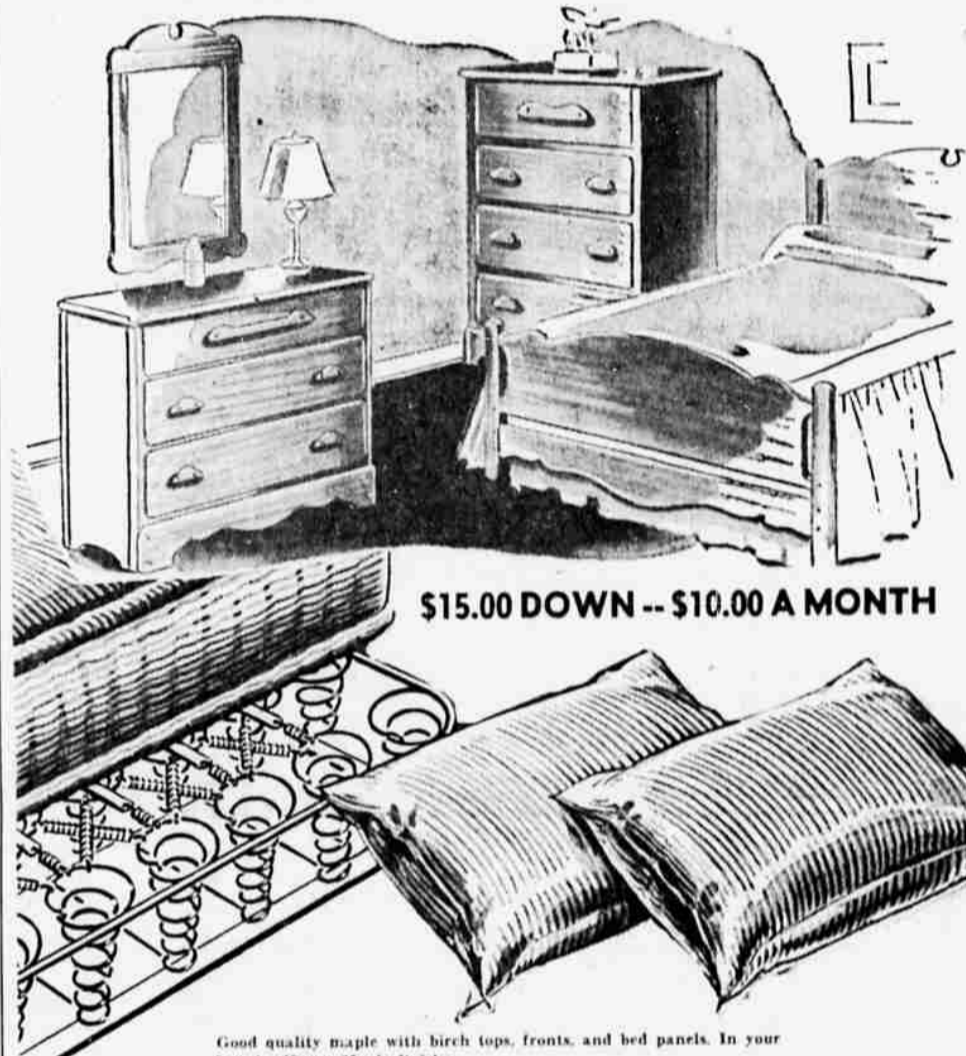
NEW AIRLINE COMBINATION AM - FM PHONOGRAPH - RADIO

Compare with other units retailing up to \$250.00! It's a sensation, not only in price but in EXTRA FEATURES! Brilliant FM, plus standard broadcast.

SECOND FLOOR

10-PIECE BEDROOM GROUP

- EARLY AMERICAN BED
- COLONIAL 5-DRAWER CHEST
- COLONIAL VANITY
- SINGLE DECK SPRING
- INNERSPRING MATTRESS
- TWO SOFT PILLOWS
- NITE STAND - BENCH
- FLORAL POTTERY TABLE LAMP



\$15.00 DOWN -- \$10.00 A MONTH

Good quality maple with birch tops, fronts, and bed panels. In your favorite Honey Maple finish.
Regular \$157.15 SALE 141.88

5-PIECE JUVENILE GROUP



- INNERSPRING CRIB MATTRESS
- PANEL-BACK HIGH CHAIR
- OBLONG PLAY YARD
- HARDWOOD CRIB
- AUTO SEAT SPRING

\$5.00 DOWN

A sturdily constructed group to take care of your kiddy at sleep, at play and while traveling!

Regular \$73.75 SALE 66.75

SECOND FLOOR

USE YOUR CREDIT . . . ASK ABOUT WARDS CONVENIENT MONTHLY PAYMENT PLAN