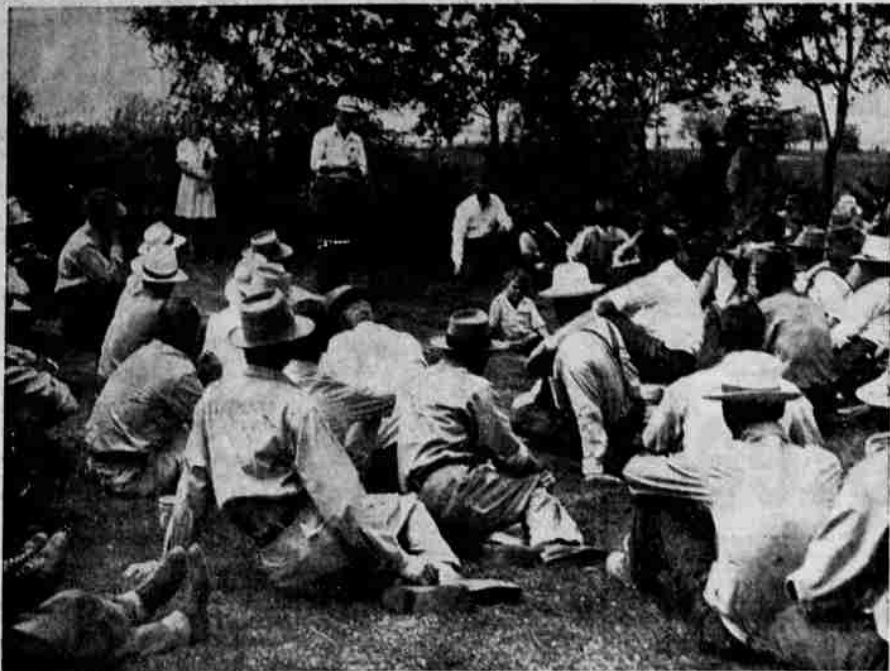


Farm Methods Told At Agriculture Field Day



A. E. Gross, agronomist at the Oregon agricultural station, told visitors how to make class five land produce marketable crops in Klamath basin. Around 200 persons interested in farm methods attended the field day tour through experimental plots on July 31.

Basin Farmers Attend Experiment Station Event

A. E. Gross, agronomist at the Oregon agricultural experiment station, welcomed around 150 visitors to the station on the annual field day held July 31.

Winter and spring nurseries and experimental plots of cereal variety tests were examined by the visitors who also saw a potato disease demonstration showing rare as well as common virus diseases for the purpose of helping growers recognize them in their early stages.

The station are of interest from the point of resistance to disease. Following a hot lunch, cooked and served by the Klamath Falls home extension unit, a trip was made to view pastures established on highly alkaline soils.

Dr. Harry A. Scotho, agronomist of Oregon State college, and Dr. D. D. Hill, also of OSC, spoke to the group, explaining experiments and trials. Jim Crane, research assistant for Gross at the station, demonstrated what can be done with class 5 lands in agriculture. Class 5 is the designation given to the poorest type of land in Klamath basin, which proves by experiments made at the station that it can produce fine crops with proper treatment.

A field day at the Tulelake experiment station was held Friday for farmers and other interested persons.

Cooperative NEWS and SERVICE

Refrigeration, Pumps --Specialist--

Introducing—D. W. Gordan—and a brand new department for the people in the Klamath Basin.

A complete service department is being built in the Tulelake Store where Mr. Gordan will headquarter. Service throughout the Basin will be maintained from here. We are fortunate in securing the services of such a widely experienced man in both all types of refrigeration and pumps. Mr. Gordan will also have charge of rural sales. Just call the Klamath Basin Coop in Klamath Falls, Merrill, or Tulelake, if in need of service or if interested in refrigeration or any type of pumps.

CO-OP Suggestions

Use Coop 2-4-D on plantain and dandelion in lawns, permanently kills and will not destroy the grass. Do not use on clover.

Use Coop 10% DDT Dust on lilac and other shrubs being attacked by the black beetle. While some call it the Japanese Beetle, we believe it to be the Blister Beetle and the story goes—that the Chinese ground them to make plasters which were placed on the abdomen of narcotic patients. The plasters resulting in blisters.

For the convenience of the people of Klamath Basin, Cooperative Service is available at Klamath Falls, Merrill, Hatfield and Tulelake.

Watch for this news item each Thursday.

Homer M. Smith, Gen. Manager

Klamath Basin Cooperative

CAVALCADE of HISTORY. Born: Boston, Mass., Jan. 17, 1706. Patriot, Scientist, Author, Philosopher, Diplomat, Statesman. Founded Sat. Eve. Post, 1728. Identified Lightning with Electricity. Invented Lightning Rod, 1750. Member Committee which drew up and signed Declaration of Independence and Constitution of U. S. Obtained aid from France in American Revolution. Founded Univ. of Penn. Died Philadelphia, Pa., April 17, 1790. BENJAMIN FRANKLIN

Ray L. Harrison of GARRISON, EQUIPMENT CO. 1948 S. 6TH ST. PHONE 7312 KLAMATH FALLS. NOW AVAILABLE! CALCO PORTABLE RAINMAKER. OVERHEAD IRRIGATION FOR LARGE AND SMALL FARMS AND GARDENS. * INCREASES YIELDS * INSURES CROPS * EASILY PORTABLE

Herald and News FARM PAGE

Feed Grains Still High On Market

Despite lower prices on feed grains compared with a week before, Pacific Northwest markets remained firm on commercial feedstuffs during the week ending July 30, according to the weekly feedstuffs review prepared by the OSC extension service from USDA market reports and other data. Offerings were rather scarce, especially of wheat feeds and standard millrun and middlings advanced \$3 a ton.

Feed wheat, oats, and corn declined about \$1.00 a ton at Portland, while barley was unchanged for the week. Chicago corn futures were up and down but closed on July 30 a little lower than a week before. September corn declined more than the other futures.

Nationally, commercial feedstuffs markets also strengthened, contrary to the decline in feed grains. The United States index of wholesale feedstuffs prices rose nearly 5 points, about 2 per cent. The feed grain price index, however, fell 7.4 points, nearly 3 per cent. These adjustments brought the relative prices of feedstuffs and feed grains more nearly into normal relationships.

The greatest gain was made in wheat feeds over the country generally, but oilseed meals and alfalfa meal were also higher. The supply of oilseed meals was reported to be diminishing. Production of wheat millfeeds continued at a high level. Feeding ratios in July have averaged somewhat more favorable for both dairymen and poultrymen in the country as a whole, than a year ago. That was owing to greater advances in prices for eggs and butterfat than for feeds. At the middle of June, a pound of butterfat would buy about 19 pounds of a representative dairy ration, against 18.5 pounds a year before. A dozen eggs would buy about 12 pounds of a representative poultry ration, compared with 9.3 pounds a year before when eggs were much lower in price.

Corn Sweeter In Afternoon

Sweet corn picked during the late morning or afternoon is sweeter than that harvested early in the morning. That is a timely garden reminder from County Agent C. A. Henderson, who explains that sugar is stored in the corn during the day and changes to starch at night. A second pointer for getting top quality in home grown garden products is to remove the tops from root crops very soon after digging. While in the ground, the plant feeds from "the soil"; but when the plant is dug, the tops draw upon the food stored in the root and thus reduce its value. This applies to all root crops, including beets, carrots, turnips and parsnips for example.

If ground is available in good shape for planting, this is a sweeter time to plant some fall spinach, mustard, turnips, radishes, and lettuce. Henderson adds. These are nutritious foods that will be helpful to the family budget later on.

CARD OF THANKS

We wish to extend our sincere thanks and appreciation to our many friends for their kind expressions of sympathy and beautiful floral tributes tendered us during our recent bereavement in the death of our beloved, husband, father, son and brother, Joe Lloyd Alvarado. Mrs. Joe Alvarado and daughters Mr. and Mrs. Joe Alvarado Sr. Mr. and Mrs. Lewis Baker and family Mr. and Mrs. Glenn Watts.

SEWING MACHINE REPAIRING. Expert, Unbiased Work (All Makes). Reasonable prices—Free Estimates. Sewing Machine Service. Year Independent Dealer. Phone 4771 5218 Shasta Way

Here It Is! 1 Tool To Do Many Jobs. COME IN AND SEE IT . . . ASK FOR A DEMONSTRATION ON YOUR FARM. GRADE AND LEVEL ROADS, BUILD TERRACES, CLEAN, FILL AND DIG DITCHES, FILL HOLES, CLEAN BARNYARDS AND SPUD CELLARS. THE DANUSER UTILITY BLADE. Fits the following tractors with hydraulic systems: Ford, Case VAC, International H & M, John Deere ABG (with Baker hydraulic control) and John Deere M. KLAMATH TRACTOR & IMPLEMENT CO. 1353 Main Phone 8801

4-H Preparing For Fair

Klamath county 4-H clubs are busy already outlining exhibits for the state fair to be held in Salem September 1 to 7.

Home economics activities including cooking, canning, preservation of food by freezing and clothing including a style review team will be exhibited and demonstrated by the local clubs plus garden produce, forestry and wood work.

Entries in various livestock divisions at the fair close August 20, but there will probably be no entries from Klamath county in this section this year, Francis Skinner, 4-H club agent said today.

There will however be a livestock judging team representing the local livestock clubs. Three club members will be selected for this team following a county-wide judging tour participated in by all members on August 23, when livestock ranches will be visited.

Stock Show Dates Changed

The dates of the 1947 Pacific International livestock exposition in Portland, Oregon, have been moved ahead of the traditional opening to October 3, it is announced by Walter Holt, manager. The show will carry through October 21.

By advancing the opening to 5 p. m. Friday, October 3, one additional evening horse show will be scheduled. This will also release one matinee date (Thursday, October 10). This will be utilized for judging P. F. A. livestock.

Exhibitors who are accustomed to the traditional Saturday opening have been urged to adjust their calendars and change dates of the Pacific International to October 3 to 11, Holt stated. This year's exposition will be the 37th annual showing of the P. I.

Direct Stock In Land Bank Retired

SPOKANE, Aug. 7 (AP)—All direct stock in the Spokane farm credit administration has been retired, making the 76 local associations of Idaho, Montana, Oregon and Washington the sole stockholders in the federal land bank here, officials said today.

R. E. Brown, bank president, said the direct stock represented loans issued directly by the bank during the depression when several associations were unable to accept loan applications.

COMMITTEE ASKED. PORTLAND, Aug. 7 (AP)—A recommendation that Portland establish a city aviation commission was made yesterday by Mayor Earl Riley and aviation and business representatives.

STEP-UP to a 6 Speed Tractor. QUICKLY SAVES MORE THAN IT COSTS. Install a Sherman Step-Up Transmission and get two more speeds between second and high gear, 18 1/2 mph highway speed, and 80% more power take-off speed. Operate the motor at half-throttle and select the best speed for the job.

SHERMAN STEP-UP TRANSMISSION. EASY TO INSTALL, PROLONGS TRACTOR LIFE AND SAVES TIME AND MONEY. KLAMATH TRACTOR & IMPLEMENT CO. 1353 Main Phone 8801

"Soup's On" At Community Picnic



Friends from as far as Grants Pass and all surrounding communities were on hand Sunday for the farewell picnic sponsored by the Henley Alumni association honoring Mr. and Mrs. Carrol Howe and their son, George. The Howes are leaving for Salem where he has accepted a position as a state high school supervisor. He has been principal of the Henley schools. Nearly 300 gathered on the Henley grade school grounds for the occasion.

Crossbreeding Not Good Idea

Crossbreeding is not a practical idea for the dairymen at present.

For his own good and for that of the industry as a whole, the dairyman should follow a sound program of using sires or sons of proved sires from tested cow families.

That is the advice given members of Oregon Dairy Herd Improvement associations in a recent letter from H. P. Ewalt, extension dairyman at Oregon State college, Corvallis.

When dairy breeds are crossed indiscriminately and the offspring are kept for dairy purposes, much that has been gained through years of selective breeding is lost, Ewalt asserted. Two animals thus mated may bring about an entirely new combination of factors in the offspring. Some unusually good individuals may result, but the percentage of mediocre and worthless animals is too high to follow this practice.

The specialist declared, "There is no sound reason for using beef or dual purpose breed bulls on dairy stock. The use of a scrub bull on dairy cows is a waste of time and money."

A bad egg floats in water because gases have formed inside it, owing to decomposition.

Duke Of Portland's Will On File

COQUILLE, Aug. 7 (AP)—The will of the late William John Arthur Charles James, sixth duke of Portland, was on file here today because the British nobleman owned five unimproved lots in North Bend with an estimated value of \$1000.

Judge L. D. Felsheim named William N. Patullo, Portland attorney, as administrator for the Oregon estate.

The will of the duke, who died in 1943, covered eight pages in disposing

of extensive holdings in the British Isles and elsewhere. He was survived by his 83-year-old widow, two sons and one daughter.

Tradition requires sharks' fins to be the third course on the Chinese wedding menu.

PARK VIEW Convalescent Home (Formerly of Ashland) 306 West Main Street Medford, Oregon Phone 1938 Registered Nurse in Charge

MADE TO MEASURE RUBBER MATS. Made from rubber tires For HORSE TRAILERS, DOOR MATS, BACK BARS. Quick Delivery - Long Lasting. CLAUDE H. DAVIS. Window Shades Venetian Blinds Linoleum Carpets 426 Main 4684

Announcing OUR APPOINTMENT AS AUTHORIZED DEALER FOR THE Ford TRACTOR and Dearborn FARM EQUIPMENT. 22 New Advantages for FASTER FARMING. We are proud to announce our appointment, effective July 1, 1947, as authorized dealer for the new Ford Tractor and Dearborn Implements. The new Ford Tractor combines twenty-two important improvements with the former advantages of Ford-built tractors. Come in and get all the interesting details. Also, for parts and service on any Ford-built tractor, be sure to call on us. Phone 4741 Tulelake. Stronghold Tractor & Implement Co. Main and D Streets — Tulelake, Calif.