

### County Group Hosts Camp

Homemakers are offered a real carefree vacation this year at low cost at Lake o' the Woods from July 23 to July 27. No children will be allowed at the camp to give mothers a complete rest from their daily routine.

The camp is sponsored by the county home economics extension committee and will feature such activities as swimming, hiking, boating and an opportunity to learn several interesting handicrafts at no cost, or a woman may just enjoy a leisurely rest at the beautiful mountain lake.

Any woman in the county who is over 18 may attend the camp whether she is a member of a home extension unit or not. The total cost of the four days vacation is \$8 and includes meals. Three dollars of this must be paid at the time of registration, and application blanks may be obtained at the home demonstration office, room 209, in the federal building.

Helen P. Stine, home demonstration agent, announces Mrs. P. H. Coe as chairman of the camp committee which includes Mrs. C. H. Kelly and Mrs. Lee Holliday of Klamath Falls, Mrs. John Lott of Chiloquin, Mrs. Barbara Tubman of Union creek and Mrs. Pauline Crockett and Mrs. Lettie Douglas of Medford.

An interesting program has been planned by the committee including evening campfires with acts put on by various groups, a camp publication with a scandal sheet and handicraft classes in textile painting, metal tooling and lamp shade construction and design.

### Movement Of Cattle Slowed

PORTLAND, July 11 (AP)—F. L. Ritter, adviser of the Oregon Meat council, charged Thursday that the new state livestock brand inspection law was slowing down the movement of cattle from stockyards to slaughterhouses.

Ritter asserted that a second brand inspection was unnecessary and caused disadvantage to packers.

Ervin S. Peterson, state director of agriculture, replied that "because this is a livestock industry law promoted by the livestock industry, it should be given a chance to operate before it is condemned by packers."

The law, drafted by livestock interests to prevent theft of cattle, went into effect only six days ago.

### Solons Disagree On Labor Bill

WASHINGTON, July 11 (AP)—The authors of the Taft-Hartley labor law disagreed Thursday as to whether the coal contract violated that statute.

Rep. Hartley (R-N. J.) had told the house yesterday that the provision regarding collection of union initiation fees and assessments was a "clear violation." He demanded that the administration prosecute the mine operators.

But Senator Taft (R-Ohio) said today he didn't think the contract is "in any way a violation of the law."

### Firemen Answer Call At Lunchroom

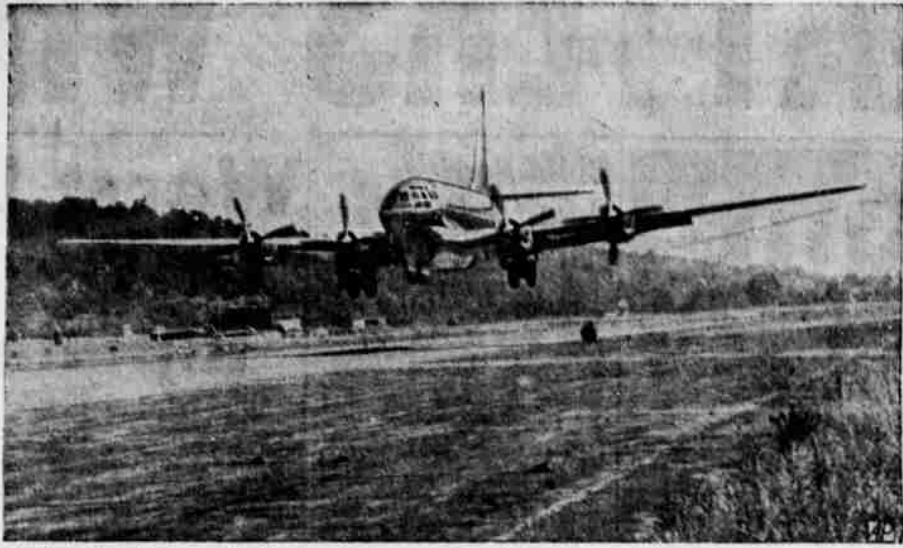
The fire department answered a call to the Rainbow Lunch restaurant last night at 9:30, where an overheated stove had caused a fire in a nearby partition.

Smoke pouring from the area at first led the firemen to believe the fire was in the Rainbow theatre, next door, but when the smoke cleared the cause was located, a hole was chipped in the partition and the blaze extinguished.

Crowds of late evening strollers were attracted to the scene when the two engines rolled up, and patrons of the theatre poured out to watch the proceedings.

Only slight damage was reported.

### Stratocruiser Makes Maiden Hop



Boeing Aircraft company's "stratocruiser," passenger-carrying counterpart of the "stratofreighter," is shown as it takes off from Boeing field at Seattle in its initial test flight. The 67 1/2 ton plane will cruise at 340 miles an hour and carry 80 passengers.

### Sackett To Complete Deal

PORTLAND, Ore., July 11 (AP)—Sheldon Sackett intends to complete the \$1,000,000 contract purchase of the Metropolitan Press here "when possible," a company spokesman said it was advised today by the Coos Bay publisher's attorney.

A 10-day extension of the date for payment of \$240,000 expires at midnight tonight and the spokesman would not comment on a possible further extension. He said, however, that Smith Davis, newspaper broker interested in the transaction, was expected here within a week. A \$50,000 down payment was made in April.

Sackett contracted to buy the printing company at about the time he also announced purchase of the Portland weekly East Side Post, subsequently returned to its former owner, and the Seattle Star, which has been rumored sold to David Stern III of Philadelphia.

### Cow Recovering After Big Binge

ST. HELENS, July 11 (AP)—Imogene, a Ghernsey cow owned by Harold Arrowsmith, was recuperating today from a binge of hard-ware.

Imogene, whose appetite had always been extensive, fell ill recently. She wouldn't eat.

Dr. C. A. Howarth, St. Helens veterinarian, investigated. From Imogene's stomachs he removed a couple of nails, wire and chunks of metal.

She's recovering on a diet of oats and hay. But Owner Arrowsmith has trouble keeping her penned; he doesn't dare let her near a barbed wire fence for fear she'll eat it.

### Sailing Farmer Takes Off Again

SAN PEDRO, Calif., July 11 (AP)—The 34-foot yawl Islander pointed westward toward the open sea as Thursday in Harry Pidgeon's third attempt to circumnavigate the world.

On his two previous trips the 78-year-old former Iowa farmer, who learned sailing on the Mississippi river, went alone. Then he was single. This time he is taking along his wife, Margaret, 53, and a friend, Vera Rideout of Chelan, Wash.

Hilo, Hawaii, is their first scheduled stop. From there they'll head for the South seas—then keep going. If they don't get back for three or four years, Pidgeon says that'll be soon enough.

### PARK VIEW Convalescent Home

(Formerly of Ashland)  
906 West Main Street  
Medford, Oregon Phone 2328  
24-Hour Service  
Registered Nurse in Charge

*It's an Aristocrat!*

You are invited Saturday or Sunday to come and see Klamath Falls' new and modern concrete tile manufacturing plant.

★

We make building tile in a variety of colors suitable for homes, garages, warehouses, commercial buildings and all types of farm buildings.

★

When you build, ask your architect and contractor about

**ARISTOCRAT TILE**  
Phone 9267

**HARVEY TILE COMPANY**  
Plant Just Off Biehn Street  
On Old Pelican Bay Road.

### LIVESTOCK

CHICAGO, July 11 (AP-USA)—Salable hogs 5000, total 8000; 25 to mostly 50 cents higher; top 26.25; bulk good and choice 170-260 lb. 23.50-26.25; 270-290 lb. 23.50-25.00; 300-330 lb. 21.75-23.50; 330-375 lb. 20.00-21.35; good and choice sows under 400 lb. 19.50-21.50; 400-450 lb. 18.00-19.50; 450-500 lb. 16.75-18.00; over 500 lb. 16.00-17.00.

Salable cattle 1500, total 1800; salable calves 400, total 400; strong to 50 cents higher; no strictly choice steers or heifers here; good to choice light steers 29.25; comparable heifers 28.75; good steers 27.00-29.00; medium to good heifers 24.00-27.25; common and medium steers and heifer yearlings closely absorbed at 17.00-23.50; culler cows 14.00 down; common and medium beef cows 15.00-17.00; heavy sausage bulls 18.50; weighty beef bulls 19.00; vealers 24.00 down.

Salable sheep 500, total 1000; fully steady; good to choice native ewe and wether spring lambs 25.50 top; few common and medium springers 17.00-22.00, medium to good 90-lb. yearlings with No. 1 pelts 20.00; common to good shorn aged slaughter ewes 8.00-7.75; choice to 8.00 and possibly above; native solid-mouthed breeding ewes 9.00.

SOUTH SAN FRANCISCO, July 11 (AP-USA)—Salable cattle none; for week, receipts 1700; steers and heifers strong; common-canner cows fully 50 cents higher; calves for week 185; steady; choice vealers \$22.00-50.

Salable hogs none; for week receipts 1100; closing top \$26.50.

Salable sheep 1200; few decks good-choice lambs offered; for week receipts 14,000; good-choice spring lambs 50 cents to \$1.00 higher; late bulk \$22.00-24.00; cull-good, ewes \$2.00-6.50.

lasippi river, went alone. Then he was single. This time he is taking along his wife, Margaret, 53, and a friend, Vera Rideout of Chelan, Wash.

Hilo, Hawaii, is their first scheduled stop. From there they'll head for the South seas—then keep going. If they don't get back for three or four years, Pidgeon says that'll be soon enough.

### New Milk Price Asked

PORTLAND, July 11 (AP)—The Oregon Jersey Cattle club said Thursday it would launch a campaign for a change in the new milk price order issued by the state department of agriculture.

C. E. Gordon, chairman of the club's milk marketing committee, declared the order reduces the return for high butterfat milk and increases it for low butterfat milk. Formerly, producers of grade A milk in this area were paid \$1.37 a pound butterfat. The new order specifies \$1.10 a pound butterfat plus \$1.20 a hundredweight milk.

Jersey cows produce a higher percentage of butterfat than other breeds, but not a larger volume of milk.

Ervin L. Peterson, state director of agriculture, said the new price formula is the one most common now throughout the country.

### Portland Visitor Gets Warm Welcome

PORTLAND, Ore., July 11 (AP)—Joe O. Deyenroth, Colfax, Wash., fire chief, came to Portland today and promptly smelled smoke.

As he climbed from his car to investigate, four fire engines roared up. The blaze was in Deyenroth's car; he'd left the emergency brake on.

**PRINTER PETE**  
Says...  
"PAINT TO PROTECT... IT PAYS!"  
Miller and Schorn Paints  
Complete Stock of Wallpaper  
• Varnishes • Enamels  
• Shingle Stain  
**PATTERSON & SON**  
PAINT STORE  
1229 E. Main Phone 3324

## MARKETS and FINANCIAL

### Stocks Leap To New High

NEW YORK, July 11—Bullish forces dominated the stock market today, pushing the industrial average to another new high for the year with leaders adding gains of 1 to around 3 points.

The forward swing was resumed at an active opening. There were subsequent slowdowns when quotations slipped a shade here and there. Steels, motors, rubbers, oils, tobaccos, rails, utilities and a wide assortment of special issues touched peak levels of the day in the final hour with the pace quickening. A little selling appeared toward the finish and extreme advances were reduced in the majority of cases at the close. Transfers of about 1,400,000 shares were among the largest since May 19.

At tops for 1947 were Chrysler, Western Union "A", American Smelting, International Harvester, Westinghouse, Union Carbide, Allied Chemical, United Fruit, Gulf Oil, Shell Union Oil and St. Regis Paper.

In front were U. S. Steel, Bethlehem, Youngstown Sheet, American Rolling Mill, General Motors, American Tobacco "B", International Paper, Colgate-Palmolive, Monsanto Chemical, Homestake Mining, Cudahy, Goodrich, U. S. Rubber, DuPont, J. C. Penney, Anaconda, Kennecott, St. Joseph Lead, International Telephone, American Power & Light, Electric Power & Light, Santa Fe, Southern Pacific and Southern Railway.

Bonds improved. Cotton hit the highest level since 1919-20 and, approaching the finish, was up \$1 to \$2.50 a bale. At Chicago wheat jumped the day's limit of 10 cents a bushel and ended up 7 1/2 to 9 cents. Corn advanced 2 1/2 to 4 1/2 and oats 1 1/2 to 3 1/2.

Closing quotations:  
Al Chem & Dye 189  
American Can 93 1/2  
Am Pow 12  
Am Tel & Tel 157  
Anaconda 38  
Atchison 85 1/2  
Beth Steel 90  
Boeing Airplane 17 1/2  
Calif Packing 29 1/2  
Canadian Pacific 124  
J I Case 39 1/2  
Chrysler 116 1/2

**KIRBY**  
Vacuum Cleaners  
Lifetime Guarantee  
Free Demonstration  
Telephone 9200

Comwth & Sou	3 1/2
Consol Edison	26 1/2
Cons Vultee	13 1/2
Cont Ins	53
Crown Zellerbach	30
Curtis Wright	5
Douglas Aircraft	57 1/2
DuPont Dene	196
General Electric	38
General Foods	42 1/2
General Motors	60 1/2
Goodyear Tire	48 1/2
Gr Northern Pfd	43 1/2
Int Harvester	94
Int Paper Pfd	106 1/2
Johns Manville	44 1/2
Kennecott	47 1/2
Long-Bell "A"	18 1/2
Maytag	10
Miami Copper	15 1/2
Montgomery Ward	61 1/2
Nash Kelvinator	17 1/2
Nat Dairy	32 1/2
N Y Central	16 1/2
Northern Am Co	25 1/2
Northern Pacific	19 1/2
Pac Am Fish	13
Pac Gas & Elec	41
Pac Tel & Tel	103
Pan American	11 1/2
J C Penney	47 1/2
Radio Corp	9 1/2
Rayonier	23 1/2
Reynolds Metals	34
Richfield	16 1/2
Safeway Stores	24
Sears Roebuck	16 1/2
Sinclair Oil	16 1/2
Southern Pacific	45 1/2
Standard Brands	29 1/2
Standard Oil Calif	61
Stewart Warner	16 1/2
Studebaker Corp	20 1/2
Sunshine Mining	10 1/2
Union Oil Calif	22
Union Pacific	137 1/2
United Airlines	22 1/2
United Aircraft	78
U S Steel	70
Warner Bros Pic	16 1/2
West El & Mfg	29 1/2
Woolworth	49 1/2

**POTATOES**  
CHICAGO, July 11 (AP-USA)—Potatoes: Arrivals 192; on track 351; total U. S. shipments 1315; supplies moderate; demand fairly good for best, very slow for others; market about steady; California long whites \$4.55-4.65; Kansas Red Warbus \$3.75; Oregon Bliss Triumph \$4.55 (all U. S. No. 1 washed); Arizona Bliss Triumph U. S. No. 2 washed \$3.25.

### Wheat Futures Leap Ahead

CHICAGO, July 11 (AP)—Wheat futures leaped the 10-cent a bushel limit today and July corn climbed to another new all-time high in heavy buying influenced by reports that the government had raised its price for Southwestern wheat for export.

Wheat at Kansas City and Minneapolis also advanced the daily limit at times. There were reactions from the best levels in all three futures markets.

September, December and May wheat, and all corn deliveries advanced to new season highs. Oats also were strong.

**SAVE TIME on PEN REPAIRS!**

• A small adjustment may put your pen in perfect condition.  
• Bring it in today for expert, factory-trained servicing.  
• Genuine parts and authorized repair service on Parker, Sheaffer, Eversharp and all other makes.

**CAMEO SHOP**  
737 Main

Chicago wheat closed 7 1/2 to 9 1/2 cents higher than the previous finish. July \$2.30 1/2-2.40, corn was up 2 1/2 to 4 cents, July \$2.17 1/2-2, and oats were ahead 1 1/2 to 3 1/2 cents, July \$1.01 1/2-1.

**TO ATTEND CONVENTION**  
PORTLAND, July 11 (AP)—James A. Farley will attend the national Elks convention here next week.

Classified Ads Bring Results.

**BATES SHOES**

**SALE! OF WESTERN BOOTS**  
By Stewart

Men's, Women's Children's All Reduced  
Reg. 49.50 ..... now 44.55  
Reg. 42.50 ..... now 34.00  
10% Off Above 42.50

**20% OFF**  
All Stewart BOOTS  
Up to 42.50

Reg. 16.50 Children's BOOTS  
Now 10.95

Since 1918  
**Drew's**  
MANSTORE  
733 Main  
BOTANY TIES

**COAST-TO-COAST STORES**

**Week-End SPECIALS**  
SATURDAY and MONDAY

HOUSEWARES	HARDWARE
Ice-O-Mat Ice Crusher . . . 7.98	Lawn Sprinkler, 3 arm . . . 1.59
Sewing Cabinet . . . . . 2.10	Garbage Cans, 20-gal. . . . 2.98
Vegetable Bowls, large . . . . 45c	Needle Nose Pliers, 6" . . . . 1.39
Wall Type Can Opener . . . . 1.10	Expansive Bit, 3-4 to 1 3-4 . . . 2.25
Wax Off . . . . . 59c	Hand Grinder, clamp-on . . . . 2.98
Meat Loaf Pan . . . . . 10c	Scythe Stones . . . . . 10c up
	Hack Saw Frame . . . . . 65c
AUTOMOTIVE	ELECTRICAL GOODS
Floor Mats, Model A . . . . 2.29	Proctor Irons . . . . . 10.95
Socket Sets . . . . . 9.50 up	Hot Plate, 2-burner . . . . . 9.95
Tail and Stop Light, Universal 1.79	Extension Cords, 9 ft. . . . . 59c
Clearance Lights, 2-way . . . 45c	Broiler and Hot Plate . . . . 2.98
Reflectors, red or amber . . . 55c	Toaster, 2-slice . . . . . 2.98
Polishing Cloth . . . . . 19c up	Radio, 5-tube Catlin Model . 29.95
Simonize Cleaner or Wax . . . 59c	Yard Lights . . . . . 1.89
MISCELLANEOUS	FARM SUPPLIES
Wienie Forks . . . . . 2 for 15c	Water Bag, 2-gal. . . . . 1.35
Tackle and Tool Box . . . . 2.29	Tie Out Chains, 20 ft. . . . . 98c
House Paint, 5-gal. can per gal. 5.30	Clamp-on Vise, 3" jaws . . . . 3.89
Paint Thinner in bulk . . gal. 35c	Wheel Garden Cultivator . . . 6.49
Garden Faucet, 1/2-in. . . . 1.19	Curry Combs . . . . . 35c
Metal Bushel Basket . . . . 1.29	Thermometers . . . . . 35c up
Gillen Floor Furnace Reg #135 Now 119.95	Welder, 125 Amp . . . . . 95.00

Phone 6248  
Locally Owned

**COAST-TO-COAST STORES**  
Corner 11th and Main  
Nationally Organized

**Craig's**

**AMERICA'S GREATEST VALUES IN FINE BRAS!**

*Exquisite Form*  
BRASSIERES

**\$1.49**

Nationally famous bras that give your figure instant, youthful beauty. You can't buy finer bras at TWICE this thrilling low price!

No. 185 (above)  
Deep-cut style for smooth, firm support under low-neck summer dresses.  
In White, Tealrose, Black, and Blue Satin.  
A and B cups, sizes 32 to 36.  
**\$1.49**

No. 186 (above)  
Perfect with sports and daytime clothes. Slit-lined undercup means firm support from shoulder-strap top! In Black Satin.  
A cup, sizes 32 to 36. In Black, White, and Tealrose Satin.  
B cup, sizes 32 to 38.  
**\$1.49**

No. 187 (right)  
Artfully cut, figure-flattering bra with clever darts for firm, youthful uplift. In elegant White Satin.  
B cup, sizes 32 to 36.  
**\$1.49**

No. 188 (above)  
In White Rayon-Cotton Satin.  
A cup, sizes 32 to 36.  
**\$1.49**

**Craig's**  
615-17 Main St.