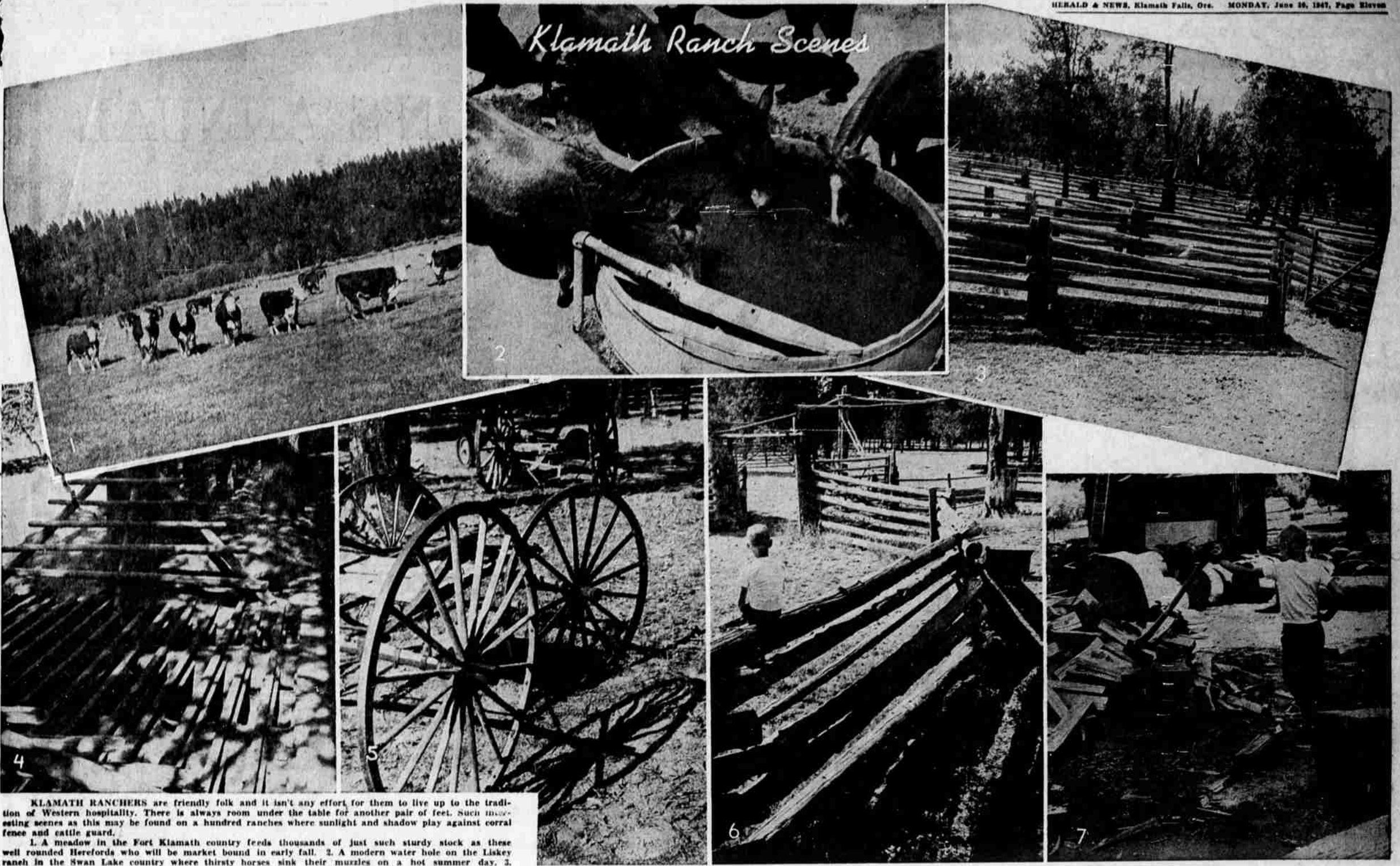


Klamath Ranch Scenes



KLAMATH RANCHERS are friendly folk and it isn't any effort for them to live up to the tradition of Western hospitality. There is always room under the table for another pair of feet. Such interesting scenes as this may be found on a hundred ranches where sunlight and shadow play against corral fence and cattle guard.

1. A meadow in the Fort Klamath country feeds thousands of just such sturdy stock as these well rounded Herefords who will be market bound in early fall. 2. A modern water hole on the Liskey ranch in the Swan Lake country where thirsty horses sink their muzzles on a hot summer day. 3. Corral rails pile up like jackstraws in this picture made on the Bar-Y ranch in the Yamsay country. 4. Another shot on the Bar-Y, this time at the cattle guard. 5. Wagon wheels from an old buckboard abandoned in the yard of the Yamsay ranch cast an interesting set of shadows in the late afternoon sun. 6. Young Paul Thomas suns himself on a lodgepole pine fence waiting for the cattle to walk through the open gate beyond. 7. What fella's wouldn't lean on the axe surveying the winter wood with cold weather so far away. Paul thinks this pile is pretty high for a little shaver. (All pictures by Wes Oederlan of The Herald and News but No. 2, loaned through the courtesy of Jimmy Floyd.)

DODGE "Job-Rated" TRUCKS

FIT THE JOB ... LAST LONGER

1 1/2 to 3 ton orders delivered promptly!

MEET OUR DODGE "Job-Rated" TRUCK SALESMEN



BILL CUNNINGHAM—Ex-marine and well known Klamath Falls musician. He can advise you on the proper truck for your job.



ONLY
DODGE
BUILDS
"Job-Rated"
TRUCKS



JERRY OLSON—Well known car and truck salesman of this city. One of Klamath's outstanding tennis champs. Jerry has a sincere interest in your truck problems.

From a range of 175 "JOB-RATED" chassis models, your Dodge salesman has the engineering data to select the **RIGHT** truck to fit your job, save you money. See him today . . .

- Tell him what loads you haul . . . ➔ He'll select the proper capacity truck!
- Tell him the type and size of body you want . . . ➔ He'll select the proper wheel-base for correct load distribution!
- Tell him your grade and speed requirements . . . ➔ He'll select the proper rear axle and gear ratio!

All other units such as engine, clutch, transmission, springs and brakes . . . will be "Job-Rated" for top performance with your loads over your roads. For maximum economy of operation—for long-lasting dependability—get the one truck that best fits your job . . . the right Dodge "Job-Rated" truck!

175 Basic "Job-Rated" chassis models to fit 97% of all hauling needs.

LOMBARD MOTORS

DODGE, PLYMOUTH, DODGE "Job-Rated" TRUCKS

322 So. 6th Phone 3136

Western Wardrobes at Wards Low Prices



MEN'S COWBOY BOOTS

Brown or black 10-inch soft leather boots with attractive embossing. Flexible Goodyear welt construction. Heavy leather soles. Sizes 6-11.

18⁵⁰

WOMEN'S BOOTS—Good selection—sizes 4 to 8.....14.95
MISSSES' & CHILDREN'S BOOTS—all wanted sizes.....7.98 up



Denim SADDLE PANTS

The style you want . . . and tailored of husky blue denim. They are sanforized, won't shrink over 1%. Waist sizes from 28 to 42 inches.
2.89
BOYS' WESTERNS 2.49



Traditional FUR FELTS

Typical Western hats, styled of fine fur felt that can really withstand wear and weather. Top quality workmanship gives a smart, lasting appearance.
7.50
OTHER FELTS 10.00



Western STYLE SHIRTS

Any Westerner would O. K. these smart shirts! They are quality constructed . . . preshrunk for lasting fit, and in either brown, grey or tan. From 14-17. All wool in a cool basket weave.
6.79