

The Klamath County Sheriff's Posse



The Klamath Sheriff's Posse, presenting a picture as western as their new plaid shirts, will ride in the Big Parade on the Fourth of July and take part in the grand entry at the arena during rodeo days. The Sheriff's Posse was organized in 1939 with some 65 members, the large majority stockmen and cowboys. Pat Ivory (extreme left) has been the captain since its inception. Sheriff Lloyd L. Low (next

right), is the sheriff of the county. The Posse has appeared at various celebrations throughout the state including the far famed festival in Portland. Officers include, Sheriff Lloyd L. Low, Captain Pat Ivory, 1st. Lt. Louis Serruys, 2nd Lt. Mel Henry, Sgt. Bill Peck, Secretary Keith Moon and Treasurer Charlie Read.

The membership includes the following in addition to the officers:

Dale Mattoon, Clarence Adams, Leigh Ackerman, Early Arant, Elmer Balsiger, Chet Barton, O. L. Brown, Basil Brown, Ivan Cain, Ray Chase, Ole Chase, A. M. Collier, Marshall Cornett, Glenn Dehlinger, Vic Douglas, Charles Drew Jr., Guy Barton, N. B. Drew, Dr. J. M. Hil-

CREDITS
This special section was edited by Lois Stewart and Malcolm Epley. Photography originated specifically for the section was by Wesley Guderian. All art layouts and photo-engravings were by Ernest Hedlund. Press work was by Gene Denton. Typographical design was by Herb Hemmingsen. Special appreciation is extended to Gilbert Fleet, for the cover picture; to Jimmy Floyd, for the loan of a number of excellent negatives; for DeVere Helrich for the action shots; and to members of the Klamath Basin Rodeo association, to operators of Klamath cattle ranches, and to advertisers who participated commercially. Because of space limitations, it was impossible to picture any of a score of ranches of equal interest in the Klamath area, and the editors hope to cover these in future pictorial efforts of this nature.

ton, Dr. J. C. Hunt, Dan Liskey, Dave Liskey, V. J. Goodwin, Cecil Matt, E. H. Larsen, E. R. Long, Dean Hall, Clay Howard, Cliff Macy, C. H. Foster, Brady Narey, J. H. Robbins, Ray L. Roberts, Lloyd W. Rusk, Thomas C. Parker, Earl McNeely, Howard Curry, Dorman Schaeffer, Marius Peterson, William A. Serruys, Carl Steinseifer, H. A. Stillwell, J. M. Cronin, Harry Wagoner, H. E. Wise, George W.

Walker, Les Wright, R. C. Woodruff, E. L. Paddock, Jack Harrison, R. R. Walker, Bob Burleigh, Louis Stewart, Vic Shuck, E. C. Stukel, Cecil Haley, Jerry McCarrie, Stewart Nicholson, Jerry Sisemore, Ward Hutton, Joe R. Steele, W. Lamar

Townsend, E. M. Raymond, Dos Noggle, Arthur Noggle, Arthur Rickbell, George Godard, Robert Dehlinger, Sol Wirth, Walter C. Gibson, Earl E. Reinhart, Charles Raymond Jump, Darrel C. King, Dick Reeder, Wesley Sharples, Louis

Dr. J. T. Riker, Ed Williams, Harry Hafter, N. K. Hill, Albert Trump, Lloyd, Louis A. Meyer, Glenn Tubach, Keith Rice, Henry Ring, Cletus McMahon, R. O. Lilly, U. S. Balentine. (Picture by Wesley Guderian, The Herald and News).

Back to Pre-war Hours! Your Friendly DORRIS Clubs

★
Package
Goods
to Take Out
★

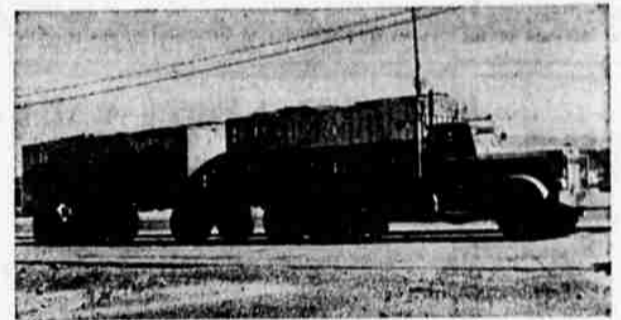
Now
Open
Daily
Until
2 a.m.

★
Popular Brands
of Liquors Sold
at All Hours
★

- ★ Star Inn
- ★ Tavern Cafe
- ★ The 40 Club
- ★ The Homestead

Dorris, California

J. D. BECKLEY LIVESTOCK TRANSPORTATION



One of Six Trucks Operating in Oregon and California

KLAMATH FALLS
J. D. BECKLEY
Phone 7334

RED BLUFF
BOB MAYBERRY
Phone 702A

GO WESTERN

To the

RODEO

- ★ **PENDLETON**
Shirts - Autorobes
- ★ **Western Shirts**
Flowered or Plain
\$5.00 to \$27.50
- ★ **Western 2-pc. Suits**
Gabardine or Elastiques
\$39.45 to \$45.00
- ★ **Western Pants**
Tan - Beige - Brown - Grey
- ★ **Western Hats**
\$10.00 to \$25.00

Hibbs
Clothing Co.

MAIN AT SIXTH

