

# Tule Growers Review Year

**TULELAKE**—A meeting of the members of the Tulelake Growers association was called by its board of directors to review activities of the association since its annual meeting last December and to consider plans and activities of the association during the rest of this year. 75 members, officials and guests were present. The meeting was held in the American Legion hall, Tulelake, at 8:00 p. m., June 16.

President C. J. Main presided and gave a report on activities of the association during the past six months. Mr. Main emphasized the importance of the accomplishments which the association has been able to achieve and which are of value to agriculture in this area.

## Farm Experiment

He pointed out that the local farm experiment plot is now in operation on Bureau of Reclamation land across the highway from Tulelake and represents a beginning of a worth-while project that should bring important results and expanded work in the future should result. The association has been able to obtain information to growers.

The association has cooperated with the University of California, the state department of agriculture, and the agriculture extension service in initiating studies and work in the control of insects to reduce virus diseases in potatoes. Dr. D. D. Jensen, University entomologist, is making a survey of aphids to determine effective control methods. This work will continue with larger areas and increased personnel.

The association cooperated with state department of agriculture officials in bringing to the attention of the state legislature the need for a permanent fund to insure continuity and adequate financing for state operated seed potato test plots at San Mateo and Oceanide, California. Through leadership of State Senator Harold Powers, an appropriation of \$25,000.00 has been made for the revolving fund. Negotiations have been completed for the use of a suitable track of land at Oceanide for seed potato test plots to carry on the long range program in this field.

## Problems in Obtaining Refrigerator Cars, Grain Cars, Commercial Fertilizer, Improved Services from Government in the Operation of the Potato Price Support Program have Required Effort and have Met with Some Success.

**Labor Center**

Tulelake Growers association has equipped and operated a labor supply center at Camp Newell during the past year, and is doing so again this year. Plans have been made and work is being done to operate a permanent housing center for farm laborers for the Tulelake area of the basin. To attract the more desirable farm workers to work here during the needed periods, requires adequate housing, equipment, utilities and camp management. A full time camp manager has been employed, effective July 1 of this year. Mr. Joe Rittig, presently employed by the war food administration in Oregon, and who has had several years experience in charge of farm labor camps, including Mexican national camps in the Klamath basin during the war, will be the association's labor camp manager on a year-round basis. This action is justified by the extent of general repair and preparation of buildings and equipment, in addition to operation, maintenance, and management.

## To Get Warehouses

The association has been notified by Bureau of Reclamation officials that it is the intention of that agency to award the five large warehouses located at Camp Newell, and upon Southern Pacific company's land, to this growers association. The extent of general repair and preparation of buildings and equipment, in addition to operation, maintenance, and management.

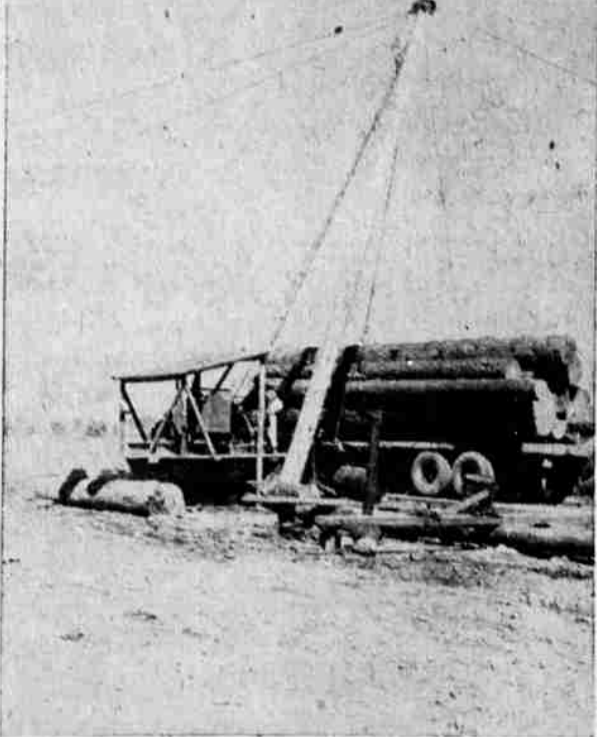
## Spud Department

Some consideration was given to the advantages of effectuating a potato marketing agreement. No action was taken on this matter, but further study will be made as to the expediency of entering into such program for this reason.

It was thought that it is too early to make specific recommendations relative to harvest wages. Too many variables might enter into wage scales that may be proposed at this time.

A number of new Tulelake homesteaders attend the meeting. A spokesman for this group, Mr. Paul Rogers, informed the meeting of the extreme need for roads in the new homestead area, and solicited support of the Growers association in obtaining congressional action for funds to build and maintain the needed roads. Growers voted un-

## Heavy Machinery Hoists Heavy Logs



These huge pine and fir logs, some several feet in diameter, have been estimated by an expert scaler as to the number of board feet in each and are ready to be hoisted from the 24-wheel lumber truck by a tremendous power-driven crane and dropped into the water of Upper Klamath lake. Only a few short hours before they stood in lofty majesty in the Rogue River national forest.

## Lampman Day Honors Editor

**GOLD HILL, June 21 (AP)**—State and prominent public officials flocked into this small Southern Oregon town today to honor Ben Hur Lampman, associate editor of the Oregonian and publisher from 1912 to 1916 of the weekly Gold Hill News.

It was here that Lampman wrote the first of the editorials and fishing articles that were to carry him to national fame.

Mayor Ralph E. Bell officially proclaimed it Ben Hur Lampman day. On the schedule were a salmon bake, potato races, sack races, a country dance and a tobacco-spell-time contest.

Invited were Governor Speltz; Palmer Hoyt, ex-publisher of the Oregonian and present publisher of the Denver Post; ex-Govs. Oswald West and Ben W. Olcott; Authors Stewart Holbrook, Ernest Haycox and Robert Ormond Case; and others in public life.

The Gold Hill band the Medford sheriff's posse and a delegation from the Oregon Cavemen of Grants Pass also were to be on hand.

## Oregon Realtors Back Sales Tax

**PORTLAND, June 21 (AP)**—A campaign by the Oregon Association of Real Estate Boards in support of the proposed 3 per cent state sales tax was under way today.

Fourteen real estate boards from over the state had delegates here yesterday for the kick-off meeting in which Rep. Earl Hill of Lane county, campaign manager, urged them to "go home and organize" for the October 7 election on the tax.

## Carson Urges More Shipping

**PORTLAND, Ore., June 21 (AP)**—Despite the huge numbers of war-built ships, the U. S. must add another 3,500,000 tons of shipping to maintain its place in foreign commerce, Joseph K. Carson, Portland, member of the maritime commission, said yesterday.

He told delegates to the Pacific coast board of inter-governmental relations that the ships—many of them for specific purposes—were important for national defense.

Delegates also heard that industrial unemployment on the coast was double that of the rest of the nation. Fay Hunter, regional director of the employment service, said 10 per cent of the Washington labor force in Oregon, including West and California was out of a job.

Mrs. Mary Hutchinson, regional representative of the bureau of employment security, said, however, that the Pacific Northwest was faring better than California in employment.

Both speakers added that food processing and construction had not developed the jobs they had expected.

## Rose Festival Queen To Wed

**PORTLAND, June 21 (AP)**—The queen of this year's Rose Festival, Georgene Ormston, 18, will be married here July 20 to Raymond Peterson, navy veteran whom she has known since grade school days.

Miss Ormston said both plan to attend the University of Oregon next fall.

## Student's Young Son Drowns

**EUGENE, June 21 (AP)**—James O. Goodwin Jr., 2, drowned in the Willamette river here yesterday. He apparently had wandered to the river from his nearby home. The father is a University of Oregon law school student.

## Observation Shows Blank Spots In Star Pattern

By J. HUGH PRUITT  
Astronomer, Extension Division, Oregon Higher Education System

A clear, moonless sky, viewed from a highland vantage ground far away from the interference of city illumination, gives one the general impression that the firmament above is everywhere crowded with stars. A careful inspection, however, of certain regions will reveal dark rifts and almost starless spots interwoven here and there among the radiant hosts.

Late in the evening at this time of year, the Milky Way stretches its faint, white band of altitudes of very distant stars entirely across the summer sky. But it is not a continuous ribbon of delicate light, for there are many irregularities in its great span. Beginning near Deneb, at the head of the Northern Cross, there is a pronounced division which continues to the Scorpion deep in the south where its darkness is accentuated by the surrounding richness of the Milky Way, a richness which the late Professor Barnard described as "stars piled up in cumulus masses like summer clouds."

Continuously below the southern horizon as seen from our latitude, there is a dark spot beside the famous Southern Cross known as the Coal Sack. This region is as wide as 10 full moons and as long as 16.

Within its boundaries only one naked-eye star can be seen, and that a very faint one. It is said that this dark spot was first noticed by Pinzon in 1499. When the astronomer Herschel saw it, he exclaimed, "Here is truly a hole in heaven!" Isabel Lewis of the Naval Observatory says it "appears like an abyss of inky blackness" against the bright background of the star clouds of the Milky Way.

There are many lesser almost-starless regions in the heavens, including one near the Northern Cross. A small one in Ophiuchus is shaped like a distinct letter S. There are others in Orion, one being known as the Horse Head nebula.

At one time it was thought that these regions were actually openings among the stars through which earth dwellers could see out into the infinitudes of space beyond. Poetical as is this idea, present day studies reveal that the dusky places are vast clouds of obscuring matter.

**TRUCKS AND PICKUPS FOR RENT**  
You Drive—Long, Short Trips  
Move Yourself—Save 1/3  
**STILES' BEACON SERVICE**  
Phone 8304 1201 East Main

**RUG CLEANING**  
UPHOLSTERED FURNITURE  
Conveniently Cleaned in Your Home  
Latest Equipment and Methods  
**RHOADS CLEANING SERVICE**  
Serving the Basin Area Since 1924  
Telephone 6011 Fully Insured

dark nebulae—composed of gas and dust, which hide the stars that are behind them. The distances of most of these clouds are only a few hundred light-years from our solar system so that the Milky Way beyond where they appear is entirely obscured. Any stars that appear in these regions are nearer to us than the dark nebulae.

Barnard's studies of dark nebulae showed that many of them actually were faintly luminous. Photographs made at the Harvard astronomical station in the highlands of Peru revealed that all had some degree of luminosity. Without such dark clouds the Milky Way would doubtless be as interesting, but would it be as more uniform?

Citrus fruit farmers in California keep their orchards weed-free by spraying diesel oil on weeds before they get more than four inches high.

**SOMCO**  
Now Available For Immediate Delivery—

- Windows
- Screens
- Moulding
- Trim
- Store Fixture
- Cabinets
- Doors
- Frames
- Hardware
- Garage Doors

**Southern Oregon Manufacturing Co.**  
111 Payne Ph. 7581

## Missing Cameraman Still Mystery After 37 Years

The Herald and News office had a visitor yesterday who asked a question some of the city's old-timers might be able to answer. He was Norris Goode, editor of two small-town weeklies in south central Illinois, who was briefly a resident of Klamath Falls back in 1911.

During a six months stay here, Goode worked on The News, and it was because of his newspaper work that he came in contact with a photographer sometime during the winter of 1910-11. His acquaintance with the man, whose name he has forgotten, was short lived, for one cold winter day the photographer set out on snowshoes from the edge of town toward Crater lake, never to return.

It was the man's intention to take pictures of Crater lake in all the beauty of winter. The trip was dangerous, but the man liked to take good pictures, so he set out with a pack of blankets and grub and two cameras.

Goode saw him off at the edge of town. He was, quite possibly, the last man ever to see him, for the cold and the snow and the emptiness swallowed him up. Weeks later a search party stumbled onto one of the man's cameras and some of his photographic plates, but there was no trace of the man.

Months later, in June to be exact, Goode had to leave for the east due to the illness of his mother. He left before the snows had thawed sufficiently to adopt a resolution requesting federal funds for this road work construction and improvement.

The Tulelake Growers association is committed to an extensive service program for assisting individual growers where organized effort is required, and to cooperate with other community agencies and organizations to develop and promote the general welfare of the people in the Tulelake area of the Klamath basin. Opportunities for a wide range of services exists. With a strong membership, sufficient finances, and sound leadership this growers organization faces the challenge to assist in solving some of the common problems that are now, and will, continue to be a part of the farmers' difficulties.

cently around Crater lake to permit a thorough search of the area. He, too, virtually disappeared. This visit 36 years later is the first since then.

So today he was back, and he wanted to know what happened to the man he saw off on a long journey out of sheer curiosity—he had never before seen a man walk on snowshoes and he wanted to see how they worked.

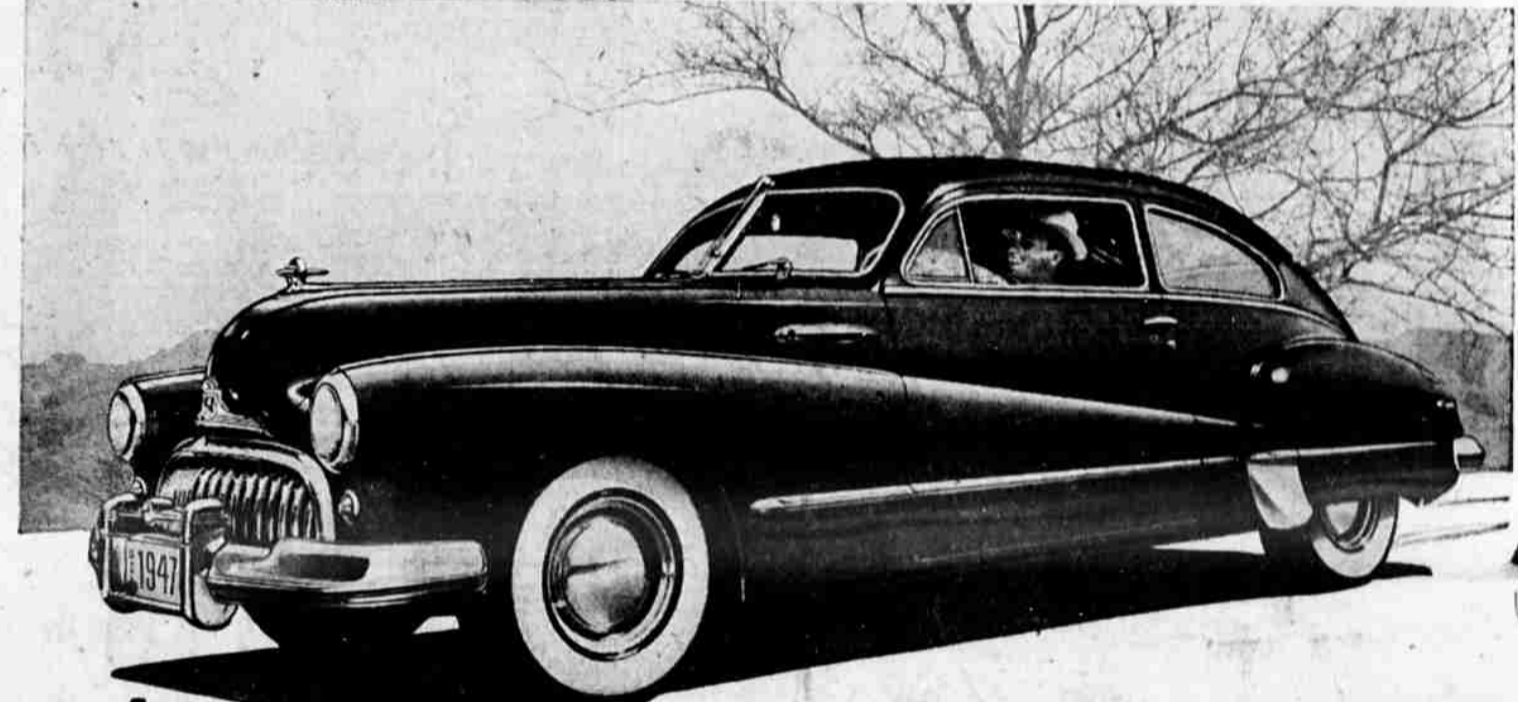
We couldn't help him out. If any of you can, write him in care of the Virden Recorder, Virden, Illinois.

## Methodist Minister Dies

**PORTLAND, June 21 (AP)**—Oregon Methodists, saddened by the death of Bishop Bruce R. Baxter, went into closing sessions of the annual state conference here today.

Named as delegates to the Methodist general conference at Boston next year were Dr. Roy Fedge, superintendent of the Salem district, and the Rev. Owen J. Beadles, Portland. Lay delegates will be Mrs. Clarence Meeker, Medford, and Ernest Peterson, Portland.

Ministerial delegates for the jurisdictional conference of the western states will be the Rev. Laurence E. Nye, Portland, the Rev. Ralph Kleen, head of the new life movement of the Oregon conference. Lay delegates will be Dr. Edward L. Clark, president of Multnomah college, Portland; William R. Thomas, Lebanon, and Judge Walter C. Winslow, Salem.



**"Built in the shape of cars to come"**

IT struck us as a happy phrase the first time we used it in our advertising.

Certainly, no other eight words quite so neatly express how this trim and tidy Buick underlines the coming thing in automobile styling.

Now come those who say we don't do justice to a great car and a great buy when we stress outward looks alone.

"How about what this car can do?" they want to know. "Maybe style makes folks want a Buick, but it's performance that makes 'em mighty glad they insisted on getting one."

Lift the bonnet for a good look—and you quickly see why.

There's a big straight-eight power plant that fills the hood practically to overflowing.

Put a micrometer on it, and you'll find that in a whole handful of its dimensions it is made to closer tolerances than even an airplane power plant.

It's a valve-in-head engine, which means it's more efficient in basic design—and it makes the most of that with Fireball combustion that squeezes the most good out of each tiny fuel charge.

Finally, it's topped off with Buick's special Accurite cylinder finish, a Buick exclusive that makes this honey ready to ramble the minute you get it—and keeps it young, lively and eager over thousands on thousands of active miles.

Fireball power alone is enough to make this America's most wanted automobile—yet here in Buick are style, and size, and room, and the matchless gentleness of an all-coil springing ride.

For your money—why not get them all? Placing your order now makes certain that you will—and you'll find the same friendly, courteous help in getting a Buick soon-as-possible whether or not you have a car to trade.

When better automobiles are built

**BUICK** will build them

ONLY BUICK HAS ALL THESE STAR FEATURES

- \* AIRFOIL FENDERS
- \* FIREBALL POWER
- \* ACCURITE CYLINDER BORING — smoothness from the start and an engine that "stays young."
- \* FLITWEIGHT PISTONS — for flash-ing-action, swift response, reduced load on bearings.
- \* PERMI-FIRM STEERING
- \* BROADRIM WHEELS
- \* STEPON PARKING BRAKE
- \* DEEPLIX SEAT CUSHIONS
- \* CURL-AROUND BUMPERS
- \* SILENT ZONE BODY MOUNTINGS
- \* FULL-LENGTH TORQUE-TUBE DRIVE
- \* NINE SMART MODELS — in three series, featuring Body by Fisher.

**H. E. HAUGER**  
1330 Main "24 Years Your Buick Dealer" Phone 5151

**Radio Sale**  
10% 15% 20% REDUCTIONS  
TABLE MODELS — PORTABLES  
COMBINATION RADIO PHONO MODELS  
**Pelican RADIO Store**  
119 So. 5th Dial 6232

**HOME GARAGE**  
216 Old Fort Rd. Phone 7034  
Bring your car where all work is guaranteed.  
We specialize in  
Motor Rebuilding and Tune-ups  
Valve Grinding - Reboring Brake Work  
Generator and Starter Rebuilding  
Stream Cleaning — Auto Painting

**IMPLEMENT PETE**

THE DOCTOR WHO PRESCRIBES FISHING TRIPS IS MORE POPULAR THAN THE ONE WHO ADVISES RUG BEATING

**RADIOS**  
Table, Cabinet Models, Combination radio-phonographs.  
20% Discount  
**J.W. KERN'S**  
Farm Equipment  
Klamath Falls, Ore.

**DR. E. M. MARSHA**  
SUCCESSFULLY TREATED  
NO PAIN NO HOSPITALIZATION  
No Loss of Time  
Permanent Results  
Chiropractic Physician  
220 No. 7th — Square Theatre Bldg  
Phone 7966

An entertaining day is in store for those people attending the Klamath Regatta.  
PHONE  
**O. E. "Tommy" THOMPSON**  
108 S. 8th St. Phone 5401  
Aetna Life Insurance Co.  
Hartford, Conn.