

Whitehaired Women Launch Determined WCTU Program

PASADENA, Calif., May 1 (AP)—The WCTU, personified by 33 white-haired women tramping from bar to bar in the hot sun, is on the march again.

They get attention and, with few exceptions, they get respect. That they win no apparent converts di-

minishes not at all the zealous, crusading light in their eyes.

Launching a campaign they hope will become nationwide, they promise no Carrie Nation tactics. Their leader, 87-year-old Mrs. Jessie Lee Cowie, voiced their theme: "No threats, no violence."

"We are on a peaceful errand," she said. "We appeal to your better natures."

While she quoted scripture from memory, others of her band—all in their sixties or older—bent over women on bar stools and seated at tables.

Some of the men went right on talking. "Darned busybodies," one muttered.

"I plead..." Mrs. Cowie began. "Hey, bartender," a youth shouted, "Gimme a beer."

A woman with a sign "Bible or bottle?" broke into tears. A woman

at a table—a bourbon and soda before her—dabbed at her eyes.

"So much has transpired in layers," said Mrs. Cowie.

"The Black Dahlia..."

A waiter pulled the plug on a juke box.

The crusaders broke into "Onward, Christian Soldiers." The woman at the table and her girl friend sang as loudly as anyone. And they knew the words.

Mrs. Cowie and her followers marched out.

A fellow at the bar said, "Now I really need a drink."

Fishermen To Vote On Strike

ASTORIA, Ore., May 1 (AP)—Fishermen and cannery workers of the Columbia River Fishermen's Protective union will take a strike vote as the result of a breakdown in negotiations with packers, Henry Niemela, union secretary, reported today.

The union official said conferences between the union and employers halted yesterday after all-day sessions.

Niemela said the union originally had asked a 25 cent an hour boost and more pay for graveyard and swing shift workers but that the packers' offer was little better than an average boost of 10 cents an hour.

Spokesmen for the packers were not immediately available for comment.

Newport, Ore., fish plants are also involved in the negotiations here.

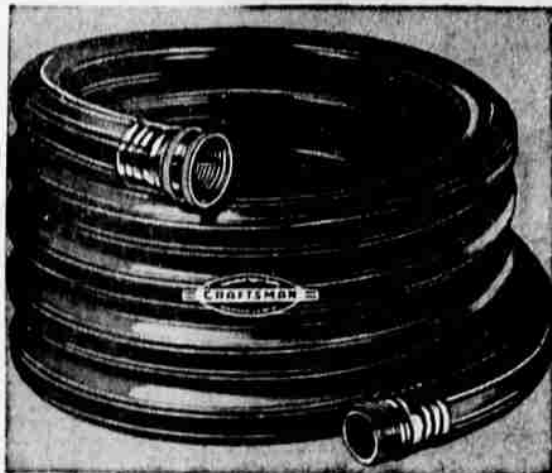
HERALD & NEWS, Klamath Falls, Ore. THURSDAY, May 1, 1947, Page Three

Non-veterans 17 to 40 years of age may now be fully enlisted in the inactive naval reserve at the

PILES
SUCCESSFULLY TREATED
NO PAIN NO HOSPITALIZATION
No Loss of Time
Permanent Results!
DR. E. M. MARSHA
Chiropractic Physician
378 No. 7th - Esquire Theatre Bldg.
Phone 1886

REGISTRATION
STOUT Aluminum
IRRIGATION SYSTEMS
Sold Locally by
J. W. KERNS
734 So. 8th Ph. 4197

SEARS MAY ECONOMY FESTIVAL



Craftsman Garden Hose
Guaranteed 10 Years

25 ft., 5/8" diam. **4¹⁹**

25 ft., 3/4" **4⁹⁵**

Three strong layers (seamless rubber tube, rayon reinforcement, super tough Neoprene cover) vulcanized into one flexible, non-kink hose, extra resistant to abrasion, sun and weather check. Brass couplings, rubber washers.



Craftsman Quality
Long Handles **2.29**

Our finest grass shears. Sensational new development. Cuts grass without slipping. Just push down on handle to operate. 34" length.



Craftsman Nozzle
Solid Brass **89c**

Easily adjusted from heavy stream to fine spray to shut-off with one hand. Will not rust. Durable, non-leaking construction.



3-Arm Sprinkler
Solid Brass Head **1.79**

Craftsman. Swiftly turning arms spray up to 35 ft. in diam. Head and arms of solid, non-rusting brass. Heavy steel base, won't tip over.



Craftsman Quality
"D" Handle Shovel **1.98**

One-piece high carbon steel round point blade, back strap electrically welded to 9x12" blade. 27" handle. Steel-encased "D" grip.



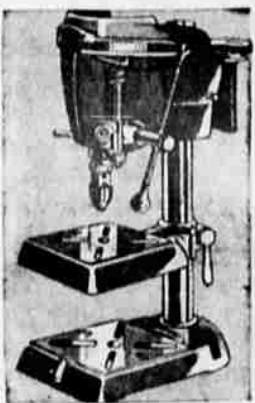
Craftsman Quality
Lawn Rake **1.29**

Tempered steel tines. Sweep lawn free of grass clippings or leaves. Rust-resisting enameled head. 22 toothy 18-in. spread. 4-ft. handle.



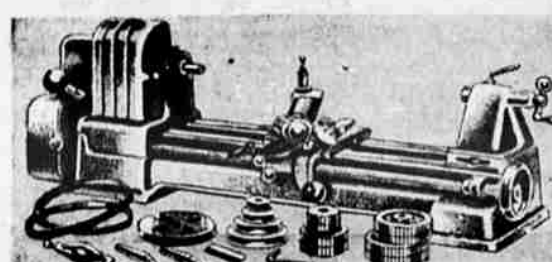
Cultivator
Five Steel Tines **1.69**

None finer! Five diamond-point steel tines, adjustable, removable. Steel head, ferrule. 4 1/2-ft. wood handle, sanded, waxed, polished.



Craftsman "400"
Drill Press
With Motor **74⁹⁵**

Brand new design and styling. "Flooding Drive" spindle assembly assures accurate operation at speeds. With motor pulley, belt, 1/2" cap. Jacobs' New Hex Key chuck, 4 sets of precision ball bearings. For wood or metal. Tilting table.



Metal Cutting Lathe **71⁹⁵**
6-inch... With Motor

Designed for turning armatures, model making and other metal turning jobs. Accurately machined Y-way bed. Range of eight speeds: 116-2040 R.P.M. Thread range: 8 to 96 per inch.



Polishing Head Kit
A Handy Set! **7.25**

Includes 3/4" Polishing Head; 3-pc. Buffing Set; 4" Rubber Polishing Wheel; 4x1 1/2" Grinding Wheel; and 3/4" Chuck, 1/2" x 20-thread.



Dunlap Hammer
1.35

One of the best low-priced hammers. Steel chromo-plated head; hardwood handle.



Lever Jaw Wrench
10-in. **1.95**

Plummet head in your workshop. Forged steel jaws, give 1000-lb. grip. 12-in. size.



Box End Wrenches
box of 5 **2.19**

Ideal for cars, factories, farms. Heavy steel frames. Average 12-pt. openings, 1/4-in. to 3/4-in.



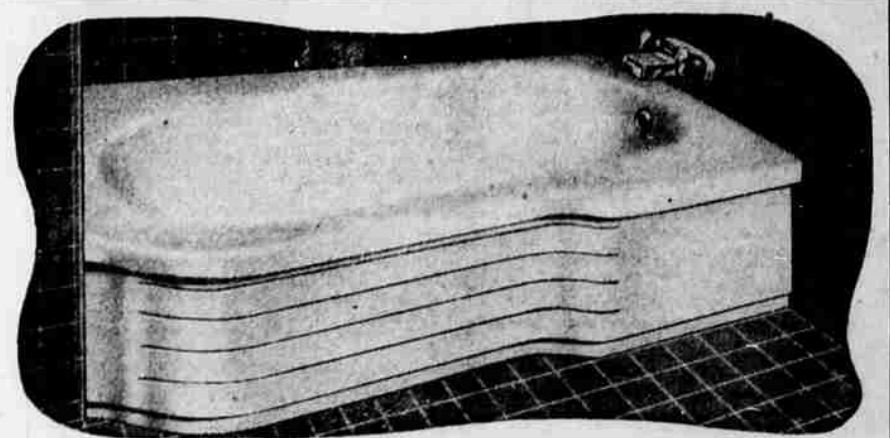
Craftsman Hand Drill
4.49

New! Streamlined aluminum hand drill. All gears enclosed. Extra drive stored in plastic handle.



Dunlap Steel Tape
79c

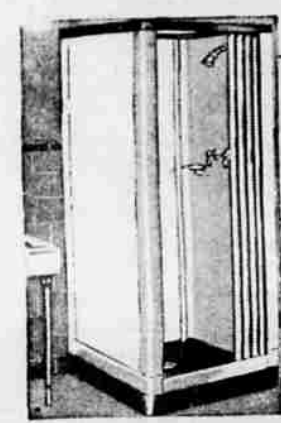
Flexible steel tape. 6 ft. long. Graduated in 16ths. Re-winds easily. In metal case.



Sears 'HOMART' Porcelain Enamelled STEEL BATH TUBS

- Lightweight, Yet Super-Strong
- Streamlined Curved Apron for Beauty
- Convenient Flat Shelf for Brushes
- Semi-Flat Bottom Prevents Slipping
- Safety Grab Rail at Top of Apron
- Recessed Base for Comfortable Toe Room

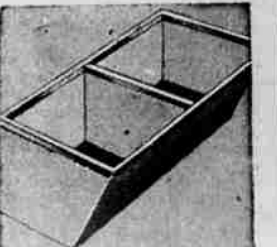
5.50 DOWN
Sears Easy Terms
Full Price 54.90



Homart All Steel Shower Cabinet

59⁹⁰

The latest improvement in cabinet showers. Easily assembled. Install it yourself. Always neat no matter how vigorously you shower, you can splash the bathroom floor. Steel sides and rear panels have white enamel finish. Fixtures included. 32x32x76".



Laundry Tub
Roomy Size... **16.95**

Made of heavy duty concrete with metal rims. Won't snag fabric. Plenty of room to soak, wash or rinse clothes. Leakproof.



Homart Pump
Fully Automatic **54.90**

Direct pressure water system for the small home. Requires no storage tank; automatic pressure switch turns on pump. 250 gals. per-hour cap.



White Glazed Sink
Stainproof **8.95**

Flat rim sink with deep coat of white vitreous glaze; acidproof, stainproof. 3 1/2-in. center outlet. For cabinet or frame. 20 x 18 x 7-in.



Steel Wall Cabinet
Two Shelves **19.95**

Good looking, roomy. Fingerprint door opening. Shelves adjustable.

13x12 1/4 in., 28 in. high, 12.98
30x12 1/4 in., 16 in. high, 17.95



Sero-Tone Finish
12 Soft Pastels gal. **3.15**

A magic wall finish that thins with water, covers most any surface, and dries in an hour! Easy to apply yourself. 12 lovely shades.



One Coat Semi-Gloss Master Mixed **1.20**

A durable, semi-lustrous gloss that reflects glassless light, leaves satiny eggshell finish. Noted for washability. All colors.



4-Hour Enamel
1 Coat Beautifies at **1.69**

Use inside or out. Dries fast to a like-like finish. Tough and durable, withstands acid, grease and hard wear. In many attractive colors.



Wears Longer
GALLON **5.19**

Top quality in house paint. Defies weather. In white and colors.



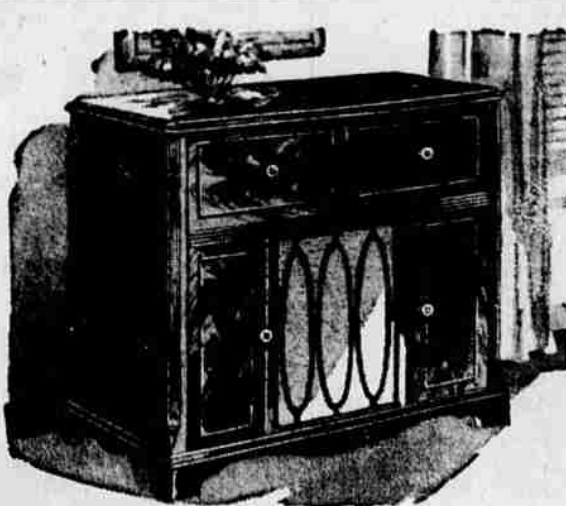
Ready Patch
59c

Ready to use for patching holes, cracks in plaster. Won't crack.



Floor Enamel
1.39 qt.

Tough, durable. Resists weather. Dries fast to a hard finish. Use inside or outside.



Deluxe Silvertone Combination Radio

LOW BOY MODEL 66⁶⁶ DOWN Sears Easy Terms
Full Price 199.50

A radio of outstanding performance. Smart 18th Century style. Deluxe in tone quality because of the "Silver Voice" 10-inch dynamic speaker. Personalized tone control Hi and Lo boost push buttons. Plays twelve 10-in. or ten 12-in. records. Long or short wave reception.

Other Combinations
From 93.95 to 178.50
Table Models or Consoles.

Peek in ON

'THE PRIVATE LIVES OF ETHEL and ALBERT'

THEY LIVE LIKE THE REST OF US

Only Funnier!

A chuckle a minute with this happily-scrappily married couple.

BROUGHT TO YOU BY
Sears Roebuck & Co.
Mon. Thru Fri., 11:45 a. m.
KFLW



Kenmore Oil Range

At Sears Low Price **2333 DOWN**
Full Price 69.95

Kerosene Cooker-Heater
Reg. 35.95 **19⁹⁵**

Sportsman's need for hunting and fishing. Furnishes heat as well as cooking.

Kerosene Stove
3-Burner Wickless **16.95**

★ **Your Klamath Theatre Guide** ★

ESQUIRE
Ann Savage in "Woman Chaser" also Western Hit Starts Sunday—Bing Crosby in "Blue Skies."

TOWER
Today—Richard Dix in "13th Hour" plus 60 min. of Shorts. Sunday—Bing Crosby in "Blue Skies."

PELICAN
Today—"Ginger." A story of a dog. Also "Decoy." Sunday—Edw. G. Robinson in "Red House."

PINE TREE
Today—Your Comic Favorite "Little Iodine" and Western. Sunday—June Haver in "Wake Up and Dream." Also Western.

RAINBOW
Today—"Freddie Steps Out." Also "Rio Grande Raiders." Sunday—"Blondie Knows Best" and Western Feature.

"Satisfaction guaranteed or your money back" **SEARS** STORE HOURS 9 TO 5:30
133 SO. 8TH PHONE 5188