

# Montgomery Ward

Ninth at Pine

Store Hours 9:00 a. m. to 5:30 p. m.

Phone 3188

**GIVE!**

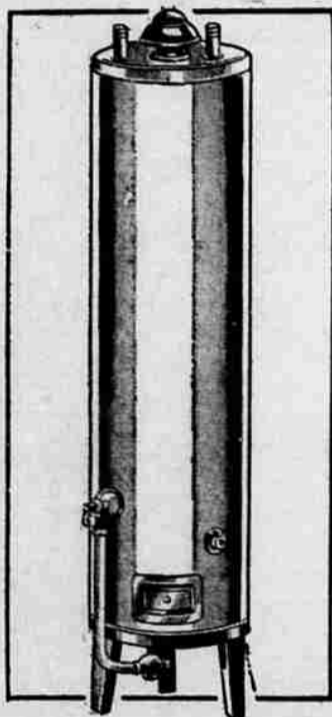
TO THE



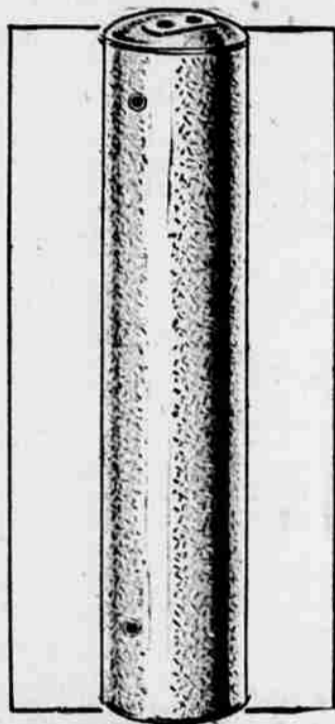
FARM EQUIPMENT,

HOME AND GARDEN SUPPLIES . . .

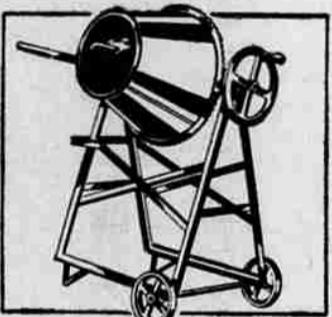
## You Always Save at Wards!



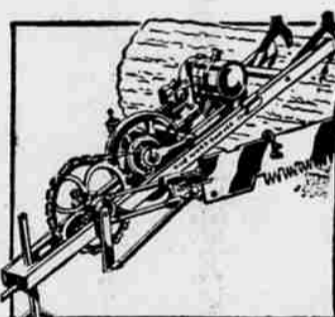
**GAS WATER HEATER**  
AUTOMATICALLY <sup>20-</sup> **54<sup>50</sup>**  
gives you a constant supply of hot water. Keeps water hot longer . . . because steel tank is thoroughly insulated.



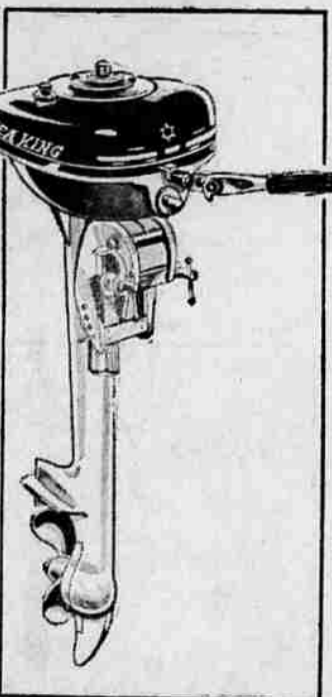
**WARDS RANGE BOILER**  
<sup>30-gal.</sup> **16<sup>75</sup>**  
High quality steel boiler is galvanized inside and out for rust-resistance! Has durable electro-welded seams! Buy at Wards . . . SAVE!



**MIX CEMENT OR FEED** <sup>3 cu. ft.</sup> **51<sup>45</sup>**  
Has 3 1-piece fins that mix thoroughly—and fast! Heavy 16-ga. steel hopper, rigid angle iron frame!



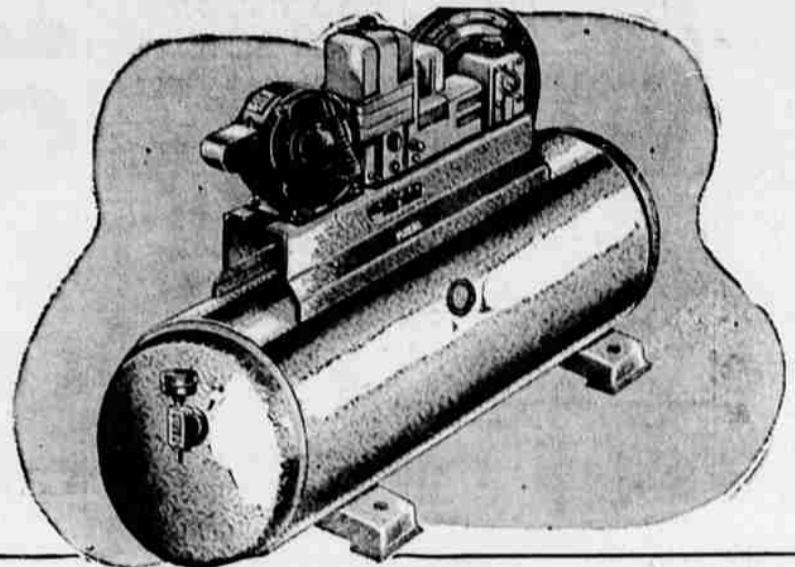
**POWERFUL DRAG SAW** <sup>4-h.p. gasoline engine.</sup> **209<sup>50</sup>**  
Cuts 5-ft. logs at nearly a <sup>less blade</sup> foot a minute! Can be carried by 2 men!



**3.0 H.P.\* "SEA KING" <sup>10%</sup> **86<sup>95</sup>****  
It's powerful—drives the <sup>down</sup> <sup>bal. monthly</sup> average dinghy up to 8 m.p.h.! It's easy to start—excellent for slow trolling.  
\*Certified OBC rating at 4000 r.p.m.!



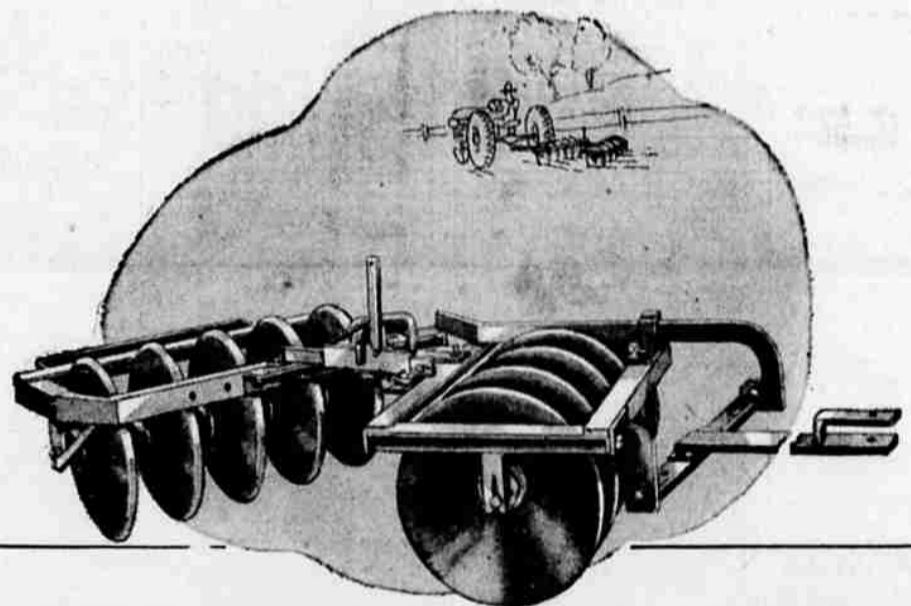
**LAWN MOWER** **21<sup>95</sup>**  
A popular streamlined model to help you do a better job of cutting grass. 16" blade is adjustable at both ends to insure an even cut.



**AUTOMATIC SHALLOW WELL WATER SYSTEM**

**94<sup>50</sup>**

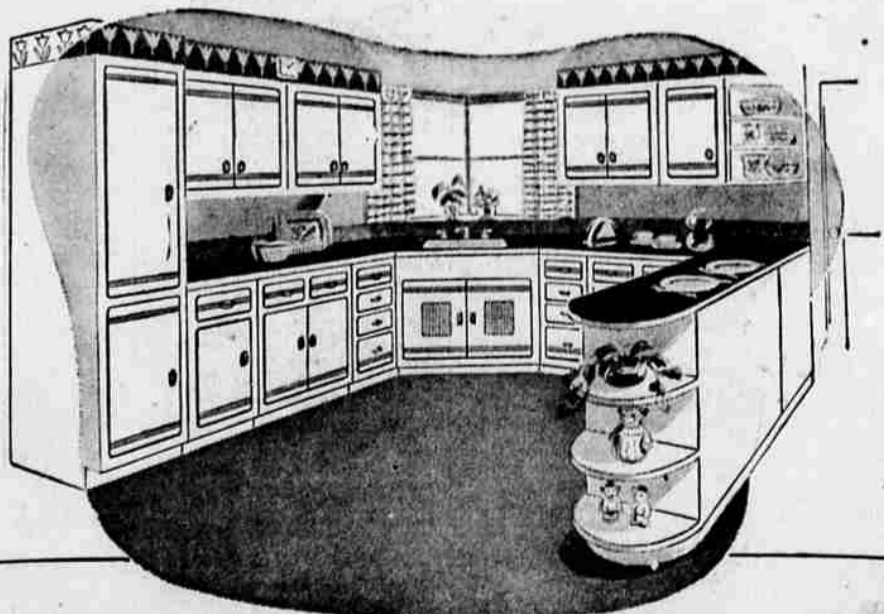
Wards heavy duty AUTOMATIC electric pump is built to give the average <sup>For wells up to 22-ft. deep</sup> farm family plenty of water—as much as 350 gallons per hour! Runs smoothly, quietly with Timken roller bearings and valve silencers. Economical—uses only 1/4-H.P. motor. See it!



**DISC HARROW WORKS YOUR CROPS BETTER IN 3 WAYS!**

**188<sup>00</sup>**

Yes, the Cook offset disc harrow is better for Western crops in 3 ways! <sup>3 ft., 9 in. wide, 22 in. blades</sup> First, it can be offset, right or left, to cultivate closer to vines, trees! Second, it rides low to clear branches! And, third, it's made in the West—for Western soils! See it at Wards NOW!



**MATCHED WOOD CABINETS FOR A MODERN KITCHEN**

**317**

Modernize your kitchen today . . . with Wards unpainted cabinets! All <sup>low in</sup> **each** cabinets are sanded smooth and ready to be painted. Choose one set or several depending upon the size of your kitchen. Upper cabinets are 13 in. deep, lower cabinets are 21 in. deep.