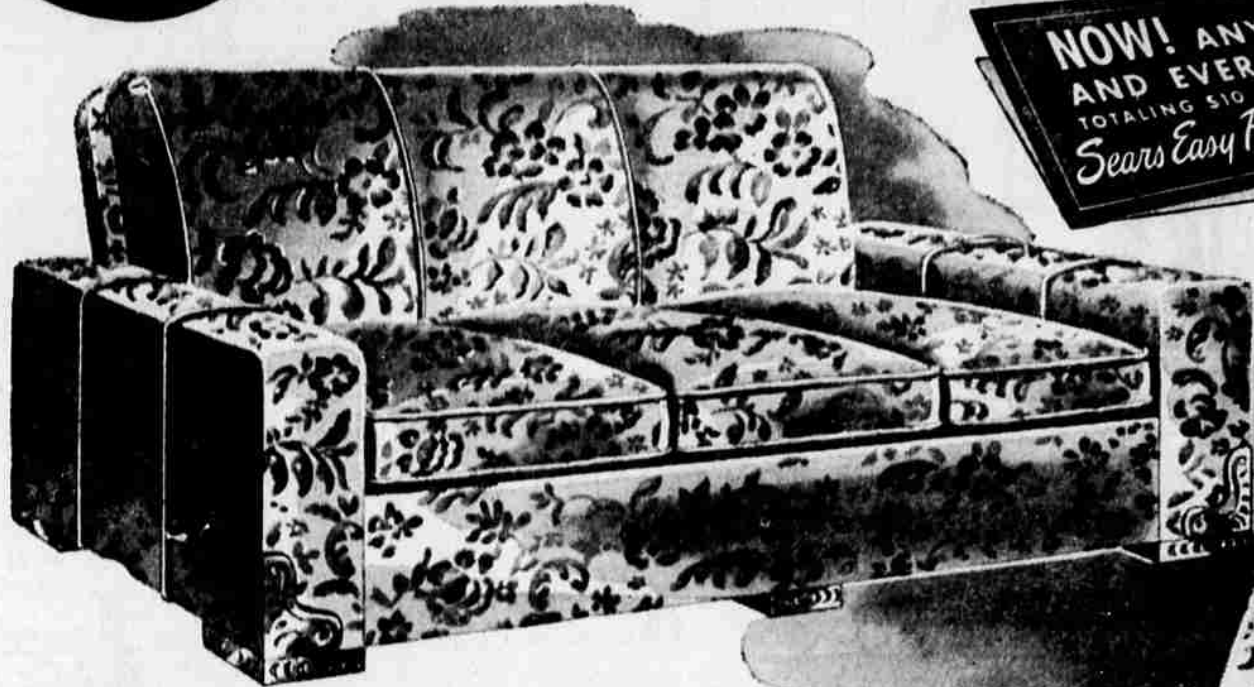


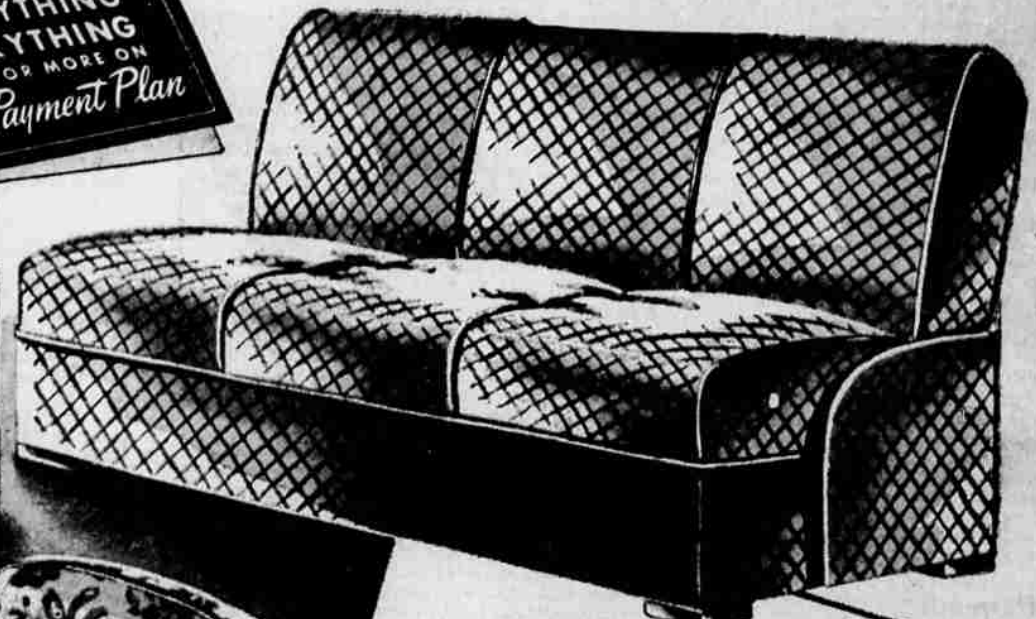


# UNLIMITED SPECIALS THAT PROVE AGAIN THE VALUES ARE AT SEARS!

(Our shipments of wool broadloom and linoleum are increasing. Let our Floor Covering Departments help with your needs.)



**NOW! ANYTHING AND EVERYTHING TOTALING \$10 OR MORE ON Sears Easy Payment Plan**

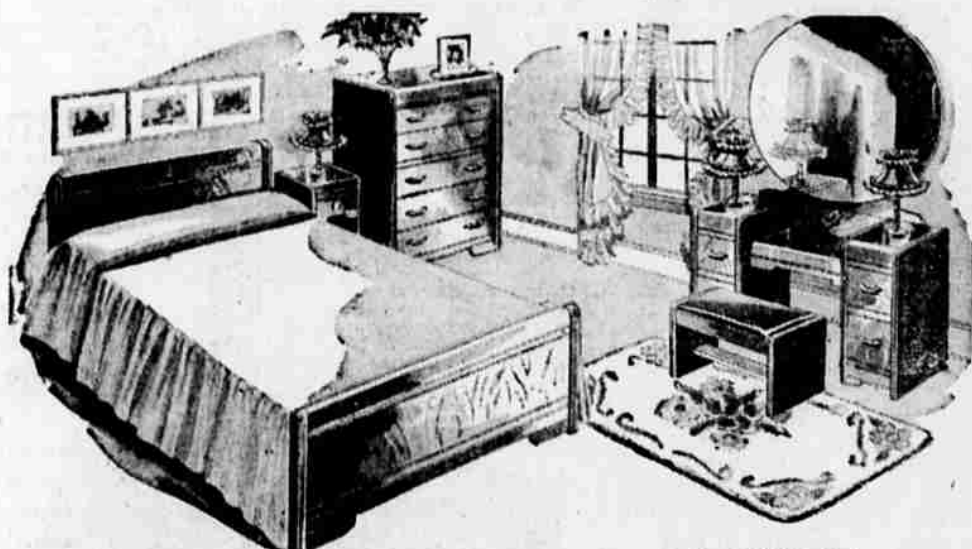


**DIVAN and CHAIR**  
Regular 174.95 **99.88**

Massive modern set made to rigid specifications. Full coil seat and back, sagless base. Extra heavy frame, supported at all points of strain. Has the luxury of carved panels and leg trim. Strong balanced hinges make it easy to convert to a double bed. Even the back is covered for a more finished look. Chair has button tufting in back. Your choice of many desirable fabrics in assorted colors. Large bedding compartment for storage. See this group at Sears tomorrow!

20.50 Down  
Sears Easy Terms

**89.95 VALUES ARMLESS DIVANS**  
14.00 Down, Sears Easy Terms **69.95**  
Handsome divan with full coil seat and back, heavy, sagless base. Converts to a double bed with ease. Large bedding compartment. Serviceable, attractive covers—plain patterns, florals, stripes, or small patterns.

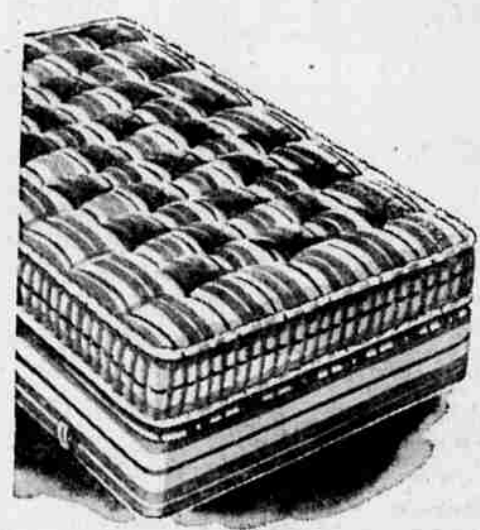


**5-PC. MODERN BEDROOM SUITE**

Complete with heavy mattress and box spring

Rounded waterfall bedroom suite with rich walnut veneers. Full size bed with 5-drawer vanity, 5-drawer chest, round or square plate glass mirror, night stand and bench.

ONLY **199.95**  
40.00 Down, Sears Easy Terms



**MATTRESS and BOX SPRING**

14.00 Down, Sears Easy Terms **69.95**

Innerspring mattress (180 coils) and box spring (63 coils) mounted on a heavy frame. Sisal and layer felted cotton filling. Woven ticking.



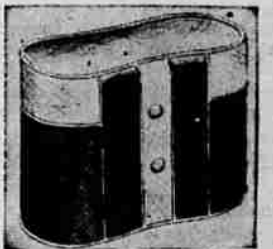
**Chair and Ottoman**  
Both Pieces **59.95**

Tilt back eases into your favorite position. Well padded steel coil springs. Strong, hardwood frame. Tasteful, durable fabrics.



**Cricket Chair**  
Hardwood Frame **9.95**

Colorful floral pattern cover. Seat, back plumply padded. Widespread legs prevent tipping. Exposed wood finished in ruddy maple.



**Utility Hassock**  
Kidney Style **13.95**

Comfortable hassock covered in durable artificial leather. Neat self-welting seams. Plumply padded. 23 3/4 x 13 1/2 in. 18 1/4" high. Brown and ivory.



**Restful Mattress**  
Innersprings **39.95**

Resilient innersprings, soft cushiony comfort assure you nights of refreshing sleep. Strong ACA ticking cover. Quality constructed.



**Ladder Back Chair**  
Slip Seat **10.95**

Walnut finished desk chair has a smart ladder back. Slip seat covered in creamy white leather-like fabric. One-piece back posts. Hardwood.



**Tubular Steel Chair**  
Chrome Plated **7.95**

Beautifully styled steel chair has comfort-curved back, long-wearing artificial leather on seat and back. Easy to keep clean.

**Heavy FELT BASE RUGS** **8.95**  
9x12-Ft. Size

**Sears Radio Show**  
See and hear Sears Radio Show (KFLW), broadcast from our store at 1:00 to 1:15 Fridays and 2:30 to 2:45 Saturdays. Featuring George Willis, Vocalist; Pete Colley, pianist, both Sears employees.



**Adjustable Carriage**  
2-Wheel Brake **39.95**

Lightweight carriage has heavy quilted sides . . . lined back and seat. Gray rubber tires. Adjustable hood and visor. Blue or gray.



**Soft Crib Mattress**  
With Innersprings **12.95**

Resilient coil springs, fluffily padded for ideal support. Smooth tuftless surface. Water-repellent pyroxylin coated cover. Has 4 vents. 28x52".



**Unfinished Chest**  
3-Drawer **4.98**

Modern, roomy, sturdily constructed chest. Smoothly sanded hardwood can be finished to match other room furnishings. Priced low.

"Satisfaction guaranteed or your money back"



**STORE HOURS 9 TO 5:30**  
133 So. 8th Phone 5188