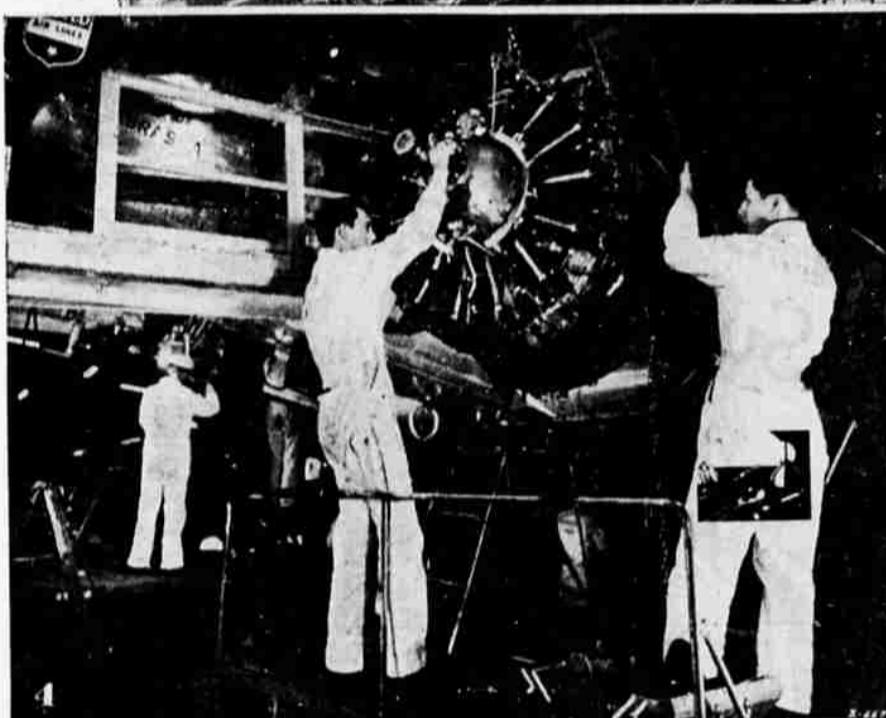


All Set For Inauguration Of United Airlines Mainline Service To Klamath Thursday



LUXURY LINER TO STOP AT KLAMATH FALLS—View of a United Air Lines Mainliner 180 (Douglas DC-3) twin-engine 21-passenger transport which will begin operating in and out of here on August 1.

MAINLINER LANDING—The above scene of air passengers deplaning from a United Mainliner will become a familiar sight at the Klamath Falls municipal airport when scheduled airline service makes its official bow here tomorrow.

FOOD SERVICE—Here a United stewardess is shown serving full-course meals which are complimentary to passengers while in flight. The stewardess unpacks them and prepares them for service.

ALMOST BEFORE THEY'RE COOL—No sooner has one of United Air Lines' big Mainliners been nosed into a "dock" at the company's chief overhaul base in Cheyenne, Wyo., than mechanics spring to various sections of the plane to begin removing parts which will be thoroughly overhauled in the shops. Here some of United's skilled workmen are shown removing one of a Mainliner 180's two Pratt and Whitney engines almost before it has had time to cool off.

APPETITES FLY, TOO!—One of the big jobs of United Air Lines is that of serving full-course meals, including hot dishes, to hungry passengers. The company maintains 10 flight kitchens across the nation. Here the chef is passing approval on individual trays which have been prepared for an incoming Mainliner.



Mainliner 180 To Be Used By United On KF Flights

United Air Lines will inaugurate service into Klamath Falls Thursday, August 1, with 21-passenger Mainliner 180's (Douglas DC-3), which are operated on the company's Pacific coast and coast-to-coast systems.

The Mainliner 180 (which signifies cruising speed), particularly well known for its advanced comfort features, has a cabin 27 feet, 8 inches long and 7 feet, 8 inches wide. The interior of the plane has wide seats with adjustable reclining backs and seats 21 passengers.

In the rear is a stewardess' pantry from which full-course meals are served in flight. Other features include steam heating and air conditioning, individual ventilators, ash trays, wide windows and lavatory. Cargo compartments are forward and aft of the cabin. At the front end of the fuselage is the pilots' compartment, equipped with virtually every known and proven aid to navigation and operation, including an automatic pilot which is used at cruising altitudes in maintaining flying elevation and course.

Other mechanical features of the Mainliner include wing flaps, which are lowered for landing to permit slower landing speeds, hydraulic retractable landing gear, hydraulic brakes and five radio sets. These latter consist of a short wave receiver

dashes; if to the other side, it changes into a series of dash-dots. Thus the pilots are informed at all times of their position on the course and are able to correct immediately for any deviation. Another important aid is two-way radio communication with ground stations located at intervals all along the airways.

A snake's teeth are pointed backward to prevent escape of animals captured for food.

All Mainliners of United Air Lines follow the directional radio beam on their trips from point to point along the Pacific coast and coast-to-coast routes. As long as pilots are on course, they hear the beam as a steady dash signal. If they were to one side of the course, this dash breaks up into a series of dot-

BOYS' and GIRLS' Chap Suits
5.95 up

Cowboy Boots
Full Size Range
14.85 up

Ball Bearing ROLLER SKATES
\$7.95 up

at
The GUN STORE
114 Main

WELCOME UNITED!

SEE KLAMATH FALLS AND SCENIC OREGON BY AIR!
SCENIC PASSENGER HOPS
IN OUR NEW STINSON VOYAGER
THURSDAY AFTERNOON—2:30
After the Air Show
Phone 6665

SHASTA CASCADE FLYING SERVICE
Aeronca & Stinson Dealers Municipal Airport

FIRST IMPRESSIONS STICK!

The latest in advanced equipment will do wonders in brightening your office and make a lasting impression on clients and visitors.

For Office Equipment See

Shaw
STATIONERY CO.
729 Main Phone 5602

WELCOME UNITED AIRLINES!

YOUR SERVICE WILL HELP US TO MORE EFFICIENTLY CARE FOR THE NEEDS OF THE MIDLAND EMPIRE

★

LORENZ CO.
WHOLESALE HARDWARE AND ALLIED LINES

the MAINLINERS are here!

New York—60 cities in all!

Klamath Falls now enjoys the comfort and luxury of the famous Mainliners... the expert airmanship of veteran pilots, the thoughtful attention of a United stewardess, excellent meals aloft—all in the traditional "Mainliner Manner."

United Air Lines welcomes this opportunity to serve Klamath Falls and is awaiting the delivery of additional equipment long on order which will permit United to anticipate the growing transportation needs of this community.

United Air Lines is glad that conditions now permit the inauguration of regular flying service in Klamath Falls, effective August 1st.

This means that Klamath Falls is on the Main Line Airway—the straight, strategic route of the Mainliners—and only short hours away from the key cities of the nation.

The addition of this new service is another step in United's long-established policy of bringing the many advantages of air travel to more and more people.

It links Klamath Falls closely to Portland, Seattle, San Francisco, Los Angeles and—across the country on the short, direct route—to Denver, Chicago, Cleveland, Washington,

From Klamath Falls to	Hours	Fare*
PORTLAND	2 1/4	\$12.15
SEATTLE	3 1/2	18.40
SAN FRANCISCO	2 1/4	12.15
LOS ANGELES	4 1/2	27.30

*Plus Federal Tax
Fares are no higher than first class surface transportation

UNITED AIR LINES

PASSENGERS • MAIL • EXPRESS • FREIGHT

Airport Terminal Call 3124 or an authorized travel agent