

Reclamation Compromise Figures Out

WASHINGTON, June 25 (AP)—The house and senate today were given a conference committee's recommendations on the money that should be granted for reclamation projects during the fiscal year beginning July 1.

Generally, the figures were above those approved by the house in its passage of the interior department appropriation bill, and lower than the senate grants.

The conference committee's report must be approved by both the house and senate. It recommended \$1,000,000 for completion of the controversial 230-kilovolt power transmission line in the California Central valley from Oroville to Sacramento on the east side of the Sacramento river.

The senate approved \$4,572,000 for transmission lines which have provided a second high voltage line from Shasta substation to Tracy and a 115-kilovolt line from Keswick dam to Sacramento, but both of these lines were disallowed in conference.

Other appropriations recommended for specific projects included: Deschutes, Ore., \$1,716,836; Owyhee, Ore., \$125,000; Klamath, Oregon-Calif., \$1,281,605. General investigations by the reclamation bureau, \$5,900,000.

In addition to the Oroville-Sacramento line in the California Central valley, the conference committee recommended \$10,000 for the Shasta-Oroville link and \$50,000 for extension of the power distribution system of the Contra Costa canal.

WELDING - REPAIRS ON THE SPOT!
Mundin Maintenance and Repair
Parable Ave and Acetylene
Phone **MM & R** 8567

Stars To Radishes

PARIS, June 25 (AP)—L'Aube, President Georges Bidault's newspaper, said today his hobbies rank in this order:
Astronomy.
Stamp collecting.
The study of mushrooms.
The study of locomotives.
Reading.
Eating black radishes.

Lack Of Meat Hits Portland

PORTLAND, June 25 (AP)—Portlanders peered into virtually empty meat counters today and were told that there was little chance of the shortage improving this week. Many shops were closed.

Butchers who have been able to obtain some fresh beef, pork or poultry during the months when other sections of the country were forced to become vegetarians reported—while refusing to be quoted—that even the black market was bare of meat supplies.

Nathan B. Swift, manager of the Portland plant of Swift and company, reported his slaughter plant had processed only "one fourth of one per cent of its quota" during the past four weeks.

"In the last three weeks we have been able to buy less than 20 head of cattle," he said.

Washing Machine PARTS and SERVICE

- Largest Parts stock between Portland and San Francisco. We will ship parts anywhere!
- Most completely equipped shop of its type in Southern Oregon
- 36 Years combined service back of every job.
- We have a large stock of wringer rolls, all makes.

MERIT WASHING MACHINE SERVICE
Phone 5669 611 So. 6th

First Federal Pays Dividend

The board of directors of the Pacific First Federal Savings and Loan association again voted a dividend at the rate of two per cent per annum on balances as of June 30. According to E. E. Buckmaster, president of the association, Pacific First Federal now has assets of over \$40,000,000, with surplus, reserves, and undivided profits of over \$2,750,000. Government bonds are carried on the books at \$15,807,500 with a market value today of \$16,405,562.50.

Pacific First Federal now ranks as the largest savings and loan association in the Pacific Northwest, with offices in Tacoma, Seattle, Bellingham, Portland, Eugene, Longview, and Klamath Falls. The head office is located in Tacoma.

A. B. Epperson, manager of the Klamath branch of the association, has processed some 30 GI loans amounting to approximately \$140,000, since the cessation of hostilities.

Hans Norland Auto Insurance, 123 N. 6th St.

Amazing Discovery in a Hearing Aid

A big improvement has been made in a hearing aid now welcomed by thousands. This new one-unit aid is so light in weight you'll hardly know you're wearing it. Requires no separate battery pack, battery case or garment. Made so you can adjust it yourself to suit your hearing. The tone is clear and powerful. Remarkable new "X-Cell" retains full power up to 50 hours continuous use. Eliminates alternating batteries two or three times a day. Includes many other improvements for your comfort and better hearing. The makers of Beltone, Dept. 7542, 1450 W. 19th St., Chicago 8, Ill., are so proud of their achievement they will gladly send free descriptive booklet and explain how you may get a full demonstration of this wonderful hearing device in your own home without risking a penny. Write them today.

SEARS HARMONY HOUSE FURNITURE

★ QUALITY ★ VALUE ★ APPEARANCE



Hardwood Frames!
Coil Spring Construction!
2-Pc. Living Room Group

An Outstanding Value!
Specially planned for a spotlight value now! Large, comfortable davenport and chair with hardwood frames and full coil spring construction. Attractive, durable covers.
184.95



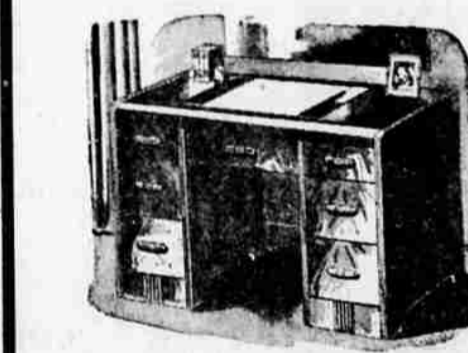
5-Piece Dinette Set
Hardwood set in lovely lined oak finish. 32x44-in. extension table opens to 34x54 inches.
84.95



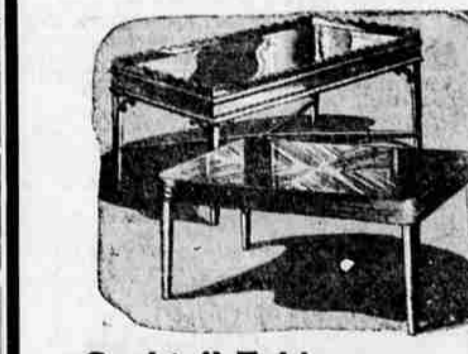
Mattress and Springs
50-lb. cotton linters mattress. ACA ticking. Box spring has 63 coils, 10 lbs. insulation.
43.90
Both For



Luxury Carriage
Wire wheels with rubber tires, black leatherette cover, pyroxylin coated.
24.95



Kneehole Desk
Solid hardwood in walnut or maple tone. Six roomy drawers, two of which are extra deep.
39.95



Cocktail Tables
Two styles—one with gleaming glass top and railing... the other with matched veneer top.
13.95

5-PIECE EXTENSION TABLE DINETTE
49.95
Sears Easy Terms
Natural waxed dinette set with a glossy mirror finish. Extension table and four side chairs with tap-estry slip seats.
Buy ANYTHING at Sears Totalling \$10 or More on EASY TERMS

Brand New 3-Pc. GROUP
With Hand-Glazed Finish
New and different, yet with a fundamental beauty of design you never tire of. Note the smooth, flowing lines, the massive effect. The mirror may be hung on wall or placed on top of vanity. All pieces solidly constructed, and with a satin smooth brushed-brown hand glazed finish. Full sized bed, chest, vanity.
With twin beds 144.95. Bench 9.95, Stand 12.95.
119.95

Yes, We Buy Almost Everything From Our Sears Store Or Catalogs!...

SEARS ROEBUCK AND CO.

An Unbeatable Way to Shop & Save!
If You Can't Find What You Want in Our Retail Store Your Best Bet is Sears Catalog Order Desk.
Note these typical catalog values!

Self-Priming 2 1/4 H. P. Gasoline Engine Driven "Water Wizard"

CENTRIFUGAL PUMPS!

- Portable—These pumps can be put on the job quickly!
- Need to be hand primed only once! Then they are self-priming!
- Equipped with air-cooled 4-cycle engines—easy to start!

Model No. 22U with Wisconsin AB Engine built to Navy Specifications! Capacity, 5000 gallons per hour at 10-ft. head. 2 1/2 H.P. at 2100 R.P.M. Self cleaning... High suction lifts guaranteed up to 25-ft. at sea level.

Fast Action, All-Purpose

Homart Mixers

Many purpose, low-cost mixer built with a strong steel yoke and sturdily braced with steel cross bars. This efficient HOMART Mixer has a heavy-duty, 18-gauge steel drum and extra-heavy cast head. Mixer has 3 cubic foot capacity (makes 2 1/2 cu. ft. batch of wet concrete). Improved design with exclusive gear ratio of 12 to 1.
43.50

- Camp Stoves 6.25
- Umbrella Tents 35.95
- Venetian Blinds 4.64
- Rogers Silverware 26.75
- Buzz Saws 49.50

If you can't shop in person
PHONE 5188
courteous assistants will write your order and notify you when your merchandise arrives!
Easy Terms on purchases totaling as little as \$10 or more!