

Film Impresario Leads Money-Makers For 1944; Turf Man Places Second

WASHINGTON, June 17 (AP)—Movies, horse racing and motor making accounted for the first five places today in a treasury listing of 593 top paid Americans in 1944.

Movie Producer-Director Leo McCarey, with 12-month earnings of \$1,113,035, headed the list easily, while Charles H. Strub, vice president of the Los Angeles Turf club, was lengths behind in second place with \$466,537.

Movie financier Charles P. Skouras and Actor Fred Mac-

Murray stood third and fourth with \$393,000 and \$391,217, respectively, and Motormaker Charles E. Wilson, president of General Motors, was fifth at \$362,954.

The figures cover corporation payments of \$75,000 or more for the calendar year 1944 and business fiscal values which ran into 1945. All are listed before federal, state and other taxes, which in most instances trim the actual cash by from 50 to 90 per cent.

Top-paid woman and 35th in the list which included fewer

than a dozen of that sex was film actress Carmen Miranda, who received \$201,458. Actresses Paulette Goddard and Betty Grable were her closest rivals with \$187,333 and \$172,000, respectively.

Four businessmen and a movie executive made up the lower half of the top ten.

Sixth was E. H. Bobst of Montclair, N. J., president of the Hoffman-La Roche drug firm, with \$300,000. Seventh and eighth places went to Ormond E. Hunt and Albert Bradley, General Motors vice presidents who drew \$287,745 and \$276,019 respectively.

Theodore Seltzer of Weehawken, N. J., head of Bengue, Inc., ointment making firm, was ninth with \$266,691, and Darryl F. Zanuck, vice president of Twentieth Century-Fox Film Corp., was tenth with \$260,933.

General Motors led in single-company placements with 40 men in the list. (The company

said in a statement, however, that the payments listed included stock bonuses earned in earlier years and that the 1944 earnings of its executives actually averaged about 20 per cent below the listed figures.)

In order to make a honey crop, bees from a good colony must visit up to 520,000,000 flowers during the season.

Norblad Rakes Spruce Funds

WASHINGTON, June 17 (AP)—A house appropriation of \$10,000 to close out World War I affairs of the United States Spruce

corporation has aroused the ire of Rep. Norblad (R-Ore.).

He told congress the people of the Pacific northwest who are familiar with the corporation's activities would be amazed to know that taxpayers' money still was being spent on it.

"The purpose and usefulness of the spruce corporation, which was organized in August, 1919, ended on Armistice Day of that

same year," Norblad declared. "It was the sole purpose of this corporation to provide spruce lumber for the aircraft of the United States and our allies during the first World war."

"It is absolutely inexcusable that liquidation of that corporation should have taken 20 years."

MONDAY, June 17, 1946, Page Ten

Norblad said that unless the affairs are closed by January 1, 1947, which the bill provides, he would demand full investigation of its accounts.

Hans Norblad Fire Insurance, 123 N. 6th St.

Classified Ads Bring Results

CAMERAS and PHOTOGRAPHIC SUPPLIES ARE BACK!! See the NEW CAMERA CATALOG

For Values in Photographic Equipment. Nationally known brands at Ward Prices.

- Eastman Target Brownie 3.45
Takes 8 pictures on 620 film. Easy to operate.
- Synchro-Brownie Reflex Camera 7.50
Gives 12 clear pictures on No. 127 film.
- Hand Flash Camera Gun 2.50
Make flash pictures with most cameras.
- Six-20 Jiffy Quality Kodak 9.80
A compact, stylish and efficient Kodak.
- Eastman Vigilant Junior Kodak 11.00
Takes 8 pictures on 620 film. Prices include tax.
- Eastman Vigilant Camera 31.50
f/4.5 lens and Kodamatic shutter.
- Burke & James 4x5 Press Camera, 185.95
f/4.5 coated anastigmat lens. Prices include tax.
- Miniature Speed Graphic Outfit 245.10
Graflex Optar and complete accessories.
- Eastman Kodak Reflex Camera 109.90
Kodak anastigmat f/3.5 color corrected lens.

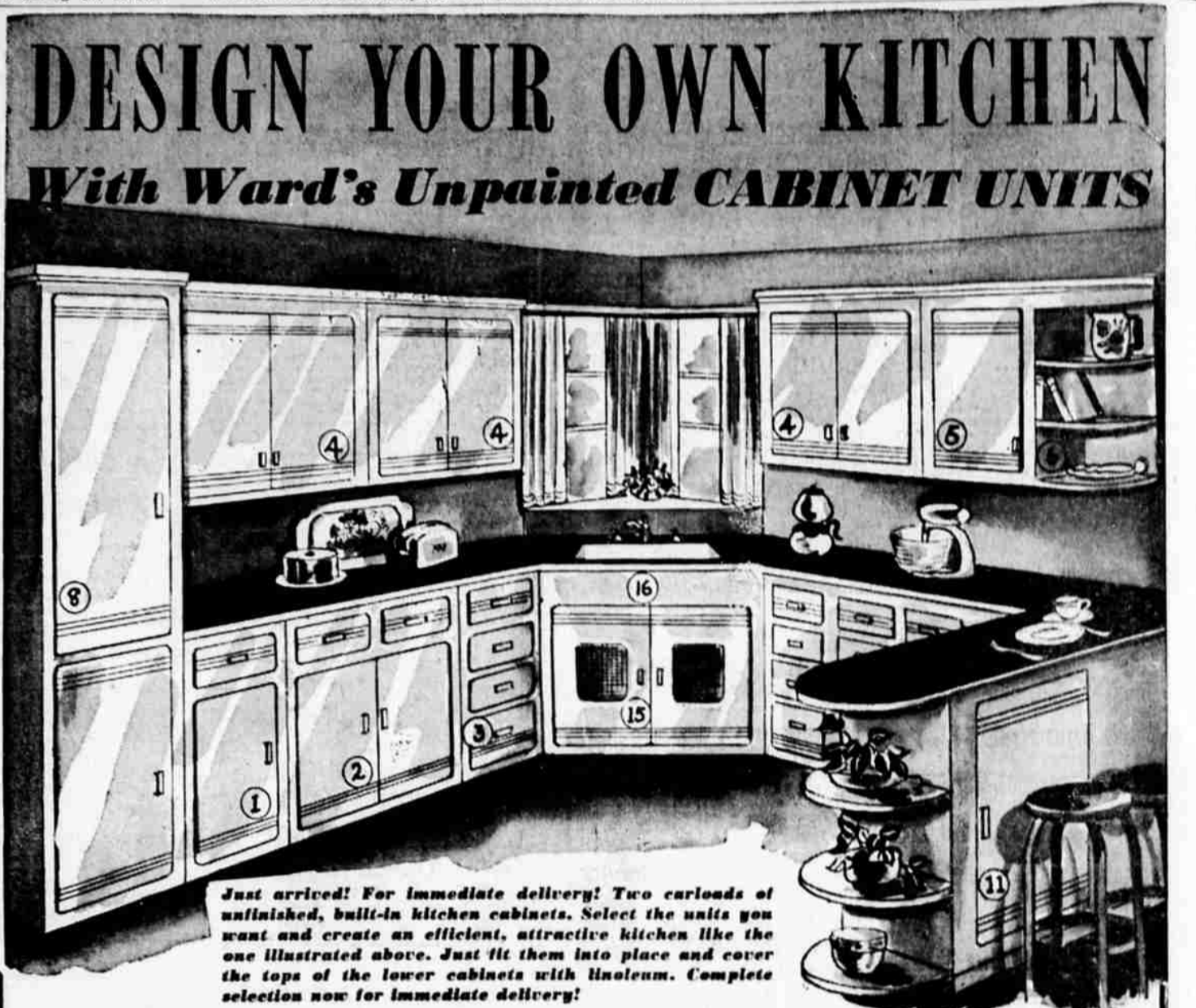
(All Prices Include Federal Tax)

<p>Model K-8 Keystone Movie Camera 47.25 8mm movie cameras at money saving prices</p>	<p>Revere "88" Cine Camera 67.85 8 mm camera with 5 shutter speeds</p>	<p>Model 25 Eastman Cine-Kodak 52.65 f/2.5 lens. A quality camera at low cost</p>
--	---	--

- Model R-8 Keystone Projector 68.00
Takes up to 400 feet 8 mm film.
- Model 85 Revere Projector 95.50
Deluxe Revere 500 W projector. 8 mm.
- 16 mm Cine-Kodak Camera 143.55
Kodak anastigmat f/1.9 focusing lens.
- Kodascope Sixteen-10 Projector 82.50
16 mm, color or black and white film.
- Model G-816 Bolex Projector 331.00
Projects both 8 mm and 16 mm movies.
- Kodachrome Daylight Type Film 4.29
6 sheets 2 3/4 by 3 3/4 inches. Mailed postpaid.
- Kodacolor Film for Roll Cameras 1.28
Size 127 Kodacolor. For color pictures.
- No. 620 Eastman Verichrome Film, 3 for 98c
Suitable for folding and box type cameras.

These . . . And scores of other Accessories are now available for immediate delivery.

See New Catalog in Wards Catalog Dept.
Montgomery Ward
CATALOG DEPT. Phone 3373



DESIGN YOUR OWN KITCHEN With Ward's Unpainted CABINET UNITS

Just arrived! For immediate delivery! Two carloads of unfinished, built-in kitchen cabinets. Select the units you want and create an efficient, attractive kitchen like the one illustrated above. Just fit them into place and cover the tops of the lower cabinets with linoleum. Complete selection now for immediate delivery!

Sold in Sizes to Fit Any Size Room!

<p>1 Single Cabinet Shown above, 36 in. high, 1 shelf, 1 door, 1 drawer. 15, 18 and 24 inch widths. 15 in. without top, 7.11 15 in. with top...9.19</p>	<p>2 2-Door Cabinet Shown above, 2 doors, 2 drawers. 30 in. wide, 36 in. high, 1 shelf. Without top...12.43 With top...12.93</p>	<p>3 4-Drawer Cabinet Shown above, Lower cabinet 36 in. high, 15, 18 or 24 in. wide. Without top, 15 in. wide...9.94 With top, 15 in. wide...10.21</p>	<p>4 Double Door Cabinet Shown above, Comes in 4 sizes with 1, 2 or 4 shelves. 24 in. high, 1 shelf...9.25 30 in. high, 2 shelves...10.31</p>	<p>5 Single Door Cabinet Shown above, Comes in 3 widths, and 4 hts. 1, 2 or 4 shelves. 15 in. wide, by 24 in. ...5.87 15 in. wide by 30 in. ...6.69</p>
--	---	---	--	--

<p>5-Drawer Lower Cabinet Not pictured in room scene. 30 in. wide and 36 in. high. 3 large drawers, 2 small drawers. Without top...17.59 With top...20.63</p>	<p>Two-Door Cabinet Has 3 drawers. Not shown in room scene. 1 shelf, 30 in. wide, 36 in. high. With top...18.09</p>	<p>Lower Corner Cabinet Not pictured in room scene. 36 in. high, 39 in. wide, with or without top. Without top...14.14 With top...16.42</p>
--	---	--

<p>Upper Corner Cabinet Not pictured in room scene. Right or left hand door. 4 sizes available. 24 in. ht. 1 shelf...7.80</p>	<p>Five-Drawer Cabinet Not pictured in room scene. 1 door, 5 drawers. 30 in. wide, 36 in. high. Without top...17.55 With top...20.59</p>
---	---

<p>Sink Cabinet Pictured above and in room scene. Without top, doors included. 30 in. wide for 24-inch sink. 13.80</p>	<p>Kitchen Bar Pictured also in room scene. Useful for snacks. 2 shelves. One door on each side of bar. Without top, 48 in. width...20.83 60 in. width...24.46</p>
--	---

Montgomery Ward