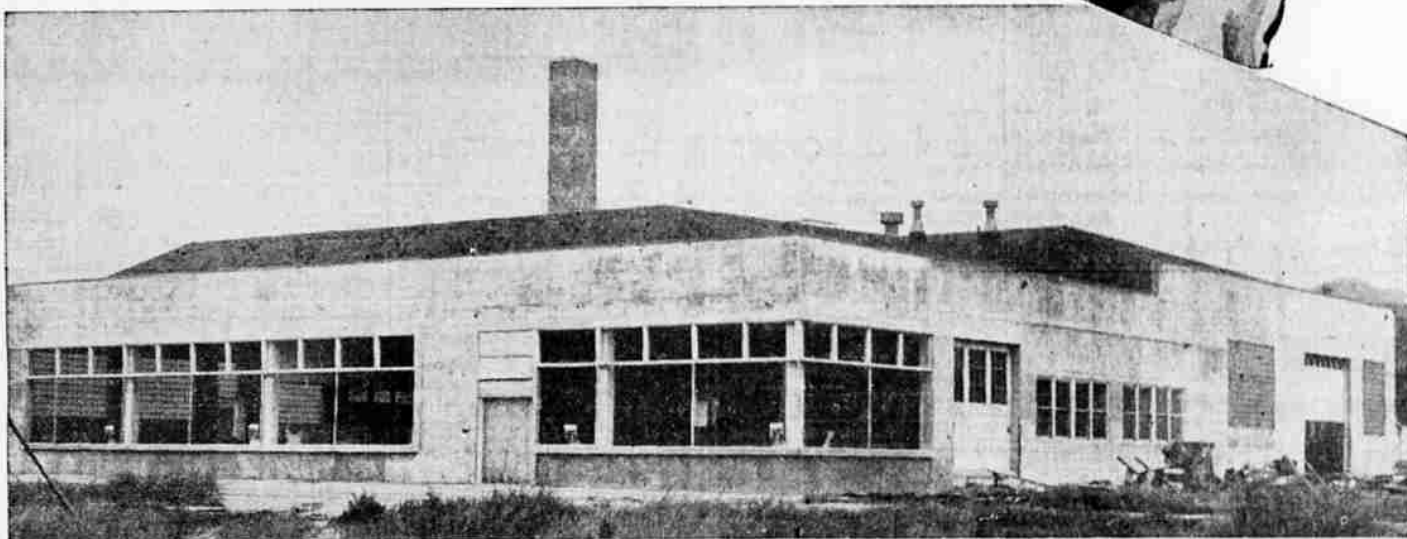


GEARED TO THE KLAMATH BASIN



**ALLIS-
CHALMERS**

**WHITE
TRUCKS**



NEW, MODERN PLANT OF WEST-HITCHCOCK CORP, 677 S. 7TH



DICK PEPWORTH—Parts department, 9 years experience with truck parts and accessories. Navy storekeeper during war.



CHARLIE CARY—3 years parts experience. Formerly parts manager for local concern.



RALEIGH GREENE—Tractor shop foreman. Shop foreman for Allis-Chalmers equipment. With this organization since 1940. Served our equipment in the army during the war (1942-1946).



SHORTY LAYTON—Formerly Allis-Chalmers factory service man, 12 years experience with Allis-Chalmers equipment.



MARION REYNOLDS—Formerly service man for Big Lakes Res. Co. With West-Hitchcock for over one year.



NEIL WARREN—Machinist and auto repair man. Formerly shop foreman for White Motor Co., factory branch in Portland.



DON McDOWELL—Truck shop foreman. Formerly shop foreman for the White Motor Co. factory branch in Portland.



VIC CASTER—Formerly service man for Long-Bell Lumber Co., agricultural serviceman.



PHIL HITCHCOCK—President and manager. Formerly in logging and sawmill business in Sisters, Oregon.



MERLE WEST—Vice-president and treasurer. Identified with Klamath enterprises for many years.



R. A. McNABB—Assistant manager, 7 years experience with Allis-Chalmers equipment as factory service man and district sales manager.



MEL WORRELL—Industrial salesman. Formerly 12 years with Filtmore Oil Co., mgr. of Lubricating Oil Sales, Oregon division.



CARL HAGEL—Agricultural salesman. Agricultural and sales experience in Minnesota previous to war, USMC, 1942-1945.



BILL MOODY—Parts Manager, 5 years experience as manager of parts department for Allis-Chalmers dealer.



MARY ANN LEE—Bookkeeper.



MARGE HARRISS—Accountant.



PAT ERLANSON—Stenographer.



ALLIS-CHALMERS EQUIPMENT
In operation on Winema Farms, Tulelake.
Equipment owned by Steve Tokacs, Tulelake.



ANOTHER LOGGING OPERATION
in Klamath county where White trucks have been used consistently for many years.

PHONE 7771

WEST-HITCHCOCK CORPORATION

ALLIS-CHALMERS
SALES AND SERVICE P. O. BOX 71 - 677 SOUTH SEVENTH STREET
KLAMATH FALLS, OREGON.

To our Customers and friends:

Demonstrating our confidence in the future of Klamath Falls and recognizing our obligation to provide service worthy of the equipment we sell, we have constructed one of the most modern and completely equipped facilities for truck, tractor, and farm equipment repair between San Francisco and Portland.

As of this date, we will be located in our new building at 677 South Seventh Street. Due to the fact that the building is not entirely completed and some of our equipment has not arrived, we will not have our formal opening until a date which will be announced later.

The people pictured on this page comprise our present organization. The service department we expect to increase as rapidly as possible up to our ultimate capacity. You will find these people courteous, efficient, and experienced.

Material shortages and suppliers' strikes have cut off our supply of equipment, but you will find no shortage of courtesy or of consideration for your problems.

Yours respectfully,
Phil Hitchcock

White - FOR MORE THAN 40 YEARS THE GREATEST NAME IN TRUCKS.

WEST-HITCHCOCK CORP.



WEAR A
V.P.W.
BUDDY
POPPY
MEMORIAL DAY