

Livestock And Poultry Goals Reduced In 1946

CORVALLIS, Jan. 24 (AP)—Crop goals for Oregon in 1946 were set at or above last year's production, but livestock and poultry aims—excepting dairy products—have been reduced, a federal agriculture official announced today.

Langell Valley Soil District Shows Profit

Langell Valley soil conservation district started on its sixth year in good financial condition, following the annual meeting held last Friday night at the Lorella community hall.

The year's accounts show a 1945 profit of \$2169.95. Receipts for the year totaled \$11,888.07, and expenses ran up to \$9718.12.

Reports of the year's program, as read at the meeting by William Burnett, the supervisor, showed approximately 69,980 acres were added to the district in the year. The district now includes 150,192 acres, of which 53,722 are private lands.

Approximately 734 acres of heavy leveling was done in the year, about 200 acres more than the previous year. Land leveling was done on 1091 acres, and up about 300 acres over the year before.

Some 62,054 lineal feet of drains of four feet or more in depth were dug in the year. Since the formation of the district, about 200 miles of drains have been dug, affecting 4095 acres of land.

Topographic surveys have been made on 2453 acres in 1945. Detailed engineering surveys have preceded the land leveling and drainage work.

Supervisors of the district include Robert R. Davis, Lloyd Gift, Walter Smith, Lloyd Embrey and William Burnett.

Much interest and enthusiasm were in evidence at the annual meeting. A potluck dinner preceded the business session, and an entertainment feature was the showing of motion pictures of land conservation work by officials of the soil conservation service.

Seed Grades Discussed By Specialists

Grades and standards for seed and commercial potatoes for Klamath district were discussed by specialists in this field who spent Wednesday in spud cellars and at shipping points in the basin checking certified seed stock.

Frank McKennon, fruits and vegetables man of the state department of agriculture, William Close, in charge of state-federal shipping point inspection work, J. R. McCambridge, seed certification specialist at OSC, represented their various departments discussing the subject with Assistant County Agent Walter Jendrzewski and Ross Aubrey, inspector in charge of state-federal shipping point inspection work for Klamath district.

Canada May Take Oregon Potatoes

Because potato supplies in British Columbia are exceeding in short, Canada is issuing permits for limited importation of U. S. No. 2 grade, 1 1/2 inch minimum size, from Washington, Oregon and Idaho and Modoc and Siskiyou counties in California. Purchases will be made at not less than support prices.

marketing administration field service director, said goals were determined after conferences between federal and state agriculture leaders.

Sharpest crop increase was for alfalfa, clover and corn.

The goals: Corn, 50,000 acres, up 25 per cent; oats, 450,000 acres, up 10 per cent; barley, 260,000 acres, up 7 per cent; tame hay, 880,000 acres, up 4 per cent; wheat, 1,000,000 acres, up 3 per cent; rye, 35,000 acres, up 6 per cent; flax seed, 1000 acres, no change. Cover crops and legume seed, hairy vetch, 85,000 acres, up 2 per cent; Willamette vetch, 70,000 acres; Austrian winter peas, 30,000 acres, up 7 per cent; common rye grass, 80,000 acres, no change; alfalfa, 10,000 acres, up 43 per cent; red clover, 20,000 acres, up 53 per cent; Alsike clover, 25,000 acres, up 150 per cent; Lucerne clover, 10,000 acres, up 41 per cent.

There was no change in acreages for: dry beans, 1000 acres; sugar beets, 17,000 acres. But potatoes, at 46,000 acres, will drop 16 per cent. No goals were set for canning vegetables, but gardening by individuals and commercial canners is expected to increase.

Milk, 1,445,000,000 pounds (260,000 cows needed); eggs, 37,640,000, down 5 per cent; chickens, 4,251,000, down 8 per cent; turkeys, 2,221,000, a 15 per cent decrease; cattle and calves by January 1, 1,500,000, a 3 per cent decrease. Sows, 20,000 farrowing by spring.

Scholarships Won By Two Navy Veterans

Two "living war memorial" scholarships in dairying were announced this week by the Oregon Milk Distributors association for outstanding students attending Oregon State college.

The scholarships are open to any boys majoring in the division of animal industries and are awarded on recommendation of the faculty.

Co-winners of the 1946 scholarships are Oliver K. Beals and Julius Covington, navy veterans who are now majoring in dairy manufacturing at OSC. Both are residents of Corvallis.

Through this scholarship the distributors' association hopes to interest outstanding young men in the milk industry. "Production and distribution of milk is of prime importance to the economy of Oregon," S. J. Kremers, Portland, president of the Oregon Milk Distributors association, said. "Dairying returns more cash dollars to the farmer than any other crop in the state. We are interested in higher quality milk and we believe this scholarship will pay out."

Poultry Feed Situation Worse

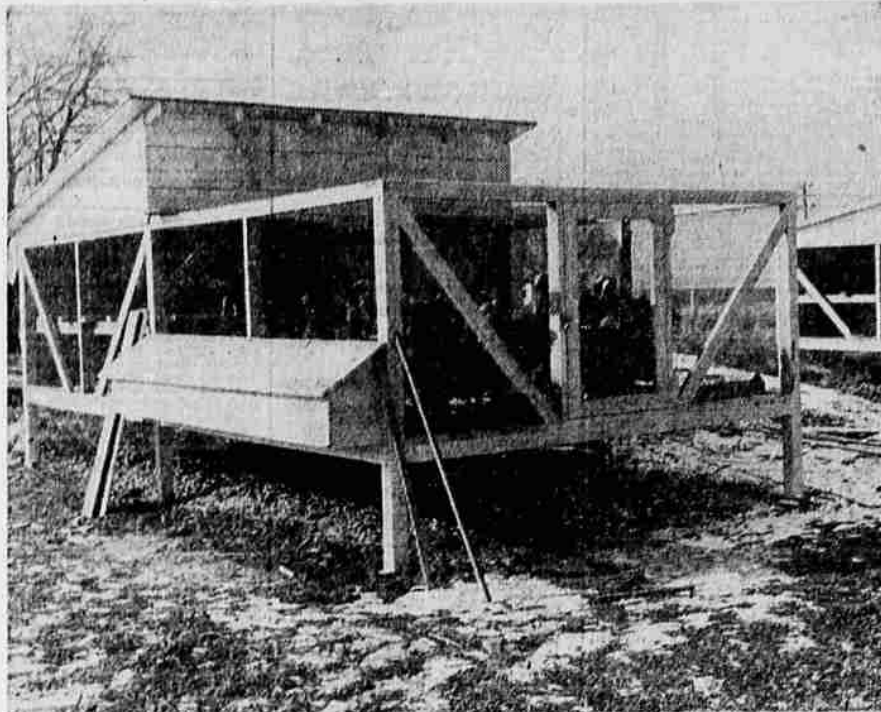
CORVALLIS, Jan. 24 (AP)—Oregon poultry and turkey growers today were warned to be certain of feed supplies for 1946 before planning large flocks.

Noel Bennett, state college poultry specialist, said the feed situation has become worse than during the war years with distribution uneven and demand above supply.

DEDUCTIBLE
Income tax is here again, and wheat growers are reminded that premiums for all-risk federal crop insurance are deductible from gross income as operating expense in computing a taxable income.

Spring wheat growers have until March 16 to insure their 1946 crop. Contracts may be signed at the county AAA office or with an authorized sales agent named by the county committee.

Their Home From Birth To Market



Located on the farm owned by Dr. William Bundrant on the Merrill road is this novel turkey shelter. In this battery, the birds are housed and fed from birth to market. Dr. Bundrant has two such batteries housing 44 turkeys. The plan of battery-raising turkeys was recently developed by J. C. Averill of the National Turkey Institute in Columbia, Kas.

National Potato Letter—800-Car Gain Reported In Spud Shipments Last Week

Shipments last week jumped almost 800 cars to a total of 5801, averaging 965 per day. That checks the short-fall as compared with last season, but still leaves us uncomfortably far behind with a long way to go. Seed remains the pressing problem, with southern planting areas urging special consideration in furnishing cars for seed shipments.

Increasing movement during last 322 weeks will relieve some of the pressure, but seed probably will move too slowly to suit planters for some weeks to come. Incidentally, we hear trade rumors to the effect that some of the 90 to 120 cars weekly being received from Canada, ostensibly for seed, are being used in table stock channels. Too bad if true, because USDA and Canadian government are subsidizing potato movement to Canada for the benefit of both Canadian consumers and U. S. potato industry. Seems a sad commentary on U. S. business to have to admit abuses of incoming seed shipments. Hope it isn't so.

For the past week's shipments, Idaho increased 322 weeks, Maine slowed down with 97 cars below the previous week, Red River Valley was up 200, other states changed by smaller steps but mostly up. Among the early states, Southern California now has a total of 145 cars, with 20 last week; South Florida has a total of 454, with 178 last week; Texas is moving very little, having a total of only eight cars with none at all reported for last week. Early movement will have to be reckoned with after the next five weeks.

Demand, Prices and Markets
Round-up of markets shows most of them reporting demand slow to moderate, mostly steady and fair. Markets range from slightly weaker to steady. Maine has a slow demand, steady market, price a nickel below to dime over ex-celling. Idaho reports a fair demand, steady market, price 15 cents over ceiling. North Dakota demand has continued slow, market about steady for No. 1's, slightly weaker for com-mercials, price a dime under floor for No. 1's with very few sales. Colorado, demand has ruled moderate, market about steady, price 25 cents over ex-celling for washed stock. Wisconsin shows up weaker, with too few sales to establish a market. Michigan demand has been light, market slightly weaker, price 20 cents under ex-celling and dime over floor. Up-state New York, demand ruled slow, market about steady, price 10 cents over ex-celling.

Belle Glade, Florida reported fair to moderate demand most of the week, with the market showing a decidedly weaker tendency. Market was reported steady Tuesday, but at a level 70 cents per cwt. below the average of last week. Price is still almost

1.80 over ex-celling, but doesn't cause much commotion because of the small volume.

In general, potato markets are spotty but lower, showing the reaction from very light holiday shipments. This supports our belief that the trade is not excited, buying sparingly, apparently expecting something to happen.

In the terminals, New York reports a dull call for old stock, dull and slightly weaker for new, bearing out the Belle Glade f.o.b. report. Chicago has a slow demand, unsettled and slightly weaker tendency. Latest available report from San Francisco for 101 wholesale lots indicates a steady market but few sales, mostly Nevada Triumphs, at \$3.10. Atlanta held steady; Boston, dull for old, no new supplies; Detroit, old steady, new about steady; Minneapolis, steady; Philadelphia, old dull, new dull and slightly weaker, same trend as New York. Maybe the butter shortage has something to do with it.

Situation on old crop price support has not much changed. Industrial diversion is ended for the time being except for starch. European exports are a question mark, partly account cars, partly account price levels. But the new dual and slightly weaker, same trend as New York. Maybe the butter shortage has something to do with it.

Canadians evidently still want U. S. potatoes. Deal now includes U. S. No. 1, size B, and permits sellers with truck access to border to move shipments to or across border by truck, thus easing pressure on rail equipment and making volume increase possible. Canadian sales to date are about 3400 cars.

The 1946 support program still is under fire. Note that its schedules are headed "U. S. No. 1 quality," not U. S. No. 1 grade. Official explanation is that U. S. No. 1 quality is simply U. S. No. 1 grade in all respects, but with our tolerance for defects or under-size. In other words, a carload could be 100 per cent U. S. No. 1 grade, but only 91 per cent U. S. No. 1 quality. This means that in selling a 450-sack car to USDA at \$1.60 f.o.b. the seller would not necessarily receive 450 times \$1.60, or \$720. He would receive 409 to 450 times \$1.60, or \$654 to \$720. Looks like a scheme to promote tight grading, which is a good ob-

Turkeys Raised By New Method

An entirely new method of raising turkeys, the only one of its kind in Klamath county, is being tried out by Dr. William Bundrant on his farm on the Merrill road.

Dr. Bundrant raises his turkeys by the "battery method" of feeding, which was developed by J. C. Averill of the National Turkey Institute of Columbia, Kan.

The batteries, in which the turkeys are housed and fed, are especially designed shelters 10 feet wide and 20 feet long, standing above the ground on two-foot stilts.

The front half of the wooden structure serves as a pen, enclosed in wire. The back is boarded and used as a house, complete with roosts. Housing the turkeys in pens and feeding them from bins keeps them from touching the ground from birth to market. By this method the birds avoid the many diseases carried to them by chickens and other barnyard fowl, Dr. Bundrant believes another advantage of the battery method is that it prevents stampeding and the consequent loss of the birds involved in range-fed turkeys.

Advocates of the idea say that the battery-fed turkeys grow larger, and the meat is tastier and more tender than range-fed birds. As many as 5000 turkeys may be raised on one acre of ground in the battery method.

When Dr. Bundrant's turkeys were five months old, he estimated that their average weight was 18 pounds. The Bundrants tried roasting some of their turkeys during the holidays, and Mrs. Bundrant remarked that cooking the bird took less than two hours.

Dr. Bundrant first became interested in his experiment last summer when he read about it in a magazine advertisement. He has 44 turkeys now, but hopes to be able to enlarge eventually.

MEET SLATED
SALEM, Jan. 24 (AP)—Officers of the Oregon Republican club will meet in Portland February 2 to make plans for the 1946 political campaigns, Joseph B. Felton, president, said today.

Stromberg-Carlson Radios, Derby's Music Co.

jective but the method may be open to question.

Miscellaneous
Brewster Bill (S. 1396) is becoming increasingly controversial. It seems to be regimentation of the first order, but with an element of control in the hands of the industry through the referendum. At the same time, it would deny price support in the event of an unfavorable referendum. Growers and the trade are asking a lot of questions, and we hope they are getting straight answers. Some groups (notably New York's Empire State Potato Club and California's Kern County Potato Growers association) apparently are on record in opposition to the bill. Best thing in the situation is that it points up the inadequacy of the Steagall Amendment, which supports potato prices unequivalently without acreage control. Neither congress nor the country is likely to stand for the kind of expenditures—such as legislation could cost. Obviously, revision of price support ideas is of pressing importance. Question is whether Brewster Bill is the answer.

January 1 stocks report and report of 1946 acreage intentions are due January 20 and 21. Complete analyses of these important indicators will be furnished in a separate issue as soon as they can be prepared, along with comparisons with whatever acreage goal information is then available.

UO Students Host To Dads

UNIVERSITY OF OREGON, Eugene—University of Oregon students will entertain their dads at the first postwar Dad's Day celebration on the campus February 2 and 3.

The two-day celebration has been planned for visiting dads by Dorothy Habel, West Linn, general chairman of the weekend, and her committee members.

Registration Saturday morning will open Dad's Day activities, followed by the annual Dad's luncheon. Gene Vandeynde, Salem, president of the Oregon Dads, will preside at the luncheon, and Edward C. Sammons, Portland, will speak on "Where Do We Go From Here?"

The population of Macedonia, numbering slightly more than 3,000,000, consists of many nationalities.

CAN'T KEEP GRANDMA IN HER CHAIR

She's as Lively as a Youngster—Now her Backache is better
Many sufferers relieve nagging backache quickly, once they discover that the real cause of their trouble may be tired kidneys. The kidneys are Nature's chief way of taking the excess acids and wastes out of the blood. They help most people pass about 3 pints a day.

When disorder of kidney function permits poisonous matter to remain in your blood, it may cause nagging backache, rheumatic pains, leg pains, loss of pep and energy, getting up nights, swelling, puffiness under the eyes, headaches and dizziness. Frequent or scanty passages with smarting and burning sometimes shows there is something wrong with your kidneys or bladder.

Don't wait! Ask your druggist for Doan's Pills, a stimulant diuretic, used successfully by millions for over 40 years. Doan's give happy relief and will help the 18 miles of kidney tubes flush out poisonous waste from your blood. Get Doan's Pills.

FUNNY BUSINESS



"Wonderful salesman! When he didn't have the right size he sold the shirt right off his back!"

STORM WARNINGS
SEATTLE, Jan. 24 (AP)—Southwest storm warnings were ordered at 8 o'clock this morning for the Washington and Oregon coasts to Cape Blanco, with small craft warnings from there to Cape Mendocino.

USE
666
Cold Preparations
Liquid, Tablets, Salve, Nose Drops.
Caution: Use only as directed.

LOOK OUT FOR PIN-WORMS
Recent medical reports reveal that an amazing number of children (and grown-ups too) may be victims of Pin-Worms—often without suspecting what is wrong! And these pests, living inside the human body, can cause real distress.

So watch out for the warning signs that may mean Pin-Worms—especially the annoying rectal itch. Get JAYNE'S P-W and follow the directions.

P-W is the Pin-Worm treatment developed in the laboratories of Dr. D. Jayne & Son, after years of patient research. The small, easy-to-take P-W tablets act in a special way to remove Pin-Worms. Ask your druggist: P-W for Pin-Worms!

OVERHAUL YOUR PRESENT CAR?? YES! BECAUSE---

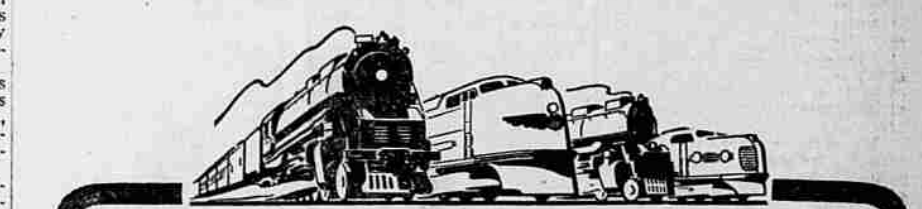
1. Prospects for new cars are not bright. New cars will probably not be GENERALLY AVAILABLE till late '46 or early '47.
2. When you do trade your present car you will RECEIVE your repair bill BACK because of higher trade-in value.
3. It pays dividends to keep your car in good mechanical condition; more economical operation, safer operation, dependable operation, higher trade-in value!

We have a complete staff of men and can do ANY mechanical job promptly and efficiently . . . All WORK GUARANTEED.

We have new factory built motors for 6-cylinder OLDS from '37 to '42.
TERMS IF DESIRED

DICK B. MILLER CO.
OLDS TOWER 7TH AND KLAMATH

Be Specific—say "Union Pacific"



They're still coming back by the thousands—those fighting men from overseas. America's railroads are doing their part to get them home as rapidly and comfortably as possible.

But civilian travel conditions will improve. Before very long you can take that trip East, to Colorado, or other of the many scenic areas served by Union Pacific.

Travel in comfort over one of the nation's smoothest roadbeds. Sleep soundly—dine relaxed—enjoy the ever-changing scenic panorama. Your journey by train will be a high spot of your vacation or business trip.

Take your choice of a Union Pacific Streamliner . . . a Limited . . . or the famous low-cost Challengers.

Union Pacific offers the world's greatest vacation bargain; serves more western scenic regions than any other railroad.

There's a simple, highly satisfactory way to arrange for safe, enjoyable transportation; just be specific, say "Union Pacific."



Hughes Garage
Now Located at 3840 So. 6th (At Altamont Auto Camp) Phone 4289

We thank you for your patronage at our old location at the Lakeview junction and invite you to stop in at our new one.

"Happy" Hughes
We Carry A Full Line of **WILSHIRE PRODUCTS**

THE PROGRESSIVE UNION PACIFIC RAILROAD
ROAD OF THE Streamliners AND THE Challengers

Day of Month	Season 1946-47			Season 1945-46		
	Daily	Jan. to Date	Season to Date	Daily	Jan. to Date	Season to Date
1	1	1	6777	5	5	8111
2	1	2	6779	5	9	8196
3	40	72	6881	77	167	8273
4	27	99	6908	79	246	8352
5	31	130	6939	79	325	8431
6	0	130	6939	80	405	8511
7	30	160	6969	3	408	8514
8	42	202	7011	71	479	8585
9	36	239	7047	83	562	8668
10	48	286	7085	75	637	8743
11	31	317	7126	80	717	8823
12	30	347	7156	68	785	8881
13	0	347	7156	64	849	8955
14	30	383	7192	0	849	8955
15	40	423	7232	68	917	9023
16	30	453	7252	60	977	9083
17	30	473	7282	67	1044	9150
18	29	502	7311	53	1097	9203
19	35	537	7346	49	1146	9252
20	0	537	7346	58	1204	9310
21	57	594	7403	4	1208	9314
22	07	601	7470	35	1243	9349
23	07	728	7537	44	1287	9393
24				42	1329	9435
25				52	1381	9487
26				33	1414	9520
27				40	1454	9569
28				3	1457	9563
29				17	1474	9580
30				20	1494	9600
31				33	1527	9633