

# Klamath Victory Loan Committee

## Committee Undertakes Bond Drive

Making the First Victory Loan drive, which is now in progress, a successful one in Klamath Falls is the job undertaken by the bond drive committee, composed of representatives of various service organizations.

The present drive is being managed by a group of allied service clubs who have handled previous drives individually, and have joined in the management of this one.

The organizations participating include the Kiwanis club, the Rotary club, Lions, Junior chamber of commerce, Business and Professional Women's club, and the Soroptimist club.

In all past war loan drives, Andrew Collier and J. Verne Owens have served as county chairman and co-chairman. The committee for the latest drive is headed by Elton H. Thompson, chairman, and Myrtle C. Adams, co-chairman.

All photos on this page by Kennel-Ellis.



**ELTON THOMPSON**  
Chairman



**MYRLE ADAMS**  
Co-chairman



**PAUL LEE**  
Special Events



**PAUL SKEEN**  
Business Division



**CHET HAMAKER**  
Special Events Assistant



**MITCHELL TILLOTSON**  
Agricultural Division



**CORAL SABO**  
Organizations and Schools



**ESTHER LAWLER**  
County Secretary



**KATHLEEN THOMPSON**  
Publicity



**CHARLES H. MACK**  
Payroll Savings

## COUNCIL GRANTS BUILDING PERMITS

Additions and improvements to buildings in the city limits were approved by the council at Tuesday night's session. The following applications were granted:

- Remodel warehouse building, 135 Spring, E. A. Thomas, \$2500.
- Build residence, 2501 Eberlein, Alfred D. Collier, \$3500.
- Install underground tank, 8th and Pine, L. N. Huls, \$800.
- Add floor to warehouse, 1426 8th, People's Warehouse, \$300.
- Fire escape, Great Northern railway, W. L. Solga, \$250.
- Remodel front of Jurgensen's grocery, 1710 Oregon avenue, W. A. Coles, \$550.

## COMELY WOMAN HELD FOR MURDER

BREMERTON, Nov. 14 (P)—Comely Margaret Horne, 24, was held today in lieu of \$3000 bond in a superior court charge of second degree murder and Prosecutor Frederick B. Cohen said she admitted in a signed statement she left her dead baby in a suitcase in the Bremerton Ferry terminal.

The court complaint accused Miss Horne of neglect. Cohen said her statement related she gave birth to the child unassisted in a hotel room, that it died later, and that she then placed it in a suitcase which she intended to drop from a ferry boat. At the terminal, Cohen quoted

her statement as saying, she placed the suitcase beneath a seat and left to attend a movie. When she returned the terminal was locked and a janitress discovered the body during the night. Letters in the suitcase led them to the mother, Cohen said.

Miss Horne has been working as a waitress in Bremerton.

Alfalfa is one of the oldest forage plants in the world.

**WELL DRESSED DUCK**  
MILTON, Wash., Nov. 14 (P)—Mark Wyland is looking for a duck wearing a white handkerchief.

He said he bagged the duck on a hunting trip and knotted his handkerchief around its neck to ease the carrying chore. When a flock of ducks flew over Wyland dropped his bird to take a shot and the "dead" duck got up and flew away, handkerchief and all.

**RENT CONTROL ENDS**  
SALEM, Nov. 14 (P)—Salem's rent control, in effect for three years by city ordinance, ended today.

**"MY CONSTIPATION RELIEVED"**

"Got Relief with Grand Cereal," Says Ex-Sufferer!

If you, too, suffer from constipation, be sure to read this uncollected letter!

"My system was sluggish, after I'd been sick, and I couldn't stand harsh laxatives. I tried KELLOGG'S ALL-BRAN, and found it was grand. We have a box of it in the house all the time. Just for variety, several times a week, we mix a small portion of other cereals with the ALL-BRAN. It's delightful! And we still get the benefits from the ALL-BRAN." Mrs. Joseph W. Foutie, 86 Englewood Ave., Buffalo, N. Y.

Do you want to be free of harsh laxatives for the rest of your life? You may be, if your constipation is due to lack of bulk in the diet—and you eat a dish of KELLOGG'S ALL-BRAN and drink plenty of water every day! If not satisfied after a 10-day trial, send the empty carton to Kellogg's of Battle Creek and get double your money back! ALL-BRAN is not a purgative. It is a delicious cereal made from the vital outer layers of wheat—a most effective source of gentle-acting bulk, which helps support normal laxation! Get ALL-BRAN at your grocer's today. It's made by Kellogg's of Battle Creek and Omaha.

## FUNERAL SERVICES FOR MOTT SATURDAY

SALEM, Nov. 14 (P)—Funeral services for U. S. Rep. James W. Mott, who died Monday, will be held Saturday at 2 p. m. in the house of representatives in the state capitol here.

It is the same chamber in which funeral services were held two years ago for the late Sen. Charles McNary.

Attorney General George Neuner said that if a special election were called, the candidates could be nominated either by assemblies of 250 persons or by petitions signed by 3600 voters. This would make party conventions unnecessary.

However, if a special election is called, the decision on the method of nominating candidates would rest with Secretary of State Robert S. Farrell, Jr., who will return in a few days from Chicago.

Acting Governor Howard C. Belton said he would have nothing to say about calling an election until after the funeral.

## PARENTS' NIGHT SLATED THURSDAY

The 21st annual Parents' Night is scheduled for Thursday at 8 p. m., in the Klamath Union high school auditorium. A feature of the program will be a talk by Dr. Harry L. Dillin, president of Linfield college. By profession Dr. Dillin is an economist and has served on the national economic advisory committee of the government of the United States. In this capacity he met with the United Nations conference at San Francisco. Dr. Dillin was in Europe just prior to World War II and is well versed on fascism and nazism. Although he has not announced his topic, it is certain to deal with our international economy and education. The Klamath Union high school's cappella choir, under the direction of Andrew Loney Jr., will also be a feature of the evening. After the program, parents will have the opportunity of visiting the teachers and inspecting the school plant. There is no admission charge and the entire public is cordially invited to attend.

**SECOND THOUGHT**  
SUBLETT, Kas., Nov. 14 (P)—It looked like a warm winter for George Case's car when he bought an abandoned schoolhouse at an auction for \$361. He planned to move it to town and convert it into a garage.

But the car will have to wait. Case decided the building was too good for that and is now remodeling it for a home.

For **Commercial Refrigeration SALES and SERVICE**

See **Karl Urquhart**

**Refrigeration Equipment Co.**  
611 Klamath  
Phone 6455



**Check and Double-check**

Have you ever noticed that whenever two trains pass, freight or passenger, a trainman will signal, with hand or lantern, to the trainman at the rear of the other train?

This is not merely a friendly gesture. Each man makes a careful visual inspection of the other's train while it passes. Then he signals that all is well or that he has spotted some defect.

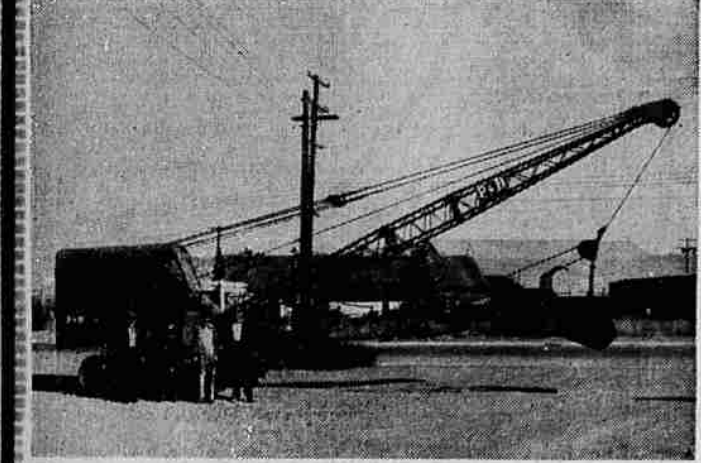
This is just one phase of a continuous "check and double check" system. All Union Pacific

trains are thoroughly inspected before leaving terminal points... all station agents check each train as it passes. Even track crews, along the right of way, are alert to spot any sign of trouble.

Thus, Union Pacific trains are checked time and time again as they transport passengers and freight over the Strategic Middle Route, uniting the East with the mid-West and the Pacific coast.



## The New P & H Dragline



With **Hydraulic Control**

$\frac{3}{4}$  **Yard**

MACHINE PICTURED SOLD TO PALMER AND HAYES, LOCAL CONTRACTORS

Also  $\frac{1}{2}$  -  $\frac{3}{4}$  -  $1\frac{1}{2}$  Yard

**SHOVELS and DRAGLINES NOW AVAILABLE**

DISTRIBUTED BY **LOGGERS and CONTRACTORS MACHINERY COMPANY**

732 S. 6th St. Ph. 6222

**YOU HAVE BEEN WAITING 4 YEARS TO SEE THIS CAR!**

ON DISPLAY SATURDAY **NOVEMBER 17th**

**WATCH THIS SPACE!**