

FLEET TO BE BERTHED IN PUGET SOUND

WASHINGTON, Oct. 23 (AP)—The largest part of the navy's reserve fleet on the Pacific coast is to be berthed in Puget Sound, Rep. De Lacy (D-Wash.) announced today.

"Senator Magnuson (D-Wash.) and I saw (in this decision by the navy) some results of our joint work to bring the navy north," De Lacy told reporters. "The biggest battlements, he said, will be berthed at Sinclair Inlet, just beyond Bremerton. Tacoma will get 'a share' of the airplane carriers.

The real meaning of this decision, he said, is in the amount of repair and maintenance work that will be necessary on these big ships.

"It's a sign of naval recognition and a great step toward our program for a greater share of the navy in north Pacific waters."

At Bremerton, he said, will be three battleships, five heavy cruisers, 10 light cruisers, eight big flattops, four small flattops, three repair ships, four seaplane tenders, nine small seaplane tenders, two floating workshops, one aviation supply ship, two

Political Parties In Argentina Restored

BUENOS AIRES, Oct. 23 (AP)—A 1943 decree dissolving all existing political parties in Argentina has been revoked by the Argentine government, permitting resumption of political activity within the limitations imposed by the state of siege.

The revocation order presumably was a preliminary to the general elections promised for next April.

HIGH SCHOOL PRESS CONFERENCE SLATED

UNIVERSITY OF OREGON, Eugene, Oct. 23—After a two-year recess caused by the war, the annual Oregon high school press conference will again be sponsored by the university school of journalism, and has been tentatively scheduled for November 24, according to George S. Turnbull, acting dean of the school of journalism.

Staff members of the various high school publications will participate in discussions of the high school paper and its problems, and will be guests of honor at a luncheon during the nineteenth annual conference.

ocean tugs and six self-propelled barges.

At Tacoma 30 small flat tops and two harbor tugs will be berthed.

Fined \$1000 In Killing



Lt. John J. Lynd, shown with his wife, Janet, was fined \$1000 and put on seven years' probation in Los Angeles superior court when he admitted fatally beating the man he suspected of making love to Mrs. Lynd. Lt. Lynd, of the merchant marine, pleaded guilty to a charge of manslaughter. The man killed was Benjamin J. Sullivan. (AP wirephoto).

MICHIGAN HEADS JOBLESSNESS LIST

PORTLAND, Ore., Oct. 23 (AP)—The U. S. employment service today classified the Portland-Vancouver, Wash., area as one with "a substantial labor surplus."

Other northwest cities in this class included Seattle-Bremerton and Tacoma. There are 56 such areas in the country.

Included in the 53 areas in group two, with "labor supply and demand in balance" was Spokane.

Michigan headed the list in group 1, with five cities in the classification denoting a "large volume of joblessness."

Areas in group four, where "relatively stringent" labor conditions exist included Sacramento, San Jose and Stockton, Calif., and Salt Lake City.

Stromberg-Carlson Radios, Derby's Music Co.

PILE RELIEF THIS QUICK
Simple piles need no surgery and torture you with maddening itch, burn and irritation. Stuart's Pyramid Suppositories bring quick, welcome relief. Their grand medication means real comfort, reduces strain, helps tighten relaxed membranes, gently lubricates and softens. Protective and anti-chafing, so easy to use. Get genuine Stuart's Pyramid Suppositories at your drug store without delay—50c and \$1.20—no maker's money-back guarantee.

OPA Brings Suit Against Shore Club

ASTORIA, Oct. 23 (AP)—An OPA suit in Clatsop county circuit court seeks to prevent the Shore Club, Seaside, from overcharging on coffee and mixed drinks.

Cecelia P. Gallagher, OPA enforcement attorney, accused the club of charging 20 cents per pot for coffee instead of 5 cents listed in the price scale, and 30 instead of 20 cents for mixed drinks. The complaint said the club asked 90 cents for a champagne cocktail—40 cents above the ceiling price.

Portland Traffic Toll Stands At 52

PORTLAND, Oct. 23 (AP)—This city counted its 52nd traffic fatality Monday with the death of Clayton Cole, 67, fatally injured when struck by a car Sunday night.

Officers charged Mrs. R. L. Lyon, 37, the driver, with negligent homicide and set bail at \$1500. Police said her auto struck Cole, a pedestrian, as it made a left turn.

Mrs. Vera Crouch, 40, walking with Cole, also was injured.

SECESSION THREAT
Upper section of Wisconsin is threatening to secede from the state and join either the upper Michigan peninsula or Minnesota. Dissension is caused by new Wisconsin anti-gambling laws.

HIGH SCHOOL

News Notes and Comment

By JOAN O'NEILL

KUHS was infested with old Rome today when the Latin club initiated new members. The students joining the club were clothed in sheets draped as togas which was the national garment worn by the Romans. They also wore wreaths upon their heads with the girls piling their hair in an upsweep that was the vogue in Caesar's day, too. Sandals were worn as foot gear. The students were at the beck and call of the older members of the club, who were designated by gold arm bands, and the initiates were required to bow three times and say "Hail Caesar" to every Latin club member they met.

The whole club was scheduled to eat their lunch on the side lawn of the school if the weather permitted. Tonight the more formal part of the initiation will be held at the Teen-age club, which has been appropriated for the occasion. The Teen-age club is not in use any night but Wednesday and Saturday.

Club initiations seem to come at a central time around the school for tomorrow will be the Hi-Y initiation.

Halloween Party at TAC
There is going to be a big party down at the TAC this Saturday night which will boast the Halloween theme. The club is closed all this week to allow

the decoration committee to pretty up the club.

The committee is planning a lot of fun so be sure to drop in. It is a sort of special night so you might want to get a date for the affair, but by no means do you need one. Incidentally, if any of the parents or interested adults would like to see the goings on at the TAC, they are invited to look in one of the nights that it is open.

Farmers May Close Lands To Hunters

MEDFORD, Oct. 23 (AP)—Farmers in this area may close their lands to hunters because of damage to stock and crops, State Game Commissioner Kenneth Deaman said today.

Deaman reported sportsmen leave farm gates open and allow dogs to chase stock. One orchardist reported D'Anjou pears shot full of pellets by hunters.

FANNING'S Richfield Service

1102 E. Main

Is Again Operated by John Fanning

- Expert Mechanical Work
- Motor Tuneup
- Lubrication

We Will Call For And Deliver Your Car

—Telephone 6452—

Oregon City Woman Dies From Burns

OREGON CITY, Oct. 23 (AP)—Mrs. Lulu Madeline Boyd, 65, died Sunday from burns re-

ceived when her clothing caught fire, Coroner Ray Rillance said today.

She evidently was lighting a fire in a heating stove when the accident occurred, he said.

You'll never know how good Cream of Tomato Soup really is until you've tasted

Heinz

It's Condensed—One tin of soup plus one tin of milk or water makes four portions delicious soup!

57

RUNNING WATER

Dependably - Economically Silently... with this

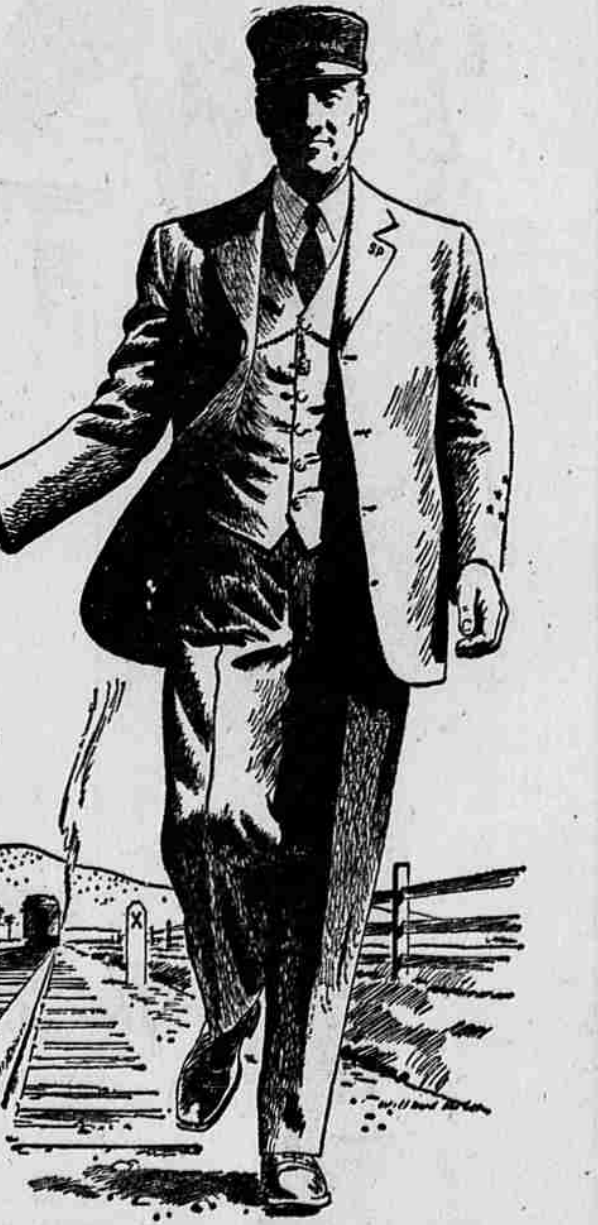
NEW F&W WATER SYSTEM

No belts, no gears, no pulleys in this totally new type centrifugal pump. Fewer moving parts; simple, rugged construction mean longer life, trouble-free service, lower operating cost. Streamlined for greater efficiency; big capacity in small units. Come in, see this remarkable new F&W water system. It brings you running water where you want it, when you want it—dependably, economically, silently!

A GOOD SUPPLY OF THESE PUMPS NOW ON HAND AT

Samson Implement Co.

2424 South 6th St. Klamath Falls



"SAFETY MAN"

"Safety" is every railroader's watchword; maintaining it is his number one duty.

But to many, one trainman particularly symbolizes safety: the passenger train brakeman...the "flagman."

Like a football safety man, this S.P. safety man stays far in the backfield. Even during an ordinary station stop, he drops back thirty feet behind the last car. On unscheduled stops, he must immediately go back far enough to insure protection for his train.

He places "torpedoes" on the track and waits on guard—with flag or lamp—until the train is set to go: When a whistle signal recalls him, he leaves behind a burning "fusee"—a bright red flare that burns for ten minutes (even when wet) to caution following trains.

But all this is just one of our safeguards. There are also amazing mechanical watchdogs (such as automatic block signals, Centralized Traffic Control and Automatic Train Control) and such safety measures as regular track and equipment inspection, physical examination of trainmen, double-checking of train orders, and regular inspection of all trainmen's watches.

With all this backing him up, the brakeman has helped make trains the safest way to travel. You're

actually safer on a train than in your own home! The brakeman is a key man on our Southern Pacific team—one important key man among the thousands of experienced railroaders who guide and guard every train on every mile of its run.

S-P The friendly Southern Pacific

TOP O' THE TANK FERMENTATION GIVES

Columbia Ale

IT'S UNUSUAL, DISTINCTLY-DIFFERENT

TOP O' THE TANK

Texture

Just as you can feel the fine texture of silk so can you taste the lighter, more-delicate "Top o' The Tank Texture" of Columbia Ale.

Copyright 1945 COLUMBIA BREWERIES, Inc., Tacoma, Wash.

If you are one of the many thousands who enjoy Columbia Ale, but have wondered how it got its delightfully different "texture," perhaps we can explain.

A completely different method of fermentation is employed in the brewing of Columbia Ale. A highly-cultured, unusual-acting type of surface or "top" yeast, is used to activate the brew. Unlike other yeasts, this variety floats buoyantly at the top of the tank and the fermenting action is downward from the top, rather than upward from the bottom.

This distinctly different method of fermentation results in the distinctly different "texture" of Columbia Ale, the lighter, smoother, more delicate "Top o' The Tank Texture" which so many enjoy but find difficult to explain.

If you are not among the thousands who enjoy this unusual beverage try a bottle today. Sip it at your favorite tavern, or take a few bottles home. You'll find it delightful before, or with, dinner, on summer outings, or at bedtime. Your guests will enjoy it, too.

All taverns, beverage stores and grocers carry it for your pleasure.

Columbia Ale

...with the **TOP O' THE TANK** Texture

AVAILABLE AT YOUR FAVORITE TAVERN OR GROCER'S