

EXPERTS WARN HOME CANNERS SACCHARIN USE

The Klamath county home-maker is still warring with the problem of sugar shortage, according to Mrs. Winifred K. Gillen, home demonstration agent. Some women have investigated the possibility of pickling with saccharin, because the sugar ration simply will not allow enough of the precious stuff for pickle-making. It is possible to use saccharin for pickling, says Mrs. Gillen, and saccharin may even be used in canning fruits, but experts do not recommend its use generally.

Warns on Use
Miss Lucy Case, Oregon State college extension nutritionist, has passed along several opinions on the use of saccharin, indicating that small doses of this non-nutritious sugar substitute appear to produce no ill effects, but larger doses, such as 1.5 gm., daily may cause gastrointestinal disturbances. In some cases, experts warned that the use of saccharin may give fruit a bitter flavor, while in others it was suggested that the sweetener be used just before serving the product.

Recipes Told
In no case will the texture of the food canned with saccharin be as good as that canned with sugar. For homemakers who wish to make relishes and fruit butters despite the sugar lack, the home demonstration agent's office has selected a group of low-sugar, or no-sugar, recipes which may be obtained upon request. The group includes directions for making mustard tomato catsup, a chili sauce using only 1/4 cup of sugar, pumpkin, squash, or carrot butter, using light molasses, muskmelon butter, with only a cup of sugar, and others. The home demonstration office is located in room 208, federal building, and may be reached by telephoning 6151.

MALIN BERRY PARTY VISITS MOUNTAIN

MALIN — Sixty gallons of huckleberries, picked by a group of women of the Ladies' Aid of the Malin Presbyterian church who spent several days at Huckleberry mountain, were brought home to be canned when the travelers returned via truck furnished by Harry Wilson.

Picking was slow as usual but berries were plentiful and those who went to rest instead of work bought berries from others on the grounds to make a bit of money in that way. Among the pickers was Alice Hamilton, old time Klamath resident, who was at the patch this year with a horse and buggy. She has picked each season for 50 years. She was a schoolmate of Mrs. Harry Wilson when both attended school in Linkville. The party, which returned Saturday, included Mrs. Harry Wilson, Mrs. Bertie Shogren, Mrs. George Fabianek, Mrs. A. E. Street, Mrs. Charles Johnson, Mrs. George Smalley, Esther Morton and Lois Morton. Others from this section of the county going up for brief trips were Mr. and Mrs. Halbert Wilson, Mr. and Mrs. Lewis Kandra, Merrill; Mrs. Emmeline Fitzpatrick, Klamath Falls; Mr. and Mrs. William Graham, Mr. and Mrs. Noah Nyhart, Mr. and Mrs. John McCulley, Mr. and Mrs. Jack Ratliff, Jr., all of Malin; Mrs. Charles Maupin, and Evan Maupin, Ashland.

After the summer of 1849, it was said that the trails across the western deserts were easily followed, marked by discarded dry bones of animals, newly marked graves, and other signs of the Gold Rush trails.

Tractors Move Off Assembly Line



Tractors move off new assembly line at the Highland Park plant of the Ford Motor company. Small tanks and bomber parts were made there during the war. (AP wirephoto).

Crop Insurance Urged For Klamath County Farmers

Federal crop insurance is not only important to Klamath county from the standpoint of immediate protection for wheat crops. Its greatest import locally lies in the provisions of the federal crop insurance act, that a successful wheat cover crop insurance program may lead to a general crop insurance program which will cover our major crops as well, the county AAA office said today.

Need Seen
Successful farmers have long recognized their need for low cost insurance for all crops. It is now possible that such insurance will be offered for all grain, hay, potatoes and vegetables and all seed crops. It would cover potatoes, barley and alfalfa clover seed which are the country's main cash crops.

In Klamath county 50 applications for winter and spring wheat must be filed before September 29 if their program is to be in effect for winter wheat.

Details Told
To apply for federal wheat insurance a farmer needs only to

DAMAGE SUITS FILED IN CIRCUIT COURT

Three damage suits in the sum of \$21,000.85 have been filed in circuit court against M. M. Wanser and June Wanser by Shirley Carnes, Rosetta Highley, and E. C. Highley.

This action grew out of an automobile accident on January 20, 1945, on Summers lane at which time a car driven by June Wanser and owned by M. M. Wanser struck an automobile in which the three plaintiffs were riding. U. S. Balentine is representing the plaintiffs in the case.

Claims Made
The plaintiffs claim that the automobile driven by June Wanser was traveling at an excessive rate of speed, had only one headlight, and was on the wrong side of the road at the time of the crash.

Shirley Carnes assertedly fractured her lower left jaw, suffered bruises and lacerations to her body, and required extensive medical treatment. She asks \$15,000 damages for personal injury.

Rosetta Highley asks \$1000 damages for injury to person and \$99.85 for damages to the automobile and E. C. Highley asks \$3000 damages for cuts, bruises and lacerations sustained in the accident.

Classified Ads Bring Results.

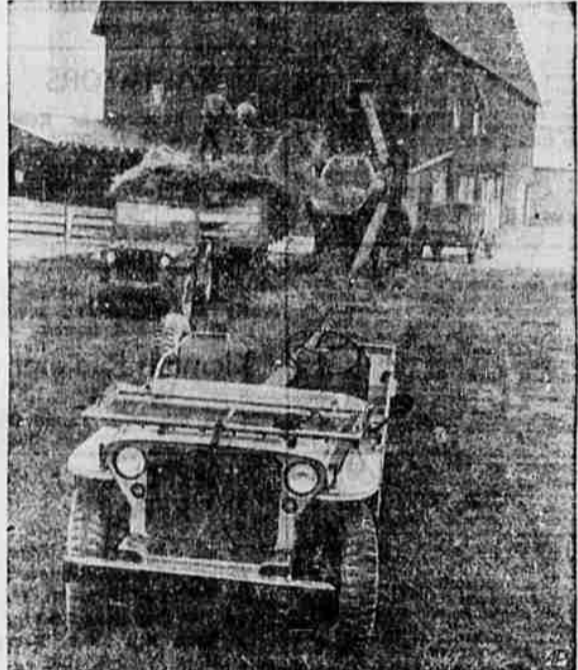
GRAIN HARVESTING BEGINS IN BASIN

Barley harvesting in the Klamath basin has commenced now with fair to good crops reported. Most of the early barley harvesting work is being done south of Klamath Falls, with general grain harvesting in progress in the Tulelake district.

Wheat harvesting has been going on in the basin for the past two or three weeks, with good crops reported generally. Haying is continuing in the district with the best crops in years reported, due to abundant May rains.

Full details will be provided at the local AAA office or by any of the agents appointed for each farming community.

Classified Ads Bring Results



JEEPS ON FARM — Two Jeeps, especially adapted for peace-time use, go to work in a farm demonstration. Vehicle in foreground serves as power unit for threshing machine, while Jeep in rear is ready to haul the wagon.

ENROLL NOW!
For Fall Classes, Beginning Sept. 4.
Klamath Business College
733 Pine St., Corner 8th Phone 4760

TESTS NEEDED FOR HEIFERS GOING TO FAIR

County Agent C. A. Henderson said today that state law requires all dairy heifers over six months of age be tested before they can be brought to any fair within the state.

To date, only a small number of 4-H club members in the dairy projects have indicated that they are going to bring their calves to the show. Undoubtedly many are planning to bring their calves but have neglected to notify the county office, thereby making it impossible to secure an official test for Bangs disease before the show.

All club members who have not notified the office of their intention to exhibit dairy heifers over six months of age should do so at once in order that a date can be made to have them tested. The same regulation applies to breeding beef heifers over six months of age.

aging over 600 pounds live-weight and sold for at least \$14.95 a hundred.

Feed Wheat Plan Ended August 15

The County AAA committee has received notice that Commodity Credit's feed wheat program was terminated August 15. Shipments will be made on confirmed orders received before that date, but no more orders will be accepted. Provision is being made to supply mixers with feed wheat temporarily at Portland terminal prices plus freight.

Last year, 4,215,434 bushels of feed wheat were sold to Oregon feeders and dealers, according to state AAA office figures.

MORNING AFTER!
NEW YORK, Aug. 23 (AP)—Women screamed and men jumped yesterday to see a five foot snake slithering along the pavement at Sixth avenue and 42nd street.

Police—at a loss to know where the reptile came from—dispatched it. It was non-poisonous.

Thursday, Aug. 23, 1945 HERALD AND NEWS—THIRTEEN

AAA OFFERS AID PRODUCERS NEEDS

Livestock and poultry producers should place their orders immediately for any protein supplements they will need next winter, Ted Winwood of the AAA office stated. Present indications are that the supply of protein supplements will again be short. Transportation difficulties and labor shortages are expected to continue through the coming season, making it difficult to secure needed supplies.

The set-aside provisions in use last year are not in effect at the present time. Producers should make every effort to purchase protein supplements through the usual dealers and regular trade channels and to do so early. Those having difficulty in obtaining such supplies may contact the local AAA office for any assistance that may be necessary.

One of the tiniest ball bearings in the world—2.7 millimeters in diameter—is a vital part of the Norden bombsight and other delicate aviation instruments.

Stetson Hats
for Fall
arriving daily in the new colors of Alpine, Pine, Willow and Mocha, in the new Victory style.
They Are Beautiful!
\$7.50 & \$10.00
Stetson dealers for 26 years.
Since 1918
DREW'S
MANSTORE
733 Main St.

Farmers Attention!
We kill, dress and chill your hogs—3/4c per pound.
We cure and smoke your ham and bacon—5c per pound.
We have the best facilities. Our work is guaranteed. WHY PAY MORE?
JOHNSON PACKING CO.
THE HOME OF QUALITY MEATS
PHONE 5323

Walgreen
YOU'RE ALWAYS WELCOME AT WALGREEN'S DRUG STORES
7th & Main St.
RIGHT RESERVED TO LIMIT QUANTITIES

Handy Handy! Steel 10¢ POT CLEANER With Coupon 5¢ At Walgreen's (Limit 2)	15c Size KRENEL HAIR TONIC Grooms The Hair 69¢ (Limit 1)	10c Size MERCURO-CHROME For First Aid—1/4-ounce 6¢ (Limit 1)	15c Cake STORK CASTILE Pure Baby Soap 2:19¢ (Limit 2)	\$1.50 Size ANUSOL Suppositories Box of 12 76¢ (Limit 1)
15c Value RUBBER BALL Red & Blue 9¢ For kiddies.	Quick Relief From pain due to headache, neuralgia, muscular aches or that "certain day". Try... CERADYNE 20 tablets . . . 35¢	10c Jar SHOE POLISH Atlas Brand 5¢ Black, brown.	Bottle 200 ASPIRIN TABLETS Finest You Can Buy 49¢	25c Tube ZINC OXIDE OINTMENT Soothing, Healing 14¢ (Limit 1)
25c Size CUTICURA OINTMENT Soothes the Skin 15¢ (Limit 1)	6-oz. Size FITCH'S SHAMPOO Saponified Oil Type 47¢	Cartridge 20 SCHICK BLADES For Injector Razors 69¢	Light-Weight ROOMY 18" ZIPPER BAG Water-repellent canvas. Colors . . . dark blue & rust . . . 3.65 Plus 20% Fed. Ex. Tax	60c Size ZONITE ANTISEPTIC For Feminine Hygiene 47¢
\$1 Size WILDROOT CREAM-OIL Formula For Hair 79¢	Nupercaine in BLUE JAY PLASTERS For Little Toe Corns 23¢	Wear A "Spiffy" COLLAR HOLDER 25¢ Invisible, helps keep collar neat	HAY FEVER? Nosal Conjection? HAY FEX INHALER Safe and effective . . . 1 Quickly relieves.	50c Size Mennen POWDER For Babies 39¢
8-oz. Size MILES NERVEINE Mild Sedative 83¢	Giant Size COLGATE Tooth Powder Brightens Teeth 37¢	30 CAL-RINEX Capsules Quick relief . . . 89¢ ESTIVIN DROPS For hay fever, tonsil fever . . . 98¢ HISTEEN TABLETS Provide relief. 40 for . . . 89¢ HAYFEMA CAPSULES Easy to take. 15 for . . . 51 DUO-HALER OUTFIT Nearly invisible. Complete 51 USE SINASIPTEK Clears nasal mucus. 6-oz. 93¢	Cleaning Need ENAMELED DUST PAN 42¢ In red or blue. Sturdy handle.	1-oz. Size ZINC STEARATE Powder 18¢
			Really Polishes HOUSEHOLD CHAMOIS 89¢ 1-piece, 17"x23". High quality.	Economy Size 54 KOTEX NAPKINS Deodorant Added 89¢
			An Everyday Stationery Need PKG. of 20 ENVELOPES With Coupon, 2 for 6¢ AT WALGREEN'S (Limit 3 packages)	

10% Federal Excise Tax on Toilettries and Lighters

EMPIRE...the high test GYPSUM

Manufactured by Pacific Portland Cement Co. Apply after cutting alfalfa and clover. See us about your soil's chemical problems.

Sold and distributed by

Tulelake Machinery Co.

TELEPHONE TULELAKE 2841