

WAVE CARRIER TO BEAR NAME OF ROOSEVELT

WASHINGTON, April 26 (AP)—The 43,000-ton vessel, sister of the Midway launched at Newport News, will be sponsored by Mrs. Roosevelt.

The unprecedented move to name the carrier after the late president for his long association with the navy assigned the name of the carrier to the name of an individual.

The vessel originally was named the "Coral Sea," recognition of the battle which occurred in that area in May, 1942.

It was the battle that effectively checked the Japanese in their southward drive and toward the end of the period which the United States was totally on the defensive.

Spokane Hotel Sold to Seattle Operator

SPOKANE, April 26 (AP)—William E. Davenport has purchased the Davenport hotel here for a cash consideration described by Thomas A. Gilder, manager of Seattle Olympic hotel, as "in excess of \$1,000,000."

E. D. Etris operates the Olympic hotel.

Louis M. Davenport, manager of the Davenport here, said Etris will take possession of the hotel.

Earl Will Return to Home After Absence

ALEM, April 26 (AP)—Governor Earl Snell will return to his home tonight after a week's absence, during which he attended the conference of western governors in Reno, Nev., and today's opening of the United Nations conference in San Francisco.

President of the Senate Howard C. Belton, Canby, has been elected governor.

Yank Risks Life to Save Child Under Nazi Fire

By HAL BOYLE
WITH THE U. S. FIRST INFANTRY DIVISION, (AP)—A small, pig-tailed German girl stood frightened in the middle of a shell-swept street, and to a New Jersey corporal she was just a kid in danger and he risked his life to save her.

Because he was wounded his name may not yet be used.

The girl was one of a group playing in a Lichtenberg street just after 16th regiment doughboys had captured the town.

Headless that the town was filled with German civilians the nazis panted it with a savage barrage of mortar and artillery shells. From a vantage point just outside, a self-propelled gun raked the street with shells and machine gun fire.

The screaming children ran to cellars. All except the little girl who stood helpless with terror.

A German mortar shell hit a few yards from her. Steel fragments ripped through her legs and the youngster fell to the ground, her screams drowned out by the blasts of shells falling nearby.

The young corporal saw her fall. He could hear the deadly machine gun bullets zinging down the street. Without hesitation he dashed out to the child.

As he ran from the shelter of a building, another shell burst near the girl and fragments struck the American in the face and chest.

He fell, but slowly regained his feet, blood streaming into his eyes and blinding him so he had to grope to reach the child.

She was unconscious when he reached a combat first aid station, carrying her in his arms as he staggered through the bullet-plowed street. Then he collapsed from shock and loss of blood.

Nisei Awaits Report On Physical For Draft

AUBURN, Calif., April 26 (AP)—Sumio Doi, 26, Japanese-American rancher and first nisei to be released from the Amache, Colo., relocation center, today is awaiting a report on a pre-induction physical examination taken Tuesday at Sacramento.

Doi was the principal prosecution witness in the trial of three men who were acquitted this week on charges of arson and illegal use of dynamite. The trio was arrested after efforts had been made to burn and dynamite a fruit packing shed on Doi's ranch.

Grand Central Terminal in New York City handled more than 60,000,000 railroad passengers during the past year. More than 500 trains enter or leave the terminal, which with its auxiliary buildings covers 48 acres, daily.

Coast guard fliers have searched more than 90,000,000 square miles of sea on anti-submarine patrol since the bombing of Pearl Harbor, December 7, 1941.

Grand Central Terminal in New York City

Grand Central Terminal in New York City handled more than 60,000,000 railroad passengers during the past year. More than 500 trains enter or leave the terminal, which with its auxiliary buildings covers 48 acres, daily.

Coast guard fliers have searched more than 90,000,000 square miles of sea on anti-submarine patrol since the bombing of Pearl Harbor, December 7, 1941.

Classified Ads Bring Results.

Grand Central Terminal in New York City handled more than 60,000,000 railroad passengers during the past year. More than 500 trains enter or leave the terminal, which with its auxiliary buildings covers 48 acres, daily.

Coast guard fliers have searched more than 90,000,000 square miles of sea on anti-submarine patrol since the bombing of Pearl Harbor, December 7, 1941.

Classified Ads Bring Results.

★
BOTANY
and CHENEY
TIES
\$1.00 to \$3.50
RUDY'S
600 Main

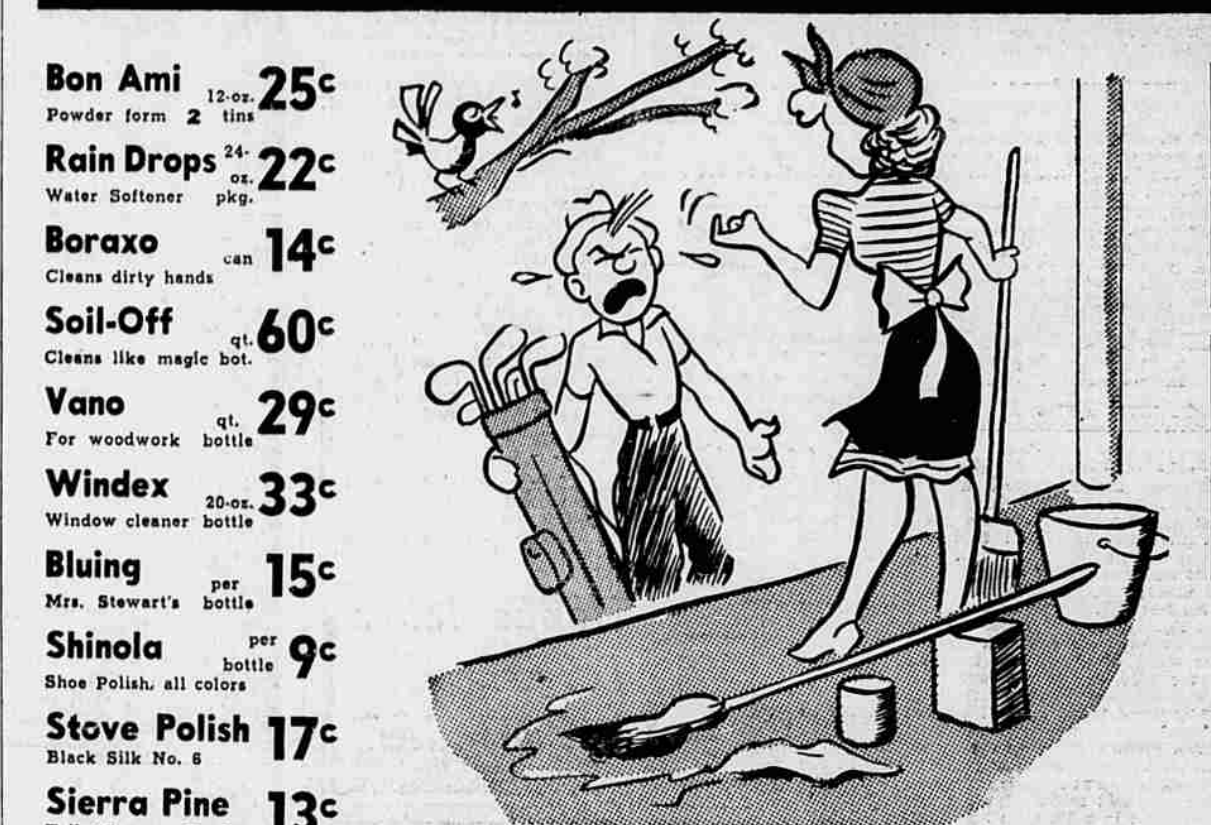
Thursday, April 26, 1945

HERALD AND NEWS—NINE

★ NOW OPEN ★
THE WINEMA HOTEL
GRILL
(Under New Management)
HOURS: 6 A. M. TO 10 P. M.

SAFeway Homemakers' Guide

SPRING CLEANING is always much easier when you have the proper equipment. Load up on supplies at your Safeway—Now!



- Bon Ami 12-oz. Powder form 2 tins 25c
- Rain Drops 24-oz. Water Softener pkg. 22c
- Boraxo 14c
- Soil-Off qt. 60c
- Vano qt. 29c
- Windex 20-oz. Window cleaner bottle 33c
- Bluing Mrs. Stewart's bottle 15c
- Shinola per bottle 9c
- Stove Polish 17c
- Sierra Pine 13c

- Sunbrite Cleanser Per Can 5c
- Dry Cleaner AUNT SUE'S Easy—Do It Yourself Gal. Can 75c
- White King TOILET SOAP 3 Cakes 14c

WHITE MAGIC Bleach Easy on the hands qt. 10c

PUREX Bleach and qt. 14c De-odorizer

Laborlite (Blue) Cleans walls, woodwork—lightens labor. lb. pkg. 21c

KE-NU Cleaner Makes 2-lb. pkg. Curtains sparkling white. 28c

- Tomato Juice Libby's No. 2 can (10 B.) 11c
- Tomato Juice Sunny Dawn No. 2 can (10 B.) 10c
- Apple Juice, New West qt. glass 25c
- Grape Juice Church's Bottle (20 B.) 17c
- Corn COUNTRY HOME Cream Style, G. B. No. 2 can (20 B.) 14c
- Corn DEL MAIZ Niblets 12-oz. can (20 B.) 14c
- Potted Meat Libby's No. 34 can (1 R.) 6c
- Veal Loaf Morrell's 11-oz. can (3 R.) 29c
- Kraft Dinners 2 pkgs. for 1 red point pkg. 9c
- Cheese Sheppard's American 2-lb. loaf (20 R.) 75c

Leaves Hands Soft and Smooth

RAIN DROPS
The Sky-Blue Powder
AMERICA'S WASH WORD

Margie Says
IT'S A DELICIOUS SPREAD FOR BREAD!

Durkee's TROPIC BUTTER
MILD SWEET COUNTRY FRESH IN FLAVOR

PASTEURIZED SKIM MILK ADDS TO ITS GOODNESS

- Whole Bean Coffee Is Roaster Fresh Coffee!
- Airway 3-lb. bag 58c
- Nob Hill 2-lb. bag 45c

Palmolive TOILET SOAP Bath Size 2 for 19c

Lifebuoy Health Soap 3 cakes 20c

Krispy Soda Crackers 2-lb. pkg. 33c

FARM-FRESH PRODUCE

Our buyers bring the finest fresh spring produce that's on the market, at money-saving prices. See for yourself—at Safeway!

Honey Sweet, juice-filled Navel

ORANGES

5 lbs. 49c
1/2 box \$3.39
Full box \$6.69

Full of Vitamins, Too!

- Grapefruit Arizona-California Desert Fruit Lb. 9c
- Local Rhubarb Field-Grown Fine for Pies Lb. 8c
- Red Ripe Tomatoes From Southern Fields Lb. 25c
- Artichokes Fresh Green Leaves Lb. 23c
- Asparagus Tender All the Way 2 Lbs. 29c
- Local Spinach Local Crop Celophane Pkg. 12-Oz. Pkg. 24c
- New Green Peas Tender and Sweet Lb. 15c
- Hothouse Cucumbers Lb. 37c
- Celery Tender, Crisp Green Utah Type Lb. 17 1/2c
- Green Onions Mild and Tasty 2 Bun. 19c
- Dry Onions Yellow Danvers Lb. 7c
- Parsnips Smooth Even Sized Lb. 8 1/2c

- Edwards Coffee, drip or reg. 1-lb. glass jar 28c
- Chocolate Malted Milk, Borden's 1-lb. jar 26c
- Canterbury Tea ORANGE PEKOE box of 16 bags 13c
- Vanilla or Lemon WESTAG (imitation) 4-oz. bottle 7c
- Mrs. Wright's Bread 1 1/2-lb. loaf 2 for 25c
- Ritz Crackers 1-lb. package 19c
- Pancake Flour, Suzanna 3 1/2-lb. pkg. 19c
- Apple Butter, Libby's No. 303 jar 21c
- Guava Jelly 2 1/2 tin 29c
- Fisher's Zoom, Instant Cereal 20-oz. pkg. 20c
- Kellogg's Corn Flakes 18-oz. pkg. 13c
- Chopped Olives, Libby's No. 1/4 tin 13c

GUARANTEED MEAT

Little Pig Sausages Type 2 (6 pts.) lb. 46c

- Minced Luncheon Meat, A. C., (6R) Lb. 37c
- Assorted Luncheon Loaves, Type 2, (4R) Lb. 48c
- French Head Cheese, (2R) Lb. 43c
- Polish Sausage, Type 2, (5R) Lb. 39c
- Weiners, Skinned, (6R) Lb. 37c
- Pork Sausage, Bulk, Type 2, (6R) Lb. 39c
- Fresh Oysters Pint 65c
- Salmon Sliced Lb. 43c
- Fresh red mated King Salmon. Troll Caught.

LAMB

- Breast of Lamb Lb. 19c
- Shoulder Roast Lb. 34c
- Leg of Lamb Lb. 38c
- Shoulder Chops Lb. 37c
- Loin Chops Lb. 35c
- Rib Chops Lb. 43c

Fresh Razor Clams In the Shell lb. 25c
Cleaned, lb. 89c

Fillet Ling Cod Fresh Lb. 42c

Fresh Fillet Sole Petrali Type Lb. 42c

NATURAL Golden color vitamin C

MARK EACH JUICY-RICH

Desert Grapefruit

From the Arizona-California desert comes fruit full-tasting with tangy juice... golden segments brim with vitamin C.

In fact, just half a luscious Desert Grapefruit provides primary supply of this all-important vitamin.

Brighten up your breakfast with the bracing goodness of Desert Grapefruit.avor noontime salads with sun-gold segments. When ripe, enjoy cool glassfuls of fresh Desert Grapefruit.

DESERT
FROM ARIZONA-CALIFORNIA

Everybody Loves Them!

Kellogg's CORN FLAKES

THE GRAINS ARE GREAT FOODS—As Kellogg

Kellogg's CORN FLAKES

Kellogg's Corn Flakes bring you all the protective food elements whole grain declared essential man nutrition.

SAFeway