

60,000 JAPS MAY RETURN TO CALIFORNIA

SACRAMENTO, April 6 (P)—The closing of camps for Japanese evacuees from the Pacific coast next January 6, as ordered by the war relocation authority, probably will mean the return of about 60,000 Japanese, state Sen. George Hatfield of Merced county predicts.

Senator Hatfield made his comment during debate late yesterday on a resolution asking congress to compensate California counties and cities for aid given indigent Japanese freed from the evacuee camps.

The state's share, Hatfield said will be about 40,000 and many will be indigent. Their support, he argued, should be the burden of the federal government.

Senator Irwin T. Quinn, Eureka, opposed the resolution because of fear it would be interpreted in Washington as an invitation to return the Japanese to this state.

"They're out now and we want them to stay out," he said.

The resolution was referred to committee for amendments.

A material scaling down of the authority and scope of the proposed state aeronautical survey was recommended to the assembly transportation and commerce committee today by a subgroup.

The revisions the subgroup would strip the proposed state aviation commission of all regulatory powers now exercised by federal agencies, leave policing of the industry to federal agencies and eliminate state licensing of pilots and aviation schools.

Carrying the O.K. of the public morals committee, legislation reached the assembly second reading file today reducing the penalty for bookmaking from a felony to a misdemeanor.

28 YEARS AGO U. S. ENTERED WORLD WAR

WASHINGTON, April 6 (P)—Today is the 28th anniversary of the United States' entry into World War I.

House approval of a war resolution by a 373 to 50 vote a few minutes after 3 o'clock on the morning of April 6, 1917 put the nation into that conflict.

The senate had adopted the resolution the night before by an 82 to 6 vote.

Germany's ruthless submarine warfare against American ships earlier had prompted this country to sever diplomatic relations with Berlin. Then, addressing congress in a dramatic night session on April 2, President Woodrow Wilson said:

"I advise that the congress declare the recent course of the imperial German government to be in fact nothing less than war against the government and the people of the United States . . ."

Valleys Assured of Better Water Supply

BURNS, April 6 (P)—Soil moisture conditions and mountain snows indicate the Harney and John Day valleys will have a much better water supply this year than last, irrigation experts said today.

The annual water forecast predicted a fair to good supply for the area this season. Last summer, only heavy June rains prevented crop failure.

That's Swell



Here are two pictures of one of the many youngsters who went into the Shrine hospital at Portland as a cripple, and came out normal. The picture above shows the boy in braces at the hospital. The other picture was taken the day he walked out of the institution, a changed boy. Klamath people can help this great work by buying tickets for the Shrine benefit dance to be held Saturday night at the armory.

CHAIRMAN THANKS BENEFIT WORKERS

Chairman H. E. Jones of the Shrine dance benefit for the Portland crippled children's hospital today issued a statement warmly thanking the community and all who have helped promote ticket sales for this event.

"Everybody has gone all out for this cause," said Jones. He mentioned, in particular, the press, radio, committees, Daughters of the Nile, as well as the general public.

The dance will start at 8:30 p. m. at the armory Saturday night. Baidy Evans' orchestra will furnish the music. One of the biggest dance crowds in local history is expected.

Jones said many letters have been sent out containing tickets. Not all of these have been returned, and he asked that replies be made as soon as possible.

ELKS INSTALL NEW OFFICERS AT MEET

Ray Ruger became exalted ruler of the Elks lodge last night in installation ceremonies conducted by L. Orth Sisemore, past exalted ruler.

New elective officers of the lodge are Ruger, exalted ruler; C. E. Seavey, leading knight; Vernon Moore, loyal knight; E. Mullis, lecturing knight; Lester Offield, treasurer; G. W. Houston, secretary; E. B. Hall, trustee; L. F. Hansen, tiler. New appointive officers are Jack Brandon, esquire; John Schubert, inner guard; Stanley Starkey, assistant esquire; Jack Franey, chaplain; W. R. Evans, organist.

The retiring exalted ruler, Jack Linman, made a brief address on the year's activities. The business session followed a birthday dinner honoring members whose birthdays occurred in February and March.

Troller Lost After Striking Rock Ledge

NANAIMO, B. C., April 6 (Canadian Press)—Loss of the 40-foot deep-sea troller Lindora after striking a rock ledge in Nanaimo bay, 27 miles from here on the northeast coast of Vancouver island, was reported yesterday.

The entire crew was rescued by a Nanaimo towing company tug.

The vessel was en route from Seattle to the Alaska fishing banks.

A smaller vessel, identity unlearned, also struck the ledge but managed to free herself and return here for repairs.

Every Day Is
SOMEBODY'S
BIRTHDAY!
We Specialize In
Gifts For Him
RUDY'S
600 Main



200 other MONARCH Foods—all Just as Good!

Fluhrer's

Date Drop Cookies

A rich delicious drop cookie filled with lots of dates and nuts. These cookies are simply a must in any lunch box, and they are ideal for that after school snack. Be sure to place your orders early while our supply is complete.

Apple Turnovers

A rich flaky pie crust filled with lots of fresh apples. These always hit the spot with both young and old, so when placing your orders be sure to include some of these tempting delicacies.

Klamath's Finest Bakery

The War At a Glance

By The Associated Press. The Western front: American first army launched powerful new assault eastward toward Weser river, smashed eastward into Ruhr trap; ninth army, across Weser at numerous points, bore down on Hannover; British drove on Bremer after joining with ninth across Weser; Canadians crossed Nether Rhine near Arnheim; U. S. third reached points 130 miles from Berlin, 58 from Czechoslovak border.

The Russian front: House-to-house battle opened for Vienna as red army stormed into outskirts through curtain of mortar fire; Russians threatened to ring capital with tanks.

The Italian front: U. S. fifth army opened attack on west coast which gained two miles; Germans reported fresh assault.

The Pacific front: Main battle for Okinawa taking shape; resistance increased north of Naha, the capital; U. S. forces of southern Luzon cut enemy escape route to east coast.

BOMBERS RAID RAIL YARDS IN GERMANY

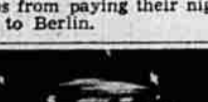
LONDON, April 6 (P)—A force of approximately 650 American heavy bombers escorted by more than 600 fighters today bombed railway yards at Halle and Leipzig, two main traffic centers on the linkup routes for the American and Russian armies.

An eighth air force announcement disclosing the assaults said the main railway station at Leipzig, one of the largest in Germany, was one of the prime objectives.

Other targets in Germany—not immediately identified in allied announcements—also were attacked by Flying Fortresses and Liberators in their fourth straight daylight assault on the reich.

The German radio indicated these targets were in the Magdeburg, Dessau and Chemnitz areas.

There were no major raids on Germany last night, bad weather keeping even the RAF's Mosquitos from paying their nightly visit to Berlin.



200 other MONARCH Foods—all Just as Good!

DIRECTOR TO TALK AT HEALTH DINNER

It was announced at the regular meeting of the executive committee of the Klamath County Public Health Association Inc. held Wednesday, that Mary Jane Greene, health education director of the Oregon Tuberculosis association, will be present at the annual dinner meeting on April 17.

Miss Greene will give details concerning the new mobile X-ray unit which will be in Klamath county early this fall.

The annual dinner meeting of the association is to be held at the First Methodist church on N. 10th and High at 5 p. m. in the church parlors. There will be a showing of health films to which everyone is invited, and the health education chairmen, program chairmen and teachers are extended a special invitation.

Dinner will be served at 6:15 p. m. in the dining room, and at 7:30 a report will be given by the president, Mrs. Robert P. Ellington Sr. Those who are unable to attend the dinner are urged to come at this time.

There will be a short talk on the new social hygiene project given by T. G. Scherer, director of the division of social hygiene of the Oregon Tuberculosis association. Dr. U. G. Dubach, dean of men at Oregon State college will discuss the topic of "Progress Through Teamwork."

The chamber of commerce and Currier's Drugs will handle the sale of tickets.

Lillian Redkey, girls' physical education director at Klamath Union high school will have dinner tickets, as well as membership cards.

If it's a "frozen" article you need, advertise for a used one in the classified.

TRULOVE'S Chicken Center



919 E. Main
Phone 4282

VEAL (No Points)
SALADS!

Visit Our New
Delicatessen

Doctors See Plastic Surgery Demonstrated

VANCOUVER, Wash., April 6 (P)—Northwest physicians and army and naval medical officers today watched demonstrations by Dr. Sterling Bunnell, San Francisco, one of the world's foremost plastic surgeons.

Dr. Bunnell, who opened a four-day clinic at Barnes hospital today, has won medical profession acclaim for his advanced hand surgery techniques. He is consultant to the surgeon general's office of the army.

Insurance Men Join To Form Combination

Paul Lee, Klamath Falls life insurance agent, is now associated with William S. Sheldon, newcomer from Los Angeles, who is manager of the Chilcoote and Smith insurance department.

The offices will be together at 111 N. 9th. Lee will handle life insurance, and Sheldon general lines. Combinations of this type are becoming common in larger cities but are new in Klamath Falls, the insurance men said.

Lee has been in the insurance business here two years. Sheldon came recently from Los Angeles.

SUNDAY April 8th



FOR WHOM
THE BELL TOLLS
in Technicolor
GARY COOPER
JUDITH BERGMAN

PELICAN THEATRE

TRULOVE'S Chicken Center

VEAL (No Points)
SALADS!

Visit Our New
Delicatessen

SEMON SPEAKS AT DEMO CLUB MEETING

Members of the Klamath county Democratic club met Wednesday in the city library at which time Representative Henry Semon spoke on the special election to be held June 22.

Semon said he and Representative B. K. Snyder had fathered the special election bill and said it was considered to prepare a tax measure for carrying on institutions of higher education and a building program.

W. Lamar Townsend spoke on the Dumbarton Oaks proposals and following a resolution introduced by R. C. Woodruff the club went on record supporting the plan.

An open forum will be held soon to discuss the Dumbarton Oaks proposal and the public is invited. Date will be announced later by the committee composed

of R. C. Woodruff, Lamar Townsend and A. A. Montgomery. Mrs. Dora Goddard, president, and B. Z. Smith presided at the meeting.

More than 100,000 people stricken with lobar pneumonia every year in the United States.

SOFTENS WATER, RAIN DROPS



RAIN DROPS
The Sky-Blue Powder
AMERICA'S WASH WATER

THE BEST INVESTMENT YOU CAN MAKE

EYE-CARE

Students!

Eyes Change—
Glasses Don't

Have YOU
Had a
Check-up
Recently?

7 Registered
Optometrists

Dr. Sid G. Noles

COLUMBIAN OPTICAL

SINCE 1905 • EXCLUSIVELY OPTICAL

PORTLAND, 611 S.W. 6th • TWO STORES • KLAMATH FALLS, 228
THAT DEPENDABLE COLUMBIAN SERVICE

SEE BRIAN DONLEVY IN PARAMOUNT'S "TWO YEARS BEFORE THE MAST"

Brian Donlevy has his answers ready!

Ready—set—go! You and Brian Donlevy are "off to the races" in M. J. B.'s popular Coffee Quiz game.

Read each quiz question carefully and pick the answer you like best. When you've finished (and not a second before, please!) look below for the correct answers and Brian Donlevy's score. Could be you're the winner? Could be!

Q. Irving Berlin once wrote a popular song with the title . . .

- "Can't Get Enough Coffee"
- "Let's Have Another Cup of Coffee"
- "Make Mine Coffee"

Q. The number of cups of coffee consumed annually by the world is estimated to be . . .

- 152 billion
- 79 billion
- 400 billion

Q. An important aid in development of M. J. B.'s full, mellow-rich flavor is . . .

- all employees have college degrees
- a large supply of pre-war coffee
- regulated flow roasting

Q. The first U. S. advertisement for coffee was published in the New York Daily Advertiser in the year . . .

- 1883
- 1796
- 1759



(Brian Donlevy answered 2 out of 4 questions correctly in the above Coffee Quiz. Correct answers, in order, are: "Let's Have Another Cup of Coffee"; 152 billion; regulated flow roasting; 1796.)

Double your money back if you don't agree it's the finest coffee you ever tasted!

Fluhrer's

Date Drop Cookies

A rich delicious drop cookie filled with lots of dates and nuts. These cookies are simply a must in any lunch box, and they are ideal for that after school snack. Be sure to place your orders early while our supply is complete.

Apple Turnovers

A rich flaky pie crust filled with lots of fresh apples. These always hit the spot with both young and old, so when placing your orders be sure to include some of these tempting delicacies.

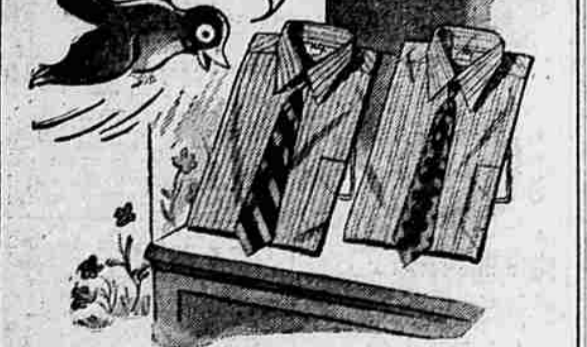
Klamath's Finest Bakery

Double your money back if you don't agree it's the finest coffee you ever tasted!

You can't make a bad cup of M. J. B.

Pick M. J. B. for extra pleasure in every cup . . . we guarantee there is no finer coffee! Here's wonderful coffee flavor, full and mellow-rich, brought to you at peak freshness. You see, the goodness of M. J. B.'s superb blend is locked in by our vacuum-pack (the highest of any coffee). Try M. J. B. next time. Make your coffee with the same care you've used in the past . . . then you'll know—

"I tell you fellows, it's here again!"



"Robins in the Klamath Country is here . . ."

"But A. Robin knows sometimes get puzzled about whether Spring the surest sign of Spring is when

THE SMART ARROW SHIRTS Start blooming at Drew's Manstore."

Signed, A. Robin

DREW'S MANSTORE

733 Main ARROW SHIRTS Since 1918