

DRAFT LIMIT FOR WORKERS BROKEN AGAIN

WASHINGTON, April 3 (AP)—The 30 per cent limit for draft deferments of young workers has been broken again. This time it is for "must" army and navy programs, chiefly aircraft.

As a result an additional 10,000 young workers under 30 will keep their deferred classifications instead of heading for induction stations.

The increase was granted by the so-called McNutt committee, an inter-agency group headed by War Manpower Chairman Paul V. McNutt. It handles deferment policies for men 16 through 29.

One informed source said he understood the entire 10,000 increase was for the aircraft industry, but another reported it covered all "must" programs of both the army and navy. In either case, most of the additional deferments are certain to go to the aircraft industry.

As is the committee's custom, no announcement was made of the increase, presumably on the theory it might set other industries clamoring for more deferments.

One report said the army air forces would account for 6000 of the new deferments leaving 4000 for the navy's bureau of aeronautics.

Chairman J. A. Krug of the war production board, who recently visited west coast plants, was told by manufacturers that the 30 per cent deferment limit was too small if production schedules were to be met.

The navy likewise reported it could not obtain the planes it requires unless more workers were kept from the draft.

HIGHER PRICES FOR LAMBS ASKED

WASHINGTON, April 3 (AP)—Liquidation of their holdings by sheepmen has been a matter of concern to the office of price administration, Chester Bowles, OPA head, said today in a letter to Senator Thomas (R-Ideho).

Bowles expressed belief, however, that this has been due partly at least to labor shortages. Bowles' letter replied to a request by Thomas for higher ceiling prices on lamb carcasses to permit increased returns on live animals. Thomas said that because of increased labor, equipment and feed costs over the past two years, many sheepmen have been forced to sell their herds and go into other businesses.

"This office has been concerned over the liquidation taking place in the past two years," Bowles wrote. "However, the war food administration, which is responsible for the farm production program, has made no recommendation for any change in our price ceilings to obtain production for war purposes."

"It is our impression that the liquidation is partly due to sheer shortage of skilled labor... and that some producers have changed to cattle because of their labor requirements."

The price administration added, however, that the lamb situation would be studied further, and Thomas announced that he would continue to press his demands for higher prices.

Medford May Get New Building

WASHINGTON, April 3 (AP)—Careful consideration will be given needs for a new federal office building in Medford, Ore., Sen. Gordon (R-Ore.) has been assured.

The postoffice department informed Gordon that it will make a survey of post-war federal housing requirements in Medford and if it finds new buildings are needed, they will be included in any post-war building program which is submitted to congress.

Ask

Paul O. Landry this question:

If a burglar should smash a plate glass window while breaking into our store, would our burglary and robbery insurance cover the cost of replacing the glass?

For information on any insurance problem, consult

THE LANDRY CO. 419 Main St. Ph. 5612

Serving Klamath 20 Years

The Courthouse Is Now One Block Down The Street From Our Office.

MEN AND WOMEN IN SERVICE

OFF IWO JIMA
Two Jima Hero PFC Earl J. Hitson, son of Mr. and Mrs. H. E. Hitson of Bonanza, came off that



hot spot in the Pacific with the best souvenir of all—his life.

Hitson was in a deceivly with four other marines on D-day on the island, they all got hit hard and he was knicked and scratched by shrapnel. He went back for three days running, each night counting new punctures in his skin made by enemy fire.

The fourth day, he decided to have some of the dirt cleaned out of his chest wounds before he went back into the firing zone. The medical examiner, afraid of infection, evacuated him.

In a letter to his folks, Hitson wrote: "I figured we could secure the island in a day or two, and our unit would not go back on line. We were pretty badly shot up. I see I was wrong. I wouldn't have left if I had known. Not that I liked any part of that island—but I hated to leave all my buddies back there."

Hitson said he was "plenty scared" at times, but not half as scared as he thought he would be. He was too busy. He was too busy, too, to collect souvenirs, but the one he did bring back was the only one he would ask for anyway. That was "yours truly."

Earl's brother, Charles A. Hitson lost his life in the North Atlantic in February 3, 1943.

Pvt. Elbert C. Mathes, 28, of Klamath Falls, is temporarily resting at the spacious Biltmore hotel section of the army ground and service forces redistribution station at Santa Barbara, Calif.

He is awaiting assignment to new duties following his recent return from 32 months of overseas service.

The Klamath Falls veteran served in the entertainment and recreation division of the special services in Alaska. Prior to enlisting in the army in July 11, 1941, Mathes was employed by the Ewauna Box company.

FOOD PROBLEM NOW CRITICAL, DECLARES WFA

WASHINGTON, April 3 (AP)—A war food administration spokesman told senate investigators today that minimum lend-lease and relief food needs cannot be met without further reduction in civilian consumption.

Lt. Col. R. W. Olmstead, chairman of WFA's food allocations committee, said that whether such a reduction in the United States and Canada is feasible is largely a matter of whether adequate controls could be devised and enforced that would achieve a sufficiently equitable distribution of the reduced supply.

Olmstead presented to the senate agriculture committee a broad summary of the allied food situation in which he said that "discrepancies between supplies and requirements are becoming greater."

"Serious shortages," he said, "are rapidly developing for meats, fats and oils, dairy products, dry eggs, sugar and rice."

"The basic reason for the increasing shortages in prospect for 1945 may be stated very simply: supplies are down and requirements are up."

In order to meet the 1945 situation as far as possible, Olmstead said, stocks of scarce commodities in both the United States and the British Empire will be "reduced to the working minimum."

A house group meanwhile mapped a four-city tour to be climaxed by an inquiry into reported New York City and Boston black markets.

Service Men and Women Home on Leave

S 2/e Darrell Harrington, home until April 4 from San Diego.

Pvt. Charles Smith from Fort Benning, Ga. Here until April 16.

S 1/e Roy Alberts from the Atlantic theatre of war. Here until April 1.

AMM 3/c Wayne Chase from the Pacific theatre of war. Here until April 6.

The above service people are entitled to free passes to the local theatres and free fountain service at Lost River dairy by courtesy of Lloyd Lamb of the theatres and R. C. Woodruff of the dairy. Please call at The Herald and News office (ask for Paul Haines) for your courtesy tickets.

If it's a "frozen" article you need, advertise for a used one in the classified.

The Road to Berlin

By The Associated Press
Eastern front: 32 miles (from Zelin).
Western front: 155 miles (from Werra river near Eisenach).
Italian front: 544 miles (from Reno river).

FAMOUS ALL-GIRL BAND COMING HERE

Dancers who are skeptical about the musical ability of the fair sex will have the opportunity to judge for themselves tomorrow night, Wednesday, at the armory, when Ada Leonard and her All-American Girl Orchestra will play a one-night engagement.

Talented to overflowing, charming and pretty, Miss Leonard knows the orchestra business. Her girls, 15 in number, were selected from various parts of the United States for performing ability, musicianship and appearance.

Able to sense the moods of audiences and literally to feel the pulse of a dance crowd, Miss Leonard has that natural knack of making the most of a large library of music and novelties. Her ability as a vocalist and dancer have greatly added to the success her orchestra has enjoyed in the leading hotels, theatres and ballrooms of the nation.

Dancing Wednesday night will begin at 8 p. m. and continue until 11:45, in cooperation with the national curfew law.

German Light Cruiser Fired

LONDON, April 3 (AP)—The German light cruiser Kaln, a liner which probably was used as a troopship and four other vessels were set afire and a 370-foot motor ship was sunk in an attack by the U. S. eighth air force on the naval dockyards at Wilhelmshaven, March 30.

Two German submarines were sunk and another damaged, the eighth air force said in a special communique.

The great engineering workshop, slipways and repair yards were severely battered.

FOR WHOM THE BELL TOLLS

Gary COOPER
Ingrid BERGMAN

PELICAN THEATRE

8TH ARMY TROOPS BEHIND NAZI LINES

ROME, April 3 (AP)—Eighth army forces have landed behind the German lines on the narrow strip of land between the Valli di Comacchio and the Adriatic and have captured more than 200 of the enemy, allied headquarters announced today.

The action was officially described as a "successful local operation." It comprised a three-pronged thrust up the spit of land separating the Comacchio lagoon from the sea. Landings were made between the sea and the Po Di Primario river and on the eastern shore of the lagoon itself.

"Our troops cleared German defensive positions half way up the spit under considerable shell fire and captured a small island in the Po Di Primario in this area," the official announcement said.

Klamath Club Slates Program

The national democratic women's organization, having designated Wednesday, April 4, as Dumbarton Oaks day, the Klamath County Democratic club has called a meeting to be held in the small library club rooms at 8 p. m., April 4.

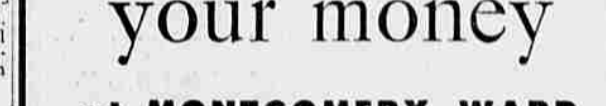
A brief business meeting will be followed by a program. Mrs. Esther Shepherd, social chairman, announced W. Lamar

Montgomery Ward advertisement for Objective Burma!



More for your money at MONTGOMERY WARD

Whatever you need, you will find wide assortments, good quality and low prices at Wards



WARDS FUEL OIL CHICK BROODER 32-in. Canopy 10.75

Here's a brooder that will give uniform temperature right to the floor! Sensitive automatic heat control Trigger action fuel valve... visible flow! Instant action for heat-flood or shut-off! Burns 38-40 distillate or kerosene. Large 4-gallon steel fuel tank! Rust-resistant! Burns only 1 to 5 gal. in 24 hours.

42-inch size11.85

QUALITY BRED BABY CHICKS 100 As Hatched 2-Star White Leghorn 14.50

WARDS FINEST VI-O-PHANE 86" wide ft. 18c

Galvanized Chick Feeders 33c

Jiffy-Way Egg Grader 1.49

Flock Size Poultry Fountain 3.49

Economy Glass Substitute 11c ft.

COTTON YARN WET MOP HEAD 39c

DRY CELL BATTERIES REDUCED!

EASY-TO-USE RUG-CLENE POWDER! 98c

IGNITION BATTERY REDUCED!

Ignition battery advertisement.

Ignition battery advertisement.

Ignition battery advertisement.

Ignition battery advertisement.

Ignition battery advertisement.

What's the Name?



It's a kind of light carriage, having two seats in a box mounted on side bars, four wheels, and sometimes a fringed top. The name is... see below—①



It's a musical instrument whose range is from BB flat to A flat in the treble. Known as Fagotto in Italian because it resembles a bundle of faggots. The name is... see below—②



Blended Whiskey • 86.5 Proof 65% Grain Neutral Spirits Kinsey Distilling Corp., Linfield, Pa.

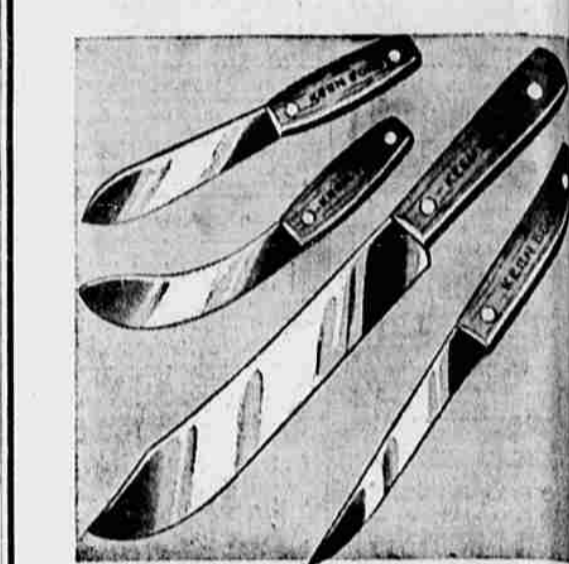
Montgomery Ward

Visit our Catalog Department for items not carried in the store. Or shop by phone—from the catalog pages!

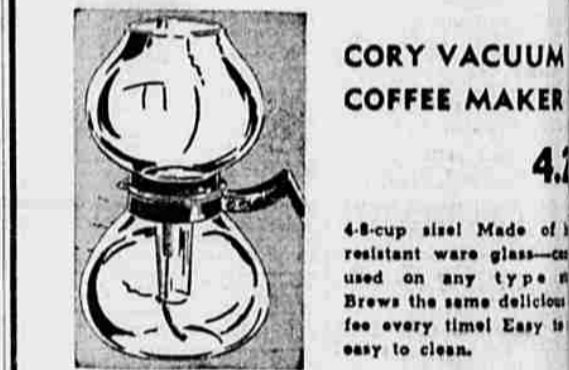
Townsend would address the group on the Dumbarton Oaks conference, and State Representative Henry Semon will explain the school measure passed at legislature. A social hour will follow. All interested are invited to attend.

Classified Ads Bring Results. MONTGOMERY WARD

Wards... headquarters for fine HOUSEWARES



HAND-GROUND STEEL BUTCHERING CUTLERY Low as 4! Gleaming high carbon steel blades, hammer-marked with hard and tempered cutting edges. Sturdy Beechwood handles, securely fastened to blades, for years of service.



CORY VACUUM COFFEE MAKER 4.49 4-8-cup size! Made of resistant ware glass—used on any type of stove. Brews the same delicious coffee every time! Easy to clean.



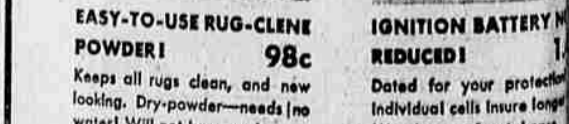
A BRUSH FOR EVERY PURPOSE As low as 10¢ Come in today and see our selection of handy brushes every household cleaning must!



EASY-TO-USE RUG-CLENE POWDER! 98c Keeps all rugs clean, and new looking. Dry-powder—needs no water! Will not harm rug!



EASY-TO-USE RUG-CLENE POWDER! 98c Keeps all rugs clean, and new looking. Dry-powder—needs no water! Will not harm rug!



EASY-TO-USE RUG-CLENE POWDER! 98c Keeps all rugs clean, and new looking. Dry-powder—needs no water! Will not harm rug!

Montgomery Ward Visit our Catalog Department for items not carried in the store. Or shop by phone—from the catalog pages!