

OPA OFFICIAL EXPLAINS NEW REGULATIONS

An excellent attendance was reported at the OPA retailers' meeting which took place at the Willard hotel on Monday evening, March 26, at 8 o'clock. This particular meeting was for all retailers in Klamath Falls and vicinity, and was one of a series of such trade sessions being held for apparel and home furnishings dealers in the Portland OPA district, which includes Oregon and southwestern Washington.

The meeting was conducted by Hosea Evans, district price executive officer, who explained the new retail regulation, MPR 580, which becomes effective April 20, and through which more medium and lower-priced apparel and house furnishings are expected to be available to consumers.

Evans acquainted the retailers with the provisions of the new regulation, which freezes individual mark-ups of each store to March 19, base date for each class of goods sold. The order requires manufacturers to restore the average level of their price lines to the averages of 1942 and 1943, and provides consumers with more certain protection against price increases.

According to Evans, each apparel, drygoods and house furnishings retailer is required to prepare three copies of a pricing chart, based on the costs and selling prices of goods he offered for sale on March 19. Evans went on to explain that on or before April 20, the retailer must file two copies of the chart with the district OPA office, retaining one copy at his store. Through these pricing charts, which must be compiled only once, retailers will find the job of figuring their ceiling prices greatly simplified.

DIVERS TO EXPLORE COLUMBIA DAM SITE

PORTLAND, March 28 (AP)—Sites for a possible dam in the Columbia river near Big Eddy, four miles east of The Dalles, will be explored late this week by four divers assisting United States army engineers.

Joe D. Campbell, one of the divers, said three different sites will be explored and four dives made at each site. The locations are at the entrance to Big Eddy near the lower end of the Celilo canal, at a point 1000 feet below the canal locks and at a point 1000 feet above Seufert's cannery.

"In making the deeper dives we will be down only 34 minutes," Campbell said. "Then we must spend 82 minutes in decompression stops on the way up. Stops will be made at 30, 20 and 10 feet for periods ranging from 16 to 32 minutes."

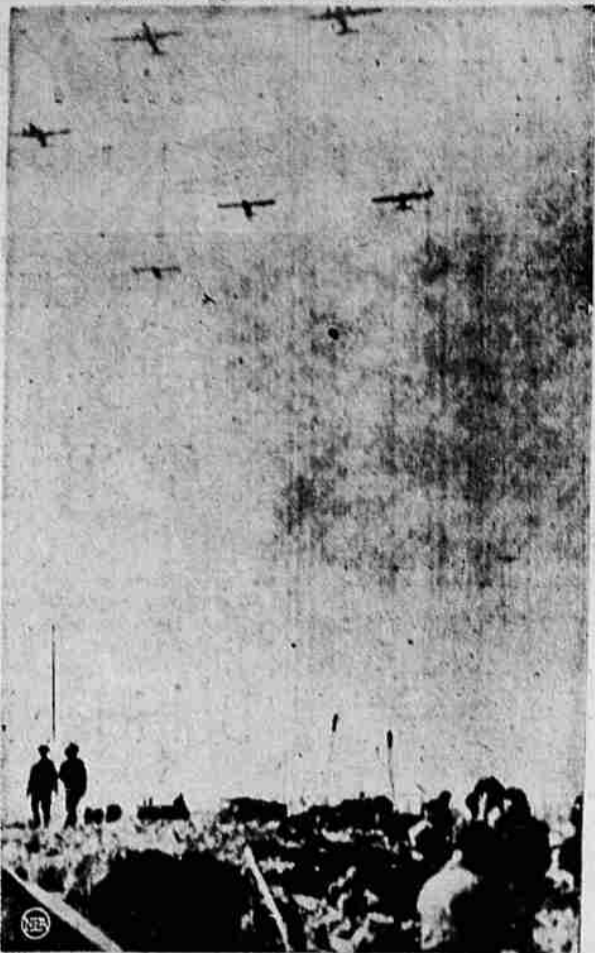
6 People Drowned When Boat Capsizes

KODIAK, Alaska, March 28 (AP)—Four women and two sailors were drowned Sunday night when their boat motor failed and the craft capsized in rough weather en route to Afognak after attending a show. Two other sailors survived.

The women were identified as Mrs. Sophie Nelson, mother of five children, Mrs. Jessie Nelson, Mrs. Jean Michell and Augusta Gregoroff.

The body of one of the women, Jessie Nelson, was recovered.

Air Troopers Cross the Rhine



Troops of the British 2nd army holding a bridgehead on the east bank of the Rhine near Xanten, Germany. Watch tow-planes and gliders of the 1st allied airborne army pass overhead. Miles-long trains of gliders streamed across the Rhine to land infantrymen behind the German defenders. (U. S. Signal Corps radiotelephoto.)

Flashes of Life

NEW "ODER" CROSSING
ALBANY, N. Y., March 28 (AP)—Motorists rubbed their eyes in disbelief, then broke all records in closing automobile windows as a convoy of skunks, reported to have numbered at least 300, crossed the four-lane Albany-Schenectady road.

It was believed that brush fires drove the skunks from their lairs.

GOOD LUCK
COOTER, Mo., March 28 (AP)—Mrs. Idaho Burns, 67, decided early in the war she would "bring luck" to as many American fighting men as she could. Since then she's sent hundreds of four-leaf clovers overseas. Every time she obtains the address of a Yank she sends him one.

She makes frequent trips into the country to hunt the rare clovers, and friends keep an eye open for them too.

LIMIT FOR A MEAL
SPOKANE, Wash., March 28 (AP)—After a doctor had told him he would die if he didn't quit eating in restaurants, a divorcee

Every Day Is SOMEBODY'S BIRTHDAY!

We Specialize In Gifts For Him

RUDY'S

600 Main

NAZI RETREAT IN ITALY INEVITABLE

By LYNN HEINZERLING
ROME, March 28 (AP)—Gen. Mark W. Clark, the allied commander in Italy, declared today that a German retreat northward was inevitable "sooner or later" and ordered patriots to stand by to strike at a moment's notice to hamper the withdrawal.

He said the patriots "will be called upon to be of specific assistance to my armies shortly" and that a large scale action by the allied forces was in prospect.

"The Germans inevitably will retreat sooner or later, leaving fascist troops to cover their rear," Clark said.

He declared it was certain that patriots in the central Apennine area would "be called upon to be of specific assistance to my armies shortly."

Patriots on escape routes north from Bologna to the Brenner pass and a long railroads leading to the Alpine passes should prepare now for their job of hampering the withdrawal, Clark added.

He advised them not to take on new recruits because of many Italians who "will try to join the winning side with suddenly acquired enthusiasm" as the end approaches. He urged, rather, that the patriots raise the quality of their formations.

Clark asserted that when the German retreat came "the order to those of you who are in areas of opportunity will be to harry their retreat by interrupting communications and by killing Germans." He added: "That time is not yet. But it is certain that patriots in the central Apennines area will be called upon to be of specific assistance to my armies shortly. They already are well armed and more help will come to them."

The entire Italian front was quiet as Clark broadcast his message. Only a few patrol skirmishes broke the monotony of a March drizzle.

The mastiff is a powerfully built, smooth-coated watch dog, with high massive head and wrinkled skin, and weighs about 170 pounds.

Just Received GABARDINE Sport Shirts

Featuring Spring shades in these finely tailored sports shirts. Sizes—Small to Extra Large

\$6.95

DREW'S MANSTORE
Since 1918
733 Main

7777

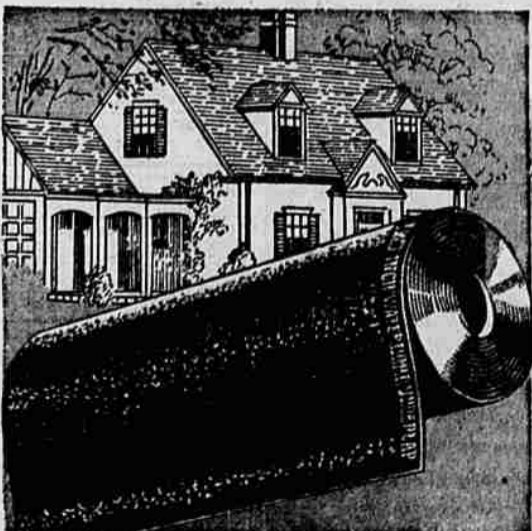
Watch This Number

Watch For OPENING of

THE EMPORIUM MEN'S STORE

In the New Location at 618 Main St.

WARDS for Complete Roofing Needs



TOUGH, SMOOTH SURFACE 45-LB. ROLL ROOFING roll 1.75

Economical and good looking on homes... practical on sheds and garages. Tough, long wearing, crack resistant. Nails and cement included. Price is for roll covering 100 sq. ft. Re-roof now at Wards low prices.

Montgomery Ward

Companies Comply With Committee

WASHINGTON, March 28 (AP)—Four of five west coast shipbuilding companies which have been involved in lengthy negotiations with the committee on fair employment practice have notified

it of their compliance with an order against discrimination in employment.

The principal complaint alleged that qualified negro workers were discriminated against by a closed shop contract, and by refusal of the International Brotherhood of Boiler Makers, Ship Builders and Helpers (AFL)

to admit negroes to full membership.

The yards included the Oregon Shipbuilding corporation and Kaiser Company, Inc., both of Portland.

LOS ANGELES, March 28 (AP)—Neighborhood kids rushed to see what they could

ped over at the curb when a huge produce truck scurried around the crates, the boys leaping of it.

Classified Ad Writing

MONTGOMERY WARD

Counting the families shoe coupons



THE VALUE-WISE FAMILY

SPENDS THEIR

AT WARDS



Every shoe coupon is precious... especially when there are active youngsters in the family. That's why so many parents buy all the family shoes at Wards where they get not only up-to-the-minute style... but good, dollar-for-dollar shoe value! At Wards there's a wide variety to choose from. Popular types for every age... from Mother and Daddy right down to the youngest baby!

A good PLACE TO BUY good SHOES

Montgomery Ward

Mobilgas AND GILMORE
Independent DEALERS
TEAM UP



Former Gilmore Dealers are now enthusiastically telling their customers: "The best buy sign is the Sign of the famous Flying Red Horse." For Gilmore Dealers have teamed up with thousands of Mobilgas Dealers. This voluntary, progressive affiliation means for all former Gilmore customers (1) Greater convenience in buying, (2) Greater availability of products, (3) Improved research resources behind each product.

PATRONIZE **Mobilgas** Independent DEALERS