

# TRAINS PUSH FURTHER BACK ON TWO

(Continued From Page One)  
500 yards on the left the third division gained yardage in the center, pushing to isolate the Japanese in the northeast coast. The third already commanding heights of the eastern coastal area where the swings down from the central front.  
Hill Captured  
Japanese suffered a setback in continued resistance the third division captured the hill 302. This part of Motoyama town, was an enemy position on the flank.  
Fourth division picked up 200 yards on the east be the third's sector.

# WAGE DEPOT NARS COMPLETION

Permit was given Warren Rock, city salvage committee man, by members of the committee, AF of L, at a meeting last night that the depot at 332 Market street will be completed Sunday. Excellent work was done by the union carpenters last week and the building should be completed by the end of the week. The depot will be on tin cans and waste fats. The first drive will be on tin cans and will run from March 17 to March 18. Rural districts and outlying communities should have their cans into the depot by March 17 and on March 18 by-wide pickup will be made.  
Klamath county residents requested by the central committee to start collecting tin cans now and to be ready when the active gets underway.

# Equal-Jail Clause Added to Bill

WASHINGTON, March 8 (AP)—Senate put back into procedure legislation to fine and jail penalties on those who violate employment ceilings or war manpower laws.  
The 36 roll call vote added an amendment by Sen. Ball (R-Minn.) to fix the sum penalties at one year's imprisonment or \$10,000 fine. A provision earlier was from the bill.  
Majority Leader Barkley made two futile attempts to debate on the bill.

# Boys Reserve Time Summer Camp

Boy Scout troops have made reservations for the summer camp on Crescent lake, according to R. H. Lamott, Boy Scout executive here.  
The troops include troop 3, Klamath Lions club, troop 23, Bend Community Presbyterian church, troop 23, Bend Lions club, and troop 28, Klamath Lions club.  
Reservations opened February 15 of the camp season will last from July 15 to August 15, Lamott said.

# HALL WE ADD TO?

What about adding "so-called" revelations and doctrines of men to the Holy Scriptures, or putting them on an equality with the scriptures?  
I testify unto every man that heareth the words of the prophecy of this book, if any shall add unto them, I will add unto him the plagues that are written in this book; and if any man shall take away from the words of the prophecy of this book, God shall take away his part from the tree of life, and out of the holy city, and out of the holy books, which are written in this book." (Rev. 22:18, 19).

# Church of Christ

2203 Wantland Ave.  
Adding Machines  
Friden Calculators  
Royal Typewriters  
Desks - Chairs - Files  
For those hard-to-get items  
PIONEER PRINTING  
AND STATIONERY CO.  
So. 9th Klamath Falls

## Yank Armor Enters Cologne; Takes City



Troops and armor of the third armored division of the First U. S. Army wait in side street in the German city of Cologne before driving for the heart of the city whose capture was announced March 6. This is one of the first pictures taken inside Cologne and was made by William C. Allan, Associated Press photographer with the Warlimb Still Picture Pool. (AP Wire-photo via Signal Corps Radio).

# FIRM HOLD GAINED BY FIRST ARMY

(Continued From Page One)  
and trucks, and it appeared probable that this type equipment might have been used for the actual crossing. Pontoon bridges could be thrown across the river swiftly, once the east bank was secured. The middle Rhine—the section between Cologne and Bingen—generally is from five to 15 feet deep but occasionally 25 to 70 feet deep. Its normal current is six to nine miles an hour.  
Light Opposition  
First army infantrymen spanned the quarter-mile-wide river against rather light opposition before the startled Germans could grasp what had happened. AP Correspondent Wes Gallagher said.  
The surprise announcement was passed by censors at 5:55 tonight after 24 hours of security blackout—used while events of great importance are shaping.  
Other units of the first army captured half of the Rhine university town of Bonn (101,000) and half of nearby Bad Godesberg, where Hitler six years ago humbled the late Neville Chamberlain before Munich.

# BRITISH TROOPS ENTER MANDALAY

(Continued From Page One)  
In reinforcements immediately. It is believed here they may be ousted from Burma in the not too distant future. Supplying troops and reinforcements is a major Japanese headache since their key north-south communications now are severed and tenuous alternate routes are under continual hammering by air.  
Railway Terminus  
The fall of Lashio came six weeks after the Ledo road was opened from India to China. The town is the northern terminus of the railway to Rangoon.  
The Japanese still control good roads from a few miles south of Lashio to southern Burma, Thailand and Indo-China.

# EDITORIALS ON NEWS

(Continued from Page One)  
It fairly clear that in all such ruckuses the holder of the appointive power usually comes out ahead.

THERE is another school, fairly numerous and including a fair proportion of impersonal observers, that thinks FDR may have been just finally and definitely getting rid of Henry, whom he dropped overboard at the convention last summer.  
The theory of these people is that the President picked the secretaryship of the department of commerce as the one job for which Wallace couldn't possibly be confirmed by the senate, expecting, when confirmation was refused, to be in a position to shrug his shoulders and say deprecatingly: "Well, Henry, I've done my best to repay you for the self-sacrificing, self-forgetting devotion you displayed last summer when you gave me your all-out support after getting the gate at Chicago. But you see how it is. I just can't get away with it. The wicked senate won't let me."  
"But at least I've done the best I can to pay off my debt."

THERE is a third sector of political opinion which holds the thought that Wallace was being built up as the New Deal candidate for 1948, and that his final confirmation by the senate has more or less dumped the play.  
The contention has been that in order to be a sure-fire winner in 1948 Wallace will have to be dramatized as a martyr. Now that the senate has gone ahead and seated him in the commerce secretary's chair, after taking away the big war, it is ascertained that he will have a hard time playing himself up as the leader of a great cause that will be hopelessly lost unless he is vindicated at the polls three and a half years hence.

HERE and there one hears a chirp to the effect that once again Roosevelt is knocking down a head that threatens to rise above the general level in the New Deal Party, thus offering a threat to the theory of his own indispensability.  
Hoover managed it, but the department of commerce isn't very widely regarded as a stepping stone to the Presidency. Once installed there, the argument goes, Henry will be definitely buried.

THE tendency of objective, non-partisan observers here is to withhold an opinion until the President names an administrator of the great lending agencies that were amputated from the department of commerce as the price of Wallace's confirmation.  
The kind of man he picks for this job will give a reasonably dependable inkling of what is in his mind for the course that he described after his fourth election as "slightly left of center."

## War Comes Close to Home



The site of the Washington, D. C., home of Pvt. James A. Ennis, recuperating in England from combat wounds, is needed for a new defense plant corporation office building. But the Ennis family can't find a new home within their means and do not even have cash for moving expenses. So Pvt. Ennis' children, Josephine, 4; Albert, 5, and Rosalie, 3, dolefully watch through the window as a workman tears up the yard preparatory to razing the house.

# Mountain Troops Improve Positions

ROME, March 8 (AP)—The U. S. 10th mountain division made "local improvements" yesterday despite German attacks on its newly-won positions west of the Bologna-Pistoia highway on the fifth army Italian front, allied headquarters announced today.  
The rugged American division is consolidating a five mile advance through rough terrain and heavy nazi artillery, machinegun and mortar fire. Several dominating peaks within 20 miles of Bologna were captured in the drive which headquarters yesterday termed "a most successful limited objective attack."

# Investigations Into Blast Made

VANCOUVER, B. C., March 8 (CP)—Five official investigations were underway into Vancouver's worst harbor disaster today as a third body was removed from the explosion-torn S. S. Greenhill Park.  
With small fires still burning below decks of the beached 10,000-ton freighter, salvage crews reported they are seeking "at least six more bodies."  
All three bodies were burned beyond recognition but from previous eyewitness accounts the first two are presumed to be W. T. Lewis and Michael McGrath, both longshoremen.

# BILL APPROVED

SALEM, March 8 (AP)—The house approved and sent to the senate today a bill to allow the state forester to create districts to control insect pests which are harmful to forests.  
America's first successful air flight, in a balloon, was made January 7, 1793.

# If you need to BUILD UP RED BLOOD!

Due To Monthly Losses  
If you lose so much during monthly periods that you feel so weak, "draggled out," this may be due to low blood-iron—so try Lydia E. Pinkham's Tonic—one of the greatest blood-iron tonics you can buy. Pinkham's Tablets are also famous to help relieve symptoms of constipation, functional disturbances. Follow label directions.  
Lydia E. Pinkham's TABLETS

# EQUALIZED TAX, VET BILL OKAYED

(Continued From Page One)  
cent of the voters of a county may petition for elections to come under the plan. The voters in the county would elect a county board of 3 to 7 members. The board would appoint a manager, who would name department heads. The board also would name the county judge. The departments would be records and finance, education, public works, public welfare, and such other departments as the board might want.  
All present county offices would be eliminated.

# Koiso Hints of Yank Invasion

By The Associated Press  
Premier Kuniaki Koiso told sponsors of a new Japanese totalitarian party today the allies might attack the Nipponese mainland "in the near future" in an attempt to shorten the war.  
The premier was quoted in a Tokyo broadcast of a Domei news agency report, heard by the FCC, which also said he called upon the Japanese to "sacrifice everything" to prepare for a prospective invasion.

# More Comfort Wearing FALSE TEETH

Here is a pleasant way to overcome loose plate discomfort. PASTEETH, an improved powder, sprinkled on upper and lower plates holds them firm so that they feel more comfortable. No gummy, soapy, pasty taste or feeling. It's alkaline (non-acid). Does not sour. Checks "plate odor" (denture breath). Get PASTEETH today at any drug store.

Day and Evening Classes  
COMPLETE BUSINESS COURSE  
Including  
That Speedy  
Thomas Natural  
Shorthand  
Klamath Business College  
733 Pine Phone 4780

# Income Tax Returns Prepared As Always

AT  
M. L. Johnson's Office  
412 Main St., Klamath Falls.  
Open Evenings

# MEDFORD RESIDENT DIES IN VALLEY

James A. Perry, prominent Medford civic leader, banker and orchardist, died Monday at his home and final rites were conducted in the valley city Thursday afternoon.  
Mr. Perry was president of the Medford National bank for two years prior to the sale of the bank to the United States National bank of Portland. He was well known to members of the Masonic fraternity in southern Oregon, having been active in the Masonic lodge No. 103, AF and AM, of Malta Comander No. 4, Knights Templar, and of Hillah Temple of the Shrine. He served as treasurer of the Blue Lodge for 40 years. He is survived by his wife, Ella, a daughter, Mrs. Frances Flinn, a son, Allan whose wife is the former Aileen Mordoff of Klamath Falls, and three grandchildren.

# Dairy Productions Payments Scheduled

Payments for the January, February and March dairy production period will be made to producers after April 1 on creamery receipts turned in to the county AAA office before May 31. Rates for this payment are 70 cents a hundred for whole milk, or 10 cents a pound for butterfat.  
Payments have also been authorized for the second quarter months of April, May and June. For this period, rates for whole milk are reduced to 35 cents a hundred pounds, and butterfat will stay at 10 cents a pound. Payment will be made after July 1 on receipts turned in before August 31.

# Barnes Pleads Guilty To Traffic Violation

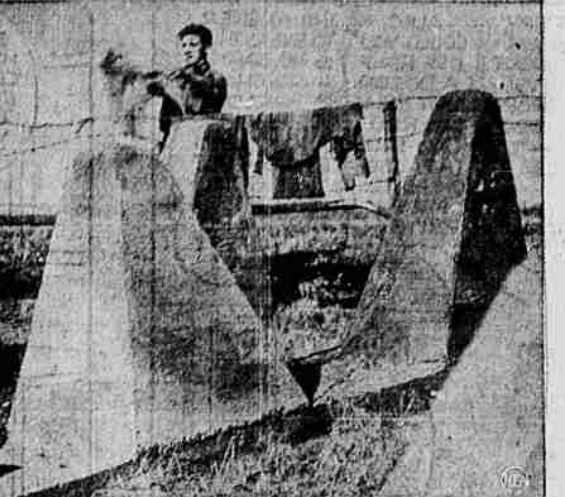
Marion J. Barnes of Olney, who sought a jury trial following a charge of failure to stop at an intersection stop sign filed by state police, entered a plea of guilty and paid a fine of \$5.50 in justice court Wednesday.  
A jury had been called to hear the case set for Tuesday, March 13, Justice of the Peace J. A. Mahoney stated.

# BACKACHE, LEG PAINS MAY BE DANGER SIGN Of Tired Kidneys

If backache and leg pains are making you miserable, don't just complain and do nothing about them. Nature may be warning you that your kidneys need attention.  
The kidneys are Nature's chief way of taking excess acids and poisonous waste out of the blood. They help most people pass about 3 pints a day.  
If the 15 miles of kidney tubes and filters don't work well, poisonous waste matter stays in the blood. These poisons may start nagging backaches, rheumatic pains, leg pains, loss of pep and energy, getting up nights, swelling, puffiness under the eyes, headaches and dizziness. Frequent or scanty passages with smarting and burning sometimes shows there is something wrong with your kidneys or bladder.  
Don't wait. Ask your druggist for Doan's Pills, used successfully by millions for over 40 years. They give happy relief and will help clear 15 miles of kidney tubes from poisonous waste from the blood. Get Doan's Pills

DANCE  
— 8:30 to 12 P. M. —  
DANCELAND  
515 Klamath Ave  
SATURDAY NITE  
Auspices V. F. W.  
Music by PAPPY GORDON'S Oregon Hill Billies

## About All It's Good for Now



Acting out the words of the song popular in the early days of the war, Pfc. Arnold Young of Perrysburg, Ohio, hangs out his laundry on the Siegfried Line, outside Pruem, Germany. Pvt. Young is a member of the 4th division.

# BABY GIRL DIES FOLLOWING ILLNESS

Sue Ann Grimes, 3-year-old daughter of PFC and Mrs. Henry F. Grimes, died early Thursday afternoon at Klamath Valley hospital following a brief illness. The child's father, member of a pioneer Klamath county family, is stationed at Fort Riley, Kan. He has been in the hospital at the post since February 28, and was advised of his young daughter's passing today.

Sue Ann was born in Klamath Falls and would have been three years old March 26. She is survived by her mother and a brother, Gray, and one sister, Karen, and her grandparents, Mr. and Mrs. Henry A. Grimes, 1434 Canby. Mrs. Grimes and her children have resided at the B. S. Grigsby ranch at Olene.

# New Wage Policy Looms as Result Of Davis Shift

WASHINGTON, March 8 (AP)—A new policy for granting "fringe" wage increases loomed today as the immediate outgrowth of President Roosevelt's shift of William H. Davis from war labor board chairman to economic stabilizer.  
Fred M. Vinson said he expected "something to develop" with regard to secondary wage adjustments before he turns over the economic stabilization job to Davis.  
The two have been conferring over their sharp difference on the extent to which OPA should influence WLB decisions.

# WFA Sets Payment For Flax Plantings

The war food administration will make a payment of \$5 per acre of flax planted for seed, up to the acreage set as a farm goal. A national increase of 64 per cent in acreage is required to meet the 1945 military and civilian needs.  
All farmers in Klamath county who expect to plant flax for seed should report their intended acreage to the county AAA office in the Federal building in order that goals may be set for their farms.  
A crop insurance plan has been provided for this crop. The premium rates and details will be available at the county AAA office soon.



EVERY  
Wednesday  
AND  
Saturday  
8:30 to 12:00  
Armory  
Baldy's Band  
COMING  
Ada Leonard  
and her all girl  
Orchestra  
Wed., April 4

DANCE  
— 8:30 to 12 P. M. —  
DANCELAND  
515 Klamath Ave  
SATURDAY NITE  
Auspices V. F. W.  
Music by PAPPY GORDON'S Oregon Hill Billies

# BANG'S DISEASE LOW IN BASIN AREA

(Continued from Page One)  
inside the city limits, only. He said that it was under Mayor Willis E. Mahoney several years ago that a functioning city health program was developed.  
Percy Murray, chairman of the meeting, told the Kwanians that milk supply for this community has become an increasingly serious problem. Milk is now brought here from Yreka, Medford and Eugene, to supplement the local supply, which is dwindling because of the steady sale of dairy cattle from this area.

# Boy Scout Official To Aid In Planning Crescent Lake Camp

Ray Bryan of the engineering service of the national council, Boy Scouts of America, will assist in laying out specific plans for the future development of the Modoc council Boy Scout camp at Crescent lake.  
Bryan will arrive at Crescent lake from Portland on April 7 and will be met by the camping committee and camp officials, including K. G. Klahn, W. L. Bullard and R. H. Lamott of Klamath Falls.

# A different essential job for a Machinist

Fed up with routine work? Want an essential, DIFFERENT job that pays off with MORE than just a good salary? Then this is for you! S.P. needs machinists to keep those big locomotives rolling... hauling vital war supplies to our fighting men. These locos are a thrill to work on... beautiful machinery! You tackle new problems daily... with experts who know their stuff. Pay is good... railroad standard. You get plenty extra, too... hospitalization, medical service, R.R. pass privileges, pension plan. Don't miss this chance to tie in with a friendly, PERMANENT company, with its biggest jobs still ahead. Come in for more details. No obligation. MANY OTHER GOOD JOBS OPEN AT S.P.  
See or write Trainmaster,  
S.P. Station, Klamath Falls,  
or nearest S.P. Agent

# NEW kind of ASPIRIN tablet doesn't upset stomach

When you need quick relief from pain, do you hesitate to take aspirin because it leaves you with an upset stomach? If so, this new medical discovery,  
SUPERIN, is "just what the doctor ordered" for you.  
Superin is aspirin plus—contains the same pure, safe aspirin you have long known—but developed by doctors in a special way for those upset by aspirin in its ordinary form.  
This new kind of aspirin tablet dissolves more quickly, lets the aspirin get right at the job of relieving pain, reduces the acidity of ordinary aspirin, and does not irritate or upset stomach—even after repeat doses.  
Tear this out to remind you to get Superin today, so you can have it on hand when headaches, colds, etc., strike. See how quickly it relieves pain—how fine you feel after taking. At your druggist's, 15¢ and 39¢.

INSURE your car with Hans Norland, 118 North 7th St.

\$100 a Month  
for Life

Oregon Mutual Life  
INSURANCE COMPANY  
LYNN ROYCROFT  
EVA LONG  
118 N. 7th Street,  
Klamath Falls, Oregon

Superin  
TABLETS

EAGLES  
THIS AND EVERY  
Saturday  
Dancing for Members  
And Their Ladies  
Music by Shepherd's Orchestra  
Admission Is Free, So Let Us All  
Turn Out For Good Times