

PUSH CARRIES NEAR EDGE OF RUHR SECTOR

(Continued From Page One)

Rhineland is assuming the proportions of a breakthrough tonight," AP Correspondent Ned Nordness reported from Canadian headquarters. "So many prisoners surrendered that roads back were clogged. Hundreds of tanks are operating under Canadian command to break the backbone of Von Rundstedt's resistance. They have cracked his last defense in the Hochwald and resistance tonight apparently is fast crumbling."

Another great victory was shaping up in the center of the western front. The U. S. third army stormed into the fortress town of Bitburg, junction of 10 military highways in the Moselle valley. Bitburg was thinly held, resistance was slight.

Outflank Center
The ninth army charge to Konigshoven passed through town after town and outflanked the Ruhr basin industrial and communications center of Munchen Gladbach.

Other ninth army men moved within two and a half miles of Munchen Gladbach and captured many villages on the southern and western approaches to the city of 127,000.

American first army troops fought closer than 10 miles from the outskirts of Cologne after advancing more than a mile down the main road from Duren beyond Berghausen.

MacArthur Sets Up Government in Manila

(Continued from Page One)

ed by men who fought with him in adversity at Bataan and Corregidor, told widely cheering Filipinos he was lifting military rule from liberated areas of their commonwealth in favor of the constituted government of President Sergio Osmena.

"Your country once again is at liberty to pursue its destiny to an honored position in the family of free nations," he said. Manila was occupied unopposed by the Japanese, January 2, 1942.

Earlier today, General MacArthur had disclosed in a communique that soldiers of Maj. Gen. Frederick A. Irving's 24th division landed Sunday on tiny Verde island, midway in the 10-mile channel between Luzon and Mindoro islands, to secure the west end of a direct route through the heart of the archipelago. Less than a week ago, the east end was secured by invasions of Capul and Biri islands in San Bernardino strait between Luzon and Samar.

LITTLE LESSONS IN SPANISH



¿QUIÉN SABE? means "who knows?"

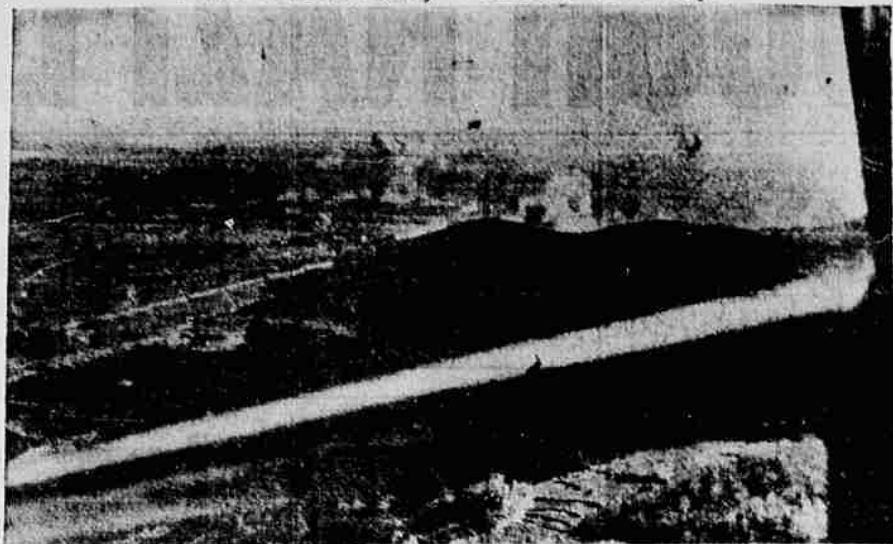
Who knows of a better beer than that good imported Tecate Beer?



TECATE BEER

Imported by Balfour, Guthrie & Co., Ltd. San Francisco, Calif.

First Photo! Navy Planes Over Tokyo



(NEA Telephoto)
This first picture of American carrier-based plane raid on Tokyo shows smoke rising from direct hits on a factory near the city. More than 1300 American planes from a huge naval armada only 300 miles off the Japanese coast smashed at the Tokyo area for two days in heaviest raids ever made on the enemy capital. U. S. Navy photo.

'For Unity of Americas'



(NEA Telephoto)
At Inter-American conference in Mexico City, Mexico's Secretary of Foreign Affairs, Ezequiel Padilla, stands behind President Manuel Avila Camacho, who delivered chief address at formal opening of the parley.

26 Executed in Madrid Trouble

MADRID, Feb. 27 (AP)—Two falangist officials have been assassinated and 26 leftists have been executed to meet what the Madrid falange regards as a challenge by the Spanish underground of the left.

The leftists were hanged Saturday night as the result of military court sentences.

Sunday night a group of unidentified men lured Martin Mora, secretary of the falange of the Cuatro Caminos district of Madrid, to his headquarters where they killed him and his assistant.

At dawn Monday 16 communists were executed.

Yanks Repulse Counterattack

ROME, Feb. 27 (AP)—The U. S. tenth mountain division has thrown back a strong German counterattack in the area of Mount D'Elia Torracia, inflicting heavy casualties and capturing a number of prisoners, the allied command announced today.

The Germans, who have been contesting every allied gain, moved out in the counterattack below Bologna after an intense artillery barrage. After being forced to withdraw, they continued to throw heavy fire against the American positions in the mountains.

Tydings Clause Made Tighter

WASHINGTON, Feb. 27 (AP)—Legislation giving necessary and irreplaceable farm youths virtually airtight draft deferments was passed by a voice vote by the house today and sent to the senate.

It emphasizes and tightens the Tydings amendment to the selective service act which outlines procedure for the induction of farmers and requires draft boards to consider the essentiality and replaceability of registrants.

RACE STREET PHILADELPHIA—Race street in Philadelphia was one of America's earliest race courses for horses.

Automobile insurance. Hans Norland, 118 North 7th.

Elastic Suspenders
Work or Dress
OREGON WOOLEN STORE
Main and 8th

Opening of Bids On Road Projects Set

The Oregon state highway commission announced today it would open bids in Portland March 13, on 12 projects costing \$420,000, and including two Klamath county jobs. They are:

Provide 8000 cubic yards of crushed rock on Chemult-Beaver Marsh rock production project on The Dalles-California and East Diamond lake highways, and provide 12,500 cubic yards of crushed rock on Fort Klamath-Lobert rock production project on five state highways.

Duck Stamps Will Go On Sale July 1

WASHINGTON, Feb. 27 (AP)—The federal "duck stamp" for the 1945-46 hunting season will picture three shoveler ducks in flight.

Required by hunters of migratory waterfowl, the stamp will go on sale for the usual \$1 at all first and second-class post-offices on July 1, the Fish and Wildlife service announced.

REDS BREAK THROUGH FOR 44-MILE GAIN

(Continued From Page One)

Berlin, but that these had been knocked back.

Offense Hinted
Nazi reports of tank battles raging along the Oder-Neisse river suggested the first White Russian and first Ukrainian armies might have opened an offensive to topple Berlin.

The Germans located the Neisse bridgeheads between Guben and Forst, 51 and 57 miles southeast of the capital, and southeast of Forst. This might indicate soviet attempts to outflank the river bastions of Guben and Forst.

Moscow remained silent on activities at this gate to Berlin.

INVESTIGATION INTO WOMAN'S DEATH SET

(Continued From Page One)

farmed the Matilda S. Tate place two miles north of Tulalake.

At the time of Mrs. Guerin's death Dr. Adler contacted Sheriff Ben Richardson at Yreka, Calif., and Richardson was in Tulalake today conducting an investigation. He is assisted by Deputy Sheriff Johnny Cortez. Sheriff Richardson said he intended to be in Klamath Falls late today.

Mrs. Guerin was born February 1, 1887, in Hot Springs, Ark. Her husband is her sole survivor, or, it is understood, the body is at Ward's.

Man Returned Here From New Mexico

Samuel F. Ashwell, indicted at the last session of the Klamath county grand jury on a charge of larceny by baillee, was returned to Klamath Falls today by Deputy Sheriff Dale Mattoon.

Ashwell was held for Klamath officials at Lordsburg, N. M., with extradition papers signed by governors of Oregon and New Mexico. He is said to have taken a car owned by Balsiger Motor company while a second machine, for which he allegedly tendered a bad check, was being repaired.

GREAT POWERS PREPARED FOR NAZI COLLAPSE

(Continued From Page One)

Great Britain and by the United States.

Then Churchill added: "The impression I brought back from Crimea and from all my other contacts is that Marshal Stalin and the soviet leaders wish to live in honorable friendship and equality with the western democracies. I feel also that their word is their bond. I know of no government which stands on its obligations more solidly than the Russian soviet government."

He declared the objective of the great powers was "to save the world—not to rule it," and that "the world organization cannot be based upon the dictatorship of the great powers."

Thousands Hit In Berlin Raid

By The Associated Press
From 25,000 to 30,000 casualties were caused in Berlin yesterday by the 1200-bomber raid by the U. S. air force, Stockholm-Tidningen said today in a dispatch reported to the OWI.

Central and northern sections of Berlin were the worst hit, with "thousands of freight cars destroyed," the dispatch added.

A new type of incendiary bomb "which cannot be extinguished with any means tested so far" caused huge fires of "unprecedented extent," the newspaper declared.

Plans For USO Center Nearly Complete Here

Plans and specifications for the USO center here are about 85 per cent complete at the office of Howard R. Perrin, local architect.

Perrin said today the plans will be sent to the San Francisco USO office the first of next week for final approval.

The Arcade garage is to be re-modeled for the USO center.

WEATHER

	Max.	Min.	Precip.
Eugene	40	21	Trace
Klamath Falls	40	21	Trace
Sacramento	40	26	Trace
North Bend	40	41	90
Portland	47	30	18
Medford	51	32	Trace
Reno	54	19	Trace
San Francisco	54	41	Trace
Seattle	44	37	15

Northern California—Scattered cloudiness today, tonight and Wednesday. Few snow flurries over Siakyou mountains and few light showers north of Eureka. Continued cold.

Washington and Oregon—Scattered showers today, tonight and Wednesday with snow flurries above 2500 feet.

PELICAN

Box Office Opens. Mat. 1:30 - Eve. 8:45

Now Playing

Two mad, merry men on a magic carpet—and when it lands them inside a harem, you'll see sultry sirens, you'll hear hot music, you'll howl as never before!

TWO ARABIAN KNIGHTS AT THEIR FUNNIEST!



COMING! WATCH FOR PLAY DATES

Richard ARLEN - Robert LYNNSTON - Jane FRAZEE
George "Gaby" BATES
Lynn ROBERTS
THE BIG BONANZA



Barbara Jones, 13-year-old Houston miss, executes stag jump winning junior women's title in Midwestern Figure Skating Championships in Chicago.

THIS CURIOUS WORLD



ERASTOTHELES
GREEK POET,
MEASURED THE EARTH'S CIRCUMFERENCE LONG BEFORE THE BIRTH OF CHRIST, AND ERRED LESS THAN A THOUSAND MILES!
...AND HIS EQUIPMENT CONSISTED ONLY OF THE SUN, A STICK, A DEEP WELL...AND SOME MATHEMATICS.

ANSWER: At Sylvan Lake, near Rome City, Ind.

PINE TREE

PHONE 3287
CONTINUOUS SHOW DAILY - OPEN 12:30

SENSATIONAL

Double Feature Program

STARTS TODAY

After eight years as a sensational STAGE success...

NOW Acclaimed a Sensational Screen Success!

TOBACCO ROAD

Directed by JOHN FORD
with Charley Grapewin as "Jeeter"
Marjorie Rambeau
Gene Tierney
and a Great Cast

Plus

Still The Greatest Novel of Our Time!

DARRYL F. ZANUCK'S production
THE GRAPES OF WRATH
by John Steinbeck
HENRY FONDA

TAX INVESTIGATION PASSED BY HOUSE

(Continued From Page One)
poses of it, the measure will not be sent to the governor's signature, as resolutions do require executive approval. Several senators, however, are expected to fight on the floor in behalf of his insistence that experts be hired.

ESQUIRE

Phone 4587
Matinee Daily Open 1:30
Evening 8:45

TOWER

BOX OFFICE OPENS

TODAY

M-G-M's GREAT NEW ROMANTIC TRIUMPH!

Greer, a boom-town beauty! Pidgeon, a rich, romantic rogue! They both knew what they wanted!

GREER GARSON
WALTER PIDGEON
gloriously together again!
MRS. PARKINGTON

EDWARD ARNOLD - MOOREHEAD
CECIL KELLAWAY
GLADYS COOPER - RAFFERTY
PETER LANFORD - DUBYEA - WALLACE
and the SAMPSON LUREY CHORUS

Added
"Puttin' On The Dog"
(Color Cartoon)
NEWS

TOWER

Starts WEDNESDAY

|| TWO HITS ||
WEDNESDAY OF INTRODUCTION

Storm Over Lisbon
VERA RALSTON
RICHARD ARLEN
Erich Von STROHEIM

|| PLUS ||
Radio's Mystery Man

MARK OF THE WHISTLE
with JAMES CAGNEY
JANE FARRAR
PAUL HENREID
GUILFOYLL