

# Suit Filed Against General Electric on Cartel Maintenance

WASHINGTON, Jan. 18 (AP)—Federal suit charging the General Electric company and the International General Electric company with maintaining international cartel agreements was announced today by the Justice department.

# NO TAKE PART IN YEARLY BOY SCOUT COUNCIL

More than 90 men participated in the annual meeting and planning conference of the Pacific area council, Boy Scouts of America, last Sunday at the Willard hotel when most of the officers were reelected for 1945. G. Klahn was returned to the presidency with Paul Reiter of Alturas as vice president. Lester Offield will again serve as treasurer with Rev. R. Prentice of Bend as council commissioner. A. B. Hood will be national council representative.

The new executive board will number 32 men, among whom are the following Klamath men: Greer Drew, J. V. Wrens, Lloyd Prock, R. C. Wesbeck, Dr. F. C. Adams, K. Moore, Arnold Gralapp, John Huston, Charles Weise, Laddie Jones, Rev. T. P. Casey, C. S. Hiet, Charles H. Stark and Howard Hutchins.

A camp development program was approved by members of the council's camping and activities committee. Covering a number of years, the program will provide an ideal camp layout of 150 scouts per week over a four or seven-week period each summer. W. L. Bullard, recently appointed as Klamath district representative on this committee, will work on future plans with the area group.

A budget of \$19,113.90 was adopted for 1945. This amount will provide the scouting, clubbing and senior scouting program for boys in more than six counties, \$3000 of which will be set aside for future camp development. Plans were made at a Sunday gathering to enroll 52 boys by December 31, 1945. There are now 1300 enrolled.

# Financial Support for League Asked

PORTLAND, Jan. 18 (AP)—L. Erickson, OPA regional labor relations advisor, had authorization today to ask AFL, CIO and railroad brotherhoods for financial support for a new consumer league in this area.

Organization of the league was approved yesterday by the OPA labor advisory committee. Plan to have housewives write out and grocery prices on cards to be forwarded to the OPA, as check on merchants, was proposed by McDannell Brown, district OPA chief.

The committee tabled a proposal to seek state legislation making violation of office of price administration orders a misdemeanor.

# The Road to Berlin

By The Associated Press  
1—Russian front: 260 miles (from Czestochowa)  
2—Western front: 301 miles (from near Duren)  
3—Hungarian front: 304 miles (from Iron river)  
4—Italian front: 544 miles (from Reno river)

**PREPAREDNESS**  
OKLAHOMA CITY, Jan. 18 (AP)—State Safety Commissioner J. M. Gentry was scratching his head over this unusual request: A letter bearing 50 cents from Lt. Col. Ross H. Routh, fighting with the infantry in Italy, asking that his Oklahoma drivers license be renewed and sent to him as soon as possible.

# WAC RECRUITING HEAD TO ARRIVE

Major B. P. Cody, for the past five months commanding officer of the women's army corps Oregon recruiting headquarters in Portland, has assumed command of the WAC recruiting branch for the entire ninth service command with headquarters in Fort Douglas, Utah, it was announced today.

Replacing Major Cody in command of the Oregon WAC recruiting headquarters is Capt. R. L. Gantenbein, a Portland resident and formerly connected with the internal revenue department before entering the army air corps. Capt. Gantenbein has been associated with

WAC recruiting in Washington and Oregon for the last 15 months. He will arrive in Klamath Falls tonight to spend four days inspecting the activities of the Klamath Falls army recruiting station, and also bring with him the latest information about the women's army corps.

Capt. Gantenbein's new assignment came on the heels of an announcement by the war department that recruiting for the women's army corps will continue throughout 1945, especially for medical and surgical technicians for the medical department. The urgent need for additional medical personnel in

army hospitals was emphasized by the proposal of President Roosevelt to draft nurses for military service.

Complete information about the women's army corps is available at the army recruiting station, 219 postoffice building, phone 8401.

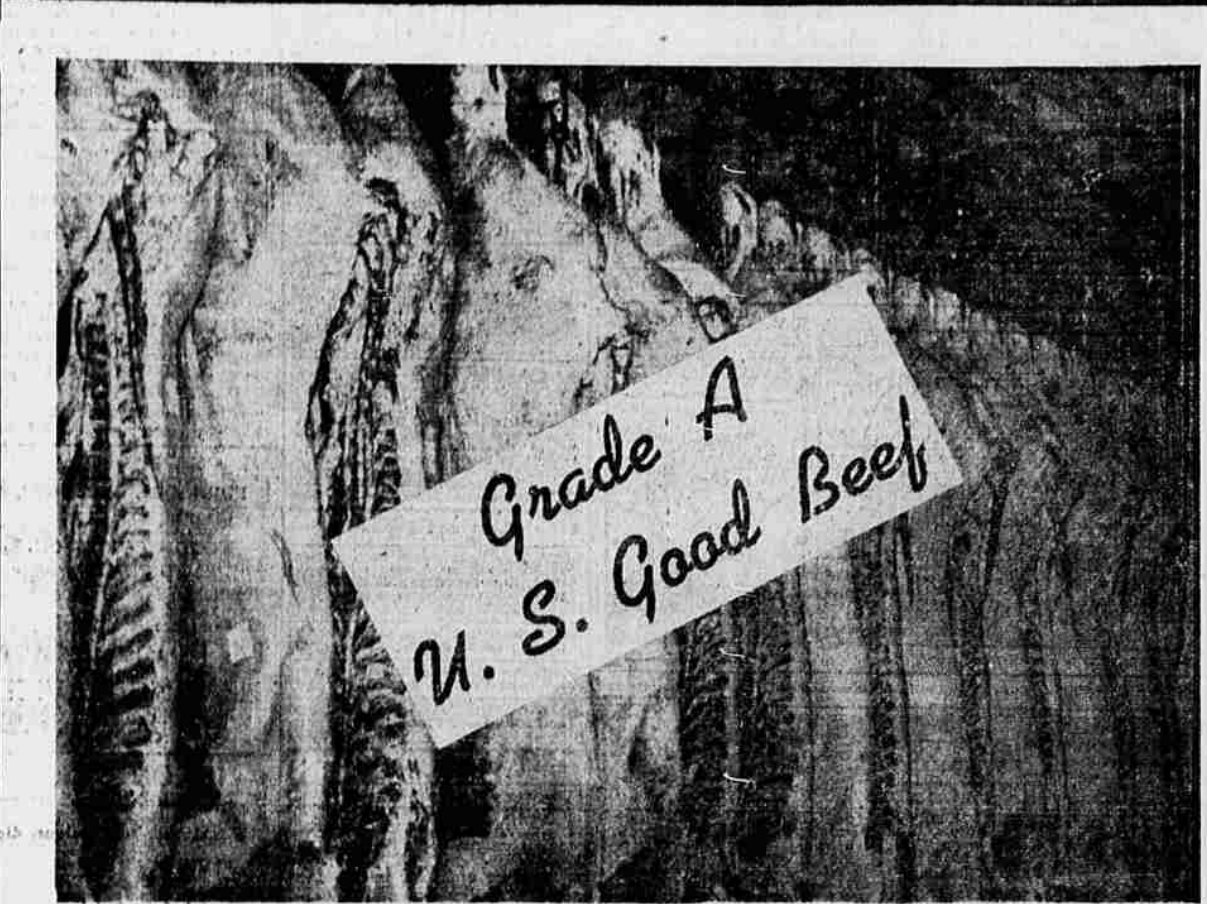
Wise choice for coffee lovers



**Schilling**  
VACUUM PACKED COFFEE

Rock Wool  
**INSULATION**  
Blown In  
Saves Your Fuel!  
Free Estimates  
**SUBURBAN**  
Lumber Company  
Phone 7709

**COLDS**  
Relieve misery, as most mothers do. Rub the throat, chest and back with time-tested  
**VICKS**  
VAPORUB



Grade A  
U. S. Good Beef

# HERE IT IS!

For your selection—  
The most delicious beef that money can buy.

Butter-tender steer beef steaks and mouth-watering juicy roasts. Yes, the very cream selected from

**Liskey Bros. Famous White Face Herefords**

Additional meat value has been added to these fancy steer beefs through Liskey Bros. up-to-the-minute scientific methods of feeding.

All grades of beef now require the same number of points—fancy, good, commercial and utility, so when you spend those valued ration points, get the best at **SAFEWAY**. Satisfy the family appetites tonight. Take home a roast or steak cut from these grain fed Grade "A" Liskey steer beef.

Steaks	Roast	Stews and Lower Priced Cuts	Miscellaneous Items
LISKEY BEEF GRADE A	LISKEY BEEF GRADE A	LISKEY BEEF GRADE A	LISKEY BEEF
T-Bone . . lb. 48c (12 pts.)	Standing Rib . . . lb. 32c (7 pts.)	Short Ribs lb. 20c (1 pt.)	Beef Hearts lb. 22c Point Free
Rib . . . lb. 32c (8 pts.)	Rump . . . lb. 26c (6 pts.)	Boiling Beef lb. 26c (1 pt.)	Beef Tongues lb. 36c Point Free
Sirloin . . lb. 40c (11 pts.)	Pot Roast, lb. 27c (3 pts.) Blade and Arm Cuts	Ground Beef lb. 28c (4 pts.)	Pork Liver lb. 24c Point Free
Round . . lb. 38c (13 pts.)			
Flank . . . lb. 38c (6 pts.)			

Lard Fresh Rendered . . . 2 Lbs. 35c	Smelt Fresh Caught Lb. 19c
Sauerkraut Made from No. 1 Shredded Cabbage—Qt. 15c	
Weiners Savory Type Appetizing . . . 2 Lbs. 35c	
Eggs Grade A Lge. 57c Doz.	

# Youth Held For Draft Evasion

MEDFORD, Jan. 18 (AP)—Police holding Alton Dale Manning, 18, McMinnville, in Jackson county jail said Willis Wood, Medford FBI agent, reported the youth wanted in connection with draft evasion.

Manning, who told police he was a divinity student, was arrested yesterday on a warrant issued in Portland.

# UNCLE SAM TO HAND OUT 32,000,000 EXTRA RED POINTS

The greatest windfall of extra red points ever is going this month, and each month following, to American housewives throughout the country.

32 million extra red points, approximately, will be handed out by meat dealers to customers who turn in used fats in a great Victory drive for this essential of medicines, gunpowder, synthetic rubber, soaps, paints and a hundred other necessities on the battlefield and home front. For each pound of fat turned in, every housewife is entitled to 2 red points.

The need for used fats is still urgent. Women are urged to save every drop, every spoonful of grease possible and keep saving until final Victory over both Germany and Japan.

Coffee Nob Hill Whole Roast . . . 1-lb. bag 23c	Margarine Sunny Bank (2R) . . . 1-lb. pkg. 18c
Coffee Airway Whole Roast . . . 1-lb. bag 20c	Shortening Royal Satin . . . 3-lb. glass 59c
Tea Canterbury Orange Pekoe . . . 4-lb. pkg. 22c	Mayonnaise NuMade . . . 32-oz. jar 47c
Salt Snow-white iodised and plain . . . 26-oz. pkg. 7c	Salad Dressing Duchess . . . 32-oz. jar 35c
Rice Blue Rose fancy . . . 3-lb. pkg. 31c	Cudahy's Tang (3R) . . . 12-oz. can 32c
Flapjack Flour Alber's . . . 2 1/2-lb. bag 22c	Oats Morning Glory, Reg. and Quick . . . 48-oz. pkg. 26c
Pancake Flour Suzanna . . . 40-oz. pkg. 15c	Peets Granulated Soap . . . 33-oz. pkg. 26c
Flour Kitchen Craft, 5-lb. sack 25c	
Syrup Karo, Blue Label . . . 5-lb. glass 39c	
Syrup Sleepy Hollow . . . 16-oz. glass 21c	
Kraft American Cheese (12 Points) 1-lb. pkg. 40c	
Catsup Red Hill (30 pts.) . . . 14-oz. bottle 13c	
Tomato Juice Sunny Dawn (40 pts.) . . . 46-oz. can 21c	
Grapefruit Juice Town House Sweetened, No. 2 tin 13c . . . 48-oz. tin 30c	
Wheat Germ Fisher's . . . 1 1/4-lb. bag 25c	

Quaker Oats Reg. and Quick . . . 3-lb. pkg. 28c	
Ralston Cereal Whole Wheat . . . 1 1/4-lb. pkg. 21c	
Wheaties . . . 8-oz. pkg. 11c	
Post Toasties . . . 11-oz. pkg. 8c	
Bleach White Magic . . . 1 gal. bottle 32c	
White King Toilet Soap bars 3 for 14c	
Toilet Soap Lux, Bars . . . 3 for 20c	
Lint Starch . . . 12-oz. pkg. 10c	

**SAFEWAY NATURALLY FRESH PRODUCE**

Carrots Tender Crisp and Sweet . . . Lb. 7c	Grapefruit Texas Pink Meated Pound . . . 11c
Cabbage Firm For shredding for salads . . . Lb. 7 1/2c	Potatoes U. S. No. 1 Klamath Gems 100-Lb. 4.59
Parsnips Snow white Smooth . . . Lb. 9c	U. S. No. 2 Klamath Gems 50-Lb. 1.75
Rutabagas Delicious for Boiled Dinners . . . Lb. 6c	
Celery Crisp Utah Green type . . . Lb. 12c	

Earline Henderson  
Beauty Stylist from Portland  
Has Accepted a Position  
Assisting Be Haines  
at  
Vanity Beauty Shop  
109 N. 7th Phone 7101

**Cheerful Earful!**

Drinks mixed with Canada Dry Water even sound better. "PIN-POINT CARBONATION" gives them a sparkle you can hear... a liveliness that lasts.



**CANADA DRY WATER**

# SAFEWAY