

MEMORANDUM CARRIES ON LITTELL ROW

WASHINGTON, Nov. 29 (AP)—The justice department row over the attempted firing of Assistant Attorney General Norman Littell of Seattle, was carried forward today in a memorandum ascribing to Attorney General Biddle "conduct contrary to basic principles of government."

This memorandum, sent to the justice department, was described as having among other things that Biddle intervened in a department case in behalf of Thomas Corcoran, an early member of the deal brain trust now the law practice.

Biddle declined comment, saying he had not seen the Littell document. Corcoran was not reached for comment.

The attorney general asked last week for Littell's resignation on grounds of personal incompatibility.

But Littell, who has refused to quit, took the position in his role to the senate group, it is understood, that their differences stemmed from "my refusal to cooperate with conduct of the attorney general which was contrary to basic principles of good government."

Both officials yesterday submitted to the committee statements on their position which the committee had requested.

In his Biddle is reported to have denied his request for the resignation resulted from testimony Littell gave the committee when it investigated the surplus property and other war questions.

The two men, Biddle said, had long-standing personal differences which prevented harmonious handling of justice department affairs.

Footprints Under Body Not Preserved

SEATTLE, Nov. 29 (AP)—Two distinct footprints found beneath the hanging body of Guglielmo Olivetto, Italian service unit private who met death in a disturbance with negro soldiers at Fort Lawton recently, were not preserved.

William Orem, provost marshal at the fort at the time of the incident, testified at court martial proceedings yesterday.

He said it has been "found impractical" to make casts of the prints and that they had not been measured.

More than 30 Americans and 100 Germans were injured in the riot. Thirty-nine negro soldiers are being tried on charges of killing and three with rioting and murder.

Rotary Director to Visit Klamath

John B. Reilly of Whittier, Calif., director of Rotary International, will visit the Klamath Falls Rotary club and speak at the meeting Friday noon at the Willard hotel.


Reilly has been a member of the Rotary club of Whittier since 1928, and is a past president of that club. He has served Rotary International as director, district governor and committee member.

He is owner of the Fluid Packed Pump company, manufacturers of oil well pumping equipment in Los Nietos, Calif.

Halibut Stock Improvement Noted

SEATTLE, Nov. 29 (AP)—As a result there has been an improvement in the halibut stocks in fishing grounds, representatives of north Pacific halibut fishermen yesterday asked the International Fisheries commission to approve an increase of their million pounds in their annual catch limit.

The present limit is 51,000,000 pounds.



When Dishwashing looks like this!..

Remember that Constipation can make easy problems look hard! Constipation can undermine energy and confidence. Take Nature's Remedy (NR Tablets). Contains no chemicals, no minerals, no phenol derivatives. NR Tablets are different—different. Purely vegetable—a combination of 10 vegetable ingredients formulated over 60 years ago. Unrated or candy coated, their action is dependable, thorough, yet gentle, as millions of NR's have proved. Get a 25¢ Constipation Box. Caution: Take only as directed.

TONIGHT, TOMORROW ALRIGHT

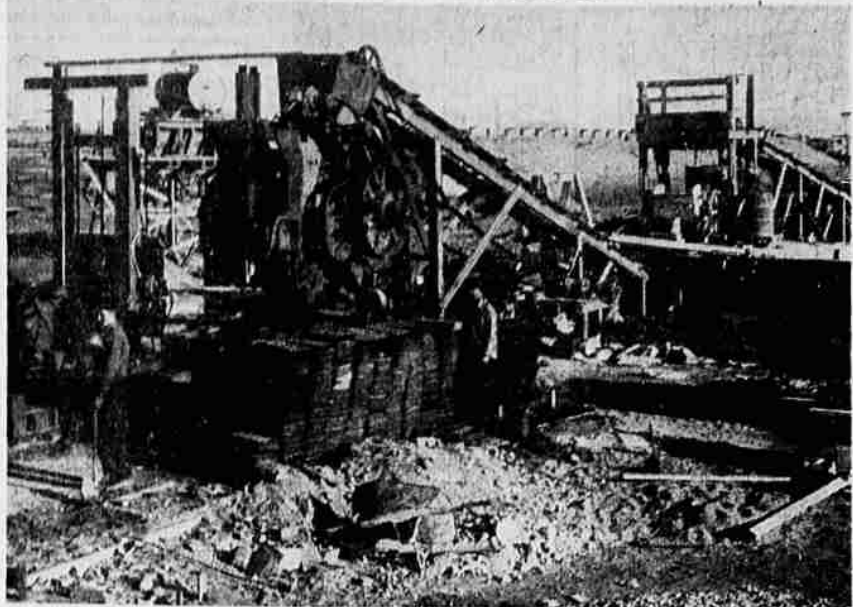
ALL-VEGETABLE LAXATIVE

Nature's Remedy

NR TABLETS-NR

ONE WORD SUGGESTION FOR ACID INDIGESTION—TUMS

Pumice Blocks Manufactured



Turning out from 350 to 500 pumice blocks an hour for the construction of the new cold storage plant at Tulalake is the block-manufacturing machine brought here from the east by Klamath Concrete Pipe company. Pumice is mined at Glass mountain, processed at the company's plant at Ainsha, and shipped from there directly to the building site. Manufacture of blocks from pumice, a local product, may become one of Klamath's most important industries.

Pumice Block Manufacture May Become Major Industry

By PHYLLIS COLLIER

The manufacture of construction blocks from pumice, the white "floating rock" typical of this area, may become one of Klamath's major industries.

The blocks, made of cement, ground pumice and a small amount of fine sand, have proved highly successful as a building product, as they are produced cheaply, have high insulation qualities and are fire-proof, light-weight and long wearing.

Pumice is a porous volcanic product—actually a hardened glass foam, which can be re-verted into glass by a smelting process. Large deposits of the substance are found near Tionesta and Chemult, where several local people own mining claims.

The first pumice bricks to be manufactured in the northwest was in 1937, when Frank Hamblet, then owner of the Klamath Concrete Pipe company, began experimenting with the product.

After working on the development of the high-type of block for seven years, Hamblet sold out last February to Floyd L. Summers, Calvin Peyton and Miles Stewart.

The new owners of the company sent east for a large pumice-block machine, which turns out from 350 to 500 creamy-white, uniform 8x8x16 inch bricks an hour. The machine is now set up in Tulalake, manufacturing blocks for the construction of the new storage plant there. The pumice is brought directly to Tulalake from the Ainsha plant by truck, in order that bricks might be made on the building site to save shipping costs.

At the company's large processing plant at Ainsha, on the Great Northern line, pumice mined at Glass mountain is screened, crushed and segregated. From there it is shipped by carlot to points all over the country.

Among buildings constructed here of the pumice blocks are those at Wi-ne-ma farms, the apartment house at Market and

Elm, the Specialized Service building on Main, the John Giacomini home at Merrill, the R. B. Mahan home on Newcastle and the V. L. Parks' home on Kane. The blocks have been used this spring for numerous pump-houses, milk-houses, potato cellars and other buildings where insulation is necessary, and the recently-completed FHA development, the Evelyn apartments in Medford was built of the pumice product.

Promoters of the pumice-brick industry are confident that the

blocks will be one of the most popular fire-proof products for post-war construction, and Nicholas Long, chairman of the chamber of commerce industrial development committee, feels that their manufacture will play a large part in the industrial development of Klamath county.

Photo Finishing

DEVELOPING
ENLARGING
PRINTING

Underwood's

PHOTO SERVICE
211 Underwood Bldg.

WOMAN PRESENTED WITH BRONZE STAR

Mrs. Zena Brughman, nurse aide at Klamath Valley hospital, was presented with the Bronze Star, awarded posthumously to her son, Tech. 4th Grade Beverly A. Gilmore, 29, in a ceremony held at the hospital at 2 p. m. Tuesday.

The presentation was made by Captain John L. Melton, post adjutant at Camp White, who was accompanied here by PFC Joseph D. Barber. Mrs. Brughman has also received the Purple Heart for her son. Young Gilmore was killed by a Jap sniper in the New Georgia group in 1943.

According to the citation, the Bronze Star was awarded Gilmore for meritorious services against the Japanese forces from January 10, 1943 to February 9, 1943. During this period, Gilmore performed outstanding services in his assigned duties as a mechanic in anti-tank company.

During the operation, due to shortage of transportation, Gilmore reclaimed and put into running order, two abandoned vehicles. One vehicle, a one-ton International truck, was repaired through Gilmore's mechanical ability and used until the cessation of combat. Another vehicle, a two and one-half ton GMC army truck, which had been captured and disabled by the Japanese, was found and repaired immediately by Gilmore. In addition to his assigned duties, during this period, Tech.

Proper Diagnosis Leads to Alcoholism Cures, Says Doctor

PORTLAND, Nov. 29 (AP)—Alcoholics can be successfully treated only if trained workers diagnose the factors that lead to excessive drinking, including age, occupation and marital status, Dr. Seldon D. Bacon said here.

Eva Burkhalter Attends Convention

Eva Burkhalter of the Klamath Union high school was among the representatives from Oregon, Washington, Idaho and Montana to attend the regional convention of the Delta Kappa Gamma convention which was held at the hotel Meany in Seattle, Wash., on Saturday and Sunday, November 25 and 26.

The main speaker was Dr. M. Margaret Stroh, national president of the organization, and Dr. Catherine Nutterville, vice-president, was chairman of the convention.

Over 250 were present for the three sessions, and Miss Burkhalter was the only member from the Alpha chapter.

Now She's Walking On Air

Every day, people who really suffer from tired, burning feet are learning the quick, thrilling comfort that lies in a jar of Ice-Mint. Under the touch of this frosty-white cream, you can actually feel tired muscles relax, as your feet respond almost instantly to its refreshing coolness. To help soften corns and calluses, there's nothing better than Ice-Mint. So get a jar today and enjoy the blissful feeling that comes with all-day foot comfort. At all drugists.

Proper Diagnosis Leads to Alcoholism Cures, Says Doctor

PORTLAND, Nov. 29 (AP)—Alcoholics can be successfully treated only if trained workers diagnose the factors that lead to excessive drinking, including age, occupation and marital status, Dr. Seldon D. Bacon said here.

Dr. Bacon, of Yale university's laboratory of applied physiology, told the alcoholic studies conference that fines and jail sentences as cures are "judicious."

Traditional methods have failed to solve the problem and "we must have greater clarification of types of alcoholism, testing of

treatments and new discoveries," he declared.

He said that 99 per cent of alcoholics fall into seven or eight classifications, and many are "good bets" for treatment.

Starts INSTANTLY to relieve MUSCULAR ACHES-PAINS

Soreness and Stiffness

For blessed prompt relief—rub on powerfully soothing Musterole. It actually helps break up painful local congestion. So much easier to apply than a mustard plaster. "No fuss. No muss with Musterole." Just rub it on.

In 3 Strengths **MUSTEROLE**

The **STAR BEAUTY SALON**

HAS 3 MORE COMPETENT OPERATORS

☆ **CORDIA NASH**
VELMA SELF
MABEL ELLIS ☆

GIVE ONE OF OUR LOVELY COLD WAVES FOR A CHRISTMAS PRESENT



\$4.95

Plus 20% Fed Tax

Sears packs smartness and value into new DRESSMAKER BAGS!

For instance, this novel tophandle bag is our budget version of a high style success!

Rayon cordette with woven plastic stripes.

A gorgeous heavy lucite clasp! Black or brown.

SEARS, ROEBUCK AND CO.

133 South 8th Street

Nervous, Restless

On "CERTAIN DAYS" of the Month?

If functional periodic disturbances make you feel nervous, tired, restless, "dragged out"—at such times—try famous Lydia E. Pinkham's Vegetable Compound to relieve such symptoms. It helps nature! Pinkham's Compound is also a grand stomachic tonic. Follow label directions. Worth trying!

LYDIA E. PINKHAM'S VEGETABLE COMPOUND

Announcing The OPENING

Of **The Kindergarten**

(Pre-School Education)

818 Walnut St. — Between Postoffice and S. 9th St.

It will be open for your inspection on Saturday, Dec. 2, and Sunday, Dec. 3

Dec. 4 -- Open For Enrollment

(Number Limited to 25)

Supervisor **RUTH WILLMOTH JONES**

Directors **Dr. and Mrs. Boyd F. Sprague**

HOURS **9 A. M. to 2:30 P. M.** (Lunch Included)

For Information **PHONE 6527**

HOLIDAY COLORS

DRESSES THAT FAIRLY SING WITH BRIGHT COLOR AND REFRESHING SMARTNESS. VIBRANT PASTELS AND FLATTERING HIGH SHADES TO MAKE YOUR HOLIDAY—AND HIS—GAYER, MORE MEMORABLE!

\$7.75

Festive Fashions are always low-priced at Sears! Here are smart dresses for every occasion and every figure.

Purchases totaling \$10 or more may be made on SEARS EASY PAYMENTS

SEARS, ROEBUCK AND CO.