

# Registration for OPA Rent Program To Begin Monday

Registration of all houses, apartments and small rooming houses, in compliance with the new price administration control program effective October 1, will open at 9:30 a. m. Monday at the war price rationing board. It was announced today by Don Wilson, associate rent director for Oregon.

With a corps of volunteer workers set to assist Klamath landlords in this first stage of the OPA rent program, Wilson announced that registration would continue daily from 9:30 to 4:30 p. m. until all dwellings are accounted for.

A time will be set later in the week for registration of hotels and larger rooming houses—those accommodating 20 tenants or more, Wilson stated.

To save time and gasoline for landlords in outlying towns, Marvin Hixon, examiner in charge of the Klamath Falls defense-rental area, will take to the road on Thursday with a supply of registration blanks.

Hixon will be in Chiloquin from 9 to 11 a. m. Thursday; in Merrill from 3:30 to 5:30, the same day. Place for registration in each community will be announced later, Hixon said.

The rent office will not discuss nor accept petitions for adjustment of any rentals until registration is completed, Wilson stated.

Instruction in registration is scheduled for tonight at 7:30, when rent control officials will meet with landlords in the council chambers, city hall.

Paul Landry, chairman of the chamber of commerce housing committee, will be chairman of tonight's meeting, to be devoted entirely to discussion and instruction on registration.

"We know that landlords and tenants want to know more about how the program will operate here, and we will give them that opportunity in a short while. But our immediate will concentrate on that tonight," Wilson said.

Service men and service wives have volunteered to help in the registration rush beginning Monday, but more volunteers can be used, Hixon said. Those willing to assist should report at the War Price and Rationing board office this week.

## Merrill Gridders Beat Tulalake 6-0 in Run of Haskins

The Merrill grid eleven scored out a 6-0 victory over Tulalake team Thursday at Merrill. Gene Haskins intercepted a forward pass in the third quarter on his own 45 and streaked down the sidelines for 75 yards and a only touchdown of the game.

Outstanding players for the team were Haskins and Bill Homan in the backfield and Al Fotheringham in the forward wall.

## Oregon Tentative Site For Convention

SALEM, Sept. 29 (AP)—Oregon probably will be the site of the 1946 convention of the International Association of Industrial Accident Boards and Commissions.

L. O. Arens, member of the Oregon state industrial commission, was elected vice president of the international group at the just-ended convention in Boston, and will succeed to the presidency next year.

According to tradition, the convention is held in the home state of the president.

Paul E. Gurske, also an Oregon commissioner, was elected to the international board of directors, succeeding Arens.

## Northwest Men In Towed Rescue Party

U. S. PACIFIC FLEET HEADQUARTERS, Pearl Harbor, Sept. 29 (AP)—Two northwest men—Lawrence Kasper, Genesee, Ida., and Baldwin Bonny, son of Mrs. George Kilderbrand, Portland, Ore.—were in the party of 16 volunteers participating in the rescue of Radio-gram George Tweed of Portland, Ore., from Guam July 10.

The rescue, after the navy man spent almost three years in a bid, came a week before the navy was invaded by U. S. forces.

The navy disclosed yesterday the rescue party, from the destroyer McCall, had been awarded the Navy and Marine Corps Medal.

## Winter Shortage of Heating Oil Looms

PORTLAND, Sept. 29 (AP)—A heating oil shortage this winter was predicted today by Clarence S. Beesmyer, president of Gilmore Oil company.

Gasoline, however, will be available in greater quantities since the European war ends, he added. Restorations in gasoline consumption on the Pacific coast as a result of the "big push" against Japan should—because of improved production methods—last only temporarily, he said.

The oil industrialist predicted tremendous postwar expansion in petroleum by-products manufactured in the west.

## Oregon Woolen Store Nite Shirts

Elastic Work and Dress SUSPENDERS

## TIN COATS TIN PANTS

Heavy Unionsuits HEAVY MACKINAW HEAVY JACKETS Work Raincoats Short Slicker Coats

## Oregon Woolen STORE

## Grace Wells Named To State GOP Group

Word has been received here that Neil Allen, chairman of the Republican State central committee, has appointed Grace M. Wells as a member of his state committee.

Mrs. Wells long has been active in republican affairs in this area and at present is state committee woman from Klamath county. The appointment goes into effect immediately, Mrs. Wells has been advised.

## Lt. Bob Puckett Father of Boy

Lt. Bob Puckett of Klamath county, pilot of a B-17 bomber in England, will get the good news soon that he is the father of a baby boy.

The youngster, Douglas John, was born to Lt. and Mrs. Puckett at Klamath Valley hospital September 28. He weighed 8 pounds 7 ounces, and is the grandson of Mr. and Mrs. Doug Puckett of Tulalake.

# PART OF U. S. IN AFFAIRS OF WORLD TOLD

MERRILL — The part that America will be privileged to play in world affairs and the disappearing autocracies in the period between World wars I and II was the subject for the Merrill Service club Tuesday by Dr. David J. Ferguson, world traveler, who for the next year will fill the pulpit of the Merrill Presbyterian church.

"America is bound to dominate the councils of the earth that will follow the present conflict," Dr. Ferguson stated, because America is still in a fluid state and because of its still growing force. He predicted that America could win the present war if all the other allies deserted from the cause for which we are fighting.

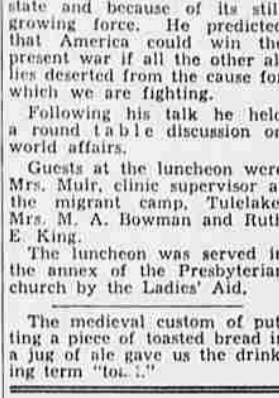
Following his talk he held a round table discussion on world affairs.

Guests at the luncheon were Mrs. Muir, clinic supervisor at the migrant camp, Tulalake, Mrs. M. A. Bowman and Ruth E. King.

The luncheon was served in the annex of the Presbyterian church by the Ladies' Aid.

The medieval custom of putting a piece of toasted bread in a jug of ale gave us the drinking term "toad."

## THOSE WAVES I'LL SAY! SURE GET AROUND, DON'T THEY?



WAVES are sent first in New York, for recruit training. Many receive advanced training in specialized work at other schools.

See Petty Officer Evelyn Moore of the WAVES at the local recruiting station in the Post Office from October 2 to October 13.



# Sears is Headquarters for OUTDOOR CLOTHING!

WIDE SELECTIONS . . SMART STYLES . . FINE QUALITIES . . LOW PRICES

## Our Finest Hercules Mackinaws

100% VIRGIN WOOL - 33-OZ. WEIGHT



**8.59** Superbly tailored of water-repellent 100% virgin wool in full 33-oz. weight. Cut extra roomy. Big, warm turn-up collar. Cozy muff pockets. Extra long . . . 32 inches. Blue, maroon, brown plaids. Sizes 34 to 48. Economy priced!

**10.95** Budget Priced

Capeskin Jacket Rugged Sheeplined Moleskins

**5.49** Worn alone or under another garment, it gives warmth yet leaves arms comfortably free. Sturdy moleskin lined with fleecy sheepskin lining. Two roomy pockets. 23 inches long. Sizes 34 to 48.

The durable split cowhide can "take it," year in, year out. You'll get more wear and comfort from it than you dreamed possible at the price. Favorite Cossack style. Fully lined with warm plaid cotton flannel. Dark brown. Length 25 1/2 inches. Sizes 36 to 48.

### MACKINAW JACKETS

#### Water-Repellent Wool Mackinaw

One of our most popular jackets because the 12 1/2% virgin wool and 87 1/2% reused wool fabric is heavy 33-oz. weight and plenty warm. Tailored in favorite Cossack style with roomy armholes and adjustable sides. Strongly taped seams. Bright blue plaid. **5.89** Sizes 34 to 48.



### UNDERWEAR

- Cotton Rib Unions**  
Medium weight cotton suits in long or short sleeves, ankle length. Sizes 36 to 46. **1.35**
- Fleece Lined Unions**  
Extra heavy fleece lined for cold winter days. Long sleeve, ankle length. Sizes 36 to 46. **2.10**
- 10% Wool Union Suits**  
Heavy weight ribbed unions with 10% wool for extra warmth. **1.89** Sizes 36 to 46.
- 25% Wool Union Suits**  
Long sleeve, ankle length unions in medium weight with 25% wool. 75% cotton. Sizes **2.35** 36 to 46.
- 50% Wool Union Suits**  
Heavy weight unions in 50% wool and 50% cotton. For the man who works outdoors. **4.25** Sizes 36 to 48.
- 25% Wool Shirts and Drawers**  
A warm rib knit garment for those who like two-piece suits. Shirts in 36 to 46. Drawers sized 32 to 44. Each **1.79**

### LEATHER COATS and JACKETS

#### Cossack Style! Supple Capeskin

A well styled garment at moderate price. Smooth, top quality capeskin . . . tanned to make it comfortably soft. Fully lined with lustrous, long-wearing rayon. Convenient zip front. Adjustable cuffs and waist, for comfortable fit. Tan. 25 1/2 in. long. Sizes **14.69** 34 to 48.



### SHOES - PACS

- 8 In. "Chippewa" Shoe**  
Black oil tanned leather with two leather outsoles and a rubber tap sole. Plain toe. **7.45**
- 8 In. Western Made**  
Lace to toe style with woodsman heel. Black oil tanned uppers and leather sole with rubber tap. **9.98**
- Lace To Toe "Chippewa"**  
8 in. shoe of black Pacific oil tanned uppers with two outside leather soles and a rubber tap sole. **8.45**
- 12 In. Lumberman's Pac**  
Heavy rubber foot and sole with leather upper. Fine for deer hunters. Not rationed. **4.98**
- Men's 8 In. Mill Shoe**  
Black cowhide uppers with leather midsole and rubber outsole. Goodyear welt. **7.98**
- "Chippewa" Work Shoe**  
Black oil tanned upper with double leather sole and "compo" tap sole. Sizes 6 1/2 to 10 1/2. **6.98**

**Sears, Roebuck and Co.**  
133 South 8th Street Phone 5188

# Fluhrer's

## Banana Cream Cake

A moist, luscious, creamy layer cake made with fresh ripe bananas. Iced with a creamy banana icing. This cake is a favorite with every member of your family, so place your order early and have a cake reserved for you.

**Only 69c**

Remember we have a nice assortment of fruit cakes in stock to make your Xmas boxes complete. Surprise those in the service with one of these rich delicacies.

*Klamath's Finest Bakery*