

# REVENGE PUNCH HITS AIRFIELD, HARBOR 2 DAYS

(Continued from Page One)  
ships, a medium cargo ship and two small cargo ships.  
Twenty-six probably were sunk—a destroyer, two large whale tankers, a large transport, 10 large cargo ships, and 12 medium cargo ships.  
A floating drydock also probably was sunk.

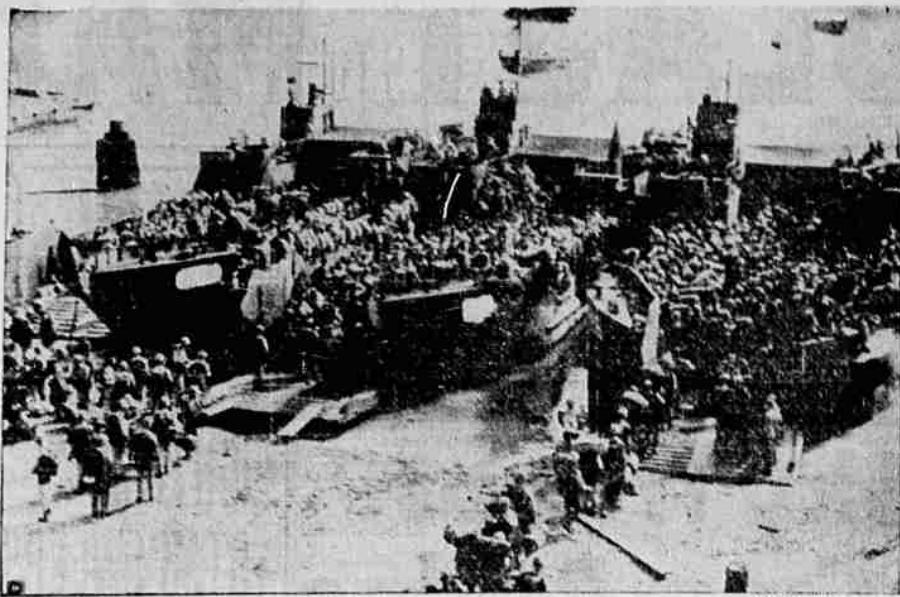
**Ahead of Invasion**  
The Mitscher-Halsey armada, which since August 30 has accounted for 258 Japanese ships and 908 planes, the bulk of them in the Philippines area, struck ahead of invasion forces gathering in advanced bases south and east of Mindanao.  
Tokyo radio said 150 carrier planes attacked in three waves in the Manila sector in the morning and 290 in the afternoon. It claimed 24 were down. Tokyo announced that the puppet president Jose P. Laurel, declared martial law throughout the Philippines, effective the day of the raid.

**Confidence**  
The dispatch of such a huge fleet toward the Philippines reflected confidence in the outcome of the invasion of the Palau, 515 miles east of Mindanao, where marines are locked with ridge-entrenched Japanese in one of the most savage engagements of the Pacific war.  
Nimitz, in a communique preceding the special one on the Manila raid, said the leathernecks on Peleliu in the southern Palau have won all the east shore and two small islands nearby, and have killed more than 6000 Nipponese. But 3000 more Japanese, taking advantage of the most difficult terrain encountered by the Americans anywhere in the Pacific, are putting up a bitter, bloody stand on the west coast.

**Ridge Key**  
(The key to the situation is a ridge called "Bloody Nose" by the marines. Today in a broadcast from Peleliu, William Ewing, Blue network correspondent, said the conquest of that ridge in the Umurbrogol mountains was but a matter of hours.)  
Demonstrating that the United States has the strength for a diversity of actions, the day of the Manila attack, cruisers and destroyers off Peleliu supported the marines in their bitter struggle by pouring shells into the enemy network of defenses.

**Air Umbrella**  
A constant umbrella of American planes at the invasion scene added their bombs to the attack, after which the marines captured six more trench mortars and 31 machineguns. Other planes swung north to prevent Japanese air bases elsewhere in the Palau from interfering at Peleliu.  
South of Peleliu, Angaur island has been completely conquered by the 81st army division against much lighter opposition than that massed against the marines. There 800 Nipponese have been slain.  
In the Southwest Pacific,

# Marines Head for Invasion of Palau Islands



(NEA Telephoto)  
Leathernecks of the First Marine Division, veterans of Guadalcanal and Cape Gloucester, board Palau-bound assault vessels at a South Pacific base. Establishing a beachhead of nearly 1 1/2 miles on Peleliu Island against stiff enemy resistance, they are closing in on principal Jap airdrome of the Palau group. Marine Corps photo.

where Gen. Douglas MacArthur has gained a base at Morotai, within 300 miles of the Philippines, he announced today the dropping of 215 tons of explosives on adjacent Halmahera island and on Ceram and Celebes.

# NAZIS STALL DEMPSEY TANK RELIEF FORCES

(Continued from Page One)

ing some relief to the paratroopers, picking off surrounding German targets.  
The desperation-born stiffening of the German stand was reflected along the whole 500-mile allied front as well.  
Lt. Gen. George S. Patton's third army power drive 19 miles beyond Nancy plowed into fresh enemy armored forces in the Arrancourt area. Americans and Germans fought through the fourth day of the greatest tank battles since Normandy.

**Tank Battle**  
American tankmen in that area ran into 45 more German tanks as the morning mists lifted, after destroying 105 in three days there.  
The German communique said the allied push from Nijmegen had been halted, and that an all-out attack had been launched with the aim of annihilating the isolated remnants at Arnheim, identified by Berlin as the British first airborne division. The Germans said yesterday the division had largely been wiped out.  
**Reports Vary**  
Another German broadcast said the push from the south already had linked up with the Arnheim force. A third said the Arnheim force already had been liquidated. Again it was de-

clared that the fierce fight was continuing and that German forces everywhere in Holland had gone over to the counter-attack.  
Allied dispatches saying the air-borne force still held the Arnheim bridge was inconclusive, as they were dated two days ago.  
(Against this the BBC quoted a front reporter today as saying the Germans still held the bridge, but British troops had established a bridgehead on the north side and had the span itself under fire. The Germans were attempting to flee north over the bridge, said this broadcast recorded by CBS.)

**Broaden Corridor**  
Meanwhile, the British shoved out on both sides of Eindhoven, to their rear, and broadened to 25 miles the base of their 45-mile deep corridor across Holland through which a ten-way flow of men and armor was streaming toward the river crossing nearest Berlin.

Someren, 10 miles east of Eindhoven, and Wintelre, six miles westward, were reached, and the Waal crossing was made secure by wiping out in Nijmegen itself a pocket of Germans which advance elements had not bothered with.

# Indian Summer Weather Here

Indian summer weather prevailed throughout the Klamath basin and Friday at 2:20 this afternoon the mercury rose to 69 degrees and was still climbing.  
Autumn will make its official debut at 9:02 tonight, arriving, according to weather bureau forecasts, with fair skies and a prediction of slightly warmer temperatures Saturday.  
Prospects for a warm weekend loomed bright.

Classified Ads Bring Results.

# KASSEL, MUNICH BASHED BY BOMBS

(Continued from Page One)

needed German communication center for evacuation of the Balkans.  
Kassel, a Prussian rail center of 217,000, lies 160 miles southeast of Arnheim in Holland where a definite battle to outflank the Siegfried line progressed.

**Mustang Convoy**  
Several hundred Mustangs convoyed the Flying Fortresses and Liberators. First reports made no mention of air fights. Bombing was through overcast preventing observation.

At least 30 war factories have been reported blown out in previous attacks on Kassel. It is the home of the large Gerhard Fieseler aircraft plant and a locomotive works. Major rail lines lead into the industrial Ruhr basin from Kassel, as well as to the western front.  
German reports said other planes, probably from Italy, were attacking Bavaria.

**Holdouts Hit**  
The Germans also said that 600 or more British bombers had attacked their holdout garrisons on the French channel coast at Cap Gris Nez.  
German fighters ventured out in greater strength yesterday in defense of the Reich itself, and 30 were shot from the cloudy skies by alert American fighters.  
Four American planes were listed as lost.

An airplane pilot who has been flying in the dark for more than an hour can see the flare of a match 12 miles away.  
An average tire contains as much rubber as is required for 55 pairs of army air corps goggles.

# SOVIET PLUNGE NABS ESTONIA CAPITAL CITY

(Continued from Page One)

ments along the Gulf of Finland and the 30-mile isthmus between the gulf and Lake Peipus had been captured. Russians then were reported on the outskirts of Tapa on railroads fanning out to Leningrad, Tallinn and Riga.  
(A Helsinki dispatch said fires set in Tallinn by the retreating Germans were visible from the north shore of the Finnish gulf, and violent explosions were heard incessantly.)

**Enveloping Maneuver**  
Far to the south on the eastern edge of the Hungarian plain other Russian forces began a vast enveloping maneuver 138 miles from bomb-shattered Budapest designed as trapping from the rear all German and Hungarian forces pinned down in northern Transylvania.

Marshal Leonid A. Govorov's Estonian blitz was believed equalled and perhaps surpassed in strategic importance by Marshal Rodion Y. Malinovsky's move in western Romania imperiling Hungary, last big satellite nation still in Hitler's diminishing camp.

# Brower's Wife Returns to U. S.

WASHINGTON, Sept. 22 (AP)—The justice department said today that Mrs. Raissa Berkman Browder, wife of Earl Browder, former leader of the communist party of the United States, has returned to this country from Canada on a visa.  
Her trip to Canada and her return was a technical device to establish her legal right to residence in the United States.

# WEATHER

	Max.	Min.	Preclp.
Eugene	69	46	.00
Klamath Falls	65	34	.00
Sacramento	74	47	.00
North Bend	70	52	.00
Portland	64	48	.00
Medford	71	52	.00
Reno	71	33	.14
San Francisco	70	55	.00
Seattle	68	57	Trace

The average duration of an earthquake shock is estimated by experts at 45 seconds.

Seventy-five per cent of the talkies exhibited in Portugal are of American origin.

# ESQUIRE

Box Office Opens 1:30 - 6:45

# --NOW-- PLAYING

IT TOOK 1,000 ARTISTS 3 YEARS!

WALT DISNEY'S FIRST FEATURE



STARTS SUNDAY

SONS OF FURY! Making today's headlines and tomorrow's history!

MARINE RAIDERS

starring PAT O'BRIEN ROBERT RYAN NUTH HUSSEY

with FRANK M'HUGH • MACLAINE

# WOMAN CLEARED OF ASSAULT CHARGE

PORTLAND, Sept. 22 (AP)—Addie Weeks Horton, Indian woman of Klamath county charged with assault with a dangerous weapon, was cleared today. A federal grand jury here returned a not true bill.

Mrs. Horton was arrested by Indian Officer John Arkell in connection with the knifing of Herbert Horton, her husband, which occurred at MODOC Point March 31. She was arraigned by Bert C. Thomas, U. S. commissioner, on a charge of assault with a dangerous weapon, and sent to Portland for her hearing.

Horton was brought to the hospital here after a resident of MODOC Point had found him bleeding severely on the floor of his cabin, which was strewn with broken liquor bottles. He had been stabbed twice with a paring knife, but his wounds were not fatal.

# Morse to Visit Klamath Soon

Wayne Morse, republican candidate for the office of United States senator, will spend Friday, October 6, in Klamath county and that night will speak at a meeting to be arranged by members of his committee. Details will be announced later.  
Phil Hitchcock is Klamath county chairman of the Morse for senator committee.

# EIGHTH ARMY STAB SWEEPS IN PO VALLEY

(Continued from Page One)

steadily northward and keeping pace with U. S. forces farther inland. The important town of Pietrasanta was captured, 19 miles northwest of Pisa. The Brazilians were also reported well up on 4000 foot Mt. Prano, six miles east of Pietrasanta.  
The Brazilian gains made possible fifth army use of the vital Lucca-Camajore-Pietrasanta highway as a feeder for a further drive along the Ligurian coast and into the hills overlooking that coast.

**Cost Heavy**  
The vain effort to hold the sagging eastern end of the Gothic line cost the nazis heavily in manpower.

An official frontline report said the 71st and 98th German infantry divisions "have lost the greater part of their effective fighting strength."  
"Losses heavier than Cassino were inflicted on the first parachute division and four other divisions, including the crack 26th panzer division, which was reduced to half of its original strength."

Classified Ads Bring Results

# AMERICAN LEGION DAY TO BE HELD

Sunday will be American Legion day at the service center on Main street and both Legionnaires and members of the auxiliary will be on hand to take care of the service men and women.  
Hours will be from 10 a. m. to 11 p. m.

Those who will attend the American Legion day are Mrs. Paul Otterbein, Mrs. and Mrs. Carl Schubert, Mrs. and Mrs. Jack Miller Cooper, Mrs. and Mrs. Jack Callagher, Mrs. Phil Mutschbacher, Mrs. Phil Mutschbacher, L. L. Loomis, Mrs. Earl Templar, Mrs. Ann Funk, and Mrs. Angus Nelson.

# PELICAN

PHONE 4372

Box Office Opens 1:30 - 6:45

# --NOW--

trouble!

Jealousy seethes and hatred flares...over a man! A sad, stirring story of today's teen-agers who can't wait to grow up!



EXCITING! STARTLING! FRIGHTENING!

# YOUTH RUNS WILD

BONITA GRANVILLE KENT SMITH - JEAN BROOKS GLENN VERNON - TESSA BOND

# --2ND HIT--

DEATH SEALS LIPS OF MURDERED MODEL!



Mystery with a thrilling new slant...with flowery eye-witnesses and the Law completely baffled!

# NIGHT OF ADVENTURE

with Tom CONWAY

AUDREY LONG EDWARD BRIDGES LOUIS BRIDGES

STARTS SAT.

MIDNIGHT

Freddie MARCH portrays the creator of Tom Sawyer and Huckleberry Finn...

THE ADVENTURE OF MARK TWAIN

SMITH CRIBB

ACRES OF FREE PARKING

# TOWER

FOR INFORMATION DIAL 8484 OR 4547  
BOX OFFICE OPENS 6:45 P. M.

• LAST TIMES TODAY •  
"Cowboy And The Senorita"  
AND  
"TAMPICO"  
--SATURDAY ONLY--

Here are those boys again...in their latest all-new adventure!

**HENRY ALDRICH** Plays *Cupid*

**JIMMY LYDON**  
**DIANA LYNN**  
**CHARLES SMITH**  
**JOHN LITEL**  
**VAUGHN GLASER**  
**VERA VAGUE**

2nd Hit  
"ACES WILD"

# RAINBOW

FOR INFORMATION DIAL 8484 OR 4547  
BOX OFFICE OPENS 6:45 P. M.

--ENDS TODAY--  
"So Proudly We Hail"  
—Plus—  
"Petticoat Larceny"  
--SATURDAY ONLY--  
A TWO-FISTED TERROR ...RIDES AND FIGHTS ALONE!  
**BILL ELLIOTT**  
in  
*Hidden Valley Outlaws*  
with "Gabby" Hayes  
Another BIG HIT

HITLER'S YOUTH DEFIED!  
*They Live in Fear*  
OTTO KRUGER  
Clifford Seven-Pat Partick

WALT DISNEY'S FIRST FEATURE

# Snow White

AND THE SEVEN DWARFS  
IN TECHNICOLOR

STARTS SUNDAY

SONS OF FURY!  
Making today's headlines and tomorrow's history!

# MARINE RAIDERS

starring PAT O'BRIEN ROBERT RYAN NUTH HUSSEY  
with FRANK M'HUGH • MACLAINE

# PINE TREE

FOR INFORMATION DIAL 8484 OR 4547  
CONTINUOUS SHOW DAILY  
BOX OFFICE OPENS 12:30 P. M.  
--NEW TODAY--

# RIP-SNORTIN' Action!

with **BOB STEELE**  
**HOOT GIBSON** • **CHIEF THUNDERCLOUD**

COMPANION FEATURE  
**CURSE of the CAT PEOPLE**  
with **SIMONE SIMON**  
**KENT SMITH**  
**JANE RANDOLPH**  
MYSTERY! HORROR!

Tuesday ★ Wednesday  
On Our Stage! In Person  
**KEN MAYNARD**  
—WITH HIS—  
Wonder Horse "Tarzan"

Mystery with a thrilling new slant...with flowery eye-witnesses and the Law completely baffled!

DEATH SEALS LIPS OF MURDERED MODEL!

with Tom CONWAY  
AUDREY LONG EDWARD BRIDGES LOUIS BRIDGES

STARTS SAT.

MIDNIGHT

Freddie MARCH portrays the creator of Tom Sawyer and Huckleberry Finn...

THE ADVENTURE OF MARK TWAIN

SMITH CRIBB