

FRENCH TAKE BRETON TOWNS; TRAP NAZIS

(Continued from Page One)

ported in a turmoil, with collaborationists attempting to flee the city and armed guards patrolling the streets. The AFI (Independent French agency) quoted a dispatch from Bern as saying 10,000 French patriots were "advancing toward Vichy" and that they were being joined en route by hundreds of recruits.

The same dispatch asserted that other patriot forces of the interior were moving on Bordeaux.

YANKS RAID JAP ISLAND DEFENSES

(Continued from Page One)

Ceram, air patrols sank eight coastal craft — "small sailing vessels, indicative of the extent to which the Japanese have been forced to press any available shipping into service," a MacArthur spokesman said.

Shipping Hit

Adm. Chester W. Nimitz announced meanwhile that army Liberators hit Japanese shipping near Paramushiro in the Kuriles Friday and also bombed the airstrip at Suribachi. They fought off 15 to 20 enemy planes, shooting down at least three and possibly eight.

Navy search planes bombed installations on Shumushu and on Araito islands, off northern Paramushiro, Saturday. They also sank a patrol ship.

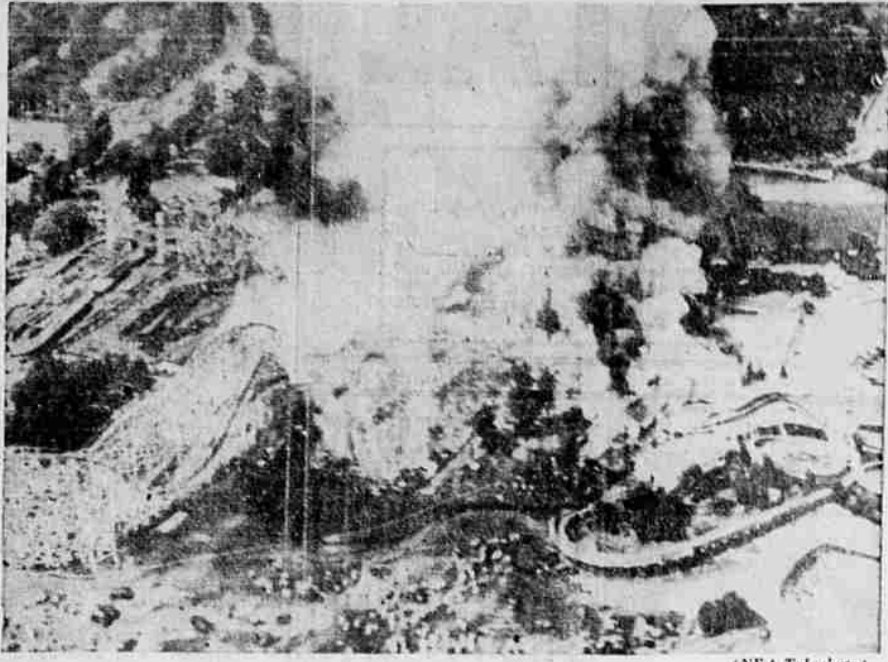
Iwo Jima Raided

Marianas-based bombers raided Iwo Jima, in the Volcano group, Pagon, in the northern Marianas, and Rota island, south of Saipan, Sunday. One of the Liberators which plastered Iwo's airfield with more than 35 tons of bombs was shot down by aggressive enemy fighters.

Despite unfavorable weather, other planes attacked bypassed Japanese positions on New Guinea, New Britain, Bougainville, Palau, the Marshalls and Nauru.

At Honolulu, Elmer Davis, director of the office of war information, observed upon his return from Saipan and Guam that "More Tokyo governments will have to fall before the Japanese are ready for the unconditional surrender we shall demand."

New York Amusement Park Razed by Fire



Flames sweep Palisades Amusement Park, New York's third major fire in three days, driving out 25,000 Sunday pleasure seekers. More than 100 persons were injured, 25 of them seriously, and three-quarters of the park was destroyed with damage estimated at \$750,000. U. S. Navy photo.

Sham-poo



(U. S. Army-NEA Radio-Telephoto) Bent over a G. I. helmet, WAC Selma Herfor of New York City gets what they call a shampoo in France from WAC Claire Dickman of San Francisco. It's Claire's turn next.

The Road to Berlin

- By The Associated Press
- 1—Russian front: 322 miles (measured from eastern suburbs of Warsaw.)
 - 2—Italian front: 603 miles (measured from Florence.)
 - 3—Normandy front: 626 miles (measured from Soignolles.)
 - 4—Southern France: 680 miles (measured from Cannes.)

Wiesendanger, Roycroft, to Run For Mayor Here

(Continued from Page One)

youngsters coming up and the boys coming home from the war."

Meanwhile, it began to look as if the city treasurer's job might go begging for candidates at the November election. City Treasurer Ruth Bathiany said some time ago she will not run, but no one else has indicated publicly an interest in succeeding her in the \$135 a month part-time job.

Interesting Question

What might happen if no candidates should file poses a subject for interesting speculation. Mrs. Bathiany could serve until her successor qualifies, which could be for another term if no immediate successor qualifies, but she has indicated she wants to leave the office and would probably resign under those circumstances.

No councilman candidates have as yet appeared on the horizon.

Classified Ads Bring Results.

HOOD TESTIFIES AT HEARING ON HEAT

(Continued from Page One)

the stand Wednesday morning at the hearing conducted by George N. Flagg, state public utilities commissioner, and David Don, also from the public utilities office. The hearing concerns the proposed rate increase and the hogged fuel differential asked by the heating plant.

City Against Discontinuing

J. H. Carnahan, city attorney, went on record at the beginning of the hearing by saying that the city did not want high pressure steam service discontinued and the cost should be based on the fuel price at the purchasing point.

The proposed tariff asked by the heating company will allow for an approximately 15 per cent increase over the present rates, which would bring revenues up to slightly above the cost of fuel and its handling.

Will Comply

It was brought out, however, that the company would be willing to accept the rates that the commission decided were fair after hearings have been completed.

It was also brought out by Commissioner Flagg that under the proposed tariff regulations, the company must furnish high pressure service to users needing it, as long as fuel is available.

Fuel Available

At the hearings on service complaints in June, it was stated by witnesses that in some instances, the heating company did not pick up all the fuel that was available at the time and then later had to close down because of lack of the fuel.

It has been claimed by heating company officials that the rates charged by the local company are out of line with other companies on the Pacific coast.

The hearing was being continued on Wednesday afternoon.

RABBITS USE "RADAR"

When frightened, rabbits stamp several times on the ground with their hind feet, making a sound which can be heard a long way off. This is a danger signal to fellow rabbits, who scamper off to safety.

Even Judges Pay Fines

PORTLAND, Aug. 16 (AP) A man presented a traffic tag to a police department clerk and handed over money to pay his fine.

"Name, please?" asked the clerk.

"Seabrook," the offender replied, "Judge John B."

"Thought judges didn't have to pay their fines," the clerk remarked.

"They do when they're guilty," replied Portland's municipal judge.

Broadcast From Air Station Heard Over Blue Network

A broadcast from the Klamath naval air station Tuesday evening went on the air to radios all over the country via NBC's Blue network when Jan Garber

and his orchestra broadcast the Coca Cola's "Spotlight Bands" program from the station.

The program also went over local radio station KFJI and Klamath residents heard the Spotlight Bands announcer tell that the program was being broadcast in "mile-high Klamath Falls, in the midst of Oregon's snow-capped mountains."

Damage to Crops Prevented by Quick Repair of Canal

Serious damage to Mallin's potato crops was prevented by the immediate repair of a break in the main irrigation canal of that area Friday night, reports John Reber, county commissioner.

As it was necessary that the wash-out be repaired within two days, the dragline was called from its job between Dairy and Bonanza. About 4000 yards were filled in, and water was running in the ditch by Monday night.

Classified Ads Bring Results.

ESQUIRE TOWER
Phone 4567 Box Office Opens 1:30-6:45

Last Times Today At Both Theatres

From The Moment They Met... It Was Murder!

Fred MacMURRAY
Barbara STANWYCK
Edward G. ROBINSON
CLASH IN
DOUBLE INDEMNITY

with Jean Heather · Tom Powers
Byron Barr · Richard Gaines
Fortunio Bonanova

PINE TREE
Box Office Opens 12:30
Continuous Show Daily

NOW PLAYING

Robert Donat and Jean Parker in **"THE GHOST GOES WEST"**

ALSO

SCARLET PIMPERNEL
Starring Merle Oberon and Leslie Howard

And Latest News Selected Short Subjects

Grain Fire Losses Hit Record High

SPOKANE, Aug. 16 (AP)—Grain fire losses so far this year in eastern Washington are nearly four times greater than for all of 1943, Chief Deputy Fire Marshal L. L. Bergunder reported today.

He said \$128,000 worth of wheat had been destroyed in fires razing 3647 acres.

Most of the blazes started in tinder-dry grass and spread to nearby grain fields, Bergunder said.

GREAT ROAD BUILDER

Colbert, who became controller of France in 1861, was the great road builder of his nation. He ordered compulsory labor for all able-bodied peasants and built 15,000 miles of roads.

Although we use both artificial and natural light every day, no one knows what light is.

PELICAN
PHONE 4572
Box Office Opens 1:30-6:45

Starts Thursday

Meet the People

Lucille BALL · POWELL
DORIS HINES & Her City Slickers
MURROE & His Orch

Woman to Undergo Psychiatric Exam

SEATTLE, Aug. 16 (AP)—Mrs. Earl Flynn, 27, was to undergo a psychiatric examination today, Acting Police Capt. J. M. McCarthy said, after her seven-week-old son died in a hospital of a hammer attack.

McCarthy said Mrs. Flynn admitted the attack, saying she couldn't "stand the strain" of caring for children and "did not think she was fit to be a mother."

Food Consumes Most Fats

Americans use about 11,000,000,000 pounds of fats and oils a year. Of this, 67 per cent is used in the form of food, 20 per cent as soap, 8 per cent in paints and varnishes, and the rest in varied products.

TOWER
FREE PARKING PHONE 4564
Box Office Opens 6:45

THURSDAY AND FRIDAY

FUNATICS!

Three of a Kind

BILLY GILBERT
SHEMP HOWARD
MATT ROSENBLUM
JUNE LANG

ALSO

THE SAINT COMES TO GRIP WITH HIS MOST DANGEROUS FOE!

THE SAINT Meets THE TIGER

SINCLAIR
GILLIE

RAINBOW
Continuous Show Sat-Sun.
Box Office Opens 12:30

Last Times TODAY

BOGART in SAHARA

AND

THE GHOST THAT WALKS ARODE
with ARTHUR LAKE · Janis Carter

Starts Thursday

ALICE FAYE · CARMEN MIRANDA

THE GANG'S ALL HERE

BENNY GOODMAN and his Orch · JAMES ELLISON · BAKER

2nd BIG HIT

RADIO'S MASTER OF MYSTERY!

RICHARD DIX
in **THE WHISTLER!**

J. CARROL NAISH
Gloria STUART

ESQUIRE
Phone 4567
Box Office Opens 1:30-6:45

Opens Thursday

WAL STARCH MY SOCKS STIFF!
JUDY HAIN'T DONE HIT AGAIN!

JUDY CANOVA
in COLUMBIA
LOUISIANA HAYRIDE

with ROSS HUNTER · RICHARD LANE
LLOYD BRIDGES · HOBART CAVANAUGH

ALSO

Amazing PRELUDE TO INVASION!

James Mason
Carole Lombard
in **Candlelight in ALGERIA**

RAMONNOVA
Lovell Stamp-Taylor

Box Office **PELICAN** Opens 6 P. M.

TONIGHT

ON OUR STAGE

Selection Of

"Miss Klamath"

PARADE of STARS

Stars of KLAMATH

Stars of Hollywood

ON the SCREEN

"Stars on Parade"

—Starring—

Larry Parks * Lynn Merrick * Ray Walker * King Cole Trio

Stage Show 8:30 P. M.

TONIGHT

Jean Bell
Grayce Van Clave

Mary Lou Sexton
Isabel Corr
Edrie Smith
Virginia Lee Bennett
Janet Protzman
Doris Phillips

Glennys Jorg

Starry Mabrey
Rosemary Nelson
Carol Newell
Virginia Howard
Betty Larrick
Pat Brown