

# LACK OF CARE CAUSES FIRES BY ROADSIDES

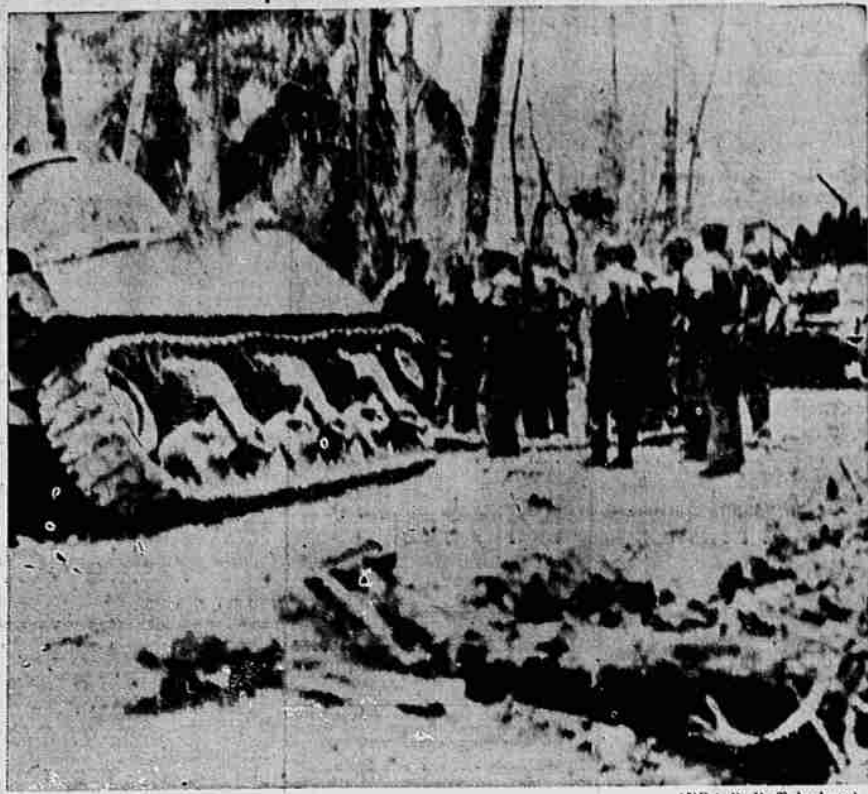
Travelers on eastern Oregon highways have been sabotaging the war effort, said Charles Mack, Keep Oregon Green county chairman, in commenting today on the large number of roadside fires in grass and wheat lands in this section which have been started by a carelessly thrown cigarette or match from passing cars.

"I doubt if any of the several fires in this county which have burned into valuable grain and grasslands were started intentionally," the county leader pointed out. "In the majority of cases these fires were started when some smoker flipped his lighted match or cigarette out the car window instead of using the ashtray. It is the duty of every person to help stop these fires which are destroying our much needed food supply."

"With eastern Oregon drier than usual because of a shortage of rainfall, the danger this summer is greater than ever," the Keep Oregon Green leader stated. "Manpower is equally short and much needed in the harvest. Men can not be spared for fire fighting. One carelessly started roadside fire last month destroyed 20,000 acres of ripe grain and 10,000 acres of grasslands. This is pure criminal carelessness."

"After the war, food will be critical because this nation will no doubt be called upon to help feed liberated Europe," the fire prevention spokesman said. "Let every man and woman in this county do his share to Keep Oregon Green."

# Tank Traps Slow Marine Advance on Guam



Tank traps dug by retreating Japanese troops on Guam slow the advance of this Marine armored unit. One tank has toppled into the trap and shell hole at lower right blocks column's progress until tank can be righted. This first action picture of Yank invasion of Guam was radioed from Honolulu. (NEA Radio-Telephoto)

# NAVY NURSES NOW ON DUTY AT BARRACKS

A detachment of nine navy nurses, all from the San Diego naval hospital, reported to the Marine Barracks today for duty in the dispensary.

The nurses, first women to be stationed at the barracks, will be on general duty in the wards, surgery and with dependent cases at the hospital. They were ordered here by the navy bureau of personnel.

Senior member of the detachment is Lieut. (jg) Genevieve P. Albers, (NC), USN, and others are Ensigns Mary Eileen Cook, Elsie Elizabeth Egan, Edna Janet Pleschner, Margaret Elizabeth Reed, Irene May Reiner, Irma F. Sofranko, Alberta Laura Stein and Frances Ann Steve.

A wing of the bachelor officers' quarters at the base has been set aside for the nurses' living quarters.

## Service Resumed To Pendleton

PORTLAND, Aug. 10 (AP)—Bus service between Portland and Pendleton was resumed today as Union Pacific stage driv-

ers returned to work after a one-day walkout. The AFL drivers, who abandoned buses at midnight Tuesday in support of their demand that regular and not extra employees be placed on second section runs, began returning to work late yesterday afternoon after a conference with the army and the federal conciliation service.

The federal conciliation service will hold a hearing with drivers and company representative on the question August 21. Classified Ads Bring Results

PORTLAND, Aug. 10 (AP)—A final report showed sales of the Fifth War Bond drive in Oregon netted \$761,000, 150 per cent of quota, state headquarters reported today. Bond sales rose 100 per cent of quota, totaling \$28,000.

# Secret of Russian Advances Described By General Deane

WASHINGTON, Aug. 10 (AP)—American trucks are carrying "a good 50 per cent" of the highway-borne military supplies to the Russian front, the chief of the American military mission in Moscow reported today.

Crediting the vehicles with a tremendous part in the surging advance of the red army, Maj. Gen. John R. Deane told a news conference those gains can be explained in full only as a westward advance of the whole Russian people.

To keep the armies rolling, supply lines must be rebuilt, he said, and a tremendous amount of army supply has been kept moving on the railroads. What cannot be moved by rail, however, moves on the highways, and "everything that rolls—from peasant carts to motor trucks"—is used.

Organization Great The ability of the soviet army to keep such a "polyglot mass" of transportation moving in orderly fashion, Deane commented, is a magnificent tribute to the discipline and organizational ability of the Russian people.

The general, temporarily back in this country after ten months in Russia, said there were four points he wanted to emphasize about the war on the eastern front.

"1. The Russians are in this war 100 per cent—you will see in Russia total war if you are ever going to see it;

"2. They have reached a very high degree of military competency;

"3. They are very appreciative of American assistance and are using it up to the hilt;

"4. They like Americans, they

want to be friends, and they cooperate with us in every way."

## Answers Question

Deane said his first point, total war, answered the question most frequently asked him since he returned: How the Russians are able to keep their tremendous advances rolling and still maintain their supply.

"The answer," he said, "is that the whole population is in this war. As the armies go along, the whole people just surge forward.

## Defend Only Centers

"The Germans have defended the centers of population, but they have not had the forces to defend the areas between them. Those areas have been controlled by Russian partisans, and they have done a swell job.

"The Germans, for instance, destroyed all bridges—but the civilian population comes right along and fixes them."

American supplies are welcomed enthusiastically throughout Russia, Deane said, rating the three most important items in order as trucks, aircraft and food.

Cooperation is complete and prompt in everything that will contribute to victory, Deane continued, but the Russians "are not inclined to pass out information just for information's sake—if we ask for something that they think will not contribute directly to winning the war, they're likely to tell us just that they haven't got time to answer."

## Typewriter Compliments

A battleship normally carries 59 typewriters; an aircraft carrier, 55; a cruiser, 30; a destroyer, seven. But these quotas have been cut in half.

## Action to Halt Anti-Trust Bill Violations Eyed

SPOKANE, Aug. 10 (AP)—Declaring that the Sherman anti-trust act does apply to railroads and to freight rates "and the supreme court has so held," United States Atty. Gen. Biddle told the Spokane Bar association yesterday the government was contemplating action against the western railroads to halt "violations" of the act.

Met at the train as he left for Seattle last night, he refused to comment further on his brief statements before the bar association.

"An investigation is now being ended of western railroads," he said in his address.

## Halt On Liquor Sales in New York Urged For V-Day

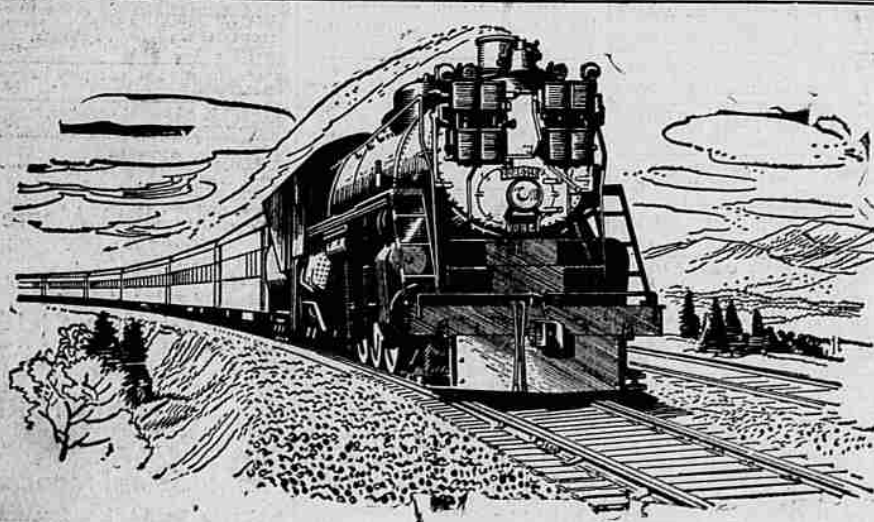
NEW YORK, Aug. 10 (AP)—The hotel association of New York City has recommended that its members sell no alcoholic beverages for 24 hours after receiving news that fighting has ended in Europe.

A similar proposal is under consideration by the United Restaurant Liquor Dealers association of Manhattan, said its president, Joseph Maguire.

## COMMANDER ELECTED

PORTLAND, Aug. 10 (AP)—The new commander of the 8 and 40, fun group of the American Legion auxiliary, is Mrs. Frank Allen, Seaside, who was elected here yesterday.

The session was a prelude to the Legion state convention which opened today.



# Our Day

- In one day on the Great Northern Railway system: Passenger cars move 225,000 miles daily.
- More than 1,100 passengers occupy Pullman cars.
- Passenger trains transport over 3,035,000 passengers one mile.
- Dining cars serve more than 4,000 meals.
- \$130,000 in taxes become due.

H. I. WAYNE, Gen. Agent  
Great Northern Station, Phone 4101  
Klamath Falls, Oregon



ROUTE OF THE **EMPIRE BUILDER**  
Between PORTLAND • TACOMA • SEATTLE • SPOKANE  
MINNEAPOLIS • ST. PAUL • CHICAGO

MONTGOMERY WARD

WARDS 100% PURE PENNSYLVANIA

# MOTOR OIL SALE

Sale ends Saturday!

## 19¢ QUART

plus Fed. Tax

No finer oil at any price for Cars, Trucks, Tractors!

You can pay 30c to 35c a qt. for motor oil... but you can't buy BETTER oil... but you can! buy WARD'S 100% PURE PENNSYLVANIA IMPARTIAL laboratory tests PROVE that fact! Wards Supreme Quality is refined from costliest crudes! It's triple-filtered, double-dewaxed! It stands-up under terrific motor heat! Put it in your crankcase now... at EXTRA savings. Bring containers.

EXTRA LOW DRUM LOT PRICES

Supreme Quality 100% Pennsylvania in 30 or 55 gal. drums. \*Plus Federal tax. Drum deposit extra.

## 85¢ gal.

HIGH PRESSURE OR CUP GREASE . . . .

## 74¢ 5-lb. Cans

Your choice of two top quality greases; both at Wards LOW price. Will not harden or clog fittings. Extra low prices on 25 or 100-lb. containers.

HIGH PRESSURE GREASE GUN 2.49  
Develops pressure up to 10,000 lbs. Leakproof packing. Snap-on adaptor for hydraulic fittings.

OIL FILTER REPLACEMENT CARTRIDGE 85¢  
Increases oil mileage :: prolongs motor life! Absorbs carbon, metal particles, harmful acids.

MONTGOMERY WARD

THE PERFECT PAINT FOR VACATION PAINTERS

# Resintone

One gallon covers the walls of an average size room

## 2.69 Gal.

.79 Qt. applicator .89

One coat covers almost any surface, even wallpaper!

With gas-rationing cutting down out-of-town trips, you'll be spending your vacation close to home. Why not spend some of this time making your home more beautiful? You can do it quickly and easily with Resintone :: the washable wall paint anyone can apply. You just roll it on! It's quick, in more ways than one—you can paint a room in the morning and live in it that same afternoon! That's because Resintone dries in 40 minutes, without odor. Resintone's economical too :: it thins with water! Try one of Resintone's 11 lovely colors on that room that needs re-doing!

Rinses from hands; yet (after one week) walls are washable.

Visit WARDS COMPLETE PAINT STORE!

MONEY-SAVING PRICES! FAMOUS PRODUCTS, TOO!

Here are a few of the many:

- Wax-Off. Removes wax, polish, etc. . . . . 10c
- Ready-Patch Spachtling Compound . . . . . 35c
- Wards Linseed Oil Putty, Pound . . . . . 12c
- Schalk's Crack Filler, 5-oz. can . . . . . 10c
- Savabrush Cleaner, 2 1/2-oz. . . . . 10c
- Wards Paint Cleaner, 1 lb. . . . . 10c

OUR BEST! SUPER HOUSE PAINT

Gal. in 5's 3.45

You can't buy better at any price! In actual laboratory tests with the top grades of 6 famous house paints, Super proved it hides better, goes farther, lasts longer! Single Gallons . . . . . 3.55

Wards Certified SUPER BARN PAINT

Produce a long-lasting, weather-proof finish. Fade-resistant. Covers 400 sq. ft., 2 coats.

Wards Certified SUPER PORCH & DECK PAINT

Ideal for outside surfaces. Long and long-wearing! Retains color after repeated washings!

Wards Certified SUPER HOUSE PAINT

Extra durable :: extra long-lasting. Goes on smoothly; is easy to apply! Dries hard overnight!

Sollax Household Cleaner

1 1/2 lbs. 25¢

Cleans walls, woodwork, bathroom! Loosens dirt, dissolves grease! Won't discolor surfaces!

Montgomery Ward

★ Visit our Catalog Department for items not in store stocks

★ Give your budget a lift—use our Monthly Payment Plan!

★ Visit our Catalog Department for items not carried in the store. Or shop by phone—from the catalog pages.

# Montgomery Ward