

Herald and News

FRANK JENKINS
Editor

MALCOLM EPLEY
Managing Editor

A temporary combination of the Evening Herald and the Klamath News. Published every afternoon except Sunday at Klamath Falls, Oregon, by the Herald Publishing Co. and the News Publishing Company.

SUBSCRIPTION RATES:
By carrier _____ month \$1.50 By mail _____ 6 months \$1.25
Yearly \$1.50 By mail _____ year \$4.00
Outside Klamath Falls, Modoc Sixty-two cents per year \$7.00

Entered as second class matter at the postoffice of Klamath Falls, Ore., on August 20, 1906, under act of congress, March 3, 1879.

Member Associated Press Member Audit Bureau Circulation

Today's Roundup

By MALCOLM EPLEY

IN THIS current discussion of Klamath's resources, one that is of transcendent importance, yet has hardly been publicly mentioned, is this:

KLAMATH HAS THE SECOND LARGEST BODY OF INDUSTRIAL-TRAINED LABOR IN THE STATE.

The availability of these experienced workers is certainly a vital factor in the outlook for sustaining and developing industry here. Just as power, raw materials, etc., attract industry, so industry tends to go where there is available manpower.

Large numbers of Klamath's able industrial workers have settled here on a permanent basis. They have their roots in the ground here, they have developed a liking for the country, they are great enthusiasts for hunting and fishing in this area. Many have established home ownership, as witness the wholesome residential development on small tracts in the suburbs. If there is opportunity for work here, they will remain in this community. The fact they are here now, and under the above-mentioned circumstances, helps make Klamath a good place for industrial activity.

It is true that this resource will seep away if we do not make full use of it. The smart community industrial program will not only take advantage of the presence of this large body of experienced labor, but by so doing will keep here a substantial body of valuable, desirable citizens.



EPLEY

Klamath River Power

WHILE we are on the subject of local resources, here is another interesting fact which was called to our attention this week, and which, we believe, will make you bat your eyes.

KLAMATH RIVER HAS POWER POTENTIALITIES WHICH FAR MORE THAN DOUBLE THE POTENTIAL POWER CAPACITY OF MASSIVE, NATIONALLY PUBLICIZED SHASTA DAM.

We quote from a department of interior publicity release, dated July 14, 1944:

"Shasta dam is the second most massive concrete structure built by man," said Commissioner Bashore. "Its power plant is now equipped with two 75,000 kilowatt generators, with space for three more units of the same size."

Five times 75,000 is 375,000 kilowatts.

Now, we quote from the Bonneville administration's economic survey of Klamath county:

"The Klamath basin has large undeveloped power resources. The federal power commission, on the basis of data supplied by the army engineers, estimates that four projects on the Klamath river in Oregon could provide additional generating capacity of 169,000 kilowatts. . . . Thirteen projects on the Klamath river in California could increase generating capacity by another 1,115,400 kilowatts."

Add 169,000 kilowatts and 1,115,400 kilowatts, and you have a total of 1,284,400 kilowatts. Compare that with the Shasta dam figures given above in an official reclamation bureau release, and you'll gain a new respect for Klamath river's power potentialities.

Five Plants Already

THE Bonneville report doesn't say so specifically, but we presume the capacity quoted in this report does not include that generated already at Copco's Klamath river plants—two at Klamath Falls, one at Keno, and two at Copco. That total is about 60,000.

There has been a good deal of talk about a power hook-up between Shasta and Bonneville through this area. Add to that the generating capacity of Klamath river in our own country, and a striking picture of power potentialities in this area unfolds.

The War Today

By DeWitt MacKENZIE
Associated Press War Analyst

WE shouldn't let allied success in Europe make us overlook the fact that things also go well for us in the Pacific—so well indeed that we likely shall be able soon to launch major operations which will be calculated to win the war in the Orient much sooner than originally expected.

We are closing in on Japan fast. This doesn't mean that we have an easy task before us. On the contrary it bids fair to be a nasty job.

Admiral King, commander of the U. S. fleet, declared a couple of days ago that the Japanese "will continue to wage war with all the power they possess." Admiral Halsey, commander of our third Pacific fleet, adds the pungent remark that "the Japanese still are like rats and fight until they are exterminated."

Rosy Complexion

HOWEVER, our recent conquests in the Mariana Islands, including the great naval and air base of Saipan, have put a new and rosy complexion on prospects. Uncle Sam's heavy bombers now are within reach of Japan and the Philippines—both only 1500 miles away. Admiral King reminds us that our navy now has bases to smash directly at Japan, the Philippines and China.

Well, that's hanging it on the line for the Mikado and his little men to see. And the new Japanese cabinet ministers, who are shouldering the heavy troubles ex-Premier Tojo packed up for them, read the signs and freely admit that things are serious for them.

Right To Be Worried

THEY'RE particularly concerned about the Mariana theatre, pointing out to the Japanese public that several powerful U. S. fleet task forces are prowling about in these waters which are vital to Nippon's security. They have a right to be worried, for we not only possess Saipan but are getting ahead well with our conquest of the important neighboring islands of Guam and Tinian.

Tokyo also has noted other hurricane warnings, reporting to the Japanese public that a U. S. task force has bombed Palau island and that a British force has strafed Sabang in the Dutch East Indies. Sabang has been bombed before, but an attack on Palau is a sensation.

Palau, and its 100 surrounding isles, is one of Japan's most important sea defenses. More over this group is a shield for the southern Philippines, being only 580 miles east of Mindanao.

With this tightening of the allied air and sea cordon about the enemy, a Japanese naval spokesman has made a disclosure of vast import. He says the Japanese fleet won't come out to give battle until conditions seem favorable to Tokyo. He gives as one reason that his navy lacks the air power of the American fleet.

That may easily be the exact truth, even if it is an enemy handout.

Repair of Facilities at Cherbourg Incomplete

WASHINGTON, July 27 (AP)—Secretary of War Stimson indicated today that the port of Cherbourg, captured by American troops June 26, still has not been repaired sufficiently to permit full use of its facilities to supply the allied armies in Normandy.

Telling a news conference some of his impressions of his recent trip to the combat area, Stimson praised the invasion supply services under Lt. Gen. John C. H. Lee, and made particular reference to the orderly and methodical handling of equipment in the field.

"Most of the time," he added, however, "they have been landing on the same beaches they originally took, while the port of Cherbourg is being made ready for permanent occupation."

His implication was that German destruction of port facilities and blocking of the Cherbourg harbor had been thorough.

Stimson described in detail also the difficult terrain of the Normandy battle area, with its small fields separated by tall hedges flanked by deep trenches, which he said gave the German defenders a ready-made system of trenches comparable to the trench system employed in the first World War.

Progress through such territory is necessarily slow, he said, and must be won in difficult infantry fighting, even though the infantry enjoys complete air support. Their task has been made more difficult, he said, by the fact that the Germans

have been able to inundate large combat zones on all fronts.

Merrill

Betty Ann Chatburn has as her house guest a sorority sister from the University of Oregon, Marjorie Earl. Miss Earl's home is in Cottage Grove.

Elizabeth and Mary Dennehy, daughters of Mrs. Helen Dennehy and Jack Dennehy, are spending several days in San Francisco with relatives and friends. Miss Mary Dennehy is a member of the staff of the local telephone exchange.

Mrs. T. W. Chatburn, Jr., and baby son are at Fort Benning, Ga., where they are with Corporal T. W. Chatburn, Jr., of the regular U. S. army infantry.

Mrs. W. J. Grove has returned from Seattle where she has spent several weeks with relatives.

Mr. and Mrs. Virgil Barron have returned from Iowa where they visited for some time with Barron's parents.

The auxiliary of the Merrill post, American Legion, will sponsor a rummage sale on October 14, it was decided at the last meeting attended by Mrs. Millicent West, Mrs. Ora Burke, Mrs. Bertha McCollum, Mrs. Ann Franks and Mrs. Lena Buck.

Mrs. Burke will serve as president during the coming year, Mrs. West as first vice president, Mrs. Buck as second

vice president, Mrs. Audrey Lewis as secretary-treasurer and Mrs. Ann Franks as historian. The executive committee which will function for the next year includes Mrs. Thelma Stukel, Mrs. Minnie Stukel and Mrs. Lela Hammond.

The officers were installed jointly with Klamath Falls on July 18.

Japanese Cemetery Desecrated Again

PORTLAND, July 27 (AP)—Desecration of the Japanese cemetery here for the second time within a year was blamed today by a juvenile court officer on adults rather than boys.

Ponderous gravestones were broken and tossed into heaps at the cemetery fence like a child's set of blocks—so scattered that Officer George J. Clauss said he doubted that graves and monuments could ever be reattached.

Wooden markers were splintered and set ablaze. A nearby resident—not a Japanese—came to the cemetery to extinguish one fire with a hose.

TAKES CHARGE

REEDSFORT, July 27 (AP)—Edward Sealport, Grays Harbor, took charge of the logging operations of the E. K. Hood Lumber company here today.

Employment in American aircraft industry is 390,000. Weekly payrolls are nearly \$15,000,000.

KIDNEYS MUST REMOVE EXCESS ACIDS

Help 15 Miles of Kidney Tubes. Flush Out Poisonous Waste.

If you have an excess of acids in your blood, your 15 miles of kidney tubes may be overworked. These tiny filters and tubes are working day and night to help Nature rid your system of excess acids and poisonous waste.

When disorder of kidney function permits poisonous matter to remain in your blood, it may cause backache, headache, rheumatism, lag pains, loss of pep and energy, getting up at night, swelling, puffiness under the eyes, headache and dizziness. Frequent or scanty passage with smarting and burning sometimes shows there is something wrong with your kidneys or bladder.

Kidneys may need help the same as bowels; that your doctor prescribes Doan's Pills, used regularly by millions for over 40 years. They give happy relief and will help the 15 miles of kidney tubes flush out poisonous waste from your blood. Get Doan's Pills.

SIDE GLANCES



© 1944 by NEA SERVICE, INC. T. M. REG. U. S. PAT. OFF. 7-27

"We're having more casualties since we're fighting in France, grandma! Here's a wounded soldier who says he can use a slice of angel food cake!"

Market Quotations

NEW YORK, July 27 (AP)—Stocks generally settled down to an off-day in today's market after a little selective purchasing at the start failed to follow through.	Common Stocks	40
Closing quotations:	American Can	62
Am Car & Fwy	103	
Am Tel & Tel	103	
Anacosta	26 1/2	
Am Pac	26 1/2	
Cal Packing	26 1/2	
Cal Tractor	26 1/2	
Commonwealth & Sou	26 1/2	
Curia-Wright	26 1/2	
General Motors	61 1/2	
GT Nor Ry pfd	39 1/2	
Illinois Central	17 1/2	
Int Harvester	70 1/2	
Kennecott	17 1/2	
Long-Bell "A"	10 1/2	
Mononghy Ward	47 1/2	
Nash-Kelvi	18 1/2	
N. Y. Central	20 1/2	
Northern Pacific	18 1/2	
Pac Gas & El	38 1/2	
Packard Motor	14 1/2	
Penna R R	29 1/2	
Republic Steel	19 1/2	
Richfield Oil	10 1/2	
Safeway Stores	52 1/2	
Rockwell	25 1/2	
Southern Pacific	25 1/2	
Standard Brands	31 1/2	
U. S. Steel	10 1/2	
Trans-America	10 1/2	
Union Oil Calif	10 1/2	
U. S. Steel	58	
Warner Pictures	13 1/2	

Potatoes

CHICAGO, July 27 (AP-WFA)—Potatoes arrived in 30 on track 33; total shipments 655; supplies very light; demand far exceeds available supply; Idaho 1.75-2.00; medium weighty, choice \$1.00-10.50. Calves 10. Steady; choice vealers \$14.00-14.50, medium \$12.00-12.50.

Hogs: salable 300. Steady; few packages good 180-220 lb. barrows and gilts \$14.75. Odd head good sows \$9.50. Good clearance.

Sheep: salable 1500. No early sales, looking steady; several decks good; choice full-wooled north coast lambs offered; few short strong lightweight medium to good in early morning run.

LIVESTOCK

SOUTH SAN FRANCISCO, July 27 (AP-WFA)—Cattle: salable 100. Generally steady. Bulk consisting she-stock, few odd head good grass cows quoted \$2.00-12.50. Medium cows moving at \$2.00-10.00, canners and cutters mostly \$1.75-5.75. Medium weighty, choice \$1.00-10.50. Calves 10. Steady; choice vealers \$14.00-14.50, medium \$12.00-12.50.

Hogs: salable 300. Steady; few packages good 180-220 lb. barrows and gilts \$14.75. Odd head good sows \$9.50. Good clearance.

Sheep: salable 1500. No early sales, looking steady; several decks good; choice full-wooled north coast lambs offered; few short strong lightweight medium to good in early morning run.

WEATHER

Wednesday, July 26	Max.	Min.	Precip.
Eugene	92	56	.00
Klamath Falls	84	83	Trace
Lakeview	83	83	.02
North Bend	64	85	.00
Portland	87	81	.00
Reedsport	89	70	.00
Reno	89	47	.00
San Francisco	72	54	Trace
Seattle	87	57	.00

WHEAT

CHICAGO, July 27 (AP)—The committee demand for wheat futures tapered off in late trading today and prices dropped fractions from the day's best figures under the pressure of scattered selling, some of which was regarded as hedging.

At the close wheat was 1/4 to 1/2 higher than yesterday's finish, September \$1.50 1/2. Oats were 1/4 to 1/2 higher, barley 1/2 to 3/4 higher, rye 1/2 to 3/4 higher, sorghum 1/2 to 3/4 higher, and clover 1/2 to 3/4 higher.

CAMP CARSON, Colo.

William B. Dennis, who is the son of Mr. and Mrs. James C. Cusick, Klamath Falls, Ore., is in training with battery B, 610th field artillery. Before entering the service, Cpl. Dennis was a parts and supply room clerk.

WITH U. S. ARMY TROOPS IN THE SOUTH PACIFIC

When Private Gene McKay arrived overseas at this South Pacific station he was the second of the three sons of Everett McKay, 5511 Altamont Drive, Klamath Falls, Ore., to get to this theater of operations.

Cpl. Gordon McKay also is somewhere in the South Pacific, and Gene is hopeful of seeing his brother eventually. Pvt. Dean McKay, the other brother, is on duty at the Tululake camp for interned Japanese.

Gene previously was stationed at Camp Cooke, Fort Winfield Scott, Camp Haan, all in California. He was a student at Henry high school just prior to his induction.

Courthouse Records

Marriages
GROVE-HODGES, Edward Francis Grove, 22, U. S. marine. Native of St. Joseph, Mo., resident of St. Joseph, Mo. Evelyn Ann Hodges, 18, Native of Sandusky, Ill., resident of Klamath Falls.

HAGUE-HIGHAM, Francis Elvin Hague, 23, truck driver. Native of Idaho, resident of Klamath Falls. Edna Alfreida Mary Higham, 19, waitress. Native of Klamath Falls, resident of Klamath Falls.

BISBEE-LEHMAN, Otis Lamar Bisbee, 21, U. S. navy. Native of Missouri, resident of Klamath Falls. Anne Lillian Lehman, 19, student nurse. Native of Missouri, resident of Drennon Station, Mo.

COMING!

COMPLETE PERMANENT WAVE HOME KIT \$5.95

Natural-looking curls and waves now yours—easily, coolly, comfortably, at home! You'll love the amazing Charm-Kurl PERMANENT WAVE KIT.

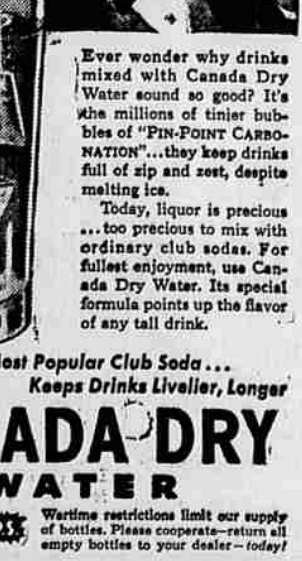
Contains everything you need—permanent wave solution, curler, shampoo and wave set. Easy as putting your hair up in curlers. Treat on the genuine Charm-Kurl—America's largest selling permanent wave kit. Get one today at Wagoner Drug and all drug stores.



Sounds Like a Million!

Ever wonder why drinks mixed with Canada Dry Water sound so good? It's the millions of finer bubbles of "PIN-POINT CARBONATION" . . . they keep drinks full of zip and zest, despite melting ice.

Today, liquor is precious . . . too precious to mix with ordinary club sodas. For fullest enjoyment, use Canada Dry Water. Its special formula points up the flavor of any tall drink.



The World's Most Popular Club Soda . . . Keeps Drinks Livelier, Longer

CANADA DRY WATER

BIG BOTTLE 15¢ Plus deposit

War-time restrictions limit our supply of bottles. Please cooperate—return all empty bottles to your dealer—today!

MEN AND WOMEN IN SERVICE

15TH AAF IN ITALY—Staff Sergeant James L. Richey Jr., 23, a veteran Liberator bomber upper turret gunner of Portland, Ore., has been awarded the first Oak Leaf cluster to the Air Medal, it was announced at this base.

In the words of the citation, he received the decoration "for meritorious achievement in aerial flight while participating in sustained operational activities against the enemy."

A graduate of the Klamath Union high school of Klamath Falls, Ore., Sergeant Richey enlisted in the air forces, March 15, 1942. He has been overseas four months in a group commanded by Colonel Thomas W. Steed of Etowah, Tenn.

Due to arrive in the United States this month on furlough from the European theater of operations, where he served 11 months with the army air forces, is First Lt. R. L. Pomeroy, husband of Mrs. Verna Pomeroy, 635 North Second, Klamath Falls.

Gail Smith, formerly of Malin, left for the armed services on July 22. He will enter the marine corps. His wife and infant daughter reside in Vale, Ore., with his parents. Gail was a graduate of Malin high school in 1940, leaving for Vale shortly after.

He is a brother of Mrs. Frank Tofel of Bonanza, and of Bill Smith of Malin.

CAMP CARSON, Colo.—Cpl. William B. Dennis, who is the son of Mr. and Mrs. James C. Cusick, Klamath Falls, Ore., is in training with battery B, 610th field artillery. Before entering the service, Cpl. Dennis was a parts and supply room clerk.

When Private Gene McKay arrived overseas at this South Pacific station he was the second of the three sons of Everett McKay, 5511 Altamont Drive, Klamath Falls, Ore., to get to this theater of operations.

Cpl. Gordon McKay also is somewhere in the South Pacific, and Gene is hopeful of seeing his brother eventually. Pvt. Dean McKay, the other brother, is on duty at the Tululake camp for interned Japanese.

Gene previously was stationed at Camp Cooke, Fort Winfield Scott, Camp Haan, all in California. He was a student at Henry high school just prior to his induction.

Courthouse Records

Marriages
GROVE-HODGES, Edward Francis Grove, 22, U. S. marine. Native of St. Joseph, Mo., resident of St. Joseph, Mo. Evelyn Ann Hodges, 18, Native of Sandusky, Ill., resident of Klamath Falls.

HAGUE-HIGHAM, Francis Elvin Hague, 23, truck driver. Native of Idaho, resident of Klamath Falls. Edna Alfreida Mary Higham, 19, waitress. Native of Klamath Falls, resident of Klamath Falls.

BISBEE-LEHMAN, Otis Lamar Bisbee, 21, U. S. navy. Native of Missouri, resident of Klamath Falls. Anne Lillian Lehman, 19, student nurse. Native of Missouri, resident of Drennon Station, Mo.

COMING!

COMPLETE PERMANENT WAVE HOME KIT \$5.95

Natural-looking curls and waves now yours—easily, coolly, comfortably, at home! You'll love the amazing Charm-Kurl PERMANENT WAVE KIT.

Contains everything you need—permanent wave solution, curler, shampoo and wave set. Easy as putting your hair up in curlers. Treat on the genuine Charm-Kurl—America's largest selling permanent wave kit. Get one today at Wagoner Drug and all drug stores.



Sounds Like a Million!

Ever wonder why drinks mixed with Canada Dry Water sound so good? It's the millions of finer bubbles of "PIN-POINT CARBONATION" . . . they keep drinks full of zip and zest, despite melting ice.

Today, liquor is precious . . . too precious to mix with ordinary club sodas. For fullest enjoyment, use Canada Dry Water. Its special formula points up the flavor of any tall drink.



The World's Most Popular Club Soda . . . Keeps Drinks Livelier, Longer

CANADA DRY WATER

BIG BOTTLE 15¢ Plus deposit

War-time restrictions limit our supply of bottles. Please cooperate—return all empty bottles to your dealer—today!

NATURALIST

HORIZONTAL	6 Toward	33 Anger	45 Era
15 Pictured poet	7 Despair	34 Compass point	47 Proselyte de
13 Angry	8 Morsel	35 Debit note	Judalism
14 Rowler	9 Rupee (abbr.)	36 Mustelinae	48 New Guinea
15 Fruit of the palm	10 Type measure	37 Slant	50 Myself
16 Italian river	11 Rough lava	38 Slant	51 And (Latin)
17 Size of shot	12 Distinct parts	39 Transmitta	52 Right (abbr.)
18 Hebrew letter	13 Hebrew letter	40 He was also a student of	53 Steamship (abbr.)
19 Electrical term	14 Either	41 Affirm	54 Board (abbr.)
20 Type of cloth	15 Slumbers	42 Pint (abbr.)	54 Board (abbr.)
21 Clever	16 Golf term	43 Decigram	
22 Color	17 Silk worm		
23 Father	18 Color		
24 Leaf of the calyx	19 Father		
25 Nostrils	20 Near		
26 Ratio	21 He was also a student of		
27 Dry	22 Golf term		
28 Fall in drops	23 Silk worm		
29 Untie	24 Father		
30 Animals	25 Near		
31 Leaves	26 He was also a student of		
32 Grafted (her.)	27 Golf term		
33 Fruit	28 Silk worm		
34 Symbol for tellurium	29 Father		
35 Average (abbr.)	30 Near		
36 Palm lily	31 He was also a student of		
37 Valley	32 Golf term		
38 Emanates	33 Silk worm		
39 Whiskers	34 Father		
40 He was a man of	35 Near		
41 Apparel	36 He was also a student of		
	37 Golf term		
	38 Silk worm		
	39 Father		
	40 Near		
	41 He was also a student of		
	42 Golf term		
	43 Silk worm		
	44 Father		
	45 Near		
	46 He was also a student of		
	47 Golf term		
	48 Silk worm		
	49 Father		
	50 Near		
	51 He was also a student of		
	52 Golf term		
	53 Silk worm		
	54 Father		



ANSWER TO PREVIOUS PUZZLE

1. NINA
2. FUCH
3. NINA
4. FUCH
5. NINA
6. FUCH
7. NINA
8. FUCH
9. NINA
10. FUCH
11. NINA
12. FUCH
13. NINA
14. FUCH
15. NINA
16. FUCH
17. NINA
18. FUCH
19. NINA
20. FUCH
21. NINA
22. FUCH
23. NINA
24. FUCH
25. NINA
26. FUCH
27. NINA
28. FUCH
29. NINA
30. FUCH
31. NINA
32. FUCH
33. NINA
34. FUCH
35. NINA
36. FUCH
37. NINA
38. FUCH
39. NINA
40. FUCH
41. NINA
42. FUCH
43. NINA
44. FUCH
45. NINA
46. FUCH
47. NINA
48. FUCH
49. NINA
50. FUCH
51. NINA
52. FUCH
53. NINA
54. FUCH



flames in both rooms died out before extensive damage occurred.

Vandals Sought In Portland For Fire Attempt In Church

PORTLAND, July 27 (AP)—Police today sought vandals who attempted to burn down the Peninsula avenue Evangelical church.

Two fires were set in the church, Ivan Saunders, chairman of the board of trustees, told police last night after he discovered the arson attempts. In one room, Sunday school papers were piled on a bench and set on fire. A Bible was hacked with a kitchen knife.

Oil was poured over the floor and on curtains in another room and the curtains set afire. The

VITAL STATISTICS

BIRTHS—Born at Klamath Valley hospital, Klamath Falls, Ore., on July 27, 1944: Mr. and Mrs. Harold A. King, 1944 Logan, a girl. Weight: 7 pounds 4