

PERSHING BELIEVES STRUGGLE NEAR END

WASHINGTON, July 8 (AP)—General John J. Pershing, 83-year-old commander of the World War I AEF, told General Charles Gault in a dramatic interview today that he believes the present struggle is nearing its end.

The aged and ailing Pershing received the leader of the French national committee in his room at the army's Walter Reed hospital.

Pershing rose despite his illness to greet De Gaulle. They exchanged views on the war and when Pershing was asked whether he believed "we are nearing the end of the world conflict," he replied, "I do."

Pershing said that if he had one on to Berlin in the last war perhaps we wouldn't be in the fight now. General De Gaulle replied vigorously, "at least this time we'll go through."

ENGINEER DIES

PORTLAND, July 8 (AP)—Ingenieur Martin, one of the earliest engineers on the Great Northern railroad and personal friend of the road's founder, died here yesterday at the age of 84.

If it's a "frozen" article you need, advertise for a used one in the classified.

MEN AND WOMEN IN SERVICE

MERRILL — Ensign Randall Pope of the U. S. navy, with his bride, the former Virginia Lee, Chicago, visited briefly at the home of Ensign Pope's parents, Mr. and Mrs. J. Leland Pope, the early part of this week. The navy man received his commission at Plattsburg, N. Y., and will report this week for further orders at a west coast station.

Prior to leaving for the service he was attending Oregon State college and received his basic training at Purdue university, Lafayette, Ind.

The young Mrs. Pope is the daughter of Dr. and Mrs. Lee, Chicago, and the wedding was an event of June 28.

Sergeant Curtis L. Snell, 21, 765 South National, Springfield, Mo., lower ball turret gunner in an Italy based AAF B-17 Flying Fortress, has been promoted to the grade of staff sergeant. The flying sergeant was graduated from Great Falls, Mont., high school in 1939. He has been overseas for four months.

After being graduated from airplane mechanics school at Keesler Field, Miss., on March 15, 1943, Sergeant Snell received his gunnery training at

Harlingen, Tex. He received his wings upon graduation on June 1, 1943.

A member of the 15th air force, he has participated in 20 missions over enemy targets in northern Italy, Germany and the Balkans. His unit was recently commended by Major General Nathan F. Twining, commanding general of the 15th air force, for its excellent record in bombing Hitler's vaunted Fortress Europe.

His wife, Mrs. Imogene Snell, resides at Red Top, Mo., and his mother lives at Klamath Falls, Ore. He entered the AAF on January 18, 1943.

Mrs. Mayo Stillwell of 1638 Division street received a package recently from her son, PFC William Ray Stillwell, with the marine corps in the South Pacific.

In the package was a number of souvenirs that Stillwell had picked up during his experience in the islands. Included were two multi-colored grass skirts, a collection of colored seed shells, beads, bracelets, a Jap bayonet with the point broken, a Chinese belt buckle and pictures of a captured Japanese flag.

PFC Stillwell attended KUHS and would like his friends to write to him. Anyone interested can get his address from his mother by calling 7044.

New Guinea natives wear ceremonial masks 14 to 19 feet high.

Classified Ads Bring Results.



Country Store



VOX THEATRE -- Main St. between 6th and 7th

FINAL NIGHT

Giving Away 3 \$25 War Bonds!

PRICES SLASHED

To Clean Up Merchandise!

EVERYTHING MUST GO!

Saturday Night Is Farmers' Night

And We're Fully Re-stocked on Men's Specialties

- ★ Shotgun Shells
 - ★ Batteries
 - ★ Prestone
 - ★ Beer
 - ★ Barrel Gasoline Pump
 - ★ 6-Ft. Locker Rent Free for 1 Year at K. F. Creamery
 - ★ Automatic Fence Electrifier
 - ★ Large Pressure Tractor Grease Gun
 - ★ Foot-operated Sandstone
 - ★ Sunshade for John Deere Plow
 - ★ And Many Other Items of Outstanding Value
- Priced in "E" Bonds -- \$25 Bonds and Up**

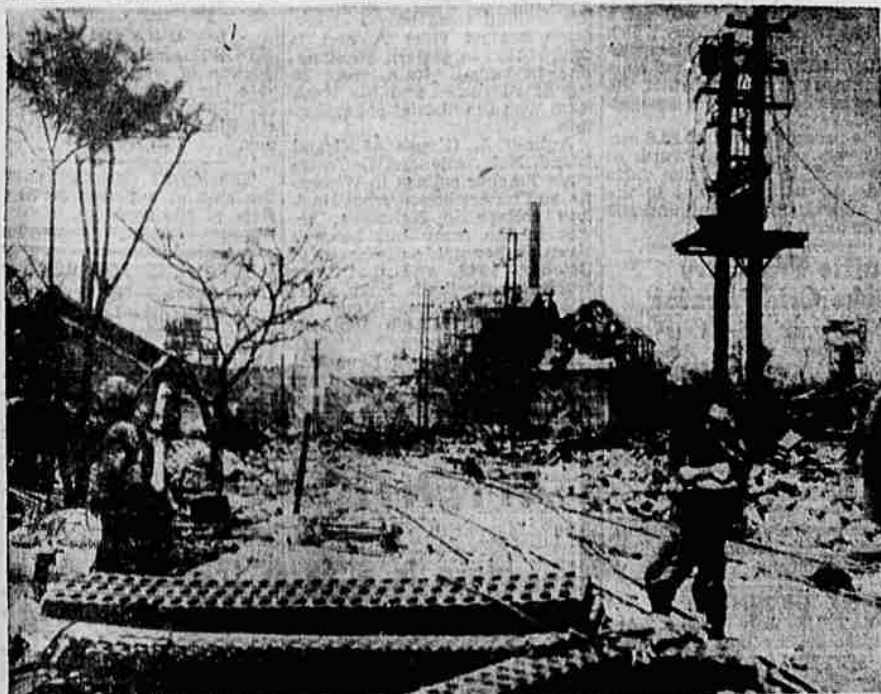
The Following Retailers Donated Merchandise and Have Been Participating Otherwise in the Country Store:

- | | | | |
|--|--|--|---|
| <p>CAFES
Bob's Cafe
Bohemian Cafe
Burr-O-N Drive In
Chas. Hathaway, also Horseshoe Cafe
Jennie's
Marie's Sandwich Shop
Max Cafe
Pelican Cafe
Phil's Candyland
Ritter's Cafe
Sari's
The Spud
Squeeze In
T-Bone Cafe</p> <p>Klamath Billiards
The Rialto
Waldorf</p> <p>Willard Hotel</p> <p>SERVICE STATIONS & GARAGES
Gus Anderson (Shell Serv. Sta.)
W. E. Anderson, Main and Riverside
Beacon Serv. Station
Black and White Serv. Station
Bob's Shell Service (S. 6th)
Bob's Texaco Service (Cor. Upham St.)
Ed Boothby (Gilmore Serv.)
E. C. Bridger Serv. Station
Broderick Union Service
Chet's Serv. Station (E. Main)
Clancy's Texaco Station
Bill Davis (Assoc. Serv.)
Ellis' Gilmore Serv.
Fred's Mobil Serv. (Klamath Ave.)
John Garten (Oreg. & Biohn)
Matt's Richfield Station
Paul's Mobil Service
Raymond's Gilmore Service
Marvin Roark Serv. Station
Robinson's Union Oil Station
Skeen's Signal Service
Stodick's Assoc. Service
Sunrise Service Station
Monarch Service Station
Wilshire Station No. 5
Cliff Yaden's Signal Station</p> <p>Richfield Oil Corporation, 2300 S. 6th
Signal Oil Co. (F. A. Clark)
Standard Stations, Inc.</p> <p>Balsiger Motor Company
H. E. Jones Mach. Shop & Garage
Specialized Service</p> | <p>Colyear Motor Sales
J. W. Kerns Impl.
Moty and Van Dyke</p> <p>RETAIL GROCERS
Boito's Grocery
Carter's Fine Foods
Central Meat Market
Community Grocery
Cox Grocery
Dryden's Grocery
East Side Grocery
Eleventh St. Grocery
Emil's Food Stores
Frei's Grocery
Gallagher's Grocery
Joe's Grocery
Jurgensen's Grocery
Lein's Grocery
Lincoln St. Grocery
Mac's Grocery
Market Center
M. & M. Market
Modern Grocery
Olympia Grocery
Oregon Food Stores
Pastaga Grocery
Piggly Wiggly
Quality Fish Market
Quality Grocery
Safeway Stores
Sam's Grocery
Second St. Grocery
Sunset Grocery
Twin Girls Grocery
Trulove's Market
Unique Market
West Klamath Grocery
Whitey's Grocery</p> <p>CREAMERIES
Klamath Falls Creamery
Lost River Dairy
Raymond Dairy</p> <p>Coca-Cola Bottling Company
California Oregon Power Co.</p> <p>PRINTERS
Herald and News
Klamath Shopping Guide
Pioneer Printing
Smith Bates Printing Co.
Shaw Stationery</p> <p>OPTOMETRISTS
Columbian Optical Co.
Rigg's Optical Co.
Standard Optical Co.</p> <p>BARBER SHOPS
Gleason Supply Co.
Ideal Barber Shop</p> | <p>Mar's Barber Shop
Medical-Dental Barber Shop
Murphy's Barber Shop
Orrell & Thrasher, Barbers
Palace Barber Shop
Rumers Barber Shop
Sixth Street Barber Shop
Swansen's Barber Shop</p> <p>BEAUTY SHOPS
Audrey's Beauty Shop
East Side Beauty Shop
Elk Beauty Shop
Finley Beauty Shop
Hastings Beauty Salon
Hazel's Beauty Shop
Houston's Beauty Shop
Irma's Beauty Shop
Katherine's Beauty Shop
Modernistic Beauty Shop
Orlean's Beauty Shop
Palace Beauty Shop
Pearce Beauty Shop
Star Beauty Shop
Studio of Beauty
Swansen's Beauty Shop
Vanity Beauty Shop</p> <p>DRUG STORES
Castleberry's Super Cut-Rate Drugs
Currin's For Drugs
Everybody's Drugs
Leo Hendricks Drugs
Star Drug Store
Waggoner Drugs
Walgreen's Drugs
Whitman Drug Store
Wood's Drug Store</p> <p>INSURANCE and REAL ESTATE
Howard Barnhisal
Chilcote & Smith
D. N. Clemens
Bogue Dale
Daggett Insurance Agency
J. H. Driscoll
J. E. Hosking
Insurance Trust Account
M. L. Johnson
The Laundry Company
Lindley & Son
Momyer Insurance Agency
K. A. Moore, Motor Investment Company
Hans Norland Insurance
Rodman Insurance Agency
C. S. Robertson
Lawrence Slater
Geo. J. Walton
T. B. Watters</p> | <p>RETAIL LUMBER COMPANIES
Builder's Lumber Company
Big Basin Lumber Co.
Copeland Lbr. Co.
Drake Lumber Co.
Klamath Valley Lbr. Co.
F. R. Hauger
Home Lumber Company
Swan Lake Moulding
Suburban Lumber Co.</p> <p>FUEL
Fred H. Heilbronner
Payton & Company
Western Oil & Burner Co.</p> <p>WOMEN'S READY - TO - WEAR & DEPT. STORES
Foulger's Store
LaPointe's
Long's
Margot's
Moe's Store
Penney's
Sears Roebuck & Co.
Whytal's</p> <p>MEN'S STORES
Dick Reader
Draw's Manstore
The Emporium
Hardy's
Herman's
Oregon Woolen Store
Rudy's Men's Shop</p> <p>SHOE STORES
Buster Brown Shoe Store
Model Shoe Store
Matt Finnigan
Connolly's Saddle & Harness Shop</p> <p>KENO
Keno Cafe
Keno Store
Klamath River Store
Shell Oil Station</p> <p>CHILOQUIN
Chas. Brickel
Chiloquin Bakery
Chiloquin Drug Store
Chiloquin Garage
Tony Castell
Copeland Yards
Curley's Corner
Bill Lorenz
Geinger Grocery
Modoc Garage
Norval's Golden Rule
Smith's Union Oil</p> |
|--|--|--|---|

Briefing Before Battle for Saipan Ridge



(NEA Telephoto) Under shell-pocked roof of former Jap buildings on Saipan, this infantry officer briefs his platoon non-coms before attack on Nafutan Ridge. Their faces, gaunt and grim from strain of endless fighting, the men listen attentively. Signal Corps photo.



(NEA Telephoto) YANKS PROBE SAIPAN RUINS — American infantrymen cautiously advance through ruins of Jap sugar refinery, blasted by aerial bombs during opening phase of Saipan invasion.

SAIPAN—A Costly Conquest



The U. S. Marines whose bodies lie sprawled in the sand, above, died in the costliest operation in the Pacific so far—the invasion of Saipan. In the first two weeks of action on this highly important Pacific Isle, 9752 Americans were killed, wounded or missing—more than double the toll at bloody Tarawa. Enemy losses were even heavier than ours.