

BOMBER FORCE HITS TARGET IN NORMANDY

By W. W. HERCHER
 SUPREME HEADQUARTERS,
 ALLIED EXPEDITIONARY
 FORCE, June 8 (AP)—A power-
 ful force of 750 to 1000 Ameri-
 can heavy bombers swept a
 wide arc of south Normandy
 today, smashing bridges, air-
 fields and railroad yards and
 junctions in a vigorous ef-
 fort to clamp an air seal on the
 beachhead battlefield.

While Fortresses and Liberators, in the biggest aerial operation of the third day of the invasion, hit hard at installations from 100 to 150 miles behind the front, Marauders began the attack with a dawn attack on Caen.

The twin-engine mediums of the city on the main railway between Cherbourg and Paris, burning with at least 20 fires from an attack at 4:50 p. m.

Targets Riddled
 These blows followed RAF strikes last night in which a series of rail targets near Paris and German transport 12 miles behind the invasion coast, were riddled with heavy cargoes of bombs. The transport target was a concentration in the forest of Cerisy where the road runs from Bayeux to St. Lo.

Allied planes of all descriptions had flown 22,000 sorties in the last 48 hours and air operations were mounting today as weather improved.

Thunderbolt and Lightning fighter-bombers since 8 p. m. yesterday flew so continuously that they stopped only to refuel and rearm between flights, getting out on new missions without waiting to repair bullet holes in their wings.

Bridges Hit
 Among the fighter-bomber targets hit were 15 bridges and a chateau used as a German headquarters.

More than 2000 of the 9000 sorties flown by the allies in the 24 hours ending at midnight were made by these fighter-bombers which shot down six enemy aircraft and lost 21 of their own number.

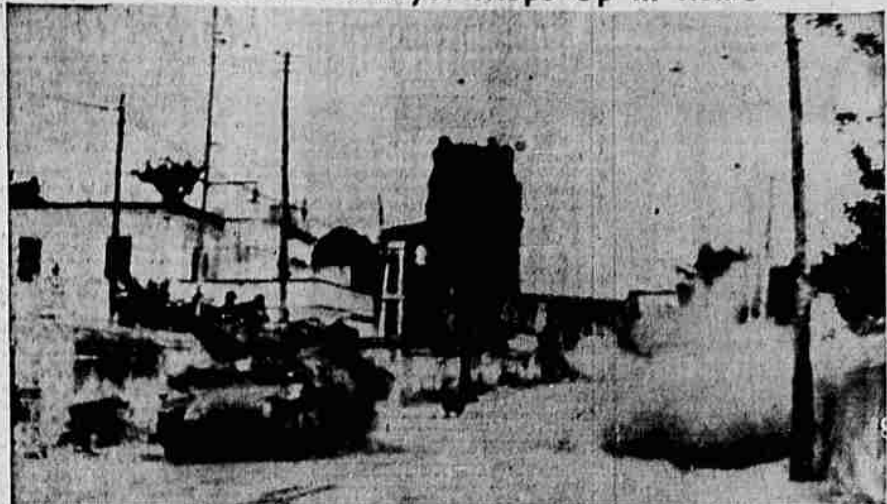
The latest compilation of aerial losses since the beginning of the invasion showed 177 allied planes missing and at least 74 enemy planes destroyed.

Losses reported today, covering mostly yesterday's operations, totaled 104, including 25 British heavy bombers falling to return from night missions, two American heavy bombers, and 48 American fighters and fighter-bombers.

Score Kill
 Nazi night fighters stalked the British formations and scored their biggest kill of the invasion, knocking down 29 of the RAF big bombers.

Targets attacked today by the heavies, which carried out two missions yesterday, were located roughly in the regions of Chateaudun, Lemans, Rennes, Nantes and Tours, all large French towns and strategic communication points. They were accompanied by about

Yank Tank Destroyer Mops Up in Rome



An American tank-destroyer blasts out German machine-gun nest, which had been slowing down Allied advance into Rome. Signal Corps radio-telephoto from Italy.

500 Mustangs, Lightnings and Thunderbolts.

Besides the dawn attack on Caen, the Marauders went to Lessay, Pontaubault, Valognes and St. Lo on the Cherbourg peninsula for other assaults, while Havocs pounded Periers and Lahaye du Puits.

The air ministry said the well-hidden Cerisy wood target was of great tactical importance and had to be attacked at low level because of 7000-foot clouds.

Other RAF formations attacked the German city of Cologne at the crossing of the Rhine and laid mines.

Logger Deferment Appeal Rejected

WASHINGTON, June 8 (AP)—An appeal for draft deferments for more workers in the logging and lumber industries has been rejected by Maj. Gen. Lewis B. Hershey, selective service director.

The interagency committee which selects the types of workers to be deferred recently placed "high climbers" in the deferred list and Senator Cordon (R-Ore.) and Rep. Norman (R-Wash.) appealed to Hershey to extend deferment to other workers in the two industries.

Hershey replied that because of the urgent need of the armed forces for young men the committee had greatly restricted the number of activities that could be placed on the deferred list.

Overcharges On Meat Discovered

PORTLAND, June 8 (AP)—A secret survey showed heavy meat overcharges ranging as high as 85 cents a pound for cube steaks ceiling priced at 28 cents, a special OPA investigator said today.

The survey, carried on in central and eastern Oregon and in Portland will lead to suspension proceedings for meat markets found to be willfully violating regulations, the OPA said.

DIAPER RASH is soothed, cooled, relieved, often prevented by Moxie, the soothing, medicated powder with ingredients often used by specialists.

Statistics show that most men of 35 marry women of 25 marry women of 22, but of 28.

Investigation of Alaskan Highway Talked in House

WASHINGTON, June 8 (AP)—Belief that a congress should "some day" investigate the Alaska military road project was expressed Rep. Engel (R-Mich.) in hearings on the military appropriation bill for the fiscal year starting next July 1.

The testimony was made public today with introduction of the bill in the house.

Erig. Gen. L. D. Worsham, of army engineers, testified the project had cost \$140,000,000 to date for 1428 miles of gravel road. He said the cost was about \$100,000 a mile.

Worsham said the men working on the highway under commercial contractors were guaranteed 240 hours work a month and if they did not work that much they got paid for the total. The lowest wage paid was \$1.10 an hour, he said, and the wage included housing but the men paid \$2 a day for subsistence.

The officer said the highest rate paid the laborers was \$1.75 an hour. He agreed with Engel that a man guaranteed 240 hours' work would draw \$420 a month.

Worsham said the original road was constructed by army engineers and that the public roads administration constructed the present road with civilian contractors but under the supervision of the army engineers.

Much of the testimony was not included in that made public.

EXAMINER APPOINTED
 SALEM, June 8 (AP)—Mrs. Carle Gilbert, Pendleton, was reappointed by Governor Earl Snell today to a two-year term on the state board of cosmetic therapy examiners.

How's Your Coal Supply?

According to the latest word from the mines, the coal situation is better now than we can expect it to be by fall, NOW is the time to fill your storage bin to capacity, then you can forget the coal problem—you'll know you have yours. Dont delay, do it today.

FRED H. HEILBRONNER

Office and Yard, 821 Spring St. Phone 4139
 "Fuels That Satisfy" Plus Service
 Branch Yard—Merrill, Oregon

For Dad
 He Will Appreciate
 a
Quality Shirt
 Like a
VAN HEUSEN WHITE
 From
RUDY'S Men's Shop
 608 Main St.

Worry of
FALSE TEETH
 Slipping or Irritating?
 Don't be embarrassed by loose false teeth slipping, dropping or wobbling when you eat, talk or laugh. Just sprinkle a little **FASTTEETH** on your plates. This pleasant powder gives a remarkable sense of added comfort and security by holding plates more firmly. No gummy, gooey, pasty taste or feeling. It's alkaline (non-acid). Get **FASTTEETH** at any drug store.

SERVISTAN
RUG CUSHIONS
A WARTIME NECESSITY
For Under Every Rug and Carpet... In Every Room!

Waffle Back

Protect Your Rugs, Make Them Last Longer WITH 'SERVISTAN' RUG CUSHIONS

"Super Servistan," our heaviest and best. Waffle design, all-hair back is resilient and mat-proof. Thicker, sturdier to make your rugs more luxurious. 9 and 12-foot widths.

75¢ Square Yard

9x12 FT. SIZE \$8.50

5 Good Reasons Why Rug Cushions Should Be Used:

1. Double life of rugs (old or new) by Sears actual laboratory tests.
2. Give more thickness to rugs and deaden foot traffic sounds.
3. Insulate floors... Make heating easier and more efficient.
4. Easier to vacuum rugs. Moth-proof and vermin-resistant.
5. Add depth and give a soft, luxurious feeling to your rugs.

SEARS FINEST QUALITY ENAMEL SURFACE!

'DURALIN' Floorcovering



Every Yard Perfect!

Extra weight! Extra quality! That means years of extra service! Designed in glowing, sparkling colors to harmonize or highlight any color scheme. 6-ft. rolls, cut to any desired length.

9-ft. widths 54¢ Sq. Yd.

Any Purchase TOTALING \$10 OR MORE CAN BE MADE ON SEARS Easy Payment Plan



EXAMPLES OF LOW COST ROOM SIZES:

6x6-ft.	1.96
6x9-ft.	2.94
6x10.6-ft.	3.43
6x12-ft.	3.92
*9x9-ft.	4.41
*9x10.6-ft.	5.15
*9x12-ft.	5.88
*9x15-ft.	7.35
*12x10-ft.	6.54
*12x12-ft.	7.34
*12x15-ft.	9.80
*12x18-ft.	11.76

*Sizes over 8-ft. wide are seamed.

Laros Dimensional
 [REG. U. S. PAT. OFF.]

SHOWER FOR THE BRIDE

Here's an invitation to Susan's shower. She's to be married in a month. We're giving her Laros Dimensional slips for her trousseau.

No smarter gift could be given to the bride-to-be. A Dimensional slip has been designed especially for her. These excellent slips are accurately sized to fit the nine basic feminine figures.

Dimensional gives you a custom-fitted garment, exquisitely made, at a very low cost. \$3

TOWN SHOP
 Main-at-Fifth

133 South Eighth Street **Sears** ROEBUCK AND CO.