

# FRIDAY STOCK TRADE YIELDS TO DOWNDRIFT

By VICTOR EUBANK  
NEW YORK, June 11 (AP)—Stocks generally turned their backs on good war news in today's market and, with scattered exceptions among peace issues, the drift was downward from the start.

Selling never was urgent and volume was under that of Thursday, approximating 800,000 shares. Weakness also was a rarity and declines mostly were in minor fractions near the close.

Stocks under water the greater part of the time included U. S. Steel, Bethlehem, Chrysler, Oliver Farm, Douglas Aircraft, United Aircraft, Western Union, Santa Fe, Great Northern, American Smelting, Du Pont, J. C. Penney, U. S. Gypsum and Standard Oil (N.J.) on the upside at intervals were Goodrich, U. S. Rubber, Woolworth, Eastman Kodak, Allied Chemical, Electric Power & Light and Hercules Motors.

Bonds were irregular, closing quotations:

American Can	85 1/2
Am Car & Fdy	43 1/2
Am Tel & Tel	156 1/2
Anaconda	28
Cat Tractor	48 1/2
Comm'nw'th & Sou	15 1/2
General Electric	38 1/2
General Motors	54 1/2
Gt Nor Ry pfd	30 1/2
Illinois Central	141
Int Harvester	70 1/2
Kennecott	31 1/2
Lockheed	21 1/2
Long-Bell "A"	9 1/2
Montgomery Ward	46 1/2
Nash-Kelv	13 1/2
N Y Central	17 1/2
Northern Pacific	15 1/2
Pac Gas & El	29 1/2
Packard Motor	4 1/2
J. C. Penney	90 1/2
Penna R R	29 1/2
Republic Steel	17 1/2
Richfield Oil	11 1/2
Safeway Stores	42 1/2
Sears Roebuck	77 1/2
Southern Pacific	26 1/2
Standard Brands	7 1/2
Sunshine Mining	6 1/2
Trans-America	9 1/2
Union Oil Calif	20 1/2
Union Pacific	97 1/2
U S Steel	55 1/2
Warner Pictures	15 1/2

## Potatoes

CHICAGO, June 11 (AP-USA)—Potatoes, arrivals 43; on track 51; total US shipments 965; supplies very light; demand exceeds available supplies; market unsettled; California Long Whites US No. 1, \$4.15; Louisiana Bliss Triumphs victory grade \$4.00-10; Mississippi Bliss Triumphs victory grade \$3.95.

## BULLISH MOVEMENT SWEEPS GRAIN PITS

CHICAGO, June 11 (AP)—Bullish enthusiasm over-ran the grain pits today, second wheat up more than a cent at times, and pushing oats and rye to new seasonal peaks. Turnover was heavy and profit-taking stemmed the advance, but the market remained firm through to the close.

The July oats contract featured trading by establishing new high for the past 23 years. September rye hit \$1.09 a bushel. Buying in all pits was based upon the June 1 government crop report, which showed a substantial decline in grain production this year.

At the close wheat was 1-1 cent higher, July \$1.45 1/4, September \$1.45 1/4, and corn was unchanged, July \$1.05, oats were up 1-1/2c and rye gained 14-1/2c.

## LIVESTOCK

SOUTH SAN FRANCISCO, June 11 (AP-USA)—Cattle: 10. Nominal. For week generally 50 spot more lower. Medium to good grass steers, \$14.00-15.00. Several loads 800-880 lb. grass heifers, \$12.00-12.50. Good weighty cows, \$11.50. Medium ewes, \$9.50-10.50; medium sausage bulls, \$10.00-11.00, good \$12. Calves: None. Steady. Good to choice 150-250 lb. vealers quoted \$14.00-14.50.

Hogs: None; nominal load lots good to choice 200-240 lb. barrows and gilts quoted to \$14.45. For week; around steady. Good sows \$13.25 down.

Sheep: 1100. About steady. Week's good to choice spring lambs, \$14.50-15.00. Good to choice shorn lambs \$13.00-13.50. Common and medium lambs weak.

## CHICAGO LIVESTOCK

CHICAGO, June 11 (AP-USA)—Salable hogs 7,000; total 10,500; opened fully steady with Thursday's averages; later trade active to off; 5-10c higher closed at full advance; top \$14.20; good and choice 180-360 lb. \$13.90-14.15; generally \$14.00 up; strictly good and choice 150-180 lb. \$13.00-14.00; bulk good 360-550 lb. sows \$13.80-85.

Salable cattle 1000; salable calves 500; weekend market generally steady; slow on steers and heifers; but few fresh arrivals in supply; cows steady to weak, unusually active; strong to unevenly higher trade on bulls; vealers unchanged \$15.50-16.50; best fed steers \$16.15; bulk \$14.25-15.50; odd head and small packages to shippers \$13.00-15.25; most heifers fully 25c under early in week; instances 50c down; \$14.25 paid freely for heavy sausage bulls with odd head to \$14.40; reliable cleanup stocker and feeder cattle for week at fully steady prices; liberal supply going east at \$14.00-15.50; mostly \$14.00-15.00 on medium to good 700-900 lb. averages.

Salable sheep 2000; total 3500; late Thursday, lambs steady to strong; today's trade-fat lambs opening only fairly active; steady to slightly easier; good to choice clipper lambs with No. 1 and 2 skins \$14.75-15.25; load medium to good around 87 lb. clipped Colorados \$13.50; odd lots spring lambs \$15.00-16.25; with throwout kinds down to \$14.00; sheep steady; choice 125 lb. shorn native ewes \$8.25; few throwout ewes \$7.00.

# INDEPENDENT GROCERS

These are the established independent Klamath basin merchants who help support the county. These are the merchants who own their property, pay their taxes, and back the community 100%. They buy bonds to back up their own boys and their neighbors' boys in the service. They are doing their best to continue to serve you and keep the cost of living down. They invite YOUR support.

PATRONIZE---

PATRONIZE---

Coca-Cola Bottling Co.

Crater Lake Beverage Co.

Beck's Bakery

Fluhrer's Bakery

Independent Grocers Also Invite Comparison

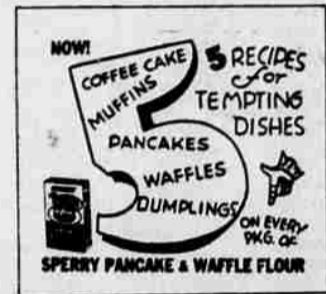
Klamath Falls Creamery

Wonder Bread

Buy Bonds

Nabisco Shreddies

"THE SPOONFUL OF FITNESS — THAT'S FUN TO EAT"



## Renfro to Play In All-Star Game

PULLMAN, June 11 (AP)—Coach Babe Hollingbery announced yesterday that Dick Renfro, Washington State college backfield star, has accepted an invitation to play in the annual college all-star-professional championship football game in Chicago August 25.

Renfro's acceptance brings to three the number of WSC men who may see action against the Washington Redskins of the National Professional league. Privates Bob Kennedy and Nick Susoeff, both stationed at Fort George Wright, Wash., previously had accepted bids.

## What You Buy With WAR BONDS

As Spring nears America's hundreds of thousands of anglers turn their thoughts to the fishing streams and lakes. But you must make that old tackle do the job this year for manufacturers are turning out war orders instead of new fishing tackle. You can save for that new rod or reel during the duration by your purchase of War Bonds today.



Buy more and more War Bonds every payday and build a nest-egg for future needs when domestic consumer goods are more plentiful and lower in price. Your increased purchase of War Bonds is essential to pay the war costs. "You've Done Your Bit, Now Do Your Best." U. S. Treasury Department

Livens up Leftovers

**MORTON'S SALT**  
When it rains it pours 2 kinds... Plain or Iodized

## Saturday Specials

## Saturday Specials

<b>Sugar</b> 5 lbs. 32c 10 lbs. 61c	<b>Lettuce</b> Lb. 15c	<b>Milk</b> All Brands 3 lbs. 28c	<b>Oranges</b> Sunkist 200's Dor. 49c	<b>Matches</b> 6 boxes 25c	<b>Grapefr't</b> Medium 4 for 25c	<b>Coffee</b> Popular Brands Lb. 33c	<b>New Potatoes</b> 10 lbs. 59c
	<b>Carrots</b> 3 bu. 25c	<b>Tomatoes</b> 2 lbs. 45c		<b>Butter</b> Lb. 49c			

Compare "These" Prices With Those of the "So-Called" Big Outlets

YOU'LL FIND THESE EVERYDAY PRICES AT YOUR INDEPENDENT GROCERS

<b>Kellogg Rice Krispies</b> , 14c	<b>Tomato Juice</b> 46-Oz. 24c	<b>Ivory Soap Large</b> 12c
<b>Kellogg Variety Pack</b> , 26c	<b>Whole Grain Corn</b> 303 Standby 16c	<b>Palmolive Soap</b> 8c
<b>Kellogg Pep</b> 11c	<b>Peas</b> 303 Standby 15c	<b>Sunbrite Cleanser</b> 6c
<b>Post Toasties</b> 11-Oz. 10c	<b>Cut Beans</b> No. 2 16c	<b>Purex</b> 1/4 Gallon 27c
<b>Kellogg Gro-Pup</b> 25c	<b>Tomatoes</b> No. 2 1/2 Sugar Loaf 2 for 39c	<b>Wheaties</b> Kix or Cheerloats 2 pkgs. 27c
<b>Freestone Peaches</b> No. 2 1/2 Overage 27c	<b>Rinso</b> Large 26c	

YOU'LL FIND THESE VALUES AT THE FOLLOWING STORES

- Bagett's Grocery**  
Shasta Way
- Community Grocery**  
1040 East Main
- Dryden's Grocery**  
1842 Portland
- East Side Grocery**  
921 East Main
- Fifth Ave. Grocery**  
Altamont Drive and LaVerne
- Joe's Grocery & Market**  
24 Main
- Keno Store**  
Keno, Ore.

- Lien's Cash Store**  
Stewart Addition, Keno Road
- Mac's Store**  
Merrill Road
- Modern Grocery**  
802 East Main
- Myrtle's Food Store**  
Shasta Way
- Robinson's Market**  
4839 South Sixth
- Shasta Food Market**  
Shasta Way
- Twin Girls Grocery**  
620 East Main
- West Side Grocery**  
Weyerhaeuser