

THIS CURIOUS WORLD

T. M. REG. U. S. PAT. OFF.

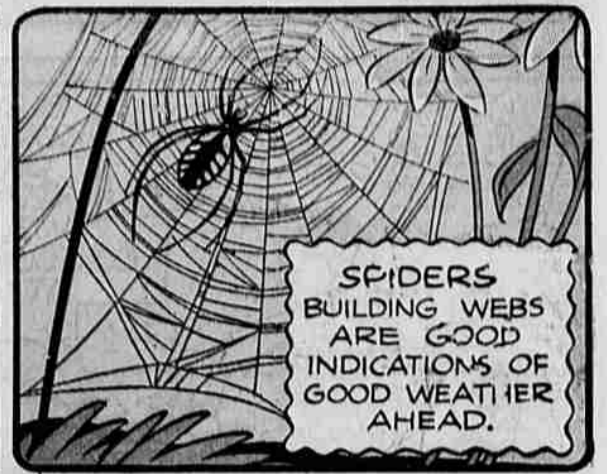
WEATHER FORECASTS



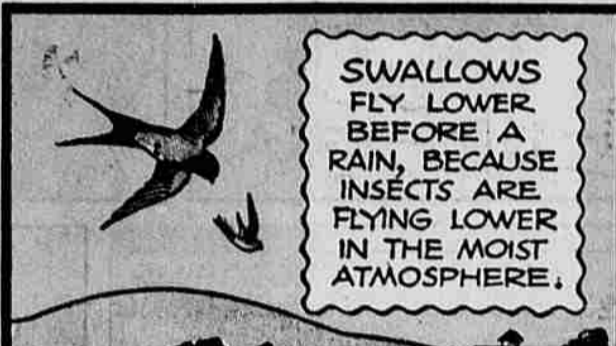
ARE CENSORED THESE DAYS, BUT MOTHER NATURE STILL GIVES THEM OUT TO ALL WHO WILL READ HER SIGNS! *



CLOUDS SCUDDING ALONG AT DIFFERENT LEVELS IN NEARLY OPPOSITE DIRECTIONS ARE APT TO FORETELL HEAVY RAINS.



SPIDERS BUILDING WEBS ARE GOOD INDICATIONS OF GOOD WEATHER AHEAD.



SWALLOWS FLY LOWER BEFORE A RAIN, BECAUSE INSECTS ARE FLYING LOWER IN THE MOIST ATMOSPHERE.



A HALO AROUND THE SUN OR MOON IS A RELIABLE SIGN OF COMING MOISTURE.



FLIES, BECAUSE OF HEAVY WINGS BEFORE A COMING RAIN, HANG ON AND BITE WITH INCREASED VIM AND VIGOR.



DEW OR FROST IN THE MORNING IS A GOOD SIGN THE DAY WILL BE CLEAR.



ACHING CORNS AND JOINTS INDICATE LOWERING OF AIR PRESSURE ON THE BODY, AND AN IMPENDING STORM.

COPI. 1943 BY NEA SERVICE, INC. 5-23

FRECKLES and his FRIENDS



SHALL WE REVIEW OUR FIRST-AID TREATMENT OF 'SHOCK AND FAINTING'?

I THINK WE ALL KNOW THE TREATMENT, HILDA!



SO DO I!

IF WE HAD A REAL SHOCK VICTIM, WE'D SOON FIND OUT IF WE COULD PUT THE TREATMENT TO PRACTICAL USE!



I'LL NEED POP'S OVERCOAT.... A BROOMSTICK.... A COAT-HANGER.... AND ONE OF THOSE GRUESOME BOOKENDS UNCLE LOWELL SENT US!



HELLO!

GOOD HEAVENS!



WELL... THEY WANTED A REAL VICTIM AND I GOT THEM ONE! I BETTER GO AND TELL THEM!



I HOPE YOU KNOW HOW TO BRING HER TO! SHE SURE IS OUT COLD!



MAYBE I BETTER CALL THE EMERGENCY HOSPITAL JUST TO MAKE SURE!



HURRY OUT TO THE GRUBBLE HOUSE, BILL.... 27 PINE STREET!

OKAY!



HMM! THIS IS WHAT I'D CALL A REAL CASE OF SHOCK!



WHEN YOU FINISH WITH HER, THERE ARE FOUR MORE INSIDE!

?

5-23

COPI. 1943 BY NEA SERVICE, INC.

