

RECOVERIES GENERAL ON STOCK MARKET

NEW YORK, May 15 (AP)—Many who sold stocks Friday on the short-war theory reversed themselves to some extent in today's market and recoveries were general throughout the list.

British official warnings that any idea of a quick finish to the world conflict was erroneous, and recognition that the roads to Rome, Berlin and Tokyo still were beset with numerous difficulties, did much to stem the peace liquidation which hit leaders in the previous session.

While there were a few advances of 1 to 5 points in evidence near the close, come-backs mostly were in minor reactions. Losses also were fairly well distributed. Dealings were around 600,000 shares.

Nickel plate preferred was a stellar performer, getting up about 5 to a new 1943 top on moderate activity. The road's common stock also touched best levels for the year. Bolstering the senior issue was talk of some plan being considered to eliminate dividend arrearages amounting to approximately \$89 a share.

Shares getting into the "new high" class included Flintkote, Dresser Mfg. and Panhandle Producing & Refining. Supported were Santa Fe, Southern Pacific, Seaboard Air Line, Western Union, American & Foreign Power, Douglas Aircraft, American Can, U. S. Steel, Chrysler, Montgomery Ward, Anaconda and American Can.

Occasional minus marks were posted for Eastman Kodak, Texas Co., Bethlehem, General Motors, Westinghouse, J. I. Case and Baltimore & Ohio.

Bonds and commodities moved over a narrow course.

Closing quotations:

American Can	83 1/2
Am Car & Fdy	39 1/2
Am Tel & Tel	15 1/2
Anaconda	26 1/2
Cat Tractor	46
Commonwealth & Sou	1 1/2
General Electric	37 1/2
General Motors	51 1/2
Gt Nor Ry Pfd	31 1/2
Illinois Central	14 1/2
Int Harvester	67
Kennecott	32 1/2
Lockheed	21 1/2
Long-Bell "A"	10
Montgomery Ward	41 1/2
Nash-Kelvy	11
N Y Central	18 1/2
Northern Pacific	17
Packard Motor	41
Penn R R	30 1/2
Republic Steel	17 1/2
Richfield Oil	9 1/2
Safeway Stores	39 1/2
Sears Roebuck	70 1/2
Southern Pacific	27 1/2
Standard Brands	7
Sunshine Mining	6 1/2
Trans-America	8 1/2
Union Oil Calif	19 1/2
Union Pacific	9 1/2
U S Steel	54 1/2
Warner Pictures	14 1/2

Lakeview

LAKEVIEW — The Jack O'Leary house in the Chewaucan valley about 40 miles north of Lakeview burned to the ground Friday when a strong wind whipped a small blaze in the roof beyond control. Mrs. O'Leary was alone at the time and was unable to get up and extinguish the fire that started near the flu. Although her husband and others, who were working some distance away, hurried to the scene they were able to save but few personal effects. Many treasured articles of the family which were brought from Ireland were destroyed in the fire. The O'Leary's have moved to the John Branch place for the present.

D. E. DeArmon, J. C. Clark and Ernest Fetsch have been appointed on the school budget committee. The budget meeting has been set for next Tuesday evening, at which time the budget for the coming school year will be made.

The pulmotor which Lakeview and vicinity have been awaiting for several weeks has arrived. Anyone interested in the study of artificial respiration will agree that any life-saving organization must be highly trained in order to efficiently maintain manual artificial respiration over long periods of time and keep the timing and rhythm of respiration perfect and continuous. With Lakeview's pulmotor, the rhythm is mechanically controlled, and furthermore, it does not tire or give up. Also, because of its portability it is not necessary to disconnect it from the patient if it is found advisable to move him. Manual artificial respiration is most difficult to conduct if the patient is being moved.

One of our generals sang during a recent air raid on Antwerp. We have reliable reports, however, that the bombing was worse than the singing.

Potatoes

CHICAGO, May 15 (AP-USA)—Potatoes, arrivals 65; on track 40; total US shipments 605; new stock; supplies very light, demand good, market firm at ceilings; old stock; no sales reported; Alabama 100 lb. sacks Bliss Triumphs US No. 1, \$4.02-20; Louisiana 100 lb. sacks Bliss Triumphs generally good quality \$4.28-30; California Long Whites US No. 1, \$4.44-56.

LIVESTOCK

SOUTH SAN FRANCISCO, May 15 (AP)—(Fed-State Market News) — Cattle: for five days 450; compared week ago; steers generally steady, medium grass heifers weak; medium to canner cows around 50c lower; bulls steady, calves and vealers 50c lower; week's extreme top, choice 1270 lb. Idaho steers \$16.75; medium grass steers \$15.00-35; cutters \$15.00-50; load medium 930-940 lb. heifers \$12.75-13.00; load medium 1035 lb. range cows \$11.00; common cows \$9.50-10.00; colored cutters \$8.50-9.00, canners \$7.00-50; medium grass bulls \$11.50-12.50, few heavy \$13.00.

Calves: for five days 140, around 50c lower, few good to choice vealers \$14.50-15.50, medium to common \$12.00-14.00.

Hogs: for five days 1700; compared week ago; barrows and gilts mostly 25c lower, sows 40c lower, closing top good to choice barrows and gilts \$15.10, good sows \$13.85.

Sheep: for five days 1200; compared week ago; spring lambs 25-50c lower, packages good 80-86 lb. \$14.25-15.25, choice quoted \$15.30; medium to common feeders \$12.00-50; shorn ewes 25-50c lower, No. 1 pelt choice \$7.00 down; medium No. 2 pelt \$4.50-5.50, culls 90 lb. \$3.00-50.

PORTLAND, Ore., May 15 (AP-USA) — CATTLE: For week salable 1025; calves 200; compared week ago, steers and heifers steady, cows and bulls steady to 25 higher, dairy type cows up most; vealers steady; bulk medium to good fed steers \$15.00-\$15.00, top \$18.50; common down to \$12.00; good fed heifers \$15.00-50; common to medium \$10.50-\$14.00; canner and cutter cows closed \$7.50-\$9.50; fat dairy type to \$11.50 and over; good beef cows \$12.50-\$13.00; medium to good beef cows \$11.75-\$13.25; practical top strictly good cows \$14.00; bulls 25c lower or 50-75c under week's high time; extreme outside heavy sausage bulls on late rounds \$13.75, practical top \$13.50; all grades vealers strong to 50c higher, choice offerings reaching \$16.50; stock cattle scarce, steady, with thin kinds suitable for grazing in broadest demand at \$13.25-15.00.

SHEEP: For week salable 1535; spring lambs fully steady; good to choice \$15.00-50; common down to \$12.00; grassy shorn lambs under pressure, common grade 50 or more lower; good to choice fed shorn lambs early \$15.00, bulk of supply common grades at \$9.50-\$10.50; good shorn ewes \$6.40-75; woolled ewes to \$8.00.

HOGS: For week salable 2050; compared week ago, market 50 higher; week's bulk good and choice 180-225 lbs. \$15.25, few down to \$15.00; 240-300 lbs. \$14.25-75; light lights \$14.00-50; good sows \$13.25-\$13.50; feeder pigs \$16.50-\$17.00; choice lights scarce, heavies down to \$14.50.

CHICAGO, May 15 (AP)—Salable hogs 300, total 9800; no thorough test of market because of small supply; undertone steady; quotable top \$14.35; compared week ago barrows, gilts, sows 35-40c lower.

SALABLE CATTLE 100, calves 100; compared Friday last week: good and choice grade steers and yearlings steady to weak; medium grades 25c lower; bulk steers \$14.00-16.75; best yearlings \$17.00; heifer yearlings \$16.75; heifers steady to 25c lower; medium grades showing

School Journalists At Newspaper Office



Wes Guderian, Herald and News news editor, is here shown giving news desk tips to a group of KUHS journalists. The girls are, left to right, Nadine Palmerton, Mary Ellen Wright, Edna Kahl, Dari Helfrich, Mariys Steinseifer, Nancy Bennet and Dorothy Hicks.

LT. HARDING RETURNS FROM NORTH AFRICA

Lt. John Harding, who has been flying in North Africa for the last six months, arrived in the United States this week and is en route to Portland where he will meet his wife, the former Margaret Horton of this city. He will also visit his mother, Mrs. C. B. Harding, of Portland.

Lt. Harding flew from Africa to Florida and while en route to the west coast was grounded by bad weather in Texas. It is not known whether the young airman will be able to visit in Klamath Falls where he attended school, or if he is to return to active duty immediately.

Mrs. Harding left Thursday night by train for Portland. She is employed here in the office of the US employment service.

decline, bulk \$13.75-16.00; cows steady to 25c higher; cutter cows closed at \$10.50 down, most medium to good beef cows \$11.75-13.25; practical top strictly good cows \$14.00; bulls 25c lower or 50-75c under week's high time; extreme outside heavy sausage bulls on late rounds \$13.75, practical top \$13.50; all grades vealers strong to 50c higher, choice offerings reaching \$16.50; stock cattle scarce, steady, with thin kinds suitable for grazing in broadest demand at \$13.25-15.00.

SHEEP: For week salable 1535; spring lambs fully steady; good to choice \$15.00-50; common down to \$12.00; grassy shorn lambs under pressure, common grade 50 or more lower; good to choice fed shorn lambs early \$15.00, bulk of supply common grades at \$9.50-\$10.50; good shorn ewes \$6.40-75; woolled ewes to \$8.00.

Students Ask for Recreation to Halt Delinquency

LAKEVIEW—A group of high school students put the question of recreational facilities in Lakeview squarely before the Rotary club yesterday in their appeals for cooperation and backing in a program they felt would alleviate much of the juvenile delinquency problem.

Bette Combs summed up the various talks given by the students, adding that through the cooperation of the home, newspaper and civic groups, Lakeview can have a place of recreation and social contacts for the youth of today and the youth of tomorrow with an expense that would be greatly outweighed by the results in a higher physical and moral standard.

Labor Shortage Seen for Lake County Farmers

LAKEVIEW — That Lake county will be faced with a farm labor shortage this summer is apparent, according to figures cited by County Agent Victor Johnson in his talk to the Lions club today.

As a result of this shortage, the Lions club will act as a registration center to clear requests from farmers for labor, and offers from townspeople to help meet the problem.

"Food and fibre are as important as ammunition in the winning of the war," Johnson said. He stated that armed forces will take 25 per cent of all the food and fibre produced in the U. S. this year compared with 15 per cent last year.

Civilian Defense News Notes

The Block Leader Council met at luncheon Friday at the chamber of commerce rooms, and various area leaders reported to Mrs. Jean Puckett progress that had been made.

Martha McCollum: Precincts 6, 7, 9, 20 and 29, reported favorable results being obtained by her block leaders.

Coral Sabo: North Enterprise, North Altamont and South Homedale completed, with a total of 267 "V sticker" homes, three registered nurses and several practical nurses. Three precincts not yet completed.

Mrs. Harriet Gross: Precincts 30, 31, 32, Chelsea and Pelican City. Precincts 30 and 31 are complete, and the others will be complete early next week. West Klamath and Stewart-Lenox area progressing favorably.

Mrs. Dean Osborne: Precincts 24 to 28, inclusive, reports her area nearly completed.

Miss Eleanor Weatherford: Precincts 3, 4, 5, 8 & 14, reports excellent progress.

Attention Block Leaders: Block Leaders are under the Civilian Service corps and are not subject to call in air raids or other emergency disasters. Their work is principally collecting data and disseminating information regarding production and conservation of all community resources vital to the war effort.

Student Increase Makes First Class School District

LAKEVIEW—With the school census showing 1005 residents between the ages of 4-19 in the district, Lakeview on July 1 will become a first class school district. The change will cause an increase of from three to five directors, three of whom will be voted upon for three, four and five-year terms at an election to be held June 21.

Lakeview Lions End Rescue Ship Bond Sale Drive

LAKEVIEW — The program, sponsored by the Lions club, of building an aircraft rescue ship at a cost of \$60,000 in war savings bonds, was completed April 30 with sales totalling \$119,212.50. The program started March 15 and ran through the Victory program which stimulated sales the last half of April.

PIANO PUPILS HOLD AUDITION HERE MAY 7

The Klamath Falls unit of the 1943 national piano playing auditions, sponsored by the National Guild of Piano Teachers, was held May 7 and 8. Many piano pupils from Sacred Heart academy took part in this nationwide event. The adjudator was Mrs. Mary Anderson, an eminent teacher and pianist. Mrs. Gardner acted as monitor.

To achieve the national honor roll, each student was required to receive an 80 per cent grade from the judge upon the playing of a memorized program consisting of two to 10 selections chosen from standard literature for the piano.

The students winning highest honors were Elaine Abbotts, Marilyn Olson, Alice Baker, Peggy Pruitt, Mary Vandenberg, Phyllis Crawford, June Earhart, Patty Knoll, Patricia O'Leary, Joseph Gardner and Pat Nidorf. Honors were also given to Mickey O'Dell, James Johnston, Thelma Bell, Sandra Mazingo, Charlotte Ivory, John Ross, Charlotte Heup, Marian Newman, Joan Fogarty, Lavetta McTaggart, Carol Saunders, Harriet Lavensk, Rosemary Williams, Robert Paul, June Harrison, Ellen O'Keefe, Billie June McTaggart, Alma Walker, Patricia McClellan, Marcheta Sloan, Dennis Short, Norman Ottoman, Molly Cashin, Patricia McMillan, Jean Olson, Margaret Provost, Gwendolyn Beckley, Sally Knopp, Anna Hyde and Mary Gardner.

The names of all winners will be published in the 1944 Guild yearbook and given countrywide distribution, while each individual winner will be presented with an honor certificate showing the student's classification, rating received, and honors won. The movement, now in its 14th year, is an educational one which aims to raise piano playing in this country to the level of that formerly existing in European music centers.

War Training Service men had their quota of excitement Thursday afternoon when a radio in the recreation room at Summers school, where the boys are stationed, shorted and started a blaze in the room.

Although the fire was not a serious one, thick smoke made it difficult to extinguish. No one was injured during the excitement.

The boys were taking exams at the time of the fire.

Exam Disrupted by Fire at WTS Room

ALBUQUERQUE, N. M., (AP)—Fire Chief Art Westerfeld doesn't need a spade to dig fish worms. He uses a screwdriver. The screwdriver is electrically charged. The chief says he just pokes it into the ground, turns on the current and soon the worms come up for air.

One problem the chief hasn't solved: He still has to stick the worms on the hook by hand.

BOSTON WOOL

BOSTON, May 15 (AP-USA)—The Boston wool market continued very quiet during the past week. Consigned territory wools are arriving in fair volume from Idaho, Colorado, Arizona, Utah and New Mexico.

With liquor rationing adopted in several states, there are reports that many of the customers are becoming more rational.

Spanish royal decree established public schools in New Mexico in 1721.

Lumber Industrial News

ALGOMA'S PLANNER MOVES TO SHAW'S

A planer from the dismantled Algoma Lumber company plant at Algoma was moved this week to the Shaw Lumber company operation at Tionesta, and was being installed Saturday.

Shaw company's planing equipment was lost in a fire last Sunday. President J. R. Shaw said the Algoma planer is being set up as a temporary measure, and that an effort is being made to get additional machinery for the re-established Shaw planing mill.

Most of the Algoma planing equipment had been sold before the Shaw fire occurred.

Algoma Lumber Used by Farmers For Spud Cellars

A lot of the lumber from docks and other structures at the dismantled Algoma Lumber company plant has gone into potato cellars in the south-end area of the Klamath basin, it was learned Saturday.

Basin farmers proved to be active buyers of the lumber salvaged from the abandonment of the Algoma operation.

Core of the earth is estimated to be 1800 miles below the surface.

VOYE IN CAPITAL ON LOGGER FEEDING

A. J. Voyer, president of the Big Lakes Box company of Klamath Falls and a member of the OPA advisory committee on lumber, went to Washington D. C., this week to work on the problem of providing more adequate food for logging camps.

OPA restrictions have brought a problem to camp cooks throughout the northwest, it is understood, but there has been some relaxation and an effort is being made to work out the whole problem.

Office Equipment Lost by Wheeler In Friday's Fire

Typewriters and other office machinery proved the most serious loss in the fire that hit the Wheeler Pine company's office structure in the wee hours of Friday morning.

Several pieces of the valuable equipment were destroyed. Nothing serious was lost in the way of records, because most of the company's records are in the San Francisco office. The fire proved more of a nuisance than anything else.

Cause of the blaze remains a mystery. Company officials said it may have been a short in a wire.

LIQUOR MEN GIVE STIFF PENALTIES

PORTLAND, May 15 (AP)—The state liquor control commission, with two new members hearing cases, is passing out stiffer penalties to beer license violators.

Twenty suffered suspension yesterday, 10 of them for 30-day periods in place of the customary 7- and 14-day suspensions.

Among them were: George L. Stevens, Kern buffet, 135 S. 6th street, Klamath Falls, 30 days; service of alcoholic beverage to intoxicated person.

Ames Luis, The Tavern, 610 Klamath avenue, Klamath Falls, 30 days; sale to intoxicated person.

Walter Henry, The Kanteen, 132 S. 7th street, Klamath Falls, 30 days; sale to intoxicated person.

One post-war problem will be the handling of American Legion conventions. What will happen to a town invaded by veteran Commandos?

One of the war's domestic problems is a shortage of laundresses. It seems the washerwomen are in the war plants cleaning up.

Former Crater Lake Park Head Gets Navy Commission

David Canfield, former superintendent of Crater Lake National park, has been commissioned a lieutenant in the United States navy, according to word received here.

For several years, Canfield has been superintendent at Rocky Mountain National park in Colorado. He is training in Rhode Island.

Canfield became superintendent at Crater lake after serving as chief ranger there. After several years he was transferred to Rocky Mountain.

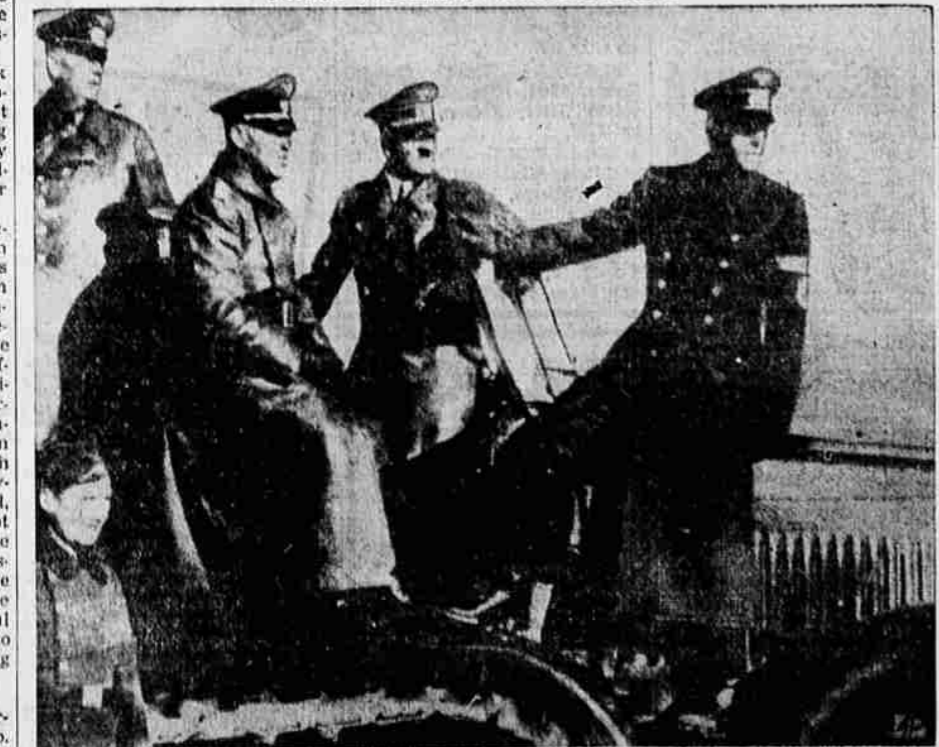
To be "Johnny on the spot" used to be a virtue. Gangsters have made it suicide.

DANCE

Eagles New Hall
9th and Walnut
Adm. 95c. Service Men 50c
Ladies Free

Every Saturday
Dancing 8:00 'Til 1:00

Hitler Watches Demonstration



The caption on this picture received from neutral Portugal says it shows Adolf Hitler (second from right) during a demonstration of new weapons. Others in photograph were not identified.

MOVED

to

Our New Home

419 Main St.

The Court House Is Now
One Block Down the Street
From Our Office

The Laundry Co.

New Address 419 Main Same Phone 5612

Call Long Distance only when it is urgent

YOUR CONTINUED HELP IN MAKING ONLY VITAL CALLS TO WAR-BUSY CENTERS IS MORE AND MORE ESSENTIAL EVERY DAY

THE PACIFIC TELEPHONE AND TELEGRAPH COMPANY
120 North 8th Street Telephone 3101