

For Your Information

MAIL CLOSING TIME
(Effective June 16, 1942)
Train 19 Southbound: 6:15 p. m.
Train 20 Northbound: 10 a. m.
Train 17 Southbound: 6:30 a. m.
Train 16 Northbound: 9 p. m., Evening Airmail.
Medford Stage, Westbound, 3:30

Installation—Prosperity Rebekeh lodge will meet at 7:30 p. m. Thursday in IOOF hall. There will be installation of officers and refreshments will be served. All visiting Rebekeh are invited to attend.

VFW—Regular meeting of Pelican Post 1383, VFW, will be held Thursday, January 21, at 8 p. m. in the KC hall. A lunch will be served after the meeting to Post members and members of the auxiliary. Chas. Roufs and Zell promise something special for this occasion and members are urged to turn out.

Postponed—The regular monthly meeting of the Mary Martha circle of the Presbyterian church will be held Friday, January 29, at the home of Mrs. F. W. Peak, 2053 Lawrence.

Jobs Daughters—The meeting scheduled for this evening, Thursday, has been postponed until further notice.

No Practice—Andrew Loney Jr., director of music at the First Methodist church, announces that the choir rehearsal, scheduled for this evening (Thursday) has been canceled.

Postponed—The meeting of the Friendship club scheduled for tomorrow (Friday) has been postponed until next week.

Hazbins to Meet—The Hazbins of the Eagles auxiliary will meet at the home of Ursel Bratton, 2141 White avenue, Friday at 7:30 p. m.

Card Party—The Women of the Moose will hold the third card party of their series at the Moose hall Friday, January 22, at 2 p. m. The public is invited.

CLEARANCE TO MAIL BOXES EMPHASIZED

Patrons on rural routes are urged to cooperate with the post-office department in regard to the delivery of mail in suburban districts. Postal laws require patrons to keep clear the approaches to their mail boxes by removing any obstructions, including snow, which make it difficult for carriers to deliver mail to boxes without alighting from their vehicles.

If approaches are not cleared within a reasonable time, delivery by carrier may be withheld temporarily until approaches are cleared.

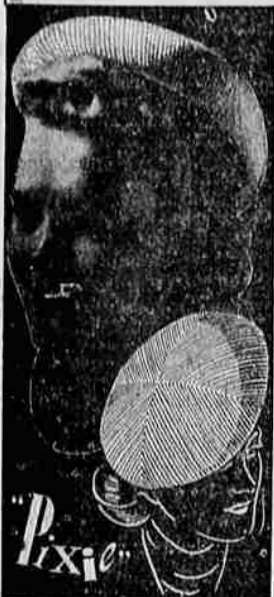
If carriers are delayed, it is impossible for them to complete deliveries on the routes. Postmaster Burt E. Hawkins stated.

Sailor Moved—M. O. Bright, seaman second class, was moved from the northbound train Wednesday night to the county isolation hospital for treatment.

This is the most dangerous season for motoring. Insure without delay. Hans Nerland, 118 North 7th.

Whytal's

DISTINCTIVE APPAREL
Phone 1272 901 Main



... as advertised in the January issue of Mademoiselle!

- 94% Wool
- 6% Coseth Felt
- Selection of Colors
- Adjustable Head-Size

Whytal's — Millinery Salon



CHIEF FLYING EAGLE, Ensign Thomas Oxendine, 20, full-blooded Cherokee Indian, will charge along an aerial warpath when he leaves the Naval Air Station at Jacksonville, Fla., to take his place with the fleet. His great-grandfather fought in the War between the States and two uncles were in the last war.



OUR MEN IN SERVICE

Navy enlistments announced at Portland this week included the names of two Klamath Falls men, Richard W. Wells and Dale F. Millett.

NEW PINE CREEK—Sgt. Delmer Smith arrived January 14 from Amarilla, Tex., where he is stationed at the Amarilla Technical air force school. Sgt. Smith has been gone 18 months. While here he is staying with Darwin Robnett. He had a 15-day leave, and it took him four days to come home. Amarilla is right in the pan-handle oil country, he said, and added that he likes army life fine. He enlisted for three years.

Word has been received from LaVaughn Shanks, who recently enlisted in the navy, that he is stationed at Farragut, Ida.

Lt. (jg) Donald L. Golding, formerly a teacher in the Klamath Union high school, has been ordnance instructor since January 2 at the US naval reserve midshipmen's school in New York, having completed his course in seamanship, navigation and ordnance.

EDITORIALS ON NEWS

(Continued From Page One)
Importance of keeping the ship-building program going at top speed.

Getting the ships built is far more important than who collects the dues from the shipyard workers.

PRENTISS BROWN, defeated for senator in Michigan and promptly made head of the OPA, tackles his new job in earnest. Here's a word of advice to him:

LEAD 'em; don't try to drive 'em. The American people can be led almost anywhere by the right kind of leaders—leaders who have the good sense to EXPLAIN THE REASONS back of what they are doing. That was Henderson's fatal fault. He did too much ordering and too little intelligent explaining.

ALL credit buying of gasoline at retail for operation of private cars will be stopped on February 1 by ORDER of the petroleum administration. After that, you'll have to pay cash. Good enough!

For the duration, let's pay cash on the old barrel-head for as near EVERYTHING we buy as is humanly possible. Let's all come out of the war personally DEBT-FREE and with money in the bank—in the form of war bonds.

Then, when the war is over and we go through the door into the NEW world that will face us then, let's use our saved-up money MAKING JOBS FOR THE BOYS when they come back from the war.

Quintuplets Use Musterole For Chest Colds!

To Relieve Their Coughing and Make Breathing Easier

Whenever the Dionne Quintuplets catch cold—their chests, throats and backs are immediately rubbed with Musterole—a product made especially to promptly relieve coughing and tight sore aching chest muscles due to colds—it actually helps break up local congestion in the upper bronchial tract, nose and throat. Musterole gives such wonderful results because it's what so many Doctors and Nurses call a modern counter-irritant. Since it's used on the famous "Quintuplets" you can be sure it's just about the BEST cold relief you can buy! **IN 3 STRENGTHS:** Children's Mild Musterole for children and people with tender skin. Regular for ordinary cases and Extra Strength for stubborn cases.

PENNEY'S SUPPLIES for the HOME FRONT!



SLEEK FITTING - BUDGET PRICED - LEG FLATTERING
MODERN RAYON

HOSIERY

- PRACTICAL 7-THREAD WEIGHT
- SUITABLE FOR WORK OR DRESS
- FULL FASHIONED!

79¢ PR.

This is our hose for those who work and need a serviceable yet not too heavy stocking. Foot reinforced with cotton for double duty. Ringless. Sizes 8 1/2 to 10 1/2.

MAIN FLOOR

Extra Long Rayon Hose
Full fashioned for long legs and tall women. Sheer and dressy in 5-thread rayon. You'll glory in a stocking that is long enough at last! Bias heel for trim ankles. Sizes 9 1/2 to 11 only. **79¢**

Outsize Rayon Hose
A rayon hose designed for stout legs. Long wearing 10-thread rayon with a stretchy all-cotton top and reinforced foot. Full fashioned! **89¢**

Economy All Rayon Hose
Save your best and wear these budget priced hose around the house—or for work. Neutral shades. Wear remarkably well! **39¢**

Non-Run Rayon Mesh Hose
Durable run-proof mesh hose for busy workers. You'll walk a lot now and need a hose that will wear. Good looking, too! **1 19**

Slimming Ribbed Hose
With wintry winds whipping at your legs, you'll welcome these wonderfully warm ribbed lisle stockings—precious, practical and smart for everyday wear—especially with sports-wear! **98¢** Pr.

IMPORTED COTTON LISLE HOSIERY
A hose that is patriotic and goes everywhere. Wear them well and long! **1.19**

NON-RUN COTTON MESH HOSIERY
Beautiful soft cotton mesh. Warm and smart. Can't run either! **1.25**

LACEY MESH COTTON HOSIERY
Soft and leg flattering. Wear them to market—or to tea **1.25**

ECONOMY MERCERIZED COTTON HOSIERY
Ideal for around the house day in day out wear. Soft tan shades or light gun metal **35¢**

• **WHITE LISLE NURSES' HOSE** **98¢**



PENNEY'S LUSTELLE DRESSES Tonic for SPRING

Most feminine dress you could wear—excitingly lovely black, set off with frilled white! Many charmers in our big collection. Also jersey prints, pastels and many others. Sizes 9 to 44.

790 SECOND FLOOR

LADIES' POPLIN JACKETS
These come in soft beige—are water repellent. Have knit cuffs and waist. Perfect with your sports skirt, slacks or ski pants. **1 98**

HAWAIIAN PRINT BLOUSES
Exotic tropical prints so gay and attractive. Your choice of light or dark background. Stunning with slacks—or your spring sports suit! **1 98**

SPRING BUDGET BEAUTIES! JEAN NEDRA DRESSES
• SPLASHY PRINTS!
• PASTELS!
• NAVIES!
• PLEATS!
Plenty of fashion excitement in this eye-catching group! Pick a pleated print or lingerie trimmed navy! Bubbling over with fashion news. Have two—they're only 3.98. Sizes 9 to 52. **3 98** SECOND FLOOR

Cynthia Deluxe Open-Toe Sandal
In gleaming black patent or soft spring beige leather! Dressy and a real foot flatterer! **3 49**

Attractive, Dressy Spectator Pumps
The classic spectator will go everywhere! A must have for your casual dresses and suits. In navy and turt tan. **4 49**

New Spring Black Patent Pumps
The shoe for your new spring frock. Has gabardine trim—bow and small buckle. Slender dressy heel! **3 98**

TAN CALF OXFORD
Here's a perfect shoe for every hour of your busy day! Comfortable medium high heel, Cynthia last. Foot comfort galore! **4 49**

Black Gabardine Pump
Valiant little shoe that will make your foot pretty as a dream. Walled last for solid foot ease. **4 49**

Navy Gabardine Spring Pump
It's navy time again! Perky bow sets off this attractive pump for afternoon, street wear, or walking! **4 49**

• **DRESSY BLACK GABARDINE PUMP**
A favorite style—at a budget price. Medium high heel—fluted bow **2 98**
DOWNSTAIRS

TODDLERS' CHAMBRAY PLAYALLS
They can romp and play to their hearts' content in these sturdy little playalls. Three pieces including extra button-on pants. Sizes 1 to 3 **79¢**

Children's CHAMBRAY PLAY SUITS
Defense blue with red trimming. One-piece coverall. Button front and sanforized shrunk. Sizes 2 to 8 **79¢**

CHILDREN'S FLANNEL SLEEPERS
Soft, cozy two-piece flannel sleepers with feet! Protect your child these cold nights with our warm nightwear. Sizes 1 to 3 **66¢**
• Sizes 4 to 8 (1 piece) .69¢
SECOND FLOOR