

Classified Advertising Rates: 4 day run per word 10c, 5 day run per word 11c, Week run per word 12c, Month run per word 32c

Classified Advertising Section

20% DISCOUNT for payment in Advance. 5% DISCOUNT FOR Payment by the 10th. This discount given to insure prompt payment of ads charged on a monthly basis.

CLASSIFIED INDEX

Table listing classified index categories: Apartments for Rent, Automotive, Business Opportunities, Educational, Financial, For Sale or Trade, General Notices, Health, Help Wanted, Men, Help Wanted, Female, Houses For Rent, Livestock and Poultry, Lost and Found, Miscellaneous For Rent, Miscellaneous For Sale, Miscellaneous Wanted, Personal, Real Estate for Sale, Real Estate Wanted, Room and Board.

Help Wanted Female

WANTED--Women and Men Hours--Not Many--A Few For a Few Evenings Permanent--We Hope Not! Pay--The Lives You May Save. Apply at the Chamber of Commerce Phone 5193 To Be An Air Raid Warden

Help Wanted, Male

WANTED--Three Carry-All scrapers and tractors, light or 12-yard capacity. Hourly or contract basis. Apply in person or write Keith Merrill, Logging Supt., The Red River Lumber Co., Westwood, Calif. 31094f

Situations Wanted

BABYLAND--Care of babies and children. Hour, day or week. 1104 Crescent. Phone 8341. 1-4m

Rooms For Rent

HEATED ROOMS--825 High. 12-15

Automotive

WRECKER SERVICE Day 5151 Night 3360

For Sale or Trade

BUICK GARAGE 1330 MAIN 12-19

Miscellaneous For Sale

WANTED--Use of one adult, two student Community Concert tickets Tuesday night. Call at 1602 Oregon or phone 6821. 12-7

Fuel--Heating

UNION BURNER OILS--We keep your storage tank full. Call Klamath Oil Co., 8404. 12-31m

Miscellaneous For Sale

AVON PRODUCTS, Anna Funk Phone 3450 after 5. 12-8

Livestock and Poultry

FOR SALE--Fresh 5 gallon Guernsey cow. Rt 2, Box 498, So. 6th. 11-8

Financial

LOANS Established 8 Years in Klamath County--Furniture Loans--Signature Loans--Livestock Loans \$25 to \$300 Rogers Finance Co. 412 Main S-189 Dial 5113

Houses For Rent

FURNISHED two-room cabins. Highley's Market, Summers lane. Phone 8075. 37571f

Miscellaneous For Sale

FULLER BRUSHES--Clem Joyer, 1435 Martin. Phone 8677. 12-24

Financial

DINTY MOORE For AUTO LOANS PERSONAL LOANS FURNITURE LOANS Simple Credit Requirements Complete Privacy 12 Months to Pay Quick Service No Co-Signers Locally Owned Motor Investment Co. Klamath's Oldest 114 N. 7th S-241 Phone 3235

CASH LOANS

THREE LOAN PLANS NO. 1--INCOME LOANS On your sole only. No wage assignments. No co-signers. NO. 2--FURNITURE LOANS Your character is more important than the furniture itself. NO. 3--AUTO LOANS \$20 to \$500 cash loans and refinancing. CONSUMERS CREDIT COMPANY (M-235 S-230) 720 Pine St. Phone 7711

Automotive

FOR SALE--Bedroom suite, two-piece living room suite with occasional chair and lamp, dinette set, wood heater, washing machine. 327 Lincoln. Phone 8568. 12-9

For Sale or Trade

FOR SALE--Modern two-bedroom home. Lloyd W. Rusk, 1621 Arthur. Ph. 3405. 12-7

Automotive

FOR SALE--Will sacrifice my four-bedroom home. Call at 133 Grant any afternoon. \$3250. C. W. Williams. 12-8

Miscellaneous For Sale

WANTED--Blacksmith anvil, 200 or 250 lbs. Brown Equipment Co., 3049 So. 6th. 12-7

Livestock and Poultry

FOR SALE--24 high test dairy cows, Jersey and Guernsey. Chas. Dyer, Tulciacke, Calif. 12-9

Financial

LOANS Established 8 Years in Klamath County--Furniture Loans--Signature Loans--Livestock Loans \$25 to \$300 Rogers Finance Co. 412 Main S-189 Dial 5113

Markets and Financial

LEADERS TRAIL RAILS TO LOW GROUND TODAY

By VICTOR EUBANK NEW YORK, Dec. 7 (AP)—Rails turned downward in today's stock market and many leaders elsewhere followed. While weakness was confined to isolated issues, and scattered gainers were to be seen from the start, declines of fractions to a point or so ruled near the coast. Transfers were around 500,000 shares. Under water most of the time were Santa Fe, Union Pacific, Southern Pacific, Pennsylvania, Great Northern, Chesapeake & Ohio, Standard Oil (NJ), Bethlehem, Kennecott, Sperry, Chrysler, General Motors, Oliver Farm and U. S. Rubber. In the resistant division were Zenith Radio, Philco, American Telephone, Norfolk & Western, Morris & Essex, Boeing, J. C. Penney, Montgomery Ward and DuPont. Bonds were uneven with railway loans lower. Closing quotations: American Can 72 1/2, Am Car & Fdy 22 1/2, Am Tel & Tel 129 1/2, Anaconda 24 3/4, Calif Packing 20 1/2, Cat Tractor 37 1/2, Comm'n'lth & Sou 1, General Electric 29, General Motors 41 1/2, Gt Nor Ry pfd 19 1/2, Illinois Central 7 1/2, Int Harvester 55 1/2, Kennecott 27 1/2, Lockheed 18 1/2, Long-Bell "A" 21, Montgomery Ward 33 1/2, Nash-Kelvy 5 1/2, N Y Central 11 1/2, Northern Pacific 6 1/2, Pac Gas & El 22 1/2, Packard Motor 2 1/2, Penna R R 21 1/2, Republic Steel 13 1/2, Richfield Oil 6 1/2, Safeway Stores 38 1/2, Sears Roebuck 60 1/2, Southern Pacific 14 1/2, Standard Brands 3 1/2, Sunshine Mining 3 1/2, Trans-America 5 1/2, Union Oil Calif 14 1/2, Union Pacific 78 1/2, U S Steel 46 1/2, Warner Pictures 6 1/2

bulls firm, mostly \$10.00-50, calves 50. Steady; load medium 462 lb range calves \$12.00. Hogs: salable 200; unevenly steady to 10c higher; package choice 190 lb. Oregon \$14.40 extreme top, bulk 185-235 lb. barrows and gilts \$14.25-30; package sows \$13.25. Sheep: salable 1000; firm, good to choice lambs quoted \$13.50-14.25; ewes firm, quoted \$5.00-50.

Portland Produce

PORTLAND, Ore., Dec. 7 (AP)—BUTTER—First quality, maximum of 4 of 1 per cent acidity, delivered in Portland, 40-54c lb.; premium quality, maximum of 2 1/2 of 1 per cent acidity, 41 1/2-54c lb.; valley route and country points, 20 less than first or 3c; second quality at Portland 2c under first or 31 1/2-52c. CHEESE—Selling prices to Portland retailers: Tillamook triplets, 3 1/2 lb.; loaf, 22c lb.; triplets for wholesale, 20c lb.; loaf, 20c lb.; F.O.B. Tillamook. LIVE POULTRY—Buying prices: No. 1 grade Leghorn broilers, 15 to 2 lbs., 24c; colored fryers, 2 1/2 to 4 lbs., 25c; do 2-2 1/2 lbs., 26c; colored roasters, over 4 lbs., 25c; Leghorn hens under 2 lbs., 20c; over 2 1/2 lbs., 22c; colored hens 2 1/2 lb. to 2 1/4 lbs., 20c; No. 2 grade hens 5c less; No. 3 grade 10c less; roasters, 16c. DRESSED TURKEYS—Selling prices: country dressed hens, 34-40c; packers' stocks 20c; No. 1 40c; cash-carry, 41c; delivered; large hens, over 20 lbs., 25c cash-carry, 26c delivered. BABY BIRDS—Average country-killed 30c lb. ONIONS—Green, 40-50c; doz. bunches; Oregon dry, \$1.42-1.52; Idaho, large \$1.48-1.65; Yukima \$1.42-1.55 60-lb. bag; picking 15c lb. COUNTRY MEATS—Selling price to retailers: country-killed hogs, best butchers 120-140 lb., 26c; vealers, fancy 20c lb.; good, heavy, 16-18c lb.; rough, heavy, 15-20c; bulls 10c; lambs, 22-25c lb.; ewes, 18c lb. HAY—Selling prices on trucks: Alfalfa, No. 1, \$23.00-25.00 ton; oat vetch, \$18.00 ton; valley points: Timothy, \$18.00; Eastern Oregon, \$21.00 ton; clover, \$16.00 ton.

PORTLAND, Ore., Dec. 7 (AP)—USDA—CATTLE: Salable 1000, total 1150; calves: salable and total 100; market active, mostly 25-50 higher; around five loads good fed steers \$14.00-50; grass steers largely \$12.00-\$13.25; common grades downward to \$9.50; short-fed heifers \$12.25-50, grassers \$10.50-\$11.50, common dairy heifers down to \$8.00, cutters down to \$7.00; canner and cutter cows \$5.00-\$6.50, good beef cows \$10.00-75; medium to good bulls \$9.50-\$11.25, common grades down to \$8.00; vealers strong, good grades \$14.00-50, grass calves \$10.00-\$12.00. HOGS: Salable 2000, total 2200; 11 decks, arrived late, not shown; market active, 10-15 higher; good to choice lot 27-35 lbs. mostly \$13.75, odd lot drivens to \$13.85; 230-300 lbs. \$13.00-25; light lights \$12.75-\$13.00; good sows 350-550 lbs. \$11.75-12.25; choice feeder pigs 88 lbs. \$14.25. SHEEP: Salable 800, total 2800; market active, fat lambs 25 higher, some medium grades 50 up; good to choice woolled lambs \$13.25-75, medium grades \$12.00-\$13.00; good feeders \$10.00-50; odd yearlings \$7.00-\$8.00; good ewes \$4.00.

Two Down in Camp White Maneuvers

MEDFORD, Dec. 7 (AP)—Two soldiers drowned Friday in a practice crossing of the Rogue river, Camp White headquarters announced Saturday night. They did not disclose names of the men, whose bodies had not been recovered.

LEGAL NOTICES

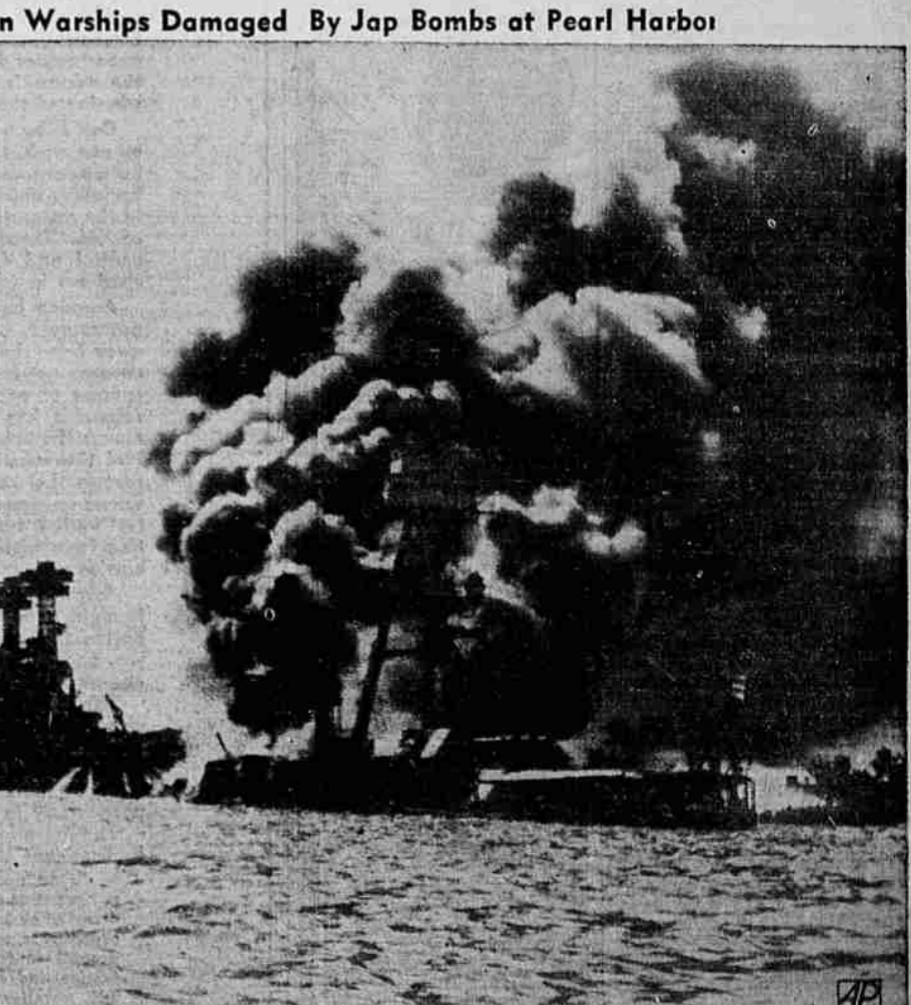
NOTICE OF SALE Notice is hereby given that pursuant to an order of the Circuit Court of the State of Oregon, for Klamath County, made on November 24, 1942, in the matter of the Guardianship of Florence F. Hanson, an insane person, the undersigned guardian will, on and after December 30, 1942, sell at private sale to the highest and best bidder, for cash or upon terms, subject to confirmation by said Court, the interest of his said ward in and to portions or all of the following described real property, title to which is held as an estate by the entirety by said ward and her said guardian, to-wit: Situate in Klamath County, Oregon, Lots 16, 17, 20, 21, 22 and 23, of Section 8, Township 35 South, Range 7, East of Willamette Meridian. Bids shall be in writing addressed to Frank E. Hanson, Chilquin, Oregon. Dated: November 30, 1942. FRANK E. HANSON, Guardian of Florence F. Hanson, an insane person. N 30; D 7-14-21-28--No. 147

WHEAT

CHICAGO, Dec. 7 (AP)—Early market strength that raised prices almost a cent a bushel faded today and, as buying subsided, quotations retreated to small net losses in some cases. December contracts, on which deliveries are now being made, were must in demand, apparently reflecting the fact that spot grain prices are quoted several cents higher than futures. This was offset, however, by profit taking and increased caution of most dealers due to the fact that at the day's high prices were around top levels in the last two or three months. Wheat closed 1/8 higher to 1/4 lower compared with Saturday, December \$1.27 1/2, May \$1.30 1/2; corn 1/8 down, December 87-87 1/2, May 91-90 1/2; oats 1-1/2 lower; rye unchanged to 1/8 off; soybeans 1/4 higher.

LIVESTOCK

SOUTH SAN FRANCISCO, Dec. 7 (AP) (Federal State Market News)—Cattle: salable 300; steers scarce; medium to good quoted \$12.50-13.25; package grass heifers \$10.50; mostly she stock run, active. Steady to strong; good range cows quoted \$9.75-10.25; bulk aged medium range cows \$8.50-9.25, few heavy dairy cows \$8.00, cutters \$7.00-75, canners \$6.00-50.



A beautiful room costs only \$2.98 WHEN YOU USE XENOTONE THE MIRACLE WALL FINISH BIG BASIN LBR. CO. Main & Spring Phone 3144 SHERWIN-WILLIAMS PAINTS

Courthouse Records Monday Justice Court Ted Weigman, Defrauding an inkeeper. Fined \$50. \$40 suspended provided he pay damages to complaining witness. George Smith, Defrauding an inkeeper. Fined \$50. \$40 suspended provided he pay damages to complaining witness. Angelo Doveri, Failure to exhibit operator's license. Released on own recognition. Clinton Buell Aaen, Operating a motor vehicle of excessive height. Continued. \$10 bail posted. John Munnikns, Operating a motor vehicle of excessive height. Continued. \$10 bail posted. Jean Richard Bradley, No chauffeur's license. Fined \$5.50. During 1940, 10,102 persons visited Fort Laramie national monument, Wyoming.

American Warships Damaged By Jap Bombs at Pearl Harbor. Testifying to the extent of the Jap attack on Pearl Harbor, December 7, 1941 are these three U. S. battleships hit from the air. Left to right: U. S. S. West Virginia, severely damaged; U. S. S. Tennessee, damaged, and U. S. S. Arizona, sunk. This is an official U. S. navy photo.