

ARMY OKES REAL ESTATE MEET HERE

U. S. army authorities have granted permission for the Oregon Association of Real Estate boards to hold their eighth annual convention in Klamath Falls August 6, 7 and 8, Larry W. Bome, secretary, has advised Frank Ira White of the local realty board.

Plans for special railroad coaches to be attached to the train from Portland arriving here the evening of August 5, are being developed to provide transportation for the greater part of the delegation from Portland. It is clearly understood that the military authority could cancel the permission granted at any time, if circumstances should dictate such action.

With such assurance, however, the officers of the Oregon association have announced the program for the three-day session, as follows:

THURSDAY, 11 A. M.
 Officer of the day, J. Fred Braly, Albany; meeting chairman, Robert W. Prescott, Eugene; "Farm Appraisal," Frank L. Kinsey, Eugene; discussion leader, H. A. Dryer, Portland.

THURSDAY, 12:30 P. M.—Luncheon
 Officer of the day, J. Fred Braly, Albany; meeting chairman, J. L. Ketch, McMinnville, H. A. Whitford, Vancouver; farm sales, "Promotion," Ed. C. Coates, Grants Pass; farm sales, "Financing," Reade St. Ireland, Portland; discussion leader, C. T. Johnson, Salem.

THURSDAY, 3:30 P. M.—Banquet
 Meeting chairman, Chester A. Moore, Portland; speaker, Dr. Donald Erb, president, University of Oregon.

FRIDAY, 12:30 A. M.—Breakfast
 Officer of the day, A. D. Newman, Portland; meeting chairman, F. H. Parrott, Portland; "Residential Sales," N. Thomas Flood, Portland; discussion leader, Henry N. Anderson, Portland.

FRIDAY, 11 A. M.
 Officer of the day, A. D. Newman, Portland; meeting chairman, F. H. Parrott, Portland; "Residential Financing," C. M. Gartzel, chairman, Portland housing authority; discussion leader, Joseph A. Nance, Portland.

FRIDAY, 11:30 P. M.—Luncheon
 Officer of the day, A. D. Newman, Portland; meeting chairman, Commissioner C. H. Murphy; "quo," state real estate board of commissioners.

FRIDAY, 1 P. M.—Open Dinner
 "Klamath Night," patriotic spectacle at high school auditorium; Claude G. Stotts, Marshfield.

SATURDAY, 9:30 A. M.—Breakfast
 Officer of the day, E. M. Chiles, Klamath Falls; meeting chairman, C. H. Derrie, Portland; "Legal Real Estate," W. E. Shively, Portland; discussion leader, E. E. Shively, Portland.

SATURDAY, 10 A. M.—UNTIL NOON
 Officer of the day, E. M. Chiles, Klamath Falls; meeting chairman, E. H. Peterson, Eugene; small business property (a) appraisal, W. J. Falloon, Portland; (b) sale, F. E. Arnold, Portland; discussion leaders, M. J. Holbrook, W. L. Shively, Portland.

SATURDAY, 11:30 P. M.
 Annual Business Meeting
 Meeting chairman, M. C. Holbrook, Portland; election of officers, committee reports, etc.

THURSDAY, 1:30 P. M.
 Meeting chairman, M. C. Holbrook, Portland; "The War and Realtors," David B. Simpson, president, National Association of Real Estate Boards; "Radio Broadcast," Howard J. Burnham, Vancouver; inauguration of officers.

Greece Signs Lend-Lease Pact

WASHINGTON, July 10 (AP)—Secretary of State Hull and Prime Minister Emanuel L. Tsouderos of the Greek government in exile signed a master lend-lease pact today following the reaching of a "complete agreement on war objectives" by President Roosevelt and King George II yesterday.

Six other United Nations—Great Britain, China, Russia, Belgium, Poland and the Netherlands—already have concluded similar agreements with the United States pledging mutual aid toward a common victory and post-war collaboration in promoting mutually advantageous economic relations.

It's more fun to give than to lend—and often costs about the same.

Lots of people walk to reduce and, these days, lots of others are reduced to walking.

Some folks drop in for a visit—others just visit for a drop.

There are over 3000 known dialects not counting the baby's—'cause that isn't known.

The smoke from American factories is the smoke of battle.—Wendell Lund, WPB official.

The leather in a pair of men's oxfords would make an officer's pistol holster.

FILMS
 Developed and Printed
25c
 Any 8 or 8 exposure roll. Reprints 3c each. In at 10:30 — Out at 5:00

BUD'S PHOTO SERVICE
 Postoffice Box 921
 1031 Main St.



Sharon Derer of Chicago, whose parents have kept a record of her expenses from the day she was born, wore a determined look as she cut her third birthday cake. Her mother, Mrs. Joseph Derer (left), held the budget book which showed that Sharon's expenses—including the cake—was \$779.16 for three years.

Floods Spread Havoc in Wide Area of Mid-West

By The Associated Press
 Flooded creeks in the Missouri-Illinois-Kentucky area have claimed six lives and have caused widespread property damage, stopping industrial operations for a full day in Belleville, Ill., and shutting down several large war plants in St. Louis.

At Salem, Ill., the gigantic reservoir of the Chicago and Eastern Illinois railroad was breached by water rushing through the spillway, tearing a gap 60 feet wide and gushing thousands of gallons into adjoining lowlands.

A creek, running through Belleville and normally only 20 to 30 feet wide, spread out over

a mile in some places and flooded the generating plant of the Illinois-Iowa Power company. Engineers worked in waist-deep water in an effort to maintain service, but a series of explosions, caused by short circuits, forced them to pull the switches.

Three men were reported drowned in eastern Kentucky Wednesday, two of them while trying to rescue marooned families. Roy Raver, 40, fireman of Salem, was swept by his death in a flooded creek while helping pull a stranded automobile from the water.

Two boys were drowned in St. Louis county yesterday. They attempted to cross a road covered with four feet of water.

'Hoppers Invade Four Eastern Oregon Counties

PENDELTON, July 10 (AP)—Umatilla, Gilliam, Morrow and Grant counties were reported today to be facing the worst grasshopper plague in years, although crop damage has not yet become extensive.

Several stands of alfalfa and green wheat have been destroyed close to foothill regions from which the grasshoppers are working their way down toward valley lands.

Four poison bait spreading machines, three of them government owned, are operating in Umatilla county, most extensively in the Echo, Stanfield and Hermiston district. Federal and county agents are providing equipment and materials for farmers to combat the pests in other infested areas.

The miners' lanterns of Lidice have been blacked out by Hitler, but they have cast tongues of flame to light the whole world with tomorrow's freedom.—Leo Krzycki, president American Slav congress.

Bridge playing discourages conversation—but, like golf, often improves the vocabulary.

SAN FRANCISCO'S
 Finest Moderately Priced Hotel
OXFORD
 BEST ROOM WITH TUB & SHOWER
 ONE PERSON 2 & 2.50
 TWO PERSONS 2.50 & 3
 (CONTINENTAL BREAKFAST INCLUDED)
 MASON OF MARKET ST.

LAST AMERICAN Cabaret Bows Out Of Alexandria

ALEXANDRIA, July 10 (AP)—The last American cabaret bowed out from this corner of the world today when four American showgirls packed up their lipstick, rouge and 22 pieces of luggage and started for home.

They had been away from the United States for nine years and for the past three had braved bombs to entertain the allied forces.

With the axis hammering at the approach to Alexandria, those who finally decided to heed the repeated advice of the United States consulate were the sisters, Theodora and Sylvia Deperbach of Hollywood and Oakland, Calif., Zelma Wright of Los Angeles, and Maxine Young of Chicago.

Two song-and-dance brothers, Al and Val Heno of Hartford, Conn., who helped stage revues for British service men, also packed up and headed home.

The United States has 15 telephones per 100 population.

LADY BOSS HIRES MALE SECRETARY—A RIOT!

"Take a Letter, Darling"

RUSSELL
 FEATURING
MacMURRAY
 and
CAREY BENCHLEY
 (SINGING)

STARTS SATURDAY MIDNIGHT
 • ESQUIRE THEATRE •

PALACE MARKET
 GROCERIES AND MEATS
 Phone 4109 A Home Owned Store 524 Main St. Free Delivery Phone 4109
 Free Parking... Customer Parking Lot at 5th and Pine... We Reserve Right to Limit

Specials for Saturday Only

Gr. Beans . . . 2 lbs. 23c	Shoulder Veal Steak . . . Lb. 30c
Cabbage Lb. 4c	Pot Roast . . . Lb. 27 1/2c
Corn Ear 5c	Boneless Stew Beef . . . Lb. 30c
Watermelons . . . Lb. 4c	Shoulder Pork Roast . . Lb. 28 1/2c

Specials for Saturday and Monday

Fannings Bread & Butter Pickles Bottle 17c	Var Brite Floor Wax Quart 98c	Table Queen Salad Dressing Quart 29c
Miracle Ade All Flavors Pkg. 5c	Royal Club Coffee 3 Lbs. 98c	Paper Plates Cups - Napkins 2 for 25c
	Florida Gold Grapefruit No. 2 Can 19c	Swift's Milk 3 Large Cans 27c

Fred McDonald Is Still in Business As Malin Barber

Fred McDonald, Malin barber, wants the public to know that he isn't leaving Malin, and is still doing business there.

Last week, an erroneous item in The Herald and News Malin correspondence stated McDonald was leaving for a defense job.

On the contrary, McDonald said today, he is still in the barber business of Malin and he wants his customers to know about it.

The Herald and News is sorry about the error.

Chilled Fruit Desserts for Hot July Days

By MRS. GAYNOR MADDOX
 NEA Service Staff Writer

Chilled fruit desserts are welcome on warm days. So are other easy-to-prepare desserts, especially those using little sugar.

Fruit Cream Pie
 One and one-third cups (15 oz. can) sweetened condensed milk, 1 cup lemon juice, 1 cup fruit, 1 cup whipping cream, baked pie shell (9-inch).

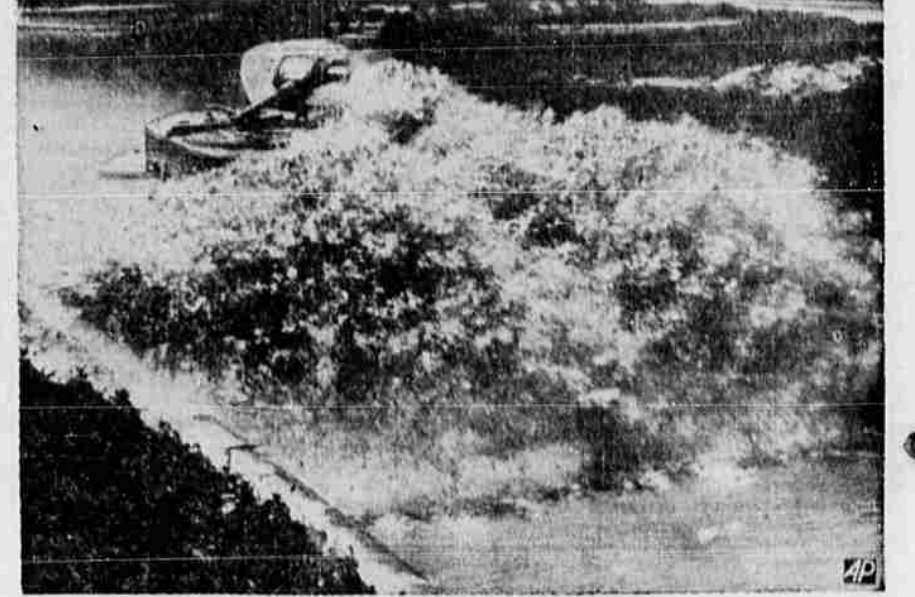
Blend sweetened condensed milk and lemon juice. Stir until mixture thickens. Fold in prepared fruit. Pour into baked pie shell. Cover with whipped cream, sweetened with confectioners' sugar, if desired. Chill before serving.

Fruit desserts have an additional advantage these days because many of them require little or no sugar. Here's one that is appetizing and nutritious and needs no sugar at all.

Chocolate Orange Tarts
 Two squares (2 oz.) unsweetened chocolate, 1 1/3 cups (15 oz. can) sweetened condensed milk, 1 cup orange juice, grated rind of 1 orange, 2 oranges, 8 baked tart shells.

Melt chocolate in top of double

U. S. Tank Crashes Through Water in Army Test



So that maintenance experts at the ordnance training center at Aberdeen, Md., could study the effect of a heavy water bath on its workings, the crew of a medium tank sent it crashing through a water course. The maneuver churned up a wall of water, thoroughly dousing the fighting machine. Maintenance men have found that water alone, seldom stops a tank.—U. S. army signal corps photo.

boiler. Add sweetened condensed milk and stir over rapidly boiling water 5 minutes until mixture thickens. Remove from heat. Add orange juice and rind and blend thoroughly. Cut orange sections into small pieces, free from membrane and arrange in baked tart shells. Cover with chocolate mixture. Chill.

It would be a mistake to try to make another rigid blueprint as to boundaries. I would not even quite agree that the time has come to fix the western limits of communism.—Prof. Sidney

B. Fay of Harvard. A woman's mouton coat contains enough material to line a war flier's sheepskin-lined jacket.

To Relieve MONTHLY FEMALE PAIN
 Women who suffer pain of irregular periods with cranky nervousness—due to monthly functional disturbances—should try Lydia E. Pinkham's Vegetable Compound to relieve such distress. Made especially for women. Follow label directions. (WORTH TRYING!)
LYDIA E. PINKHAM'S VEGETABLE COMPOUND

SEARS SIZZLER!
 Featured Tomorrow Only!
 Summer Ties **29c**
 Men's Regular 49c. Saturday Only

SEARS ROEBUCK & CO.

WHEATIES Lge. Pkg. 10c	RAISINS 4-Lb. Pkg. 32c	Snowflake CRACKERS 2-Lb. Box 31c	Drifted Snow FLOUR 49-Lb. \$1.93 Bag 24 1/2-Lb. Bag 98c	Swansdown FLOUR 49-Lb. \$1.89 Bag 24 1/2-Lb. Bag 98c
---	---	---	--	---

SAVE TIME
 SHOP IN OUR MODERN STORE
 YOU'RE SURE TO FIND FOOD BUYS GALORE!

PRICES EFFECTIVE FRIDAY, SATURDAY AND MONDAY

Corn Diamond A No. 2 Can	2 for 29c
Beans Diamond A Cut No. 2 Can	2 for 29c
Salad Type Beans Diamond A No. 2 Can	17c
Vegetable Salad Diamond A No. 1 Tall Can	14c
Peas and Carrots Diamond A Tall Can	2 for 25c
Hominy TruPak No. 2 1/2 Can	15c
Peas Garden Brand No. 303 Can	3 for 25c
Corn Tender Sweet No. 303 Can	3 for 29c
Peas Libby's No. 303 Can	2 for 25c
Tomatoes Silverdale No. 2 1/2 Can	4 for 45c
Tomatoes Del Monte Tall Can	3 for 35c
Peaches Libby's Freestone No. 2 1/2 Can	27c
Peaches Del Haven Cling Sliced or Halves No. 2 1/2 Can	22c
Pears Del Haven No. 2 1/2 Can	22c
Pineapple Royal Club Dessert Cuts No. 2 1/2 Can	29c
Pineapple Garden Brand 8 Whole Slices No. 2 1/2 Can	27c
Fruit Cocktail Libby's No. 1 Tall Can	2 for 29c
No. 2 1/2 Can	25c
Strained Baby Food Clapps	3 Cans 20c
Swift Prem Can	35c

Corn on the Cob Del Monte Lge. Can	19c
Corned Beef Swift 12-Oz. Can	27c
Corned Beef Hash Rath Tall Can	22c
Macaroni Franco-American No. 1 Tall Can	11c
Spaghetti Franco-American No. 1 Tall Can	10c
Deep Brown Beans Libby's Can	10c
Pork & Beans Garden Brand No. 2 1/2 2 for	25c
Campbell Soup . . . 3 Cans	29c
Tomato 3 Cans	25c
Mushroom & Chicken	11c
Pickles Party Time Genuine Dills, 54-Oz. Glass Jar	35c
Olives Sequoia Fancy, Large, Ripe Quart Can	39c
Syrup Tea Garden Drip, 5-Lb. Tin	69c
Apple Sauce Royal Club No. 2 Tin	2 for 25c
Ruskets Vitaminized 2 Pkgs.	19c
Certo 3 bottles for 45c	
Sure-Jell 3 packages 27c	
NPC Pectin 3 packages 25c	
Fruit Jars, Kerr, Reg. Qts. 83c	
Fruit Jars, Kerr Wide Mouth Qts. 98c	
Economy Lids Pkg. 19c	
Jar Rubbers 2 pkgs. 9c	
Kerr Reg. Lids 3 pkgs. 29c	
Boraxo 2 cans 25c	
Borax Chips Lge. pkg. 23c	

EMIL'S QUALITY MEATS
 Emil's Meat Markets now under new supervision—and offer you the highest quality meats available at the lowest possible price—and guarantee your satisfaction on every purchase.

Skinless Wieners, Lb. 29c

Lunch Meats, Best Quality Lb. 35c

Rib or Sirloin Steak Lb. 37c

Ham Center Slices 2 for 23c

PRODUCE SPECIALS FRIDAY and SATURDAY

Cantaloupes Extra Large 2 for 29c

Cherries Bing's, Rogue River, By the 7-ug. Lb. 8 1/2c

Peaches Santa Rosa 3 Lbs. 29c

Sun-Best Lemons Large Size, Doz. 25c

Cucumbers Long Slender 2 for 15c

Watermelons, Lb. 4c

Youngberries and Boysenberries Crate \$1.15

Pie Cherries, extra large fancy. Local Strawberries, Raspberries, Loganberries. Local Turnips, Beets, Radishes and Onions Bu. 5c

HOT SAUCE Del Haven 6 Cans 25c	FORMAY SHORTENING 3 Lb. Pall 69c	Snowdrift 3 Lb. 73c 6-Lb. Pall \$1.45	CHEESE Klamath Full Cream Lb. 27c	WALNUT MEATS Fancy Halves Lb. 55c
---	---	--	--	--

Libby's Tomato Juice No. 300 Can 6 for 45c

V-8 Vegetable Juice 46-Oz. Can **29c**

Emil's
 Right Reserved To Limit Quantities
 SUPER MARKET STORE NO. 2 8th and Pine. Ph. 3167 1398 Ore. Ave. Ph. 4714 STORE NO. 3 2200 So. 8th Ph. 6875

Texas Grapefruit Juice Garden Brand 46-Oz. Can **22c**

Sunsweet Prune Juice Qt. **25c**