

# RALLYING SAP DOOZES OUT OF STOCK MARKET

NEW YORK, July 10 (AP)—The rallying sap oozed out of the stock market today as profits were cashed on the lengthy advance and some buyers stood aside to await international developments over the weekend.

Prices of several leaders stiffened in the closing hour and, while there were scattered minus marks of a point or so, losses generally were in small fractions.

Stocks down most of the day—some revived eventually—included U. S. Steel, American Telephone, Santa Fe, Chrysler, General Motors, Anaconda, Sears Roebuck, American Smelting and Goodyear.

Bonds and commodities were irregularly lower.

Closing quotations:

American Can	66 1/2
Am Car & Fdy	26
Am Tel & Tel	115 1/2
Anaconda	26 1/2
Cat Tractor	36 1/2
Commonwealth & Sou	37 1/2
General Electric	27 1/2
General Motors	39 1/2
Gi Nor Ry pfd	22 1/2
Lois Central	7
Int Harvester	40
Kennecott	30 1/2
Lockheed	17 1/2
Montgomery Ward	30 1/2
Nash-Kelvy	51
N Y Central	8 1/2
Northern Pacific	5 1/2
Pac Gas & El	19 1/2
Packard Motor	21
Penna R R	20 1/2
Republic Steel	15 1/2
Richfield Oil	7 1/2
Safeway Stores	34 1/2
Sears Roebuck	54 1/2
Southern Pacific	13
Standard Brands	3 1/2
Sunshine Mining	4 1/2
Trans-America	4 1/2
Union Oil Calif	11 1/2
Union Pacific	70 1/2
U S Steel	50 1/2
Warner Pictures	5 1/2

# PINE LUMBER FALLS BEHIND

PORTLAND, Ore., July 10 (AP)—Pine lumber production, shipments and orders for the week ending July 4, including the holiday, were below the previous week's total but ahead of the corresponding week a year ago, the Western Pine association reported today.

Orders amounted to 80,300,000 board feet compared to 94,726,000 the previous week and 79,263,000 last year. Shipments total 76,272,000 while they were 85,499,000 the week before and 72,220,000 in 1941. Production was 74,560,000 compared to 88,000,000 the previous week and 67,684,000 a year ago.

**CHICAGO WHEAT**

CHICAGO, July 10 (AP)—Hedging and profit taking sales today applied brakes to the wheat market's advance but not until prices had scored net gains of about a cent and had received new peaks since late in May. Closing quotations were lower than yesterday.

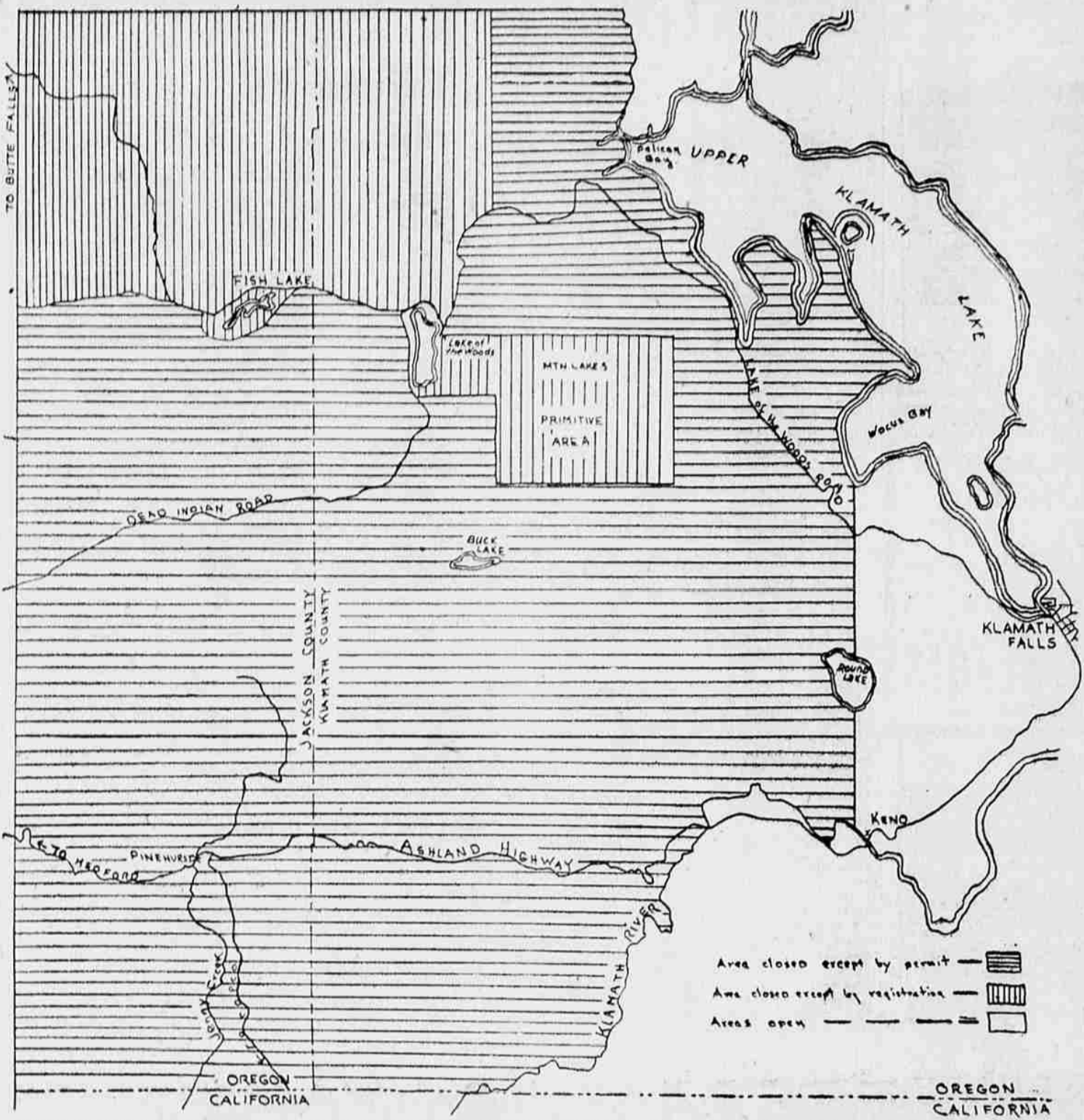
Further flour buying, which brought millers into the market for more wheat, helped to strengthen prices at times, offsetting selling attracted by the 7 cents price advance scored this week and associated with movement of the new crop. Traders estimated flour purchases at 250,000 barrels, bringing the total business of the week to about 1,000,000 barrels, largest for any such period since immediately after American entrance into the war.

Wheat closed 1/4-c lower than yesterday, July 120 1/4, September 123-123 1/2; corn 1-1/2 down, July 86 1/2; September 89 1/2; oats 1-1/2 off; rye 1-1/2 lower; soybeans 1-2/3 lower.



Catherine van Rensselaer of New York, one-time ambulance and truck driver in France, will direct physical training of Women's Army Auxiliary Corps officers at Fort Des Moines, Ia.

# Map Shows Forest Closures in Area Generally West of Klamath



This map shows closure regulations now in force in the big expanse of forest land generally west of Klamath Falls. This land lies in the Rogue River national forest and in the area protected by the Klamath Forest Protective association. The area shown by horizontal lines, which is closed to travel except by permit, is to be traversed only on business. Recreational travel is permitted in the areas shown by vertical lines. Roads shown on the map may be traveled. Open to recreationists, with registration, is the Mountain Lakes primitive area. Blue canyon, Seven Lakes, Huckleberry mountain, Lake o' the Woods, Fish lake and Rocky Point. Hiatt lake is not closed.

# 9 MILLION BUSHEL WHEAT CROP SEEN

WASHINGTON, July 10 (AP)—The agriculture department today forecast this year's corn crop at 2,627,823,000 bushels and reported the indicated production of all wheat, winter and spring, was 904,288,000 bushels.

The wheat crop was forecast a month ago at 868,059,000 bushels. Production was 945,037,000 bushels last year, and the 10-year average production was 747,507,000 bushels.

The winter wheat crop was placed at 675,482,000 bushels for this year, as compared with 646,931,000 a month ago, 671,293,000 produced last year, and a 10-year average production of 509,417,000.

The spring wheat crop was forecast at 228,806,000 bushels, compared with 221,128,000 a month ago, 274,644,000 last year, and 178,090,000, the 10-year average.

Durum wheat, included in spring wheat, was forecast at 32,321,000 bushels, compared with 41,300,000 last year, and 27,508,000, the 10-year average.

The potato crop this year was forecast at 369,825,000 bushels, compared with 357,783,000 last year, and 370,045,000, the ten-year average.

The indicated production of other crops, with comparative figures for a month ago (for crops of which a forecast was made then), last year's production and the 1930-39 ten-year average production, follow:

Barley, 403,345,000 bushels, compared with 401,843,000 a month ago, 358,709,000 last year and 224,070,000 the 10-year average.

Sugar beets 12,457,000 tons; flax 10,311,000 and 9,284,000.

Hogs 38,368,000 lbs.; blank; 40,380,000 and 34,784,000.

# Navy Men Gave Lives to Save Wounded in Coral Sea

SAN FRANCISCO, July 10 (AP)—Making room for the wounded, U. S. navy men leaped overboard from overcrowded whaleboats and sacrificed their lives in the battle of the Coral sea, it was disclosed here by two survivors of the U. S. naval tanker Neosho.

The story of gallantry was related by E. A. Flaherty, 22, electrician's mate, third class, Laurel, Mont.

They were on the Neosho when she was blasted by Japanese bombs last May 5. Flaherty related that all hands were ordered to abandon ship, and the whaleboats were launched.

When it became evident that there would not be room for everyone in the two boats, a naval reserve lieutenant, Henry K. Bradford, ordered the injured out of the boats to make places for the wounded.

"He led the way himself," said Flaherty, "plunging into the water and grabbing a towline on the boat."

Eventually, the lieutenant and some of the enlisted men of those who leaped were saved, but the others—about a dozen—swam until they sank from exhaustion, or were killed by the sharks, for which the Coral sea is notorious.

Rescue was five days in coming. It came in the shape of a U. S. destroyer which picked up the survivors and torpedoed the derelict Neosho, which was still afloat.

Flaherty was among the injured. He was burned about the face and upper body. Nelson was unhurt, but did not leap overboard because he had been placed in charge of one of the

# Meeting Slated To Decide on 4-H Fat Stock Show

SALEM, July 10 (AP)—Director of Agriculture J. D. Mickle said today he would meet with Governor Sprague and 4-H club leaders early next week to decide whether to hold a 4-H club stock show early in September.

In spite of a statement received from Senator McNary today that all county and state fairs would be held as scheduled, Mickle said there probably won't be any Oregon state fair. He said the stock show merely would give 4-H club youths a chance to sell their stock, and would not attract a large gathering.

McNary's telegram said that the recommendation by Joseph B. Eastman, director of defense transportation, that fairs should be cancelled, should be disregarded as it is merely a request instead of a ruling.

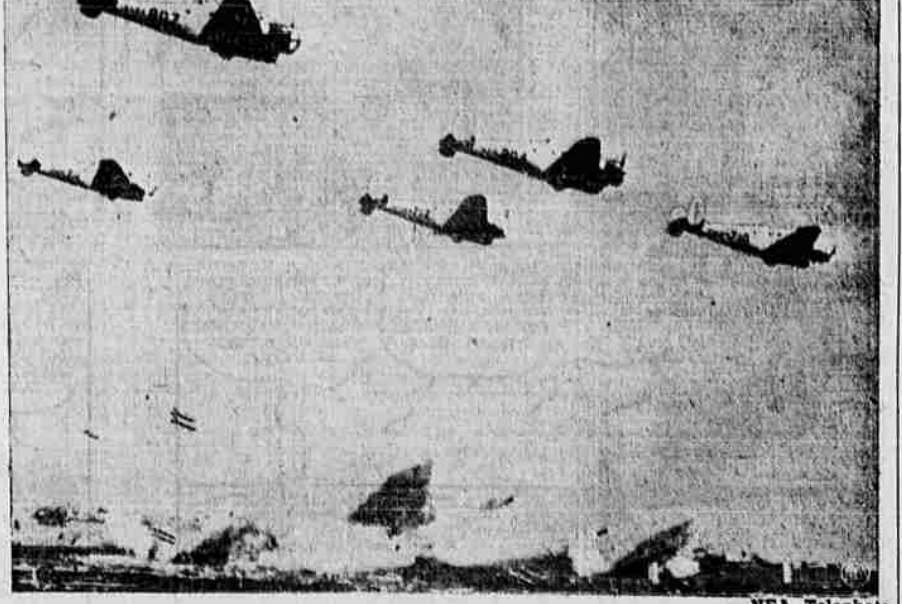
Governor Sprague is known to oppose the state fair, largely because of the rubber shortage.

# POTATOES

CHICAGO, July 10 (AP-USA)—Potatoes, arrivals 64; on track 225; total US shipments 502; supplies moderate, demand fair; market for Bliss Triumphs stronger, for California Long Whites, slightly stronger, for Cobblers steady; California Long Whites, US No. 1, \$3.80-85; Texas Bliss Triumphs, US No. 1, \$4.25; Arkansas Bliss Triumphs, US No. 1, \$2.00-20; Missouri Cobblers, US No. 1, \$2.00-15; Bliss Triumphs, US No. 1, \$2.25-60.

There won't be a pound of synthetic rubber for new civilian passenger cars for the next year—Arthur B. Newhall, rubber coordinator.

# Tokyo (Texas) Takes a Pasting in July 4th Show



"Tokyo" took a blasting on the Fourth of July. Unfortunately, the Tokyo in this case was a scaled miniature model of the Japanese capital built at the army's Midland, Tex., air training school where low-flying training bombers are shown dropping 100-pound bombs on the industrial section of the "city."

# FOR SIGNS BILL FOR MAMMOTH NAVY PROGRAM

WASHINGTON, July 10 (AP)—President Roosevelt signed legislation today authorizing the construction of 1,900,000 tons of additional combat ships and auxiliary vessels for the navy.

The new combat ship tonnage, raising to 5,649,480 the authorized strength of the navy, is expected to be in service by the end of 1946.

"It will give us the largest navy in the world," commented Chairman Vinson (D-Go.) of the house naval affairs committee. "It provides not only for a two-ocean navy, but for a seven-ocean navy, one that will win the war and keep it won."

Included in the new fighting ship tonnage, for which congress has appropriated \$8,550,000,000, are 500,000 tons of aircraft carriers, 500,000 tons of cruisers and 900,000 tons of destroyers and destroyer escort ships.

Congress previously had authorized the construction of 3,749,480 tons of fighting ships, of which, Vinson said, 1,009,245 tons now are in service and 2,748,606 tons are under construction. The navy estimated that the last keel under the expanded program would be laid by December 31, 1944.

Vinson said right-of-way would be given to construction of the aircraft carriers, with the cruiser and destroyer program being started early next year.

The 1,200,000 tons of auxiliary vessels, such as tenders and service ships, brings to 2,550,000 tons the authorized auxiliary tonnage, the cost of which was not estimated.

# Churches

(Continued from Page Nine)

**First Baptist Church**  
Eighth street at Washington. "The Church With a Message." Rev. Cecil C. Brown, pastor. Residence, 414 North Eighth street. Phone 7439. H. G. Shirey, music director.  
Bible school, 9:45 a. m., with interesting classes for every age group and consecrated teachers in charge. George O. Welch, superintendent.  
Morning worship service, 11 o'clock. Sermon by the pastor. C. R. Larson is general director of the BTU which meets at 7 p. m. each Sunday. There are six unions adapted to all age groups from beginners to adults, and inspiring programs are presented in each union.  
The pastor will speak again at the 8 o'clock worship service.  
Mid-week prayer service Wednesday evening at 7:30 o'clock. Choir rehearsal Thursday at 7:30 p. m.  
Radio service each Sunday morning over KFJI from 8:30 to 9 o'clock.

**Sacred Heart Catholic Church**  
Corner of Eighth and High streets. Rev. T. P. Casey, pastor.  
Sunday masses are at 6 a. m., 8 a. m., 9:30 a. m., and 11 a. m. Holy days at 6 a. m., 8 a. m., and 9:30 a. m.  
First Fridays at 6 a. m., and 8 a. m.  
Confessions every Saturday and the eves of Holy days and first Fridays from 3 to 4 p. m., and 7:30 to 8:30 p. m.  
Daily mass at 8 a. m.

**First Church of Christ Scientist**  
Tenth and Washington streets. This church, a branch of The Mother Church, the First Church of Christ, Scientist, in Boston, Mass., holds service each Sunday morning at 11 o'clock. Subject of lesson-sermon for next Sunday, "Sacrament."  
Sunday school at 9:30 a. m. A meeting which includes testimonies of Christian Science healing is held every Wednesday evening at 8 o'clock.  
A free Christian Science reading room is located in the First National Bank building, Sixth and Main streets, where the Bible, writings by Mary Baker Eddy, and authorized Christian Science literature may be read, borrowed or purchased.  
All are cordially invited to attend the services and use the reading room.  
Radio program KFJI, 2 to 2:15 p. m. each Monday under the direction of committee on publication for Oregon.

**St. Paul's Episcopal**  
Eighth street at Jefferson. Victor E. Newman, rector.  
The Holy Eucharist each Sunday at 8 o'clock. Church school at 11 o'clock.  
The Holy Eucharist at 11 a. m. on the first, third and fifth Sundays.  
Morning prayer at 11 o'clock on the second and fourth Sundays.  
On Saints' days and Holy days the Holy Eucharist at 14 o'clock.

**Pilgrim Holiness Church**  
Located at 2229 Wantland avenue, Rev. Sherman Moore, pastor.  
This church is privileged to have "The King's Envoy's," ladies' quartet from Pacific Bible college, Huntington Park, Calif., for a four-day convention which started Thursday and will close Sunday. Accompanying the ladies will be Rev. C. P. Haggard, president of the college. The services of this party are highly commended to the people of Klamath Falls.  
Regular church services on Sunday are Sunday school, 9:45 a. m., morning worship, 11 a. m., Junior Pilgrim League, 6:30 p. m., evening worship, 7:45 p. m. Prayer meeting will be Wednesday at 7:45 o'clock and Bible study Friday at 2 p. m.

**Letter-Day Saints**  
Located in the clubrooms of the city library at the corner of Fifth street and Klamath avenue. E. E. Burrows, branch president, phone 6721 or 8293.  
Sunday school convenes at 10 a. m., with separation at 11:30 for priesthood class, Relief society, primary and a special "in between" group.  
Sacrament service is held each Sunday evening at 7:30 and the public is welcome at all meetings.

# RESCUE WORKERS LOCATE 20 DEAD

MORGANTOWN, W. Va., July 10 (AP)—Rescue workers early today located the bodies of 20 men in the Purglove company's No. 2 mine, where an explosion and a fire yesterday trapped two crews of miners 4 1/2 miles inside the workings.  
Eighteen of them were tentatively identified.  
Company officials said 70 of the mine's 300 employees were inside at the time of the blast and that 26 men had been definitely checked off as safe. Many others, however, began aiding the rescue work without reporting their escape.  
Within a few minutes after the blast, a silent crowd, including wives and children of the trapped men, gathered to await eagerly the bits of news which rescuers might report.  
About a year ago, No. 2 mine received a U. S. bureau of mines award for producing more than 3,000,000 tons of coal without a fatal accident.

# GN Dispatcher Moved to Montana

E. R. Joyce, chief dispatcher on the Klamath division of the Great Northern since 1938, has been transferred to Whitefish, Mont., the GN office said today.  
Replacing him will be J. R. McClellan, formerly night chief dispatcher at Great Falls, Mont. McClellan is scheduled to arrive here within the next few days.

# Assembly of God

746 Oak street. Rev. A. Harold Persing, pastor, residence, 844 Eldorado street, phone 8735.  
Sunday school at 9:45. We invite you to our school for Bible education.  
Morning worship beginning at 11 a. m., pastor speaking.  
Young people's service at 6:15 p. m.  
Evangelistic service at 8 p. m. Wednesday the Ladies Missionary society meets at the church at 10 o'clock.  
Thursday night at 8 p. m., devotional service and preaching. We cordially invite you to attend.  
Toastmistress Club—Last meeting of the summer will be held Monday evening at 7:30 in the Fremont school. Election of officers will be held. After this meeting, the club will re-convene in September.

**SATURDAY SPECIAL**  
Shipment Just Received

**Fresh Fig Bars . . 2 lbs. 25c**

Because of This Special Price We Must Limit Quantity to 2 lbs. to a Customer

**MONTGOMERY WARD**