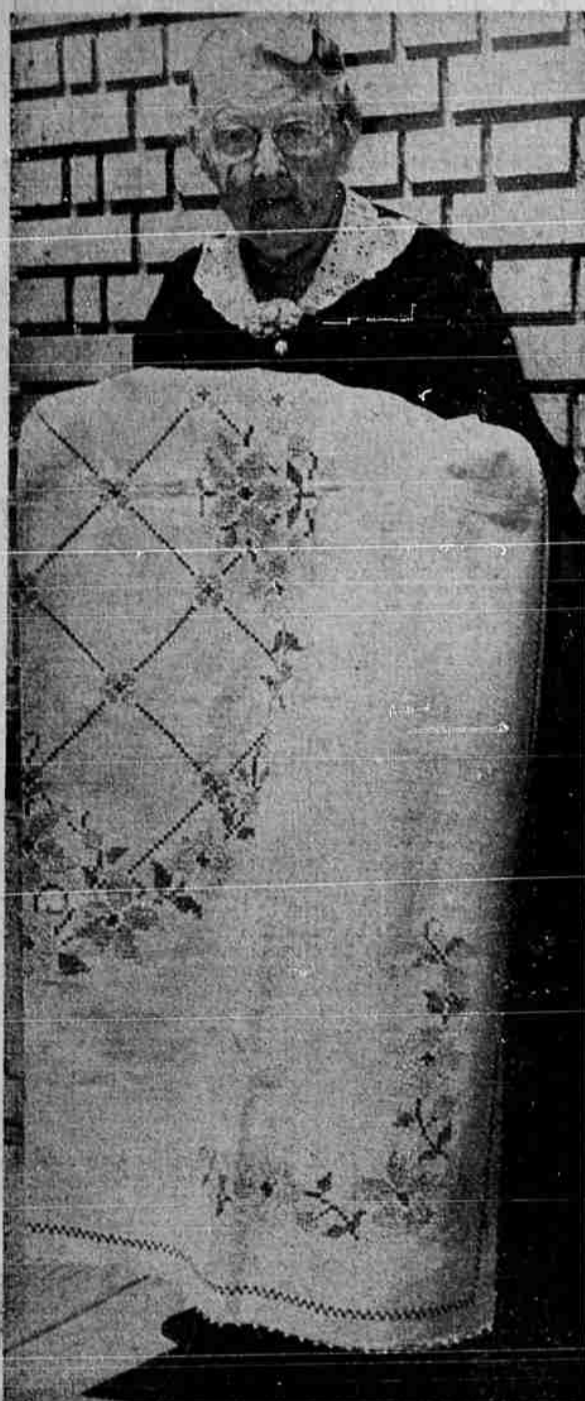


Picture News of the Week



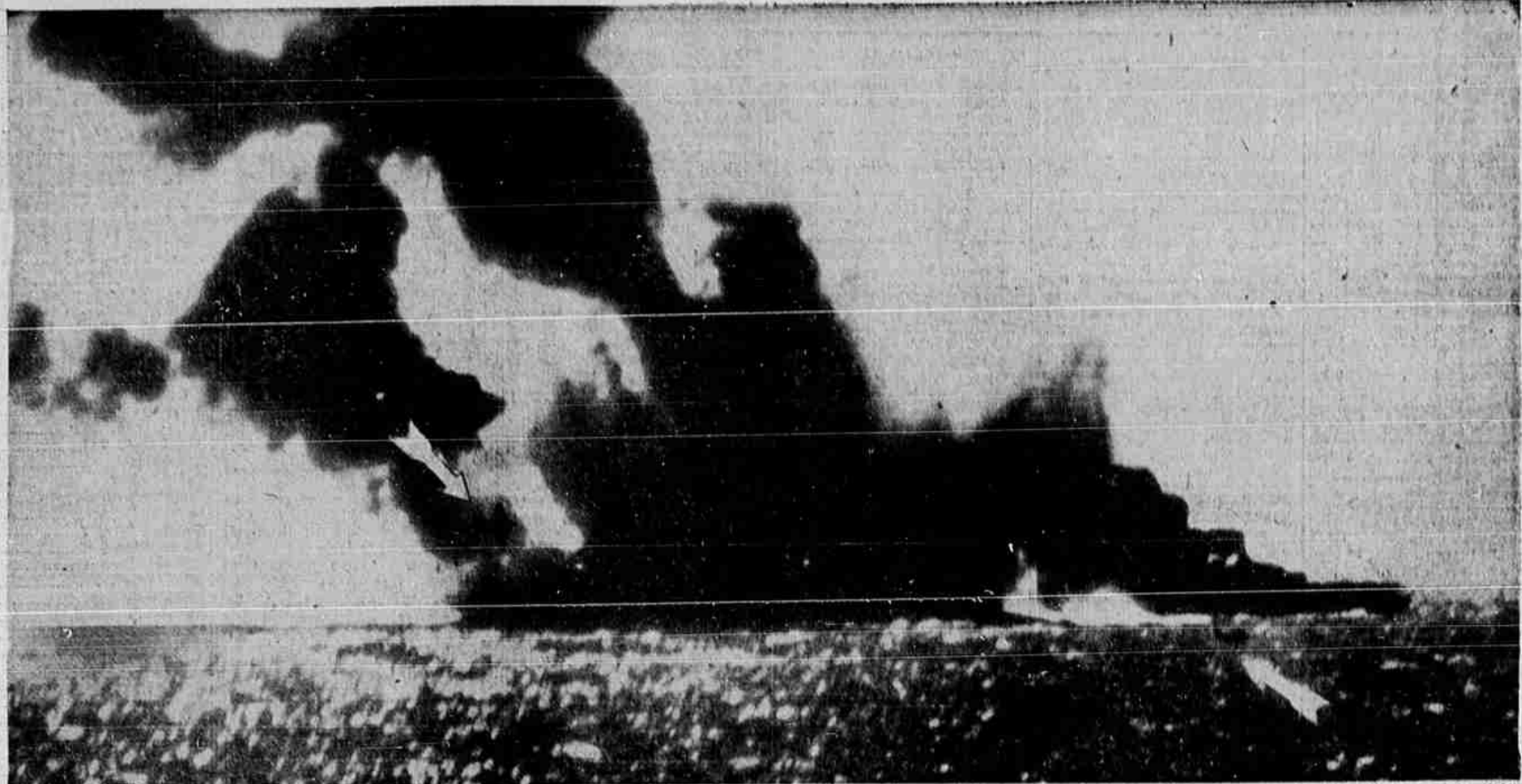
**AIDS RED CROSS**—Mrs. Alice Peatross of Langell valley is over 80, but she has done her bit for the Red Cross. She made this attractive bed cover and sold it for over \$40, which went to the Red Cross. Mrs. Peatross belongs to the Women's club of Langell valley and is the mother of Mrs. Al Gale. She is familiarly known in the Langell valley area as "Grandma."



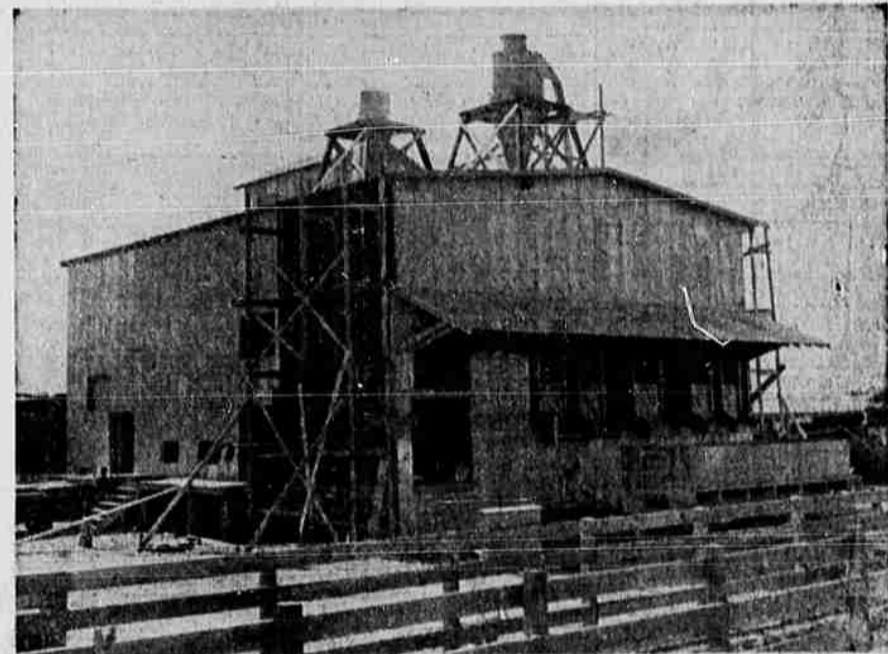
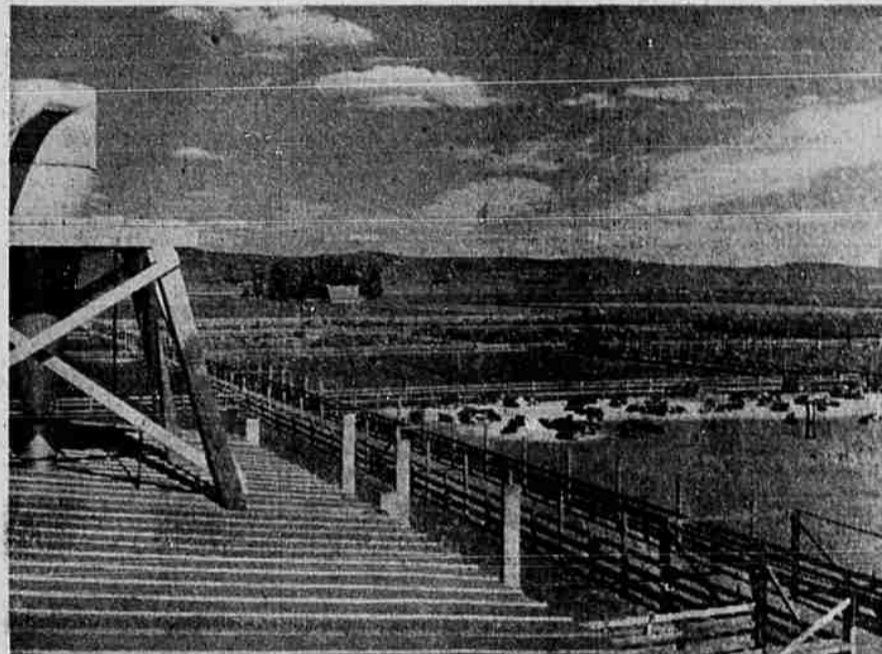
**EAGLES GET \$11,000 BOND**—The Klamath aerie of the Fraternal Order of Eagles has just bought \$11,000 in war savings bonds. Picture shows M. L. Bratton, left, retiring secretary, and I. A. Baker, past president, with the bond.



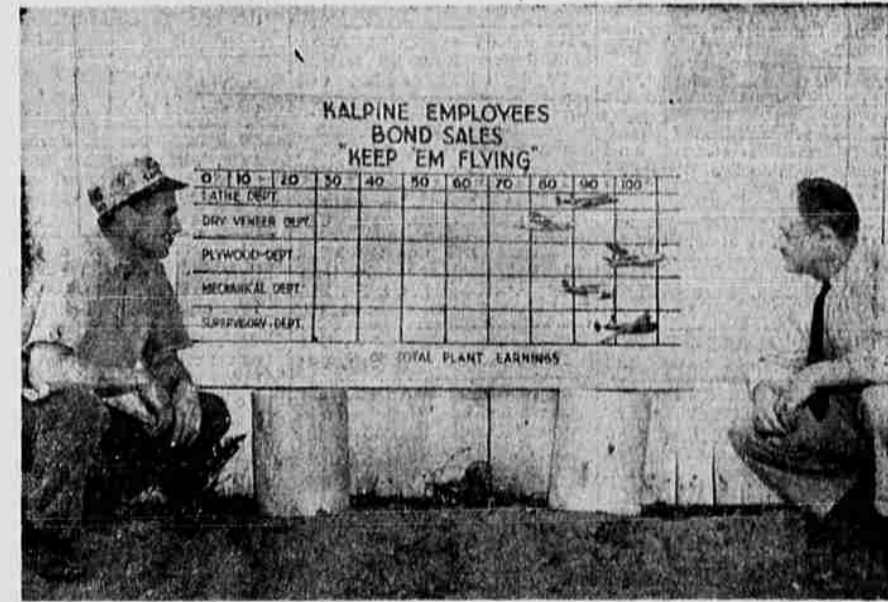
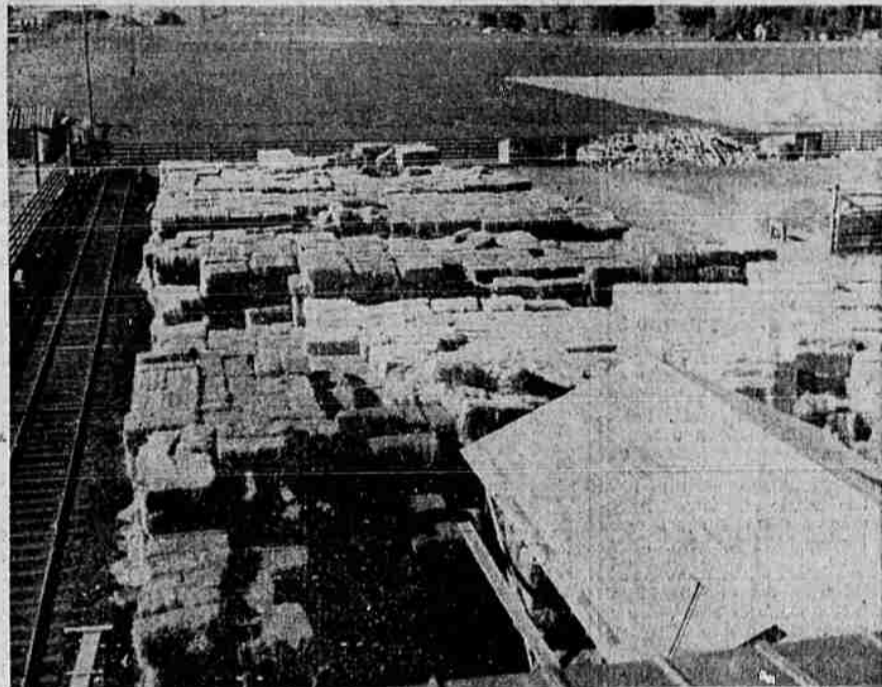
**FATALITY**—Andrew Hemerich, Merrill farmer, was killed instantly Monday at noon when he drove his truck over the Wocus grade crossing and directly in the path of a Southern Pacific passenger train. The truck was thrown to one side and down the incline. Hemerich was removed from the cab as was his slightly injured companion, John Bruce, Merrill.



**DEATH OF JAPANESE AIRCRAFT CARRIER**—This remarkable picture shows the Japanese aircraft carrier Ryukaka burning furiously, shortly before she sank in the Coral sea battle as a result of bombing and torpedoing by United States planes. (Official U. S. navy photograph from Associated Press).



**MALIN GETS NEW INDUSTRY**—Malin has a busy new industry, the huge feeding yards and mill of the Malin Feed company, which this week received the first cattle to be fattened for market. The yards, on the Great Northern railway, have a capacity of 4000 head of cattle, and cover approximately 20 acres. Most of the cattle will be shipped into Malin from the south, fattened on hay and grain, and shipped to Seattle markets. The picture above shows the feed mill which includes grain grinder, hay chopper and storage for grain. Pictures at left show the feed yards, covering 20 acres, and hay piled up in the yard. Max Jacobson is manager of the firm, which has Seattle connections.



**KALPINE BOND CHART**—Unique among the lumber company war bond buying charts is this one at Kalpine Plywood plant on Klamath river, where airplane cut-outs are used to show how each department stands in payroll deduction percentage for bond buying. Men in the picture are L. D. McClane, head sanderman, in cap, and Dan Farris, of the office staff.



**APPOINTED**—Major L. Boyd Yaden, former material officer at Hamilton Field, this week assumed the post of executive officer of the base, succeeding Colonel J. W. Warren, who was transferred. Yaden has been connected with Hammer Field since April, 1941, and in active service for several months prior to coming here. He is a former resident of Klamath Falls, and a graduate of the University of Oregon. He is a licensed civil engineer and was a member of the army reserve. Before being called into active service he spent several years in the employ of the department of the interior and was engaged in construction work in Alaska. Yaden is the son of Mrs. G. H. Hancock, 701 Pacific Terrace.



**BIG LAWN PICNIC**—A teeter-totter attracted an older group at the Thursday picnic enjoyed by St. Paul's Episcopal summer church school attendants on the Conger avenue Big Lawn at the H. P. Bosworth home.