

Blackout Signal

One 5-minute blast on sirens and whistles is the signal for a blackout in Klamath Falls. Another long blast, during a blackout, is a signal for all-clear. In precautionary periods, watch your street lights.

The Evening Herald

ASSOCIATED PRESS

IN THE SHASTA-CASCADE WONDERLAND

UNITED PRESS

PRICE FIVE CENTS

KLAMATH FALLS, OREGON, TUESDAY, APRIL 21, 1942

Number 9467

Weather News

Table with precipitation data for April 13, 1942, comparing present stream year, last year to date, and normal to that date.

JAP PEACE OFFENSIVE FORESEEN

U. S. Joining R. A. F.

In The Day's News

By FRANK JENKINS
LONDON reports today that Churchill has approved a plan to link Britain's army, navy and air force into a single gigantic COMBAT team.

ALSO from London comes the statement that U. S. warplanes are being ferried to British operational bases to join the RAF.

The London Daily Sketch says: "Soon at airbases all over Britain will be gathered the force of planes that will make this country the world's greatest air base."

THIS is the point: Hitler is being told (with the aid of a brass band) to look out for an assault on his back door whenever he gets into it up to his neck with the Russians at the front door.

THE Germans are reported from Holland to be building a bicycle army in northern France and Belgium, having taken over the entire output of bicycle factories in these regions.

(THE Germans, not knowing where the invasion blow might fall, must be prepared to shift their forces swiftly. If they are falling back on bicycles, it is a sign they are not so flush with trucks.)

REALIZING that they are being attacked on the propaganda front, the German propagandists are hitting back.

The Berlin radio today says two million tons of shipping have been sunk by axis submarines off the American Atlantic and Pacific coasts in the last three months.

THE submarine menace to allied shipping is too grave to be ignored, but the Berlin radio is laying it on pretty thick with its claim of 2,000,000 tons in three months.

One of its propaganda purposes is to cause Americans to lose confidence in the reports of their own government, which are extremely secretive.

THE Chinese today say the Japs are speeding preparations for possible war against Russia, heavily reinforcing their garrisons in Inner Mongolia, which borders Siberia.

ONE of the safest guesses in the world is that Hitler is in (Continued on Page Two)

Mud Hampers War Efforts On Red Front

KUIBYSHEV, April 21 (AP)—With the front a morass of mud and slush, the big armies on Russia's western front continued their occasionally fierce but essentially local operations today without any material change of positions.

Most significant factor in the general situation was the Russian-reported statement of a German captive, a Major Bittner of the 900th transport group, who pointed out that an American-British threat is hanging over the German high command in the west and that hopes are not bright among German officers for a big spring offensive.

Eugene Varga, director of the international institute of economics and politics, declared in Pravda that the main force of the German army no longer is youth but reservists over 30 with families, an assertion that is borne out by the prisoners which foreign correspondents have seen.

GOP SEEKS WORLD ACCORD AFTER WAR

Taft Criticizes Plan As Hasty at First Committee Meet

CHICAGO, April 21 (AP)—The republican national committee feels the United States is obliged to help bring about "an understanding, comity and cooperation" among nations of the post-war world, a stand Wendell L. Willkie characterized as an "abandonment of isolationism."

Senator Robert A. Taft of Ohio, however, said he thought it "a great mistake" for the committee to have expressed any policy on post-war action as it did last night at its first meeting since the nation went to war.

Other leaders, including Joseph W. Martin, Jr., committee chairman, and Clarence Budington Kelland, committee executive director, expressed approval of the committee's work which included a demand for relentless prosecution of an offensive war for peace with victory.

Willkie, 1940 presidential nominee, said republicans should see to it that in the forthcoming primaries candidates who will (Continued on Page Two)

Russia Nursing Delicate Relations With Japanese

By EDDY GILMORE
KUIBYSHEV, Russia, April 21 (AP)—No nothouse plant in all of Russia is being nurtured more tenderly this spring than the delicate question of the soviet's relations with Japan.

The newspapers do a beautiful job of factual reporting in their account of the Pacific war they never indulge in so much as an editorial comma, despite the fact that they devote column-length articles to the subject.

Twice papers have spoken out. Both carried warnings to the Japanese militarists to be careful of their northward ambitions while plunging on in the Pacific.

The new Japanese ambassador, Naotake Sato, is one of the most active diplomats in Russia. When he arrived to replace Lieut. Gen. Yoshitsuga Takaewa, he let it be known that his

AERIAL UNITS FERRYING TO ATTACK NAZIS

German Nervousness Over Coastline Raids Grow

By The Associated Press
United States warplanes, now blasting the axis on many fronts, are already being ferried to British operational bases to join in the RAF's great aerial offensive against the continent, London sources reported today.

Meanwhile, signs multiplied of German nervousness over a possible allied invasion of Nazi-dominated Europe.

Norwegian advices reaching London reported several more German divisions had arrived in Norway as a precaution "against possible allied invasion," and that the Germans were barricading the coast with concrete strongpoints and masses of barbed wire.

Dutchmen escaping from Holland said the Germans were taking the entire production of bicycle factories in the low countries and Denmark to withdraw from two positions in the province of Antwerp on the west coast of the island of Panay, the war department reported today.

The heavy bombardment of the island ferries in Manila bay by 240 millimeter guns on both shores of the bay lessened late yesterday, the communication said, and the damage inflicted was "not great."

In dive bomber attacks on Fort Hughes, near Corregidor, and Fort Drum, close to the Cavite shore, most of the bombs dropped harmlessly in the water, and no damage or casualties were reported on either island.

U. S. ARMY HEADQUARTERS IN AUSTRALIA, April 21 (AP)—Gen. Douglas MacArthur (Continued on Page Two)

FBI Celebrates Hitler's Birthday

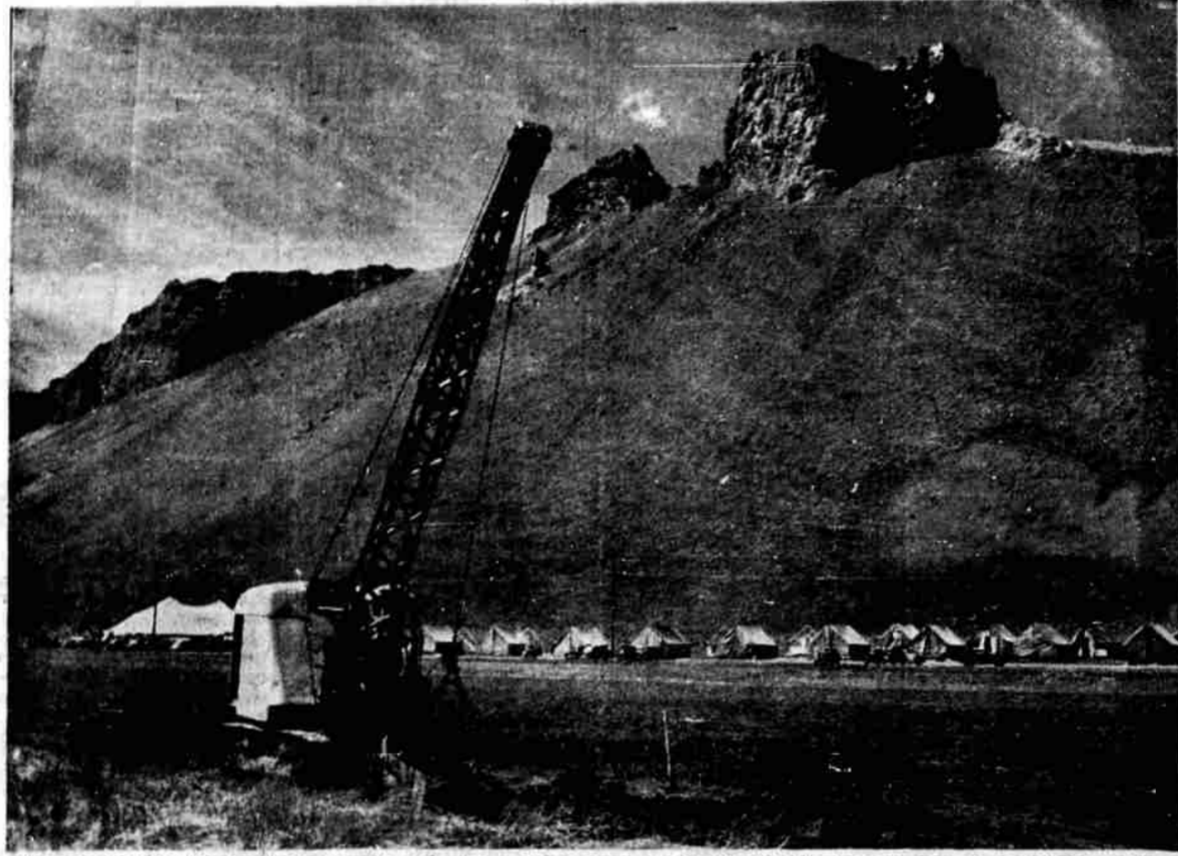
NEWARK, N. J., April 21 (AP)—E. W. Conroy, New Jersey head of the federal bureau of investigation, said today the FBI celebrated Adolf Hitler's 53rd birthday with the largest state-wide raid since Pearl Harbor, arresting a score of enemy aliens, questioning more than 100 persons and seizing much contraband.

More than 150 agents and local police struck at 62 places last night, Conroy said.

WAR QUIZ

Answers on Page 4
1. This insignia is a dead give-away. It plainly shows the wearer belongs to a parachute outfit. But which—army, navy or marine?
2. Robert Gordon Menzies, a former prime minister in one British commonwealth of nations, warned the United States might lose the war. Is he English, Canadian, South African, New Zealand or Australian?
3. A returned American sailor described Murmansk as a battered, but busy port. Do you know where it is?

Jap Camp in Picturesque Setting



The rugged Tule lake peninsula forms a picturesque background for this picture showing the start of construction work on the Japanese settlement camp and reception center near Tulelake, 30 miles south of here.

U. S. FORCES LOSE GROUND ON PANAY

First Communique in New Job Issued by MacArthur

WASHINGTON, April 21 (AP)—Heavy enemy attacks have forced the American-Filipino defenders to withdraw from two positions in the province of Antigua on the west coast of the island of Panay, the war department reported today.

The island ferries in Manila bay by 240 millimeter guns on both shores of the bay lessened late yesterday, the communication said, and the damage inflicted was "not great."

In dive bomber attacks on Fort Hughes, near Corregidor, and Fort Drum, close to the Cavite shore, most of the bombs dropped harmlessly in the water, and no damage or casualties were reported on either island.

U. S. ARMY HEADQUARTERS IN AUSTRALIA, April 21 (AP)—Gen. Douglas MacArthur (Continued on Page Two)

Jap Camp Moved to New Location; Crops Not to Be Disrupted This Year

The Tulelake Japanese camp site was shifted a mile northeast Tuesday morning, when soil and drainage conditions on the original grounds were found unsatisfactory.

Shift to the new location was accomplished almost without loss of construction stride. Buildings already started on the old site will be used as temporary quarters for construction workers.

The new site lies opposite the end of the peninsula, adjoining the east side of the highway. It is on a government lease now held by Liskey brothers, the land being described by the reclamation bureau as "cheap pasture."

While no crop disruption was feared, it was stated by bureau officials they had been informed there will be no disruption of regular agricultural activity in the Tule lake basin this year through the location of the camp there.

B. E. Hayden, reclamation superintendent, said that farmers in that area will go ahead with their crops as usual. He added that it will probably be too late for an agricultural program in connection with the camp by the time evacuees are actually moved into the area.

The new site is on "gravelly" ground, it was stated, and should be more satisfactory. It is about seven miles south of Tulelake, adjoining the Klamath Falls-Reno highway, and it includes about 800 acres.

Hiring of men for the construction program proceeded at full speed Tuesday, with activity centered at the AFL hiring headquarters at Tulelake.

Laborers, carpenters, welders and particularly mechanics with tools are wanted, it was stated at the Labor temple here. Interested men should apply at Tulelake, it was said.

Well drilling will continue on the original site. Water will be piped under the highway and the Southern Pacific railroad line to the new site. G. C. Tatman of the Culinary Alliance late Tuesday reported (Continued on Page Two)

FIERCE FIGHTING RAGES IN BURMA

Chinese Report 7000 British Rescued In Oil Center

LONDON, April 21 (AP)—A furious battle is raging around Yenangaung, in the center of Burma's ruined oil fields, as British tanks and infantry and a Chinese rifle regiment seek to annihilate isolated Japanese troops, a military commentator said today.

CHUNGKING, April 21 (AP)—Chinese forces which recaptured the oil center of Yenangaung saved 7000 encircled British troops and 100 supply trucks in the first allied victory in Burma, an army spokesman said today.

After rescuing the British, the Chinese fought with their allies under British command and drove three miles south of Yenangaung through the rubble of burned oil wells to which the torch had been applied.

Severe fighting with the Japanese still is in progress, the spokesman said. The Chinese, commanded by U. S. Lieut. Gen. Joseph W. Stilwell, moved into the British sector at the request of their allies' high command, the spokesman added. One Chinese battalion commander was killed leading his troops in the recapture of Yenangaung.

Prayers are being said daily for an early conclusion of the war and restoration of peace throughout the world.

Burning Railroad Bridge Collapses Under Box Cars

THE DALLES, Ore., April 21 (AP)—A burning railroad bridge gave way beneath a freight train near here yesterday, dumping a locomotive tender and ten box cars into a gully.

Two trainmen were injured, neither seriously. Lawrence Moore, brakeman, jumped and fractured an ankle. Glenn Baker, engineer, was cut and bruised. Both are from Wishram, Wash.

The bridge caved in just after the locomotive passed over the gully, 13 miles south of here on the Spokane, Portland & Seattle company branch line to Bend. Cause of the fire was undetermined.

Baseball AMERICAN LEAGUE

Table showing American League baseball scores for New York, Philadelphia, Ruffing and Rosar, Wolfe Christopher (4), and Wagner.

NATIONAL LEAGUE

Table showing National League baseball scores for Boston, Brooklyn, Javery, Errickson (1), Hutchings (2), and Klutz; Head and Sullivan.

Table showing National League baseball scores for Chicago, Pittsburgh, Bithorn, Schmitz (5), and McCullough; Sewell and Phelps.

Schools Considering Plan To Coordinate Athletics

Drastic reorganization of the physical education, health and athletic program of both elementary and high school systems in the city was under advisement of Klamath Union high school district board and the board of district No. 1 which met Monday night to outline policies to be followed during the coming year.

Under the proposed change there will be a coordinator to direct the program of the joint systems with assisting heads in charge of high school and elementary work.

Kenneth Hammer, head KUHS football coach this past year, was recommended for the post of coordinator, with Joe Peak in charge of the high school program and Paul English as head of the elementary system. Superintendent Arnold Grapp offered the following set-up for the approval of the board, Hammer, if selected, would de-

NEW AIR RAID ALARM HEARD, NAZIS REPORT

Tokyo Cabinet Given Details on Raid Made Saturday

By ROGER D. GREENE
Associated Press War Editor
Japan launched an apparent "peace offensive" today as new air-raid alarms were reported to have sounded in central and western Japan and the Japanese cabinet received details on the damage inflicted by American bombers in Saturday's historic assaults on Tokyo, Yokohama, Nagoya and Kobe.

While warning of the propaganda danger, American officials have already discounted such an axis peace drive with the declaration that the Rome-Berlin-Tokyo bloc could not be trusted in a negotiated peace. The new air-raid alarms in Japan were the second since planes with the U. S. insignia spread flaming destruction and terror across a 1,000-mile trail on Saturday.

Coast Faces China
A Berlin broadcast said the alarm sounded in the afternoon and was lifted in central Japan by an all-clear at 5 p. m., Japanese time (1 a. m. PWT).

Japan's west coast faces a China, indicating that the planes may have come from the Chinese mainland. Imperial Tokyo headquarters said yesterday that some of the big U. S. bombers which took part in the raids Saturday had "escaped" to bases in China.

For central Japan, the all clear sounded about 5 p. m., while the alarm remained in force for western Japan, especially for Kyushu, the broadcast said.

Kyushu, one of the four main islands of the Japanese Archipelago, lies nearest to China and is the scene of the great Sasebo naval base, a porting industrial base and the town of Nagasaki. The Berlin broadcast did not say whether any bombs were dropped.

Damage Belittled
In Tokyo, Japanese cabinet ministers belittled the damage inflicted on Saturday's raids, asserting that the transportation system was "hardly disturbed," that the postal service was fully resumed soon after the planes left, and that Japanese life was affected only in a few instances. Signs of a possible Japanese "peace offensive" cropped up in a Tokyo broadcast quoting Toyohiko Kagawa, Japan's best-known Christian leader, as declaring: "Prayers are being said daily for an early conclusion of the war and restoration of peace throughout the world."

Burning Railroad Bridge Collapses Under Box Cars

THE DALLES, Ore., April 21 (AP)—A burning railroad bridge gave way beneath a freight train near here yesterday, dumping a locomotive tender and ten box cars into a gully.

Two trainmen were injured, neither seriously. Lawrence Moore, brakeman, jumped and fractured an ankle. Glenn Baker, engineer, was cut and bruised. Both are from Wishram, Wash.

The bridge caved in just after the locomotive passed over the gully, 13 miles south of here on the Spokane, Portland & Seattle company branch line to Bend. Cause of the fire was undetermined.

News Index table listing various news sections and their corresponding page numbers.