

# SOVIET HITS JAP THREATS OF INVASION

(Continued from Page One)

tate Russia's position against Germany.

Harry Hopkins, personal adviser to President Roosevelt who is in England with the United States army chief of staff, George C. Marshall, had a long conference today with the Russian ambassador to London, Ivan Maisky, and probably will present the results of the interview in a conference with Prime Minister Churchill.

Marshall, who told reporters last week cryptically of a desire to "expand over here" took no part in the talk with Maisky, held at the United States embassy.

The German air force increased its pace on the Russian front, in support of light counter-attacks by infantry and tanks in a general attempt to feel out the depth of the red army's positions. Warm weather and slush prevailed in the principal fighting areas.

Russian sappers at one point were reported to have diverted the course of a flood from the spring thaw, washing the enemy out of a fortified village. Russians voiced belief that the next offensive would be their own, that the German army would be smashed on Russian soil this year or, if the worst came, that the red army would continue the fight in the Urals or Siberia.

## Fire Damages Sheep Sheds, Corrals on Ranch Near Merrill

MERRILL, April 13 (Special) Fire today damaged the sheep sheds and corrals on the Haskins brothers' ranch on the state line near here.

The blaze spread from a trash fire at noon, and burned in the fences, feed bunks and sheds before it was brought into control by the combined efforts of the Merrill and Tulelake fire departments.

There were no sheep in the sheds or corrals at the time.

Read the Classified page.

## TOO LATE TO CLASSIFY

2-ROOM furnished apt., refrigerator. Light housekeeping room. 405 No. 3rd. 4-18

OIL TO BURN — For Union heating oils phone 8404. Klamath Oil Co., 615 Klamath. 4-30mtf

WILL PAY CASH for 10-inch or 12-inch bench saw with motor. J. W. Copeland Yards. Phone 3197. 4-14

FOR RENT—Furnished 4-room house, walking distance to G. N. roundhouse. 3037 Laverne. 4-16

WHY NOT commence that business course at the Interstate Business College now? 432 Main. 4-13

FOR RENT—4-room unfurnished, modern house. 1703 Wall. 4-13

5 ACRES with 5-room house, \$750. Stewart addition, Rt. 3, Box 517. S. H. Thompson. 4-18

WANTED — Cash for strictly modern new or almost new 2-bedroom home. In restricted district. State description, location and price. Box 4187, Herald-News. 4-15

1935 FORD TUDOR—This car priced to sell. 3038 Cannon. 4-15

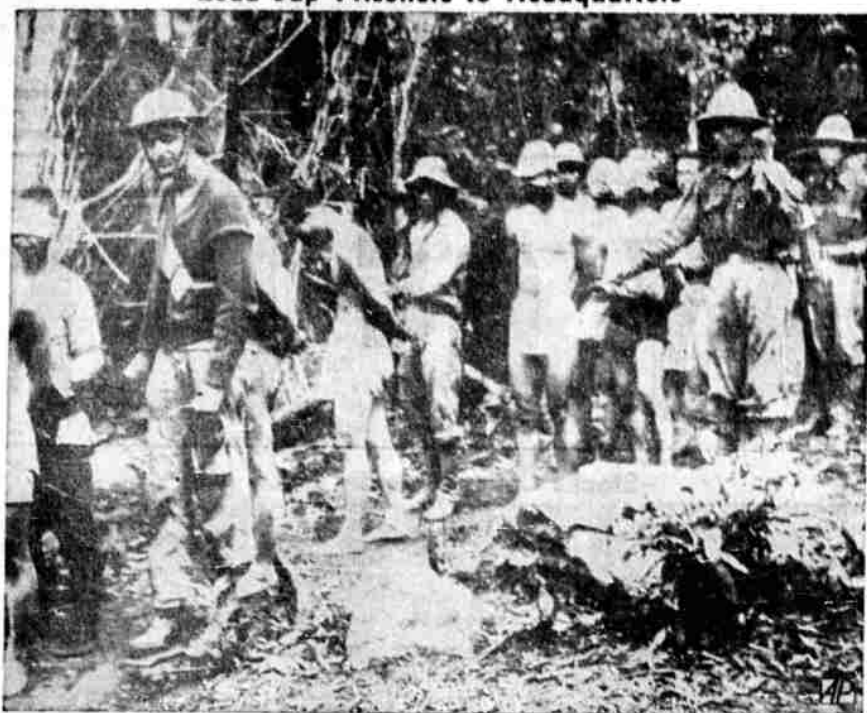
FOR SALE—Two houses on one acre in Altamont. Both rented. Inquire mornings at 3049 Delaware. 4-18

LUDWIG PIANO, fine condition, \$75. \$10 down, \$5.50 monthly. Louis R. Mann, 120 N. 7th. 4-14

100 HEAD STOCK CATTLE for sale. Tim T. Sullivan, State Line, near Hatfield, Calif. 4-18

**2**  
DAYS LEFT TO INSTALL YOUR OIL STOVE OR FURNACE  
PHONE 5149  
**PEYTON & CO.**

## Lead Jap Prisoners to Headquarters



Japanese prisoners are led blindfolded to headquarters of Brig. Gen. Clinton A. Pierce for questioning during days when American and Filipinos were taking prisoners on Bataan. Today many Americans were presumed to be dead or captured in the drive that cracked their defense. This picture was made by Clark Lee, Associated Press reporter, and released by the war department.

## From the Fox Holes of Bataan



Fox holes like these men occupy on the Bataan peninsula gave way before a vastly superior Japanese horde after days of continuous assault, the war department said dispatches from the front indicated. Ducking shrapnel here were (left to right) Captain S. W. Little, Sergeant John G. Graham, Lieutenant P. W. Frutiger and Corporal R. L. Carter.—(U. S. Army Signal Corps photo).

## JAPS MOVE NEARER BURMA OIL FIELDS

(Continued from Page One)

simo Chiang Kai-shek's stalwart fighters were standing their ground along the Sittang river, 30 miles north of Toungoo, in the face of a Japanese attack supported by planes and concentrated artillery fire.

The generalissimo, it was disclosed, has returned to his capital after spending four days at the Burma front conferring with United States Lieutenant General Joseph W. Stilwell, who commands the Chinese in Burma, and General Harold Alexander, the British commander.

NEW DELHI, India, April 13 (UP)—A triple assault by reinforced and mechanized Japanese columns gravely imperiled Chinese troops defending the approaches to Mandalay today while another enemy invasion force stabbed at the gateway to western Burma's oil fields, less

than 200 miles southeast of the Indian frontier.

A Chungking communique disclosed units of China's fifth and sixth armies on the eastern flank had inflicted 2000 casualties on superior Japanese troops pushing northwestward from captured Toungoo, but it admitted that the enemy had advanced more than 18 miles beyond that key city.

Severe fighting, the communique said, was raging Thursday northwest of Yedasho on the Toungoo-Mandalay railroad. Another enemy advance was reported along the Sittang river, east of the railroad, and a third enemy force was said to have moved westward from Thailand in an attempt to capture Mawchi, center of Burma's tin mine area about 35 miles east of Toungoo.

The Chungking communique, admitting a critical situation on the Toungoo front, followed official reports Japanese motorized spearheads had reached a point 60 miles north of captured Prome in the Irrawaddy valley.

Writers Group—Members of the Writers group will meet Thursday at 2 p. m. with Mrs. A. E. Stonehouse, 511 Eldorado, Kenoffel apartments.

## Radio Day by Day

By C. E. CUTTERFIELD

Pacific War Time

NEW YORK, April 13 (Wide World)—Replacing the usual broadcast of the radio forum at 8 tonight, the BLU will switch to Mexico City for ceremonies at the opening of the Benjamin Franklin library. Speakers include President Avila Chamacho of Mexico and U. S. Ambassador George Messersmith.

NBC 3:30 p. m. Pan-American day program from Rio de Janeiro, Orson Welles and Chancellor Oswald Arahana. (The list of war broadcasts, effective today, is being omitted inasmuch as the schedule, shows little change from day to day. Important changes will be noted when they occur.)

## Editorials on News

(Continued from Page One)

to induce us to send all possible help to Russia.

THE Russians today speak sharply to the Japs, warning them on the first anniversary of the Russian-Japanese neutrality, to "live up to all the ramifications of that agreement."

Pravda, newspaper organ of the Communist party, says: "It is necessary that the Japanese military and fascist cliques who are dizzy with military success should understand that their blabbering about war and invasion IN THE NORTH might damage first of all and most of all JAPAN herself."

Siberia is NORTH of Japan. THAT is about as strong a hint as can be given that if the Japs tackle Siberia Russia will bombard Japan from Vladivostok.

The Australian Dingo, or native dog, does not bark, but howls mournfully in the night.

**HURRY!**  
DOWN TO OUR NEW LOUNGE  
• Refreshments • Mixers  
**MOLATORE'S**

## 14 FLIERS KILLED IN DOUBLE CRASH

(Continued from Page One)

meda, Calif. James M. Wagner, machinist mate, Alameda.

Henry T. Morgan, machinist mate, Point Washington, Fla. Roscoe E. Rambo, radioman, Alameda.

Robert A. Frank, radioman, Burbank, Calif. Olliff P. Flynt, chief machinist mate, Pelham, Ga.

Plane No. 2: Lieut. Commander Loren A. Morris, Oakland, Calif. Charles J. Herriot, radioman, Warland, Wyo.

Algie Belcher, machinist mate, San Francisco. Robert W. Hastings, radioman, Fresno, Calif.

Benjamin F. Johnson, radioman, Globe, Ariz. The navy withheld the names of the other two dead, one man from each plane, until the next of kin could be notified.

The sole survivor was Earl P. Patrick, 29, aviation machinist's mate, 1st class. He was flung clear when plane No. 2 struck, and was found walking about dazedly, but suffering only from cuts and bruises, by rescue crews reaching the scene.

Plane No. 1 carried eight men to their deaths when it struck a fence and plowed up a furrow on a cattle ranch 10 miles outside of Livermore.

Plane No. 2 crashed near the top of a hill some three miles away from the scene of the other crash-up. Witnesses said the ship missed clearing the hill by only 20 feet. The plane dug a furrow 60 feet long and burst explosively into flames.

The planes were equipped with retractable landing gear and could come down on land as well as water.

## Oregon AFL Plays Few Vote Favorites

PORTLAND, April 13 (AP)—The Oregon AFL executive board played few favorites Saturday in passing out a liberal amount of recommendations for political candidates.

Both republican candidates for governor, Secretary of State Snell and Governor Sprague, were endorsed. State Senator Lew Wallace alone drew recommendation for the democratic nomination.

U. S. Senator McNary was endorsed for reelection, but another republican, Arthur M. Geary, was lauded.

8-Hour Photo Service — Comart.

Your Greatest Show Bargain!  
**25 TOWER**  
PHONE SALES  
25¢ PER COPY  
DOORS OPEN AT 6:30 P. M.

**ENDS TONIGHT!**  
★  
**BENNY**  
Dorothy LAMOUR  
Betty GRABLE  
ROCHESTER  
in  
"MAN ABOUT TOWN"  
— and —  
Thrilling! Daring! True!  
"THE WORLD IN FLAMES"

**TUESDAY and WEDNESDAY ONLY!**

What Fun! Claudette prays for a fairy god-mother — and hits the jackpot!

Claudette COLBERT

**DON AMECHE**  
in  
"MIDNIGHT"

— and —  
**ANN SHERIDAN**  
Margaret LINDSAY

Maria WILSON  
3 main item made — out for no good!

in  
**"BROADWAY MUSKETEERS"**

## California or Butts!



Bert C. Anderson and his two-goat power trailer looked like this when he arrived in San Diego, Calif., after 1700-mile trip from South Dakota. After looking the town over, he plans to drive back in his gasless wartime vehicle.

## PRESIDENT WORKS AGAINST INFLATION

(Continued from Page One)

general plan against inflation, although he said it had not yet Jelled.

Behind-the-scenes conferences have been in progress, and more were likely this week, in an effort to bring administration officials concerned with the inflation danger into unanimity of opinion on combative steps before laying them before the congress or the public.

The United States, during the first nine months of 1940, imported 5,587,863 pounds of oil.

## Reynolds Director in State Group

PORTLAND, April 13 (AP)—The Oregon Commercial Secretaries association Saturday elected Arthur J. Farmer, manager of the Portland chamber of commerce, as president.

Frank Hull, Medford, was named vice president; Dean Peiper, Ashland, secretary-treasurer; and James Baker, Marshfield; Fred Brenne, Eugene; Carl Curlee, Albany; Don Peoples, Bend; Earl Reynolds, Klamath Falls, and Ralph Buynes, Oregon City, directors.

Fire Alarm—The city fire department was called to 1021 California avenue at 11:30 a. m. Monday when a flue fire was reported in progress at the Philip Detroit home. There was no damage.

## AIR ATTACKS KEPT HIGH BY DEFENSE GUNS

(Continued from Page One)

men and one passenger were rescued by Dutch planes, some being flown to Soerabaja, and others to Bali.

The Meigs was sunk February 19 in a bombing raid on the harbor of Darwin, Australia. The master, Captain F. S. Link, was injured. One crew member was killed and eight were wounded.

Ten raids were made on Corregidor in the past twenty-four hours, the war department said, raising the total to 22 in the last two days.

The communique said there were some casualties but military installations sustained only minor damage.

## Strike Ends at Door Factory

TACOMA, April 13 (AP)—The big Northwest Door company plant reopened today upon settlement of a strike which closed the plant four days ago and left about 550 workers idle. The AFL-Lumber and Sawmill Workers union announced its members had voted to accept a settlement arranged in a conference between the union and employers. Neither side would comment on the cause of the strike nor on what terms the controversy was settled.

**FOR RENT TRUCKS and BICYCLES**  
You Drive — Move Yourself  
Save 1/4—Long and Short Trips.  
**STILES' BEACON SERVICE**  
Phone 8304 1201 East Main

**ESQUIRE**  
SEE IT TONIGHT!  
Doors Open 1:30 and 6:30 P. M.

At last it's on the Screen!  
BIGGER! BETTER! FUNNIER! CRAZIER!  
GREATER THAN THE STAGE SHOW!

**HELLZAPOPPIN'**  
Starring **OLSEN and JOHNSON**

—Added Joy—  
"Porky's Cafe"  
Looneytoon Cartoon  
"Don't Talk"  
M-G-M  
Special Feature  
Latest News of the World

with **MARTHA RAYE**  
HUGH HERBERT MISCHA AUER  
JANE FRAZEE ROBERT PAIGE  
30 CONGROOS