

# Picture News of the Week



**DISTINGUISHED VISITOR**—Max Singer, of Boston, national commander-in-chief of the Veterans of Foreign Wars of the United States, was entertained at a banquet here Thursday night by the local VFW post. Commander Singer, seated left above, was accompanied by Louis E. Starr (standing), state commander. The third man is James Souther of Klamath Falls, 1942 department encampment president who served as aide to the commander-in-chief during his Oregon visit. Commander Singer spoke on the veterans' part in the war program.



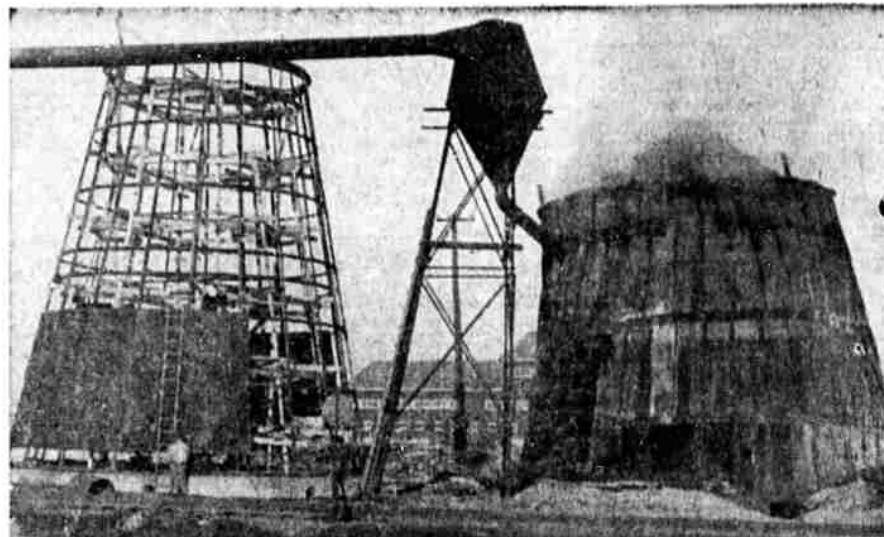
**SEE NEWSPAPER MADE**—Klamath union high school girls from commercial classes are shown in the news room at the plant of The News and Herald. They had been looking at the teletype in the cabinet in the background, but just as the picture was taken they were watching the unusual typing technique of Sports Editor Bob Leonard, right. The man with his back to the camera is News Editor Art Bremer.



**FRENCH POSTER DISPLAYED HERE**—This poster was brought from France by Colonel S. O. Johnson of Berkeley, Calif., who was in charge of American-operated sawmills in the advance zone in France in the World war. The poster was put out in 1920 by the Bank of Alsace-Lorraine to popularize a post-war reconstruction loan for devastated area. The job was done but the Germans overran the same country 20 years later.



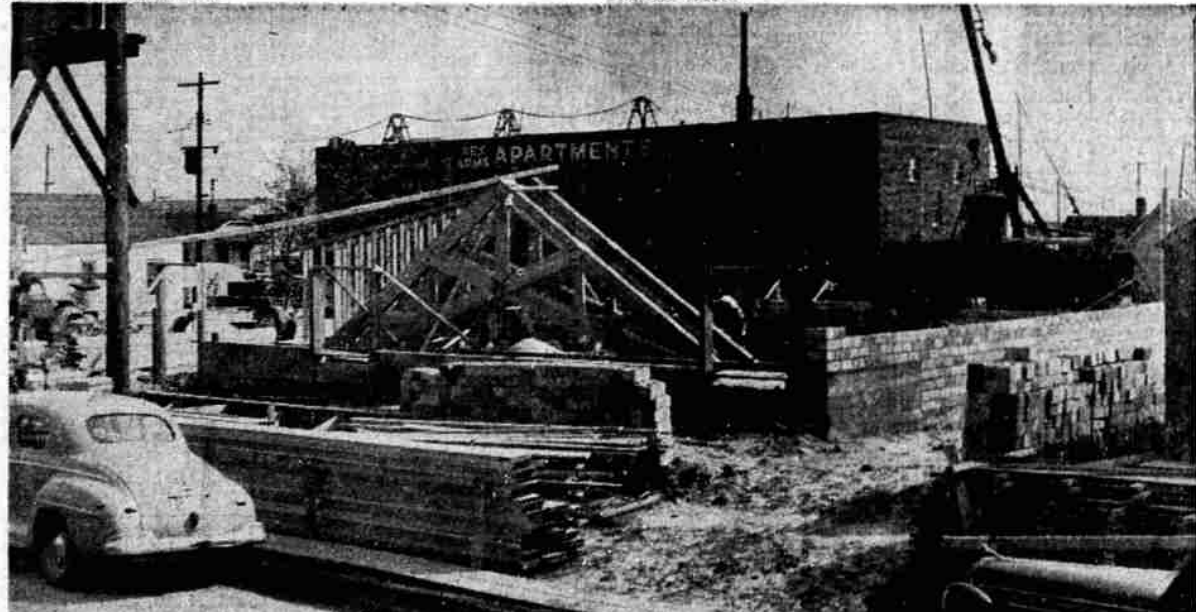
**OREGON GRADUATES RECEIVE INDUSTRIAL TRAINING**—Douglas Marsden (left), of Condon Ore., and George Stephenson, Lakeview, examine training schedule of Westinghouse Electric & Manufacturing company's graduate student course. Both are members of the course which combines practical work, expert instruction and careful guidance and was originated by Westinghouse 50 years ago to help its new college graduate employes bridge the gap between academic work and actual production work.



**LONG-BELL BURNER**—This picture shows at left the new Long-Bell burner along the highway at Dorris when it was under construction. The burner is now finished and is in use. It was brought to Dorris from Seattle.



**PROMOTED**—Claude W. Summers, graduate of Klamath Union high school and son of Mrs. Eva Hooper of this city, is now stationed at Wilmington, N. C. He has recently been promoted to corporal in the United States air corps, 20th Pursuit Group, AFCC.



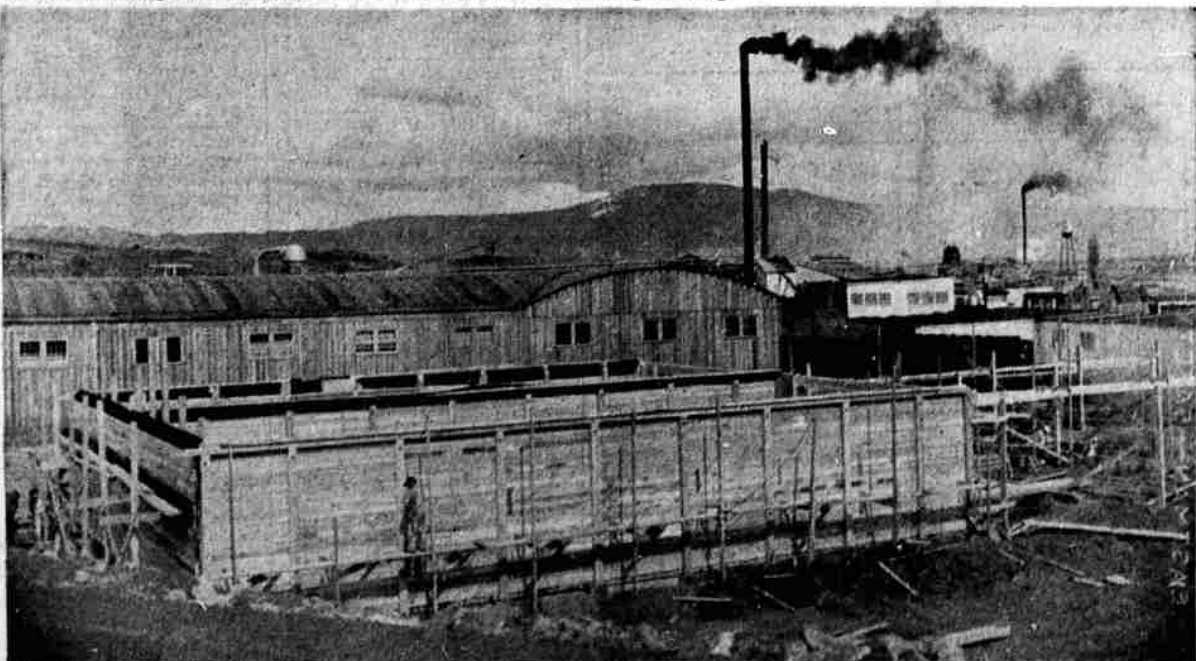
**CHEESE FACTORY BUILDING HERE**—Picture shows the start of construction of the \$25,000 cheese factory of the Klamath Falls creamery, on Klamath avenue at the rear of the creamery building.



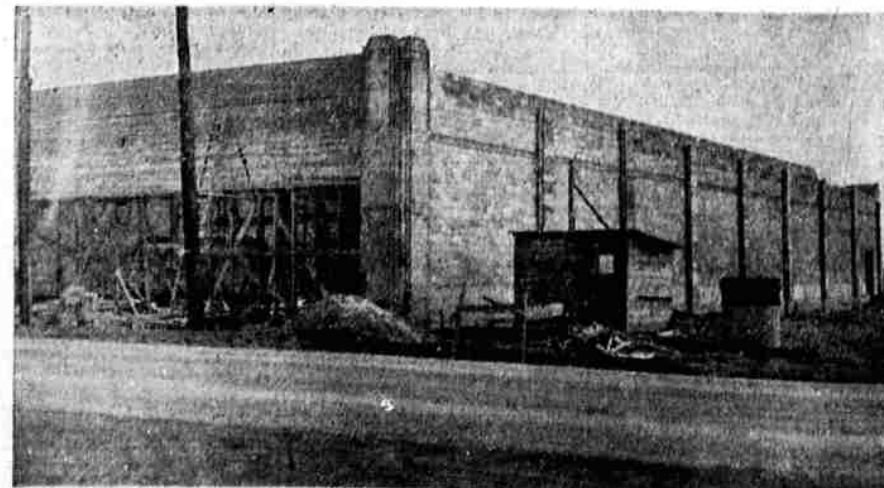
**STREET CONSTRUCTION JOB**—Klamath avenue scene shows construction of new storm sewers for which Klamath people voted millage year or two ago. WPA is helping on the job.



**COACH ENLISTS**—Carl S. White, Bonanza high school basketball and football coach, leaves this weekend for service with the navy. He piloted the Antlers into the Klamath County B league basketball championship this year in his first season as Bonanza mentor.



**EXPANSION**—The Conifer Lumber company, Klamath's newest mill, this week was in the midst of an enlargement program with the construction of a number of new dry kilns. The moulding plant, located on the Great Northern spur near the Klamath river bridge south of the city, has been in operation here for less than two years. The enlargement will not involve the employment of any more labor.



**SOUTH SIXTH CONSTRUCTION**—Picture shows the Safeway store under construction on South Sixth street.