

# 100 WOMEN IN CANTEEN CLASS HERE THURSDAY

Klamath women turned out a hundred strong Thursday evening to begin training for disaster canteen service and nutrition experts. The two courses in food-in-an-emergency work are being conducted by the Red Cross.

The disaster canteen course will be taught by Mrs. Robert C. Hart, and has been divided into an afternoon and an evening class. Twenty women registered for the Wednesday afternoon class from 2 to 4 at the Roosevelt school, and 36 registered for the Thursday evening division to meet at the Fremont school from 7:30 to 9:30. The course will last for five weeks, and completion of the work given will qualify women as canteen aides, subject to call in case of any disaster requiring emergency feeding of the population.

On completion of the 10-hour beginning canteen course, women may take an additional 10 hours and the 20-hour nutrition course to qualify as experts in emergency feeding.

The nutrition course, which will meet Tuesday afternoons at 2 and Wednesday evenings at 7:30 in the Fremont school, will be taught by Mrs. Robert Ellingson and Mrs. Douglas Puckett. Forty "students" are listed in the course so far.

### SHOWS HIS TRUE COLORS

CINCINNATI (AP)—No more side remarks, please, about the Nazi ancestry of Mrs. Joy Hardin's pet dachshund, "Hansi." "Hansi" is wearing a blanket. Embroidered thereon are the words "I Am An American."

### LESS GAS

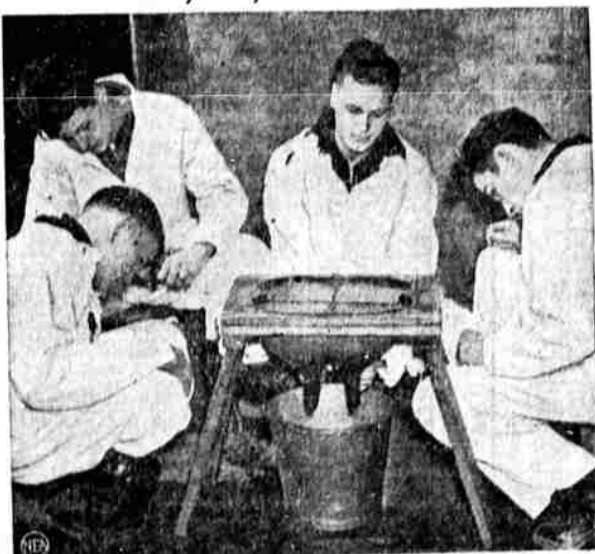
The addition of tetraethyl lead to gasoline cuts the amount of fuel used in a big plane on a trans-Atlantic flight by as much as 250 gallons.

A Chicago woman is suing her grocer-husband for divorce. Must be pretty independent to leave a grocer these days.

### Heel Repairing a Specialty

Highest Quality—Fast Service  
**CONNERS SHOE SHOP**  
121 N. 8th St.

## City Boys Learn How



It's stretching things a bit, but this contraption teaches city boys how to milk. New York Children's Aid Society sends lads to farm school near New Hamburg, N. Y., for six-month practical farming course.



If you want to make sure of getting your money's worth out of what you spend for beef, veal or lamb, it will pay you to know the federal meat grades. As surely as the butcher's scales show you how much meat you are getting the purple grade stamp indicates the quality of the meat.

This purple grade stamp vouchers for the fact that the meat has been judged for quality. On a large cut of meat this stamp has the appearance of a narrow, pale purple ribbon. The grade stamp will appear on every retail cut. Also purple, but not to be confused with the grade identification, is the round stamp used in federal meat inspection. This stamp shows that the meat has passed the inspection of other federal experts who examine it for its wholesomeness as food. Both stamps are of harmless vegetable coloring and need not be cut off before cooking.

The homemaker who learns the beef grades and their positions on the quality scale will also know the grades of lamb and veal, because they are identical. In descending order as to their quality, the five grades of beef sold on the butcher's block are—"prime," "choice," "good," "commercial," and "utility."

Ordinarily, butchers will keep on hand only one of these grades. Less than one per cent of all beef produced can meet the requirements of "prime" grade. "Choice," therefore, is the highest grade of beef available for the most discriminating retail trade. Choice meat has a moderately thick covering of white or creamy white fat. The lean meat is bright in appearance, well marbled with fat.

"Commercial" beef has very little, if any excess fat. "Utility" beef has even less fat covering and rarely any fat marbling. This grade of meat is not satisfactory for oven roasting or broiling, but can be used in pot roasts, stews and similar dishes.

This week the nutrition com-

mittee is presenting some recipes using less tender cuts of fresh beef. In the following recipe for Swiss steak it is well to remember that chuck is usually considerably cheaper than rump or round, and yet it makes an excellent Swiss steak.

### Swiss Steak

(5-6 servings)  
2 lbs. beef chuck, rump or round, 2 inches thick.  
1 1/2 teaspoons salt  
1/4 teaspoon pepper  
1 cup flour  
2 tablespoons fat  
1 1/2 cups boiling water, or 1 1/2 cups hot onion tomatoes.  
1/2 medium onion diced (may be omitted.)  
1/2 green pepper chopped fine (may be omitted.)  
1. Wipe meat with damp cloth. Trim thin layer from outer edge and remove bone and any parts with strong odor.  
2. Measure flour, salt and pepper, and mix.  
3. Place meat on board, sprinkle half of flour mixture on one side of meat, then the other, pound the flour in meat, fry brown and simmer in slow oven for 1 1/2 to 2 hours.

## Bowling

### At Klamath Recreation Alley

#### CLASSIC LEAGUE

##### Molitors

Owens	182	165	177	221
Hicks	181	160	184	221
Jernick	191	169	186	248
Ward	161	219	159	333
Marin	234	153	188	219
Handicap	29	29	29	87
Total	991	982	993	3746

##### Webb Kennel

Hackes	180	202	157	370
Schmalz	173	161	172	407
Gardner	168	174	163	399
McDonald	174	163	181	396
Ellis	176	149	181	396
McDonald	174	163	181	396
Handicap	62	62	62	186
Total	917	945	933	2900

##### Watters Insurance

B. Babautel	153	181	174	396
L. Hoff	140	174	150	464
Victory	159	153	181	496
Robinson	182	177	177	536
Watters	182	181	153	476
Handicap	90	90	90	270
Total	877	958	899	2711

##### Dick Readers

Potter	165	175	165	335
Cox	125	178	168	405
Hoson	174	163	181	436
Young	194	162	190	386
Lavank	143	174	209	617
Handicap	65	65	65	195
Total	866	911	941	2855

##### Southwell Accts.

Hess	189	190	168	547
Southwell	187	187	207	581
Klenas	190	229	179	592
Howard	174	181	178	533
Materie	179	189	171	539
Handicap	41	41	41	123
Total	963	978	929	2850

##### Pastaga Grocery

Bellotti, F.	272	205	178	615
Pastaga, L.	177	145	178	499
Bellotti, T.	187	145	192	524
Howard	183	182	165	490
Conte	180	167	175	522
Handicap	34	34	34	102
Total	906	896	904	2740

##### Bonanza Gems

Booth	211	155	176	540
Hess	150	190	203	543
Holmes	160	165	180	505
Haley	177	179	169	525
Handicap	23	23	23	69
Total	711	713	731	2148

### Noisy Grass

Eulalia grass grows aloud. As the new shoots expand in the spring, the old growth snaps and crackles under the strain.

We are enjoying as large a measure of civil liberties as we deserve, and are still free, even in wartime, to fight against their abridgement. — The Rev. John Haynes Holmes, American Civil Liberties Union chairman.

We Filipinos remember Japanese "benevolence" down through the centuries. So we sharpen our knives. — Manuel Buaken, Filipino writer.

Judge Landis earns his salary for dignifying baseball. If the war continues very long the game will get all the dignity it needs from the venerable gents out there pitching.

## SO GOOD! SO INEXPENSIVE!



### Belvita Wines

California  
Fine wines, in distinctive decanters... worthy of a place on your sideboard!

SHERRY PORT TOKAY  
ANGELICA MUSCATEL  
\$1.95 Gal. 60c Qt.

The E. G. LYONS & RAAS COMPANY  
San Francisco, California

## STRICTLY BUSINESS

by McFeatters



Dale McFeatters

## Tournament Sidelights

SALEM, March 13 (AP)—State high school basketball tournament officials feared a combination of tire rationing and Salem's defeat in the first round would reduce attendance. But they were wrong.

Out-of-town fans, particularly those in North Bend and Astoria, forgot all about tire rationing and came to the tournament en masse. And the Salem students are attending in large numbers to boo their bitter rivals, Astoria.

The first two days of the tournament produced few exciting games, not a one going into overtime, and most of them being decided by large margins. McMinnville's 60 points in its opener against Klamath Falls was the biggest score, only five points shy of tying the all-time record set by Eugene against Joseph in the 1922 tournament.

Salem didn't come far from setting a record, either. In scoring 11 points in its opening game against Corvallis, Salem made only six more points than the all-time tournament low for a game.

So far, no player has come even close to the scoring mark of 31 points set in a game in the 1940 meet by Sammy Crowell of North Bend.

And it looks doubtful that any player will come within reach of the tournament scoring record of 80 points set by Leonard Gard, University High of Eugene, in 1938. Gard, training to be an army flier, was killed in a crash in California last week.

Baker doesn't have many of the home town folks here to cheer the Bulldogs, but the local gentry is making up for it. It's all because the Salem fans

would like to see Hank Anderson, 1940 University of Oregon graduate who is coaching Baker for the first year, come through with a title.

Anderson's antics while his team is playing remind the fans of an expectant father waiting outside the maternity ward.

Newsmen can't remember a tournament in which officials called fouls so closely. One press box wag asked: "Are those officials getting paid by the foul?"

### CENSORED

ADA, Okla. (AP)— Sheriff Clyde Kaiser wishes the newspapers wouldn't publish the names of bootleggers arrested in liquor raids in dry Pontotoc county.

"It gives them too much advertising," he complained.

We are engaged in a great democratic experiment—an attempt to settle by peaceful means all disputes between labor and management—to keep men on the production line and off the picket line.—William H. Davis, war labor board chairman.

## Forests Will Be Open This Summer

SALEM, March 13 (AP)—The state forestry department expects to permit hunters and anglers to enter Oregon forests next summer. State Forester N. S. Rogers told a delegation of sportsmen yesterday. The sportsmen said they had feared that all persons might be barred from forests because of fear of sabotage.

### QUEER ANIMAL

The zobo, an animal common in the western part of the Himalaya mountains, is a hybrid between the yak and the humped cattle of India.

"Suspect Vichy Aid to Nazis," says a headline. Maybe the Vichy Vashy policy is really getting Vichious.

### NIGHT COUGHS

due to colds... eased without "doing".  
Rub on **VICKS**  
VAPORUB  
APPROVED BY 2 GENERATIONS

"Find myself working overtime on these RITZ CRACKERS"

You know you're getting the best when you buy Ritz crackers. The tempting goodness and fine quality of Ritz are found in all the 500 varieties of crackers and cookies identified by the red Nabisco seal. Look for it when you buy.

BAKED BY NABISCO - NATIONAL BISCUIT COMPANY

# WHITAKER'S GROCETERIA

Prices Good Friday Through Monday — Special Values — We Reserve the Right to Limit

<b>Tomato Juice</b> Del Rogue, No. 1 Tall Cans 2 for <b>15¢</b>	<b>Oregon Brand MILK</b> Tall Cans 4 for <b>33¢</b>	<b>Fisher's Pancake and Waffle Flour</b> 10-Lb. Sack <b>53¢</b>
<b>Coffee</b> Our Leader Lb. <b>22¢</b>	<b>MIRACLE WHIP</b> 9qt Jar <b>39¢</b>	<b>Meco Brand Corn</b> 303 Cans 3 for <b>27¢</b>
<b>DEVILED MEAT</b> 6 for <b>25¢</b>	<b>S. &amp; W. Cidor VINEGAR</b> 9qt Jar <b>15¢</b>	

FLAVOR LOAF Enriched with Vitamins and Iron **1.79** | **FRANCO-AMERICAN Spaghetti** 3 cans **27¢**

<b>Corn Meal</b> Aunt Jemima 9 lb. sack <b>32¢</b>	<b>APPLES</b> C Grade Newtown Box <b>98¢</b>
<b>Crisco</b> Vegetable Shortening 3 lb. tin <b>69¢</b>	<b>ORANGES</b> Medium Size, Sweet and Juicy 2 Doz. <b>25¢</b>
<b>Sugar</b> White Satin, cloth bag 10 lbs. <b>64¢</b>	<b>GRAPEFRUIT</b> Seedless Arizona Doz. <b>39¢</b>
<b>Dromedary Dates</b> pkg. <b>19¢</b>	<b>CAVAVO</b> Medium Size, Firm, Rippe Each <b>5¢</b>
<b>Parkay</b> Kraft's Oleo-margarine 2 lbs. <b>47¢</b>	<b>LETTUCE</b> Medium Size Solid Heads <b>5¢</b>
<b>Wheat-Alone</b> The Perfect Wheat Cereal <b>18¢</b>	<b>CAULIFLOWER</b> Head <b>10¢</b>
<b>M.J.B. Rice</b> 2 lb. pkg. <b>23¢</b>	<b>FRESH NEW PEAS</b> 3 lbs. <b>25¢</b>
	<b>RADISHES, GREEN ONIONS, TURNIPS, BEETS</b> 3 bunches <b>10¢</b>

KELLOGG'S **Corn Flakes** 3 large pkgs. **19¢** | PORTER'S **Macaroni** Curve Cut 3 lb. pkg. **17¢**

<b>Peanut Butter</b> 2 lb. jar <b>33¢</b>	<b>Ripe Olives</b> Cosmos, med. No. 1 tall can <b>17¢</b>
<b>STEER BEEF ROAST</b> Roids Cuts, Jutay, Tender Lb. <b>24¢</b>	<b>Cocoa</b> Our Mother's 2 lb. tin <b>17¢</b>
<b>SIRLOIN STEAKS</b> Lb. <b>29¢</b>	<b>Preserves</b> Pure Strawberry 2 lb. glass jar <b>41¢</b>
<b>BEEF SHORT RIBS</b> Lb. <b>16¢</b>	<b>Corn</b> Diamond A, Whole Kernel, No. 2's 2 for <b>29¢</b>
<b>PORK CHOPS</b> Lb. <b>31¢</b>	<b>Catsup</b> C.H.B., 14-oz. bottle <b>14¢</b>
<b>CORNER BEEF</b> Lb. <b>15¢</b>	<b>Tomatoes</b> Josephine No. 2 1/2's 2 for <b>25¢</b>
<b>SLICED BACON</b> Morrill's Pride Fresh Dressed Young Rabbits Lb. <b>32¢</b>	<b>Peas</b> Brimful Fancy, No. 3 stove, 303 cans 2 for <b>23¢</b>
	<b>Tomatoes</b> Solid Pack Gallon can <b>53¢</b>

Meat Specials — Saturday Only

For Everyday Savings Shop  
**Whitaker's Groceteria — Consistently the Lowest**  
1205 Klamath Ave. (Free City Delivery on Orders of \$2.00 or Over) Phone 4803

HERE'S ONE WAY TO PLEASE YOUR MONEY  
BUY FOOD HERE AND SAVE SOME MONEY

We have the food values of the week — grocery and household specials that you can't afford to miss.  
Specials for Friday, Saturday and Monday

### EMIL'S QUALITY MEATS

Swift's Prem. Bacon By the Piece	<b>35¢</b>
Swift's Premium Hams 1/2 or Whole, 8 to 14 pound average	<b>39¢</b>
Beef Roast Tender and Juicy	<b>25¢</b>
Brookfield Cheese Amer. Brick Sliced	<b>35¢</b>
Peanut Butter Jane Good	<b>35¢</b>
Pure Lard 4 Lbs.	<b>65¢</b>
Swiss Steak Thick, Juicy	<b>39¢</b>
Spare Ribs Lb.	<b>29¢</b>
Boiling Beef Lb.	<b>18¢</b>
Bologna, Liver Sausage	<b>25¢</b>
Swift's Orle, Gov. Insp.	<b>25¢</b>
Sliced Bacon Orle	<b>39¢</b>

### PRODUCE SPECIALS—FRI. and SAT.

Sunkist Oranges Large 150's Doz.	<b>29¢</b>
Juice Size 2 Doz.	<b>49¢</b>
Arizona Grapefruit Large Size Doz.	<b>39¢</b>
Sunkist Lemons Doz.	<b>23¢</b>
Beautiful Daffodils 2 Doz.	<b>23¢</b>
Artichokes Good Size Each	<b>5¢</b>
Asparagus Small, 2 lbs. 29¢; large, 2 lbs.	<b>39¢</b>
LETTUCE, solid heads 2 for	<b>15¢</b>
POTATOES, U. S. No. 2s, Kl. 25 lbs.	<b>59¢</b>
APPLES, Newt. C Grade	Box <b>\$1.39</b>

Salmon Merrimac Columbia River, No. 1/2 Can	<b>29¢</b>
Pink Salmon Happyvale Tall Can	<b>21¢</b>
Tuna Fish Del Monte No. 1/2 Can	<b>29¢</b>
Spaghetti Franco-American 3 Tall Cans	<b>29¢</b>
Spaghetti with Cheese and Tomato Sauce Can	<b>10¢</b>
Catsup Crosse & Blackwell 2 Large Bottles	<b>35¢</b>
Beans Lane County No. 2 Can	<b>10¢</b>
Beans Diamond A Fancy Cut No. 2 Can	<b>25¢</b>
Spinach Diamond A Fancy No. 2 1/2 Can	<b>29¢</b>
Peas Royal Club, Dainty Dimple, No. 2 Can	<b>29¢</b>
Peas Meco Brand, No. 303 Can	<b>29¢</b>
Prunes Del Monte, Med. Size 2 Pound Package	<b>20¢</b>
Ser-Ry Swedish Style 13-oz. Pkg.	<b>25¢</b>
Kraut Diamond A, No. 2 1/2 Can	<b>11¢</b>
Pears Parkdale, No. 2 1/2 Can	<b>22¢</b>
Figs Meco Brand, In Heavy Syrup, Tall Can	<b>10¢</b>
Peaches No. 2 1/2 Can	<b>22¢</b>
Cheese Kraft American 50 lb. loaf	<b>35¢</b>

Tomatoes Silverdale Brand No. 2 1/2 Can	<b>45¢</b>
Tomatoes Del Monte Solid Pack No. 2 1/2 Can	<b>37¢</b>
Corn No. 1 Tall Can	<b>3 for 33¢</b>
Corn Cream Style No. 303 Can	<b>2 for 25¢</b>
Corn Tender Sweet Choice Quality, No. 303 Can	<b>3 for 29¢</b>
Peas & Carrots Meco Brand, No. 303 Can	<b>3 for 29¢</b>
Beans Green Lima, Meco Brand No. 2 Can	<b>2 for 29¢</b>
Fruit Salad No. 1 Tall Can	<b>2 for 35¢</b>
Fruit Cocktail No. 1 Tall Can	<b>2 for 25¢</b>
Peaches Westward Brand No. 2 1/2 Can	<b>2 for 39¢</b>
Grapefruit Garden Brand No. 2 Can	<b>2 for 25¢</b>
Fruit Cocktail Sacramento Brand, Tall Can	<b>2 for 23¢</b>

DEL MONTE Seedless Raisins 15-oz. Pkg.	<b>9¢</b>
FORMAY SHORTENING 3 Lb. 69¢	
IVORY SOAP—Med. bar	<b>3 for 19¢</b>
Large bar	<b>2 for 19¢</b>
OXYDOL—Large pkg.	<b>23¢</b>
Giant pkg.	<b>63¢</b>
Ivory Snow, lge. pkg.	<b>23¢</b>
Ivory Flakes, lge. pkg.	<b>23¢</b>
Lux Toilet Soap, 3 bars	<b>19¢</b>
Guest Ivory, 3 bars	<b>14¢</b>

# Emil's

SUPER MARKET 8th and Pine Ph. 3167 | STORE NO. 2 1338 Ore. Ph. 4714 | STORE NO. 3 2200 So. 8th Ph. 6878