

Blackout Signal

One 5-minute blast on sirens and whistles is the signal for a blackout in Klamath Falls. Another long blast, during a blackout, is a signal for all-clear. In precautionary periods, watch your street lights.

PRICE FIVE CENTS

KLAMATH FALLS, OREGON, MONDAY, JANUARY 5, 1942

Number 9476

Klamath's Quota \$10,000.00
Received to Date \$4,753.58
Needed \$5,246.42



CHINESE MAY AID MALAY DRIVE

Nippon Attack Repulsed

In The Day's News

By FRANK JENKINS

MacARTHUR'S tough little American-Filipino army, fighting a delaying action to give more time for organizing the defense of Singapore, stops the Japs northwest of Manila, killing 700 of them.

Corregidor beats off its fourth successive air attack, shooting down (with anti-aircraft fire alone) four out of the 52 Jap bombers engaged.

That is nearly 8 per cent of the flight. Many a duck hunter has done worse.

TIME means everything in the world to the Japs, who are putting all they have into a supreme effort for a quick knock-out in the South Pacific.

Every day of delay hurts them.

BRITISH sources in London today report that veteran Chinese troops are believed to be on their way to Malaya to help block the Japanese drive on Singapore.

Reports from British Burma relate that LARGE allied forces are concentrating there, with intensive allied air activity in which the Japs are coming off decidedly second best.

GET out here your well-thumbed map. Take a look at Burma.

As an amateur strategist (which we now ALL are) you will note at once that Burma, reached from China by the Burma road, is a threat on the flank and in the rear of the Japs in Thailand and French Indo-China.

IT is to gain time for counter-movements such as this that MacArthur and his Americans and Filipinos are fighting their battle against seemingly hopeless odds in Luzon.

ON the other side of the fence today, the Japs are reported to be drifting down the west coast of Malaya, having effected a landing with considerable forces at the mouth of the Perak river, considerably nearer to Singapore.

For the landing, they are said to have used small boats picked up along the Burma and Thailand coasts and their numerous islands.

BACK, for the moment, to our own side of the fence:

Chungking reports that Japan's third major attempt to capture Changsha has dissolved into a CATASTROPHE DEBACLE with the Japs in disarray.

KLAMATH BOND SALES CLIMB OVER MILLION

County Given Praise For Strong Effort In Defense Job

Klamath county defense bonds sales passed the \$1,000,000 mark Monday.

Andrew M. Collier, county defense savings chairman, made the announcement, which was hailed by state defense savings officials as an outstanding record among Oregon counties.

Praise Received Palmer Hoyt, state defense savings chairman, sent a message from Portland congratulating Klamath county on the showing it has made and praising the thrift and patriotism of the citizenry here. He also lauded the work of the defense savings committee and its workers.

Collier stated that the \$1,000,000 mark has actually been exceeded by sales of bonds already made this week.

Indiana Help The total figure for the county includes \$228,000 in bonds bought individually by Klamath Indians, but does not include \$150,000 tribal funds or more which the Indians want to spend for bonds as soon as authority is obtained in Washington.

"That will give us a good start toward our second million when it comes," said Collier.

Average Near \$25 On the basis of 40,497 residents of Klamath county, the \$1,000,000 bond sales show an average of nearly \$25 for every man, woman and child in the county.

Defense savings headquarters in Portland said that no comparisons with other counties are available, but that the report (Continued on Page Two)

Board Recommends Against Deporting Harry Bridges

WASHINGTON, Jan. 5 (AP)—The board of immigration appeals recommended today cancellation of deportation proceedings against Harry Bridges, west coast labor leader.

The decision was reached unanimously by the four board members who heard the case.

It reversed the recommendation of Judge Charles B. Sears, who heard testimony for three months at San Francisco early last year.

The final decision rests with Attorney General Francis Biddle. The board found that Bridges, since coming to the United States, was not a member of nor affiliated with the communist party.

Registration for Draft Scheduled On February 16

WASHINGTON, Jan. 5 (AP)—President Roosevelt today set February 16 for registration of all male citizens and most aliens of the nation between the ages of 20 and 44 who have not registered previously.

Men in this age group will be subject to military service.

The date was fixed in a proclamation. It made no mention of registration of men from 45 through 64, who are to be registered later on but who will be exempt from service with the armed forces under present legislation.

In his proclamation, the chief executive noted that this and other registrations under the selective service act "will be required to insure victory, final and complete, over the enemies of the United States."

The registration will apply to all male citizens and some non-citizens born on or after February 17, 1897, and on or before December 31, 1921. It is to take place, not only in the United States, but also in Alaska, Hawaii and Puerto Rico, between the hours of 7 a. m., and 9 p. m.

Klamath county selective service boards have finished reclassifying 73 former 4-A registrants, Director Ted Case said Monday.

The class, composed of men who have a record of past service with the armed forces, has been cancelled by the war emergency.

Both boards are now reclassifying approximately 900 1-H registrants, all of whom are over (Continued on Page Two)

PLANS LAID FOR TIRE SALES HERE

Applications Will Be Received; Drury Heads Group

The Klamath county tire rationing committee met Monday for organization, naming Don Drury as chairman, with Percy Murray and Mrs. Effie Garcelon as the other members. Earl Reynolds will act as clerk.

It was decided to hold a meeting at 2 p. m. January 7 at the chamber of commerce of all tire dealers in Klamath county.

In the meantime, applications will be received from tire dealers wishing to act as inspectors. A representative group of dealers will be chosen for the inspector jobs by the committee.

It was also stated that any persons who come under the eligibility classifications as set up by the OPM may call at the chamber of commerce and get blanks to be filled out.

MACARTHUR LEADS FORCE OUT OF TRAP

Jap Losses Heavy in Pincer Try; More Planes Downed

BULLETIN

WASHINGTON, Jan. 5 (AP)—The war department announced tonight American army bombers scored direct hits on a Japanese battleship and sank an enemy destroyer off Davao on the island of Mindanao in the Philippines.

WASHINGTON, Jan. 5 (AP)—The war department announced today that General Douglas MacArthur's Philippine army repulsed a Japanese attack with heavy enemy losses, estimating that at least 700 of the enemy were killed.

American-Filipino losses were described in a communique as relatively small.

The war department said "this was one of the most serious reverses suffered by the Japanese invaders since the war began."

The Japanese attack took place northwest of Manila.

At the same time the garrison of Corregidor fortress shot down four more Japanese bombers in beating off the third successive air attack on the fortress.

This raised officially reported enemy plane losses over Corregidor to 15.

The communique said four additional Japanese planes were hit but their destruction was not confirmed.

Fifty-two bombers took part in the attack, which continued three hours.

Escaped Trap Both the land battle on Luzon island and the latest air raid on Corregidor took place Sunday.

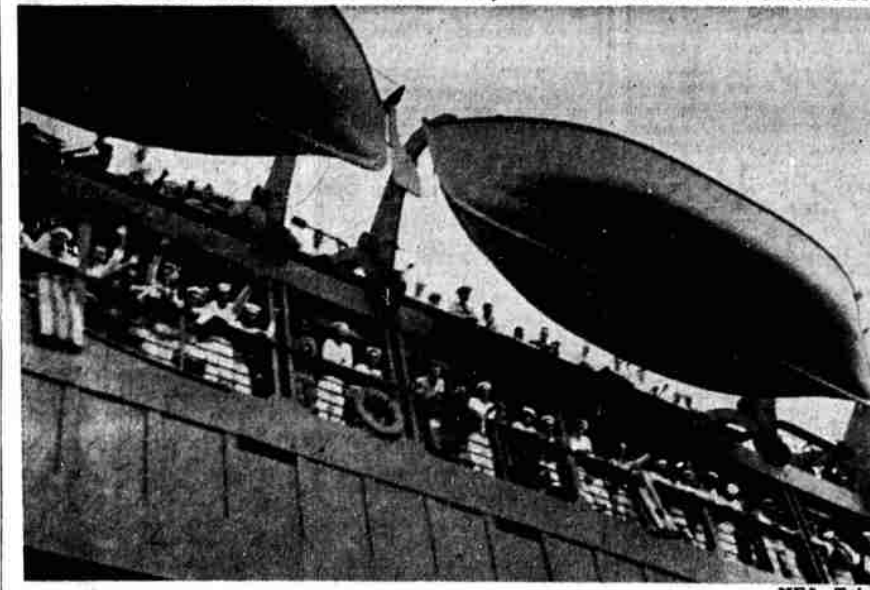
General MacArthur reported that his forces crushed the attack, presumably in Pampanga province northwest of Manila, in escaping an attempted enemy trap.

The Japanese, MacArthur said, undertook to crush the greatly outnumbered defenders between two invading forces operating as a pincer from north and south. But he added that when the trap was closed "American and Philippine troops were not in the jaws."

The communique said that Japanese strategy thus failed in this instance, necessitating the frontal attack which likewise failed.

The attack on Corregidor, like the onslaught of the previous day in which four enemy planes were shot down, failed to inflict material damage and casualties were said to be slight.

Here's the First AEF of This War; U. S. Forces Arrive Overseas



United States sailors line the deck rails and prepare to land the first American expeditionary force of World War II. After this and other troop transports of a heavily guarded convoy arrived safely "somewhere in the Pacific theater" from an American port. Photo by Acme Staff Photographer Jonathan Rice. Passed by U. S. censor.

Hitler Faces Loss of Finn Aid, New Unrest at Home

By The Associated Press With his armies beaten back 100 miles or more on parts of the Russian front, his people giving up warm clothing and even skis for the troops and high military counselors in discord or forced retirement, Adolf Hitler

Auto Industry Geared to Big Defense Drive

WASHINGTON, Jan. 5 (AP)—William S. Knudsen called on the automotive industry today to make deliveries this year of five to six billion dollars worth of weapons and war goods.

The director-general of the office of production management told reporters during a recess in a meeting of 200 top-ranking automobile makers with labor leaders and government officials.

"Everybody expressed willingness to cooperate in a program for converting virtually the entire industry to war output."

WASHINGTON, Jan. 5 (AP)—The office of production management announced today creation of a ten-member labor-management committee to draft plans for conversion of the entire automobile industry into war production.

The five management members are Edsel Ford, Detroit, president of the Ford Motor company; C. C. Calton, Lansing, Mich., president of the Motor Wheel corporation; Paul G. Hoffman, president of the Studebaker corporation, South Bend, Ind.; R. F. Black, president of White Motor company, Cleveland, and C. E. Wilson, president of General Motors.

The labor members are Walter P. Reuther, director of the General Motors division of CIO United Automobile Workers; George F. Addes, secretary-treasurer of UAW-CIO; Richard T. Frankenstein, director of the CIO-UAW aviation division; Richard Reisinger, international board member, UAW-CIO, and Earl Melton, international representative of the AFL International Association of Machinists.

Ground to Be Broken for New Safeway Store

Ground will be broken this week at the Safeway property on the southeast corner of High and Eighth street for the construction of a \$28,000 grocery building. The permit was issued early Monday to Angelo Doveri, contractor, by Building Inspector Harold Franey.

The old poplar trees, which line the parking along the property, were being cut down to make way for the one-story building which should be completed by early spring. The building will be 59 by 130 feet, according to the specifications set forth in the permit book. Howard R. Perrin was the architect.

ALLIED FORCES GATHERING IN BURMA REGION

Offensive Action in Prospect Under Wavell, Hint

By The Associated Press A Chinese expeditionary force, drawn from a reservoir of manpower that has been fighting a give and take war with the Japanese for four and one-half years, may be on its way today to the British Malayan front to help save Singapore.

British sources in London expressed belief veterans of Generalissimo Chiang Kai-shek's army were being transferred to bolster the Malayan line until Britain and the United States could put reinforcements there.

Forces Gathering It was noteworthy that the British censorship at Rangoon and London yesterday passed a dispatch saying that the gathering of allied forces in Burma suggested that the united nations command was mounting an offensive there.

The Japanese could be struck as easily overland from Burma as from their flank and rear, as they could be by reinforcement of the front against them on the Malayan peninsula.

Unspecified numbers of Chinese troops are known to have massed in Burma. Their primary function, however, then appeared to be guarding the Burma road, Generalissimo Chiang's lifeline.

Now some sharp offensive action by the new supreme commander for the united nations in the Pacific war zone, General Sir Archibald P. Wavell, seems to be in prospect.

Superior Numbers Military observers said that the retreats in Malaya had been forced not by more efficient Japanese fighting but by superior numbers of the invaders. The British imperial forces are perforce spread too thin and the front is too broad.

The balance might be restored, it was said, with Chinese infantry supported by British artillery and mechanized forces.

A Singapore dispatch said that confidence was mounting in the long-range possibilities of defending Singapore, even though about 200 miles of the Malaya (Continued on Page Two)

CHINESE CRUSH JAP DRIVE AT CHANGSHA

52,000 Troops Caught In Trap as Aid Joins Fray

CHUNGKING, Jan. 5 (AP)—Firecrackers were discharged and gongs sounded triumphantly in the streets of Chungking today to celebrate what the Chinese proclaimed a great victory over the Japanese at Changsha.

The Chinese declared that a junction had been effected by the Chinese Changsha garrison and the troops sent to its relief, and that a Chinese cordon had been drawn about the Japanese force which had suffered 52,000 casualties in three days in a "catastrophic debacle."

The Japanese, dependent upon air-borne supplies, are continuing attempts to break out of the trap, Chinese said.

A group of newspaper correspondents and foreign embassy attaches, including Lieut. Col. David D. Barrett, assistant U. S. military attaché, left for the Hunan front to view the scene of the Changsha battle.

"Meanest Thief" Takes Red Cross Money at Church

The new year already has a candidate for "meanest thief." He is the unknown robber who broke into the First Christian church, Ninth and Pine streets, some time over Saturday night and stole \$3 belonging to the Red Cross.

The money was in an envelope plainly marked "Red Cross" and its purpose could not have been misunderstood by the thief, Rev. Arthur Charles Bates said.

When the minister related the incident to his congregation Sunday morning, two members of the audience immediately contributed the money to make up the robbery loss for the Red Cross.

Contributions Received by Red Cross in War Relief Campaign

Contributions previously acknowledged \$4702.08
Contributions received Monday 51.50
Total \$4753.58

Klamath county's voluntary contributions to the Red Cross war relief fund hit a new low Monday, with a total of only \$51.50 recorded. This leaves over half of the \$10,000 quota yet to be made up.

The drive, which opened here December 12, is aimed at a \$50,000 national Red Cross fund for the relief of stricken populations in war areas, and for aid to the armed forces.

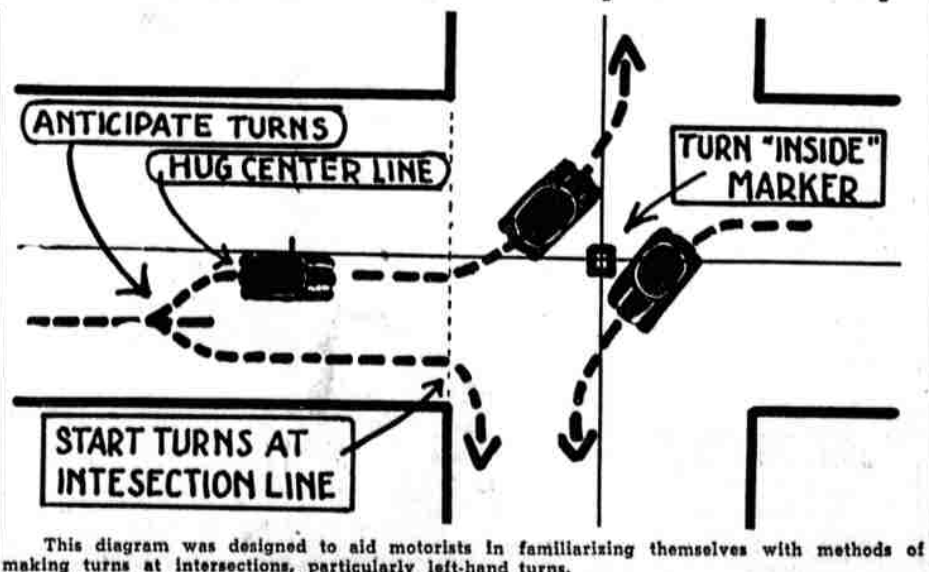
- Mrs. F. M. Cary \$ 10.00
- (This amount contributed in place of purchasing flowers for officers of the W. M. Prosperity chapter No. 160, OES of Merrill.)
- Ivan Buell, Merrill 20.00
- J. R. Blatch, Merrill 5.00
- Holy Cross Altar society, Merrill 5.00
- Mr. and Mrs. Della Losey, Merrill 2.50
- Merrill Rebekah lodge, No. 151 1.00
- Walt Fotheringham, Merrill 1.00
- Mabel Baldwin, Merrill 1.00
- Mrs. John Giacomini, Merrill 1.00
- Hans B. Norland 3.00
- Mrs. B. E. Wolford, Sprague River 1.00

"Turn Inside Center Button," Police Department Says

Wide Turns Delay Traffic Through Business Section

City police on Monday appealed to motorists here to familiarize themselves with the proper method of making left turns at local intersections. Several arrests have been made for improper left turns, and indications are that many people are confused by the presence of center "cube signs" at the intersections under the new system of traffic control underway here.

The police department statement follows: The cube signs in the center of the intersections are there for one purpose only, and that is to state where left turns can be made. The cube has no relationship as to how a left turn should be made, but it is for this (Continued on Page Two)



This diagram was designed to aid motorists in familiarizing themselves with methods of making turns at intersections, particularly left-hand turns.

News Index

- City Briefs Page 3
- Comics and Story Page 6
- Editorials Page 4
- Information Page 3
- Market, Financial Page 7
- Pattern Page 4
- Sports Page 5