

Snow Gets Invited to Adorn Christmas Dinner



Make a crepe paper snow girl and sled for your Christmas table. Here's a merry miss we had designed for your Christmas table. She's a love of a snow girl.

SNOW GIRL AND SLEIGH
Head: Crush two sheets white tissue into ball 3 inches in diameter. Wrap smoothly with 1/4 inch strip of white crepe paper cut across grain.

Legs and body: Cut two heavy No. 15 wires each 12 inches long for each leg. Wrap two wires together with narrow strip of paper leaving 2 inches unwrapped at one end. Separate unwrapped wires and fasten with gummed paper tape to top of a cardboard oval 2 inches long and 1 inch wide. Pad leg and instep with tissue and wrap smoothly with strip of white crepe paper. Continue wrapping and padding until legs are nice and chubby.

Wind medium weight No. 10 wire around center of head leaving the ends extending below the ball to start the neck. Then place two leg wires on either side of medium wire and tie all together with spool wire. Wrap body from neck to hips with white crepe paper, padding with tissue as you wrap.

Arms: Cut one heavy No. 15 wire 12 inches long. Pad with tissue and wrap with white crepe paper. Place arms at right angles to doll's body and tie together with spool wire. Wrap all together with criss-cross wrapping. Then brush paste over figure and cover with white crepe paper which has been stretched and crushed.

Dress: For skirt cut a strip of bright green crepe paper across the grain 5 inches wide and 15 inches long. Fold strip in half lengthwise and shirr folded edge over knitting needle. Slip onto a piece of spool wire long enough to go around doll's body. Twist ends of wire together to hold in place. Repeat for neck ruff, cutting paper 3 inches wide.

Hat: Cut brim to fit head out of light-weight cardboard. For the crown make a tube of double thickness of white crepe paper. Paste folded edge to hat brim.

Wake Marines, Chicago Cop Settle Strike
CHICAGO, Dec. 19 (AP)—The marines on Wake Island and a policeman on picket detail settled a 2-month-old defense plant strike in Chicago.

Lieutenant Leroy Steffens had spent eight weeks observing a strike of 30 machinists demanding recognition of an AFL union as bargaining agency when the story of Pearl harbor and Wake Island came along.

"If the lads on Wake Island can fight like they did," he told the pickets, "you guys certainly can settle your little differences and do your part."

They named Steffens mediator. He cleared the path to settlement and by next week the company again should be at peak production on military equipment.

Newberg Woman Loses Son in War
NEWBERG, Ore., Dec. 19 (AP)—"If I had ten sons I would willingly send them all into the service of their country," Mrs. Fred Bryant said today.

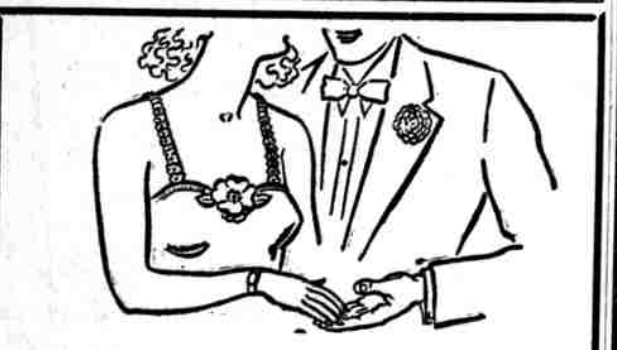
She had five sons, all in military service. Yesterday she was told that her youngest, Harvey Rushford, 18, had been killed December 7.

FOR RENT TRUCKS and BICYCLES
You Drive — Move Yourself
Save 1/2—Long and Short Trips.
STILES' BEACON SERVICE
Phone 8304 1201 East Main

AN IDEAL GIFT THEATRE SCRIP
SAVE 20% THEATRE SCRIP BOOKS
The Pelican, Pine Tree, Vox and Rainbow Theatres

Gather open edges at top together with needle and thread. Then flatten to form top circle of crown. Decorate with ribbon bows.

SLEIGH
Cut two side sections for sleigh out of white cardboard. Join sides to strip of cardboard 5



Jack and Jill enjoy their fill Of evenings gay and dashing. Her eyes are bright, her hands are white And Par has done her washing.

PAR SOAP
—is so skillfully blended of carefully chosen ingredients that washing clothes and dishes with Par actually helps keep hands soft and white.
At Your Grocer's

AT EMIL'S!!

Santa says,
PLAN AHEAD

Puttying
Crosse & Blackwell
Plum and Fig 1 Pound Can **33c**
2 Pound Can **59c**

Oysters
For That Turkey Dressing
Ocean Brand
2 cans **25c**

TURKEYS

The choicest birds of Oregon state at Emil's Market, selected for their tender drum sticks and heavy white-meated breast—BUY YOURS NOW!

TOMS ★ HENS ★ GEESSE

27c lb. 31c lb. 25c lb.

Headquarters for
Lutefisk Pound **25c**
Oysters Fancy, Select, pint **29c**
Roasting Hens Colored, dry pickled, pound **33c**
Sausage Swift's Brookfield, pound roll **35c**
Mince Meat Brandy flavored 2 lbs. **25c**

Hams 1/4 or whole Lb. **27c** Bacon 1/4 or whole Lb. **24c**

SPECIALS ON S. 6TH
Specials for Fri., Sat., Mon., Tues., Wed.

JUICES

Libby's Tomato Juice
Tall can **25c**
3 for **75c**

Grapefruit Juice
46-oz. can **20c**

Blended Juice
Dr. Phillips, 46-oz. can **28c**
No. 2 Can **11c**

MILK Swift's Tall Can 4 For 33c	SUGAR Pure Cane 10 Lbs. 65c	NUCOA Margarine 2 Lbs. 49c	SPRY 3 Lb. Pail 66c	SNOW-DRIFT 3 Lb. Pail 65c	FORMAY 3 Lb. Pail 63c
-----------------------------------------------------	-------------------------------------------------	------------------------------------------------	--------------------------------------	--------------------------------------------	----------------------------------------

OUR POLICY is to sell foods that our customers want. Emil Says, if you can't find the brand and quality you want, ASK US—WE HAVE IT.

LIBBY'S PUMPKIN 2 1/2 Tin **12c**
Fancy Solid Packed for Tasty Pies

Large Grade A Eggs Dozen **39c**
Fresh Farm Eggs for Every Use

SEEDLESS RAISINS 4 Lb. Pkg. **29c**

POWDERED SUGAR 3 Lbs. **23c**

BROWN SUGAR Moist Pack 3 Lbs. **23c**
Sprinkle or Cook These Delicious Jersey Sweet Potatoes

CRANBERRY SAUCE 2 Cans **29c**
It's Easy to Slice in the Can—Mistkist

Coffee 1 Lb. **31c**
Hills Bros. 2 lbs. **60c**
Red Can 4 lbs. **\$1.18**

ALBER'S CORNFLAKES
1c Sale—11-oz. package for 1c with purchase of 2 regular 11-oz. packages for **19c**
Philadelphia Cheese Pkg. **10c**

MIX YOUR Holiday Spirits WITH CANADA DRY Sparkling Water
12-oz. SIZE **3 FOR 25c**
FOR THE BIG BOTTLE **15c**

Royal Gelatin
Assorted Flavors 4 packages **23c**

Best Foods Mayonnaise
PINT **32c** QUART **53c**

Crab Meat
Seaside Brand No. 1/4 Can **33c**

Wine Vinegar
Fine for Salad Quart Bottle **25c**

Best for Juice—and Every use!

Sunkist CALIFORNIA ORANGES

A special shipment of Fresh Fruits and Vegetables for our customers. Emil's says: The best for THAT Christmas dinner.

ORANGES Sunkist 178 Size Doz. **35c**

ORANGES Sunkist, Large 128 Size Doz. **45c**

ORANGES 252 Size 3 Doz. **35c**
Pleasant Pack Navels

CELERY Fancy Large Utah Stalk **15c-19c**

APPLES Fancy Wrapped and Packed, Delicious 5 Lbs. **25c**
Box **\$1.98**

APPLES Roman Beauty Fancy Wrapped and Packed 6 Lbs. **25c**
Box **\$1.98**

Cranberries 2 lbs. **35c**

SWEET POTATOES Fine for Baking 5 lbs. **19c**

GOLDEN BANANAS 2 lbs. **15c**

CANDIES

Hard Mix, 2 lbs. **27c**
Old Fashioned Chocolates, 2 lbs. **27c**
Jumbo Gum Drops, 2 lbs. **27c**
Victoria Filled, 2 lbs. **35c**

SEE OUR FULL LINE OF FANCY CHRISTMAS BOX CHOCOLATES

NUTS

Mixed Nuts, 2 lbs. **45c**
Walnuts, med., 2 lbs. **35c**
Peanuts, fresh roasted, lb. **15c**
Brazil, fancy, 2 lbs. **49c**
Shelled Walnuts, fancy halves, lb. **53c**
Filberts, lb. **23c**

OLIVES

La Mirada, large, ripe, qt. can **35c**
La Mirada Green Olives, stuffed with celery, ripe olives and pimientos, large jar **49c**
La Mirada Green Pitted Olives, lge. jar **49c**

TOBACCO

Prince Albert, 1-lb. tin **76c**
Velvet, 1-lb. tin **76c**
George Washington, 1-lb. tin **54c**
Granger, 1-lb. tin **72c**

RINSO Large Pkg. **21c**

LUX Toilet Soap Bar **6c**

LUX FLAKES Large Pkg. **22c**

LOOK AHEAD

What's Christmas? Without S&W Quality Foods on Your Table

S&W Fruit Cocktail Tall Can **35c**
2 For **70c**

S&W Salad Fruits Tall Can **19c**

S&W Peaches No. 2 1/4 Can **28c**

S&W Pineapple Favors, No. 2 1/4 Can 2 for **49c**

S&W Asparagus Green Tip, No. 2 Can **27c**

S&W Peas Medium Size No. 2 Can 2 For **33c**

S&W Peas & Carrots No. 2 Can **18c**

S&W Deloro Corn No. 2 Cream Style Can **18c**

S&W Corn No. 2 Can **17c**

S&W Shrimp Wet Pack Can **23c**

S&W Salad Veg. Tall Can **22c**

Emil's

FLOUR
DRIFTED SNOW Home Perfected 49 Pound Bag **\$2.09**
24 1/2 Pound Bag **\$1.09**
BISQUICK Large Package **29c**

FLOUR
NORTHERN BRAND HARDWHEAT 49 POUND BAG **\$1.69**
Anchor Brand 49 POUND BAG **\$1.39**

SUPER MARKET STORE NO. 2 9th and Pine - Ph. 3168
STORE NO. 3 2200 So. 6th - Ph. 6875